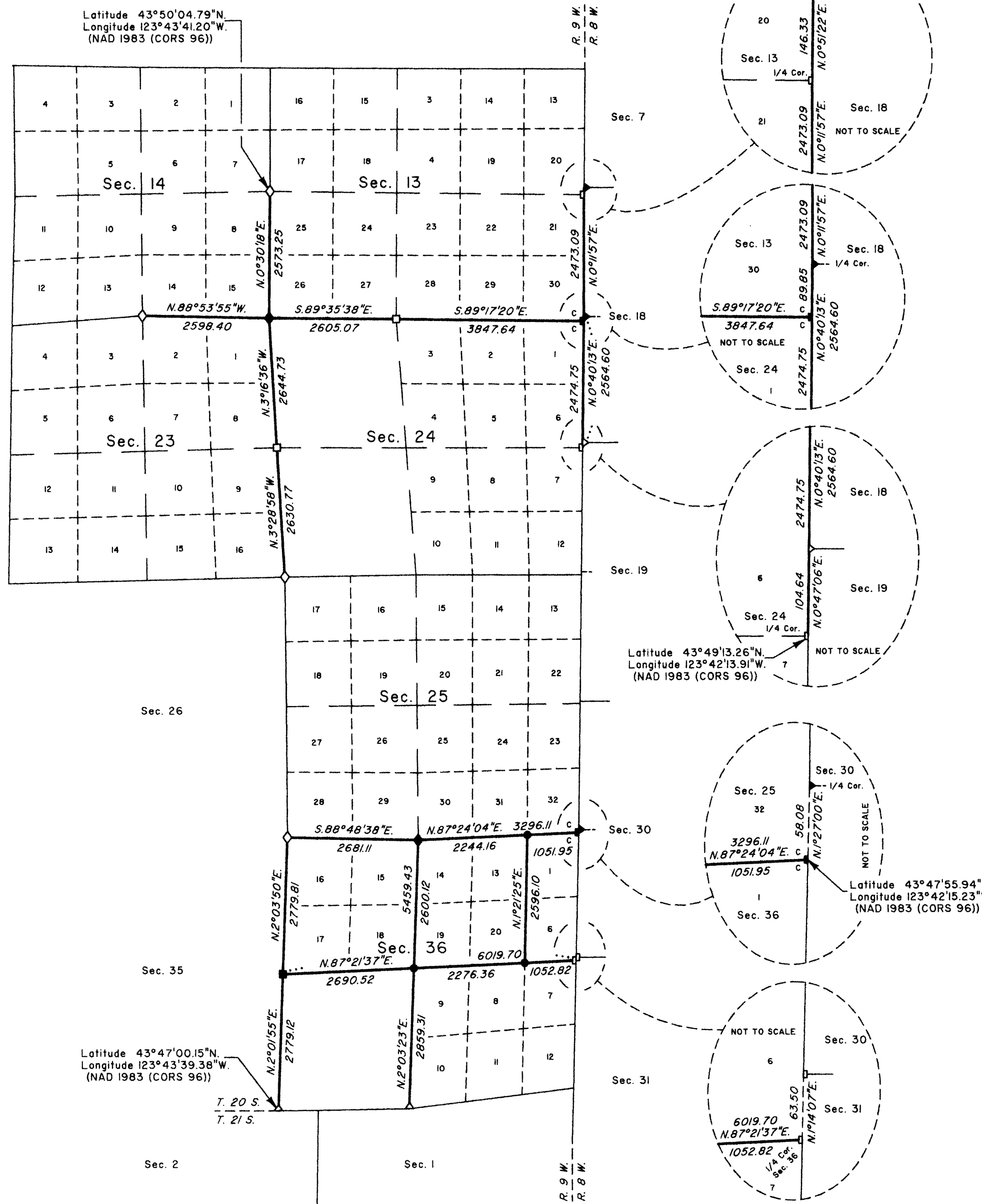


# TOWNSHIP 20 SOUTH, RANGE 9 WEST, OF THE WILLAMETTE MERIDIAN, OREGON

## DEPENDENT RESURVEY AND SUBDIVISION OF SECTION 36

FILED  
 Date: 9/17/2012 By: JC  
 This survey consists of:  
 Map: VOL. 58 PAGES  
 Narrative: 22888-22909  
 Corner Rpt:

DOUGLAS COUNTY  
 SURVEYOR



LEGAL SUBDIVISION	OFFICIAL ACRES
SECTION 36	
LOT 13	33.48
LOT 14	33.49
LOT 19	33.73
LOT 20	33.72
LOT 15	40.70
LOT 16	42.08
LOT 17	42.07
LOT 18	40.70
TOTAL AREA	299.97
FEDERAL INTEREST LAND RESURVEYED	

A history of surveys, corner descriptions, and other relevant information is contained in the field notes.

This plat represents the dependent resurvey of a portion of the west boundary, Township 20 South, Range 8 West, and dependent resurvey of a portion of the subdivisional lines, designed to restore the corners in their true original locations according to the best available evidence, and the subdivision of section 36, Township 20 South, Range 9 West, Willamette Meridian, Oregon.

Official areas based on the measurements of this survey have been returned for Federal interest land where indicated. Aliquot part legal subdivisions retain their aliquot characteristics and refer to precisely the same land as that which was previously identified by its original survey or description. A lot can only be subdivided by survey or supplemental plat. Except as indicated hereon, the lottings and areas are as shown on the plat approved May 6, 1893, and the plat accepted March 23, 1960.

Survey executed by Edith M. Forkner, Cadastral Surveyor, beginning March 21, 2011, and completed August 17, 2011, pursuant to special instructions approved March 18, 2011, for Group No. 2313, Oregon.

**LEGEND**

- ◊ Original corner previously remonumented
- ◆ Original corner remonumented this survey
- Corner previously established or reestablished
- Corner previously established or reestablished; remonumented this survey
- Corner established or reestablished this survey

UNITED STATES DEPARTMENT OF THE INTERIOR  
 BUREAU OF LAND MANAGEMENT

Portland, Oregon

This plat is strictly conformable to the approved field notes, and the survey, having been correctly executed in accordance with the requirements of law and the regulations of this Bureau, is hereby accepted.

For the Director

*Mary J. M. Hault*

Chief Cadastral Surveyor of Oregon

*July 6, 2012*  
 Date

OFFICIALLY FILED: 9/12/12