

TOWNSHIP 20 SOUTH, RANGE 9 WEST, OF THE WILLAMETTE MERIDIAN, OREGON

DEPENDENT RESURVEY AND SUBDIVISION OF SECTION 27

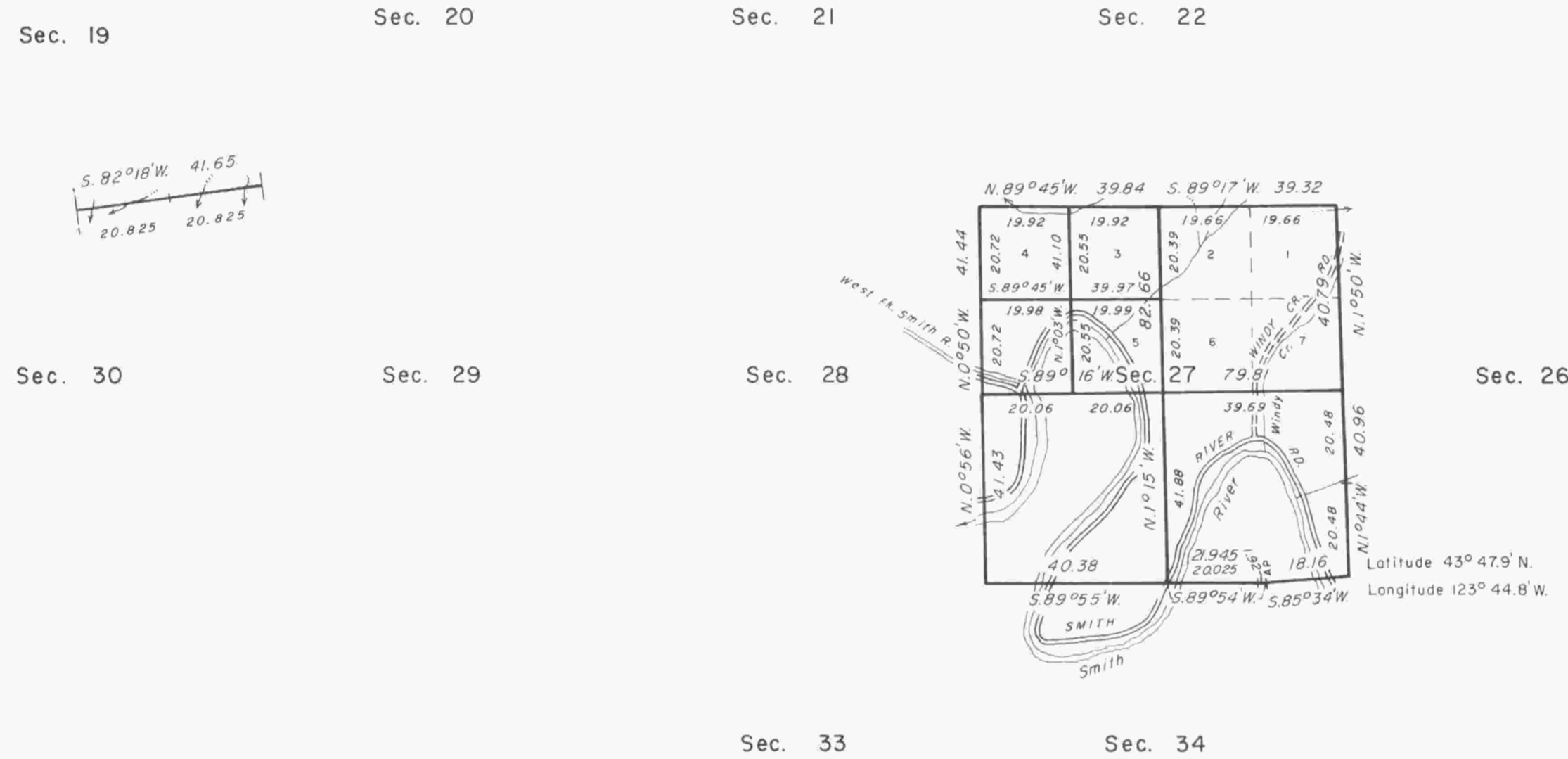
A history of surveys is contained in the field notes.

This plat represents a dependent resurvey of a portion of the subdivisional lines, T. 20 S., R. 9 W., Willamette Meridian, Oregon, and the subdivision of section 27.

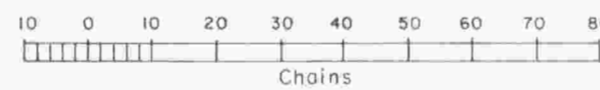
The lottings and areas are as shown on the plats approved July 3, 1878 and May 6, 1893, and accepted March 23, 1960.

The survey was executed by Harvey E. Wofford, Cadastral Surveyor, beginning April 19, 1982, and completed May 27, 1982, pursuant to Special Instructions dated February 9, 1982, for Group No. 1090, Oregon.

Timber in this area consists of fir, hemlock, cedar, alder, and maple.



21° EAST



UNITED STATES DEPARTMENT OF THE INTERIOR
BUREAU OF LAND MANAGEMENT
Portland, Oregon August 21, 1984

This plat is strictly conformable to the approved field notes, and the survey, having been correctly executed in accordance with the requirements of law and the regulations of this Bureau, is hereby accepted.

For the Director

William W. Glenn

Chief Cadastral Surveyor of Oregon