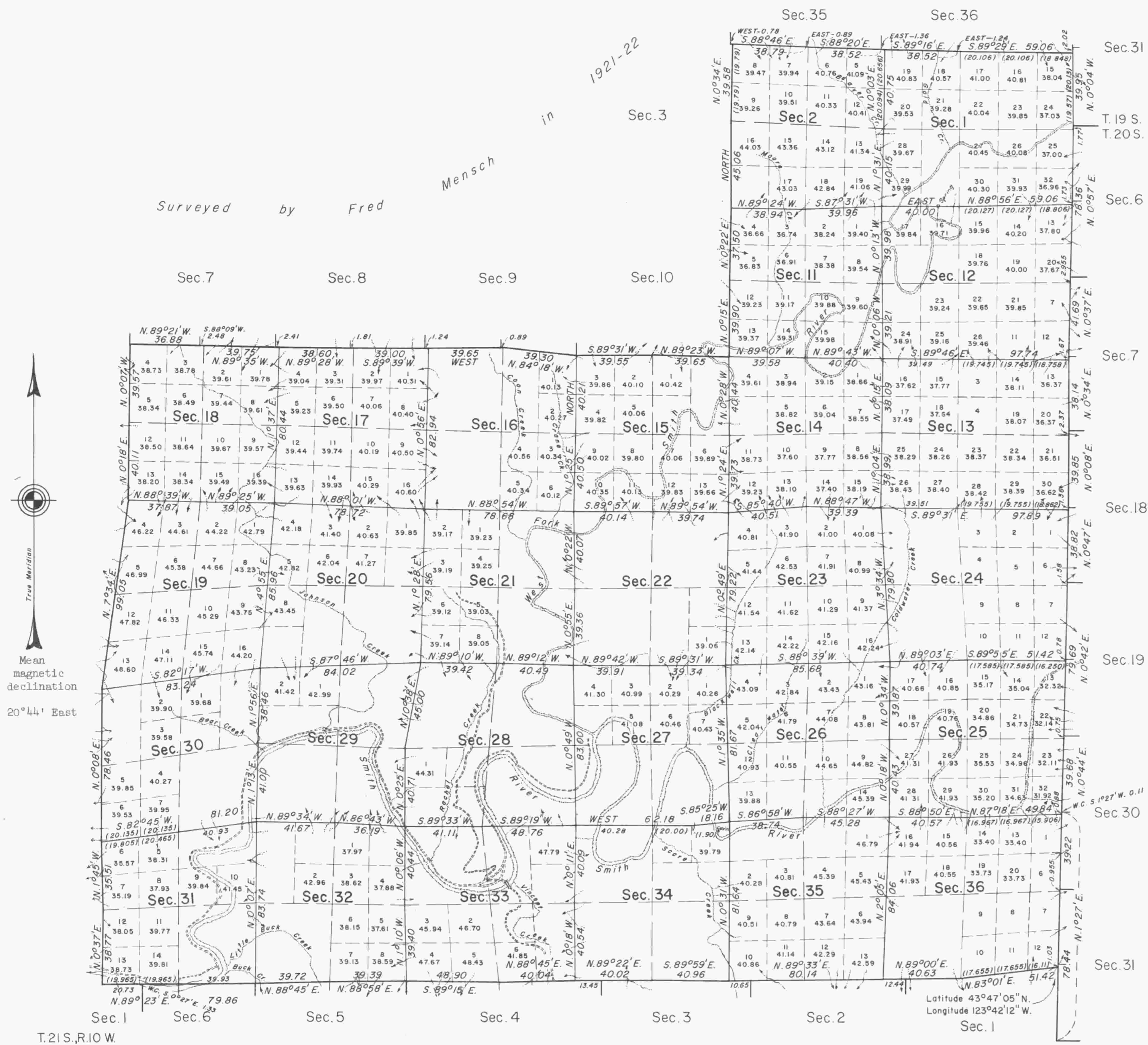


# TOWNSHIP 20 SOUTH, RANGE 9 WEST, OF THE WILLAMETTE MERIDIAN, OREGON.

## DEPENDENT RESURVEY



True Meridian

Mean magnetic declination  
20°44' East

0 10 20 30 40 50 60 70 80  
Chains

Area resurveyed: 18,893.49 acres

This plat represents a retracement and reestablishment of the south boundary, portions of the north boundary and subdivisional lines of T. 20 S., R. 9 W., Will. Mer., Oregon, and a portion of the west boundary of T. 19 S., R. 8 W., Will. Mer., Oregon, designed to restore the corners in their true original location according to the best available evidence; excepting as new or modified vacant subdivisions are shown hereon, the areas as shown on the plat approved May 6, 1883.

North boundary surveyed by William Thiel in 1891, surveyed and re-surveyed by Henry L. Chandler in 1899, and resurveyed in part by Fred Mensch in 1921.

South boundary surveyed by William Thiel in 1877 and 1891, and re-surveyed by Alonzo Gesner in 1893 and resurveyed in part by Fred Mensch in 1919.

East boundary surveyed by William P. Wright in 1883 and William Thiel in 1891, and resurveyed in part by T. A. Tillman in 1950.

West boundary surveyed by W. H. Byars in 1874, William Thiel in 1877 and 1891 and Nathaniel Martin in 1892, and resurveyed in part by Fred Mensch in 1922 and by T. A. Tillman in 1951 and 1952.

Subdivisional lines surveyed by William Thiel in 1877 and 1891, and surveyed and resurveyed in part by Fred Mensch in 1921.

Dependent resurvey of the south boundary and portions of the north and east boundaries and subdivisional lines of T. 20 S., R. 9 W., Will. Mer., Oregon, executed by Thomas A. Tillman and Joseph S. Gawron, May 14, 1954, under Special Instructions dated September 2, 1952, which provide for the surveys included under Group No. 306, Oregon.

UNITED STATES DEPARTMENT OF THE INTERIOR  
BUREAU OF LAND MANAGEMENT  
Washington, D.C. March 23, 1960

This plat is strictly conformable to the approved field notes, and the survey, having been correctly executed in accordance with the requirements of law and the regulations of this Bureau, is hereby accepted.

For the Director

*Donald O. Clement*

Cadastral Engineering Staff Officer

R.H.