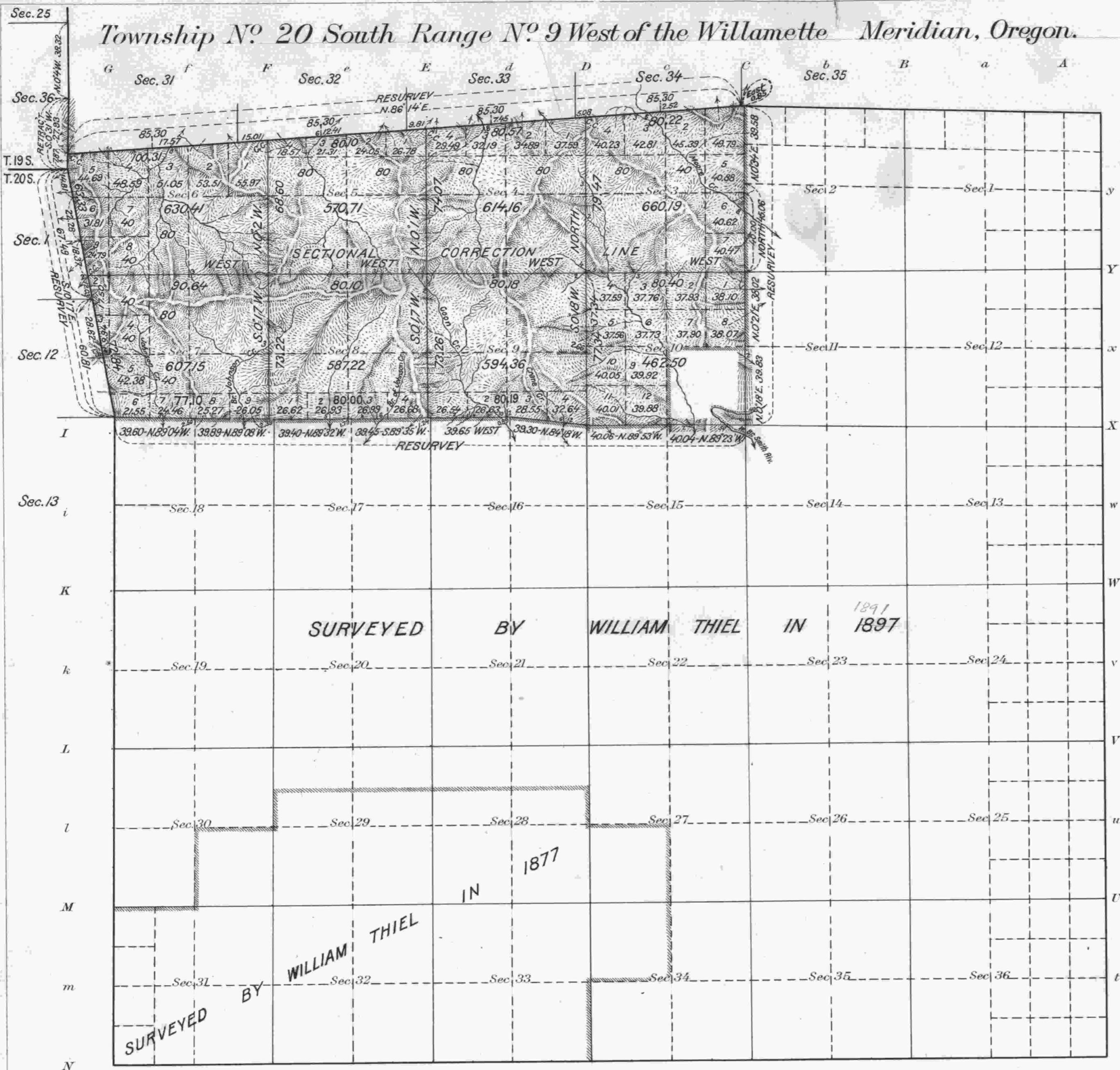


# Township No. 20 South Range No. 9 West of the Willamette Meridian, Oregon.



Areas in Acres	
Public Land	4726.70
Indian Reservation	
Indian Allotments	
Mineral Claims	
Water Surface	
<b>Total Area</b>	<b>4726.70</b>

Scale 40 Chains to an inch  
 Mean Magnetic Declination 21° 37 1/2' E.  
 Latitude 43° 50' N. Near N.W. Cor. Sec's 10, 11, 14 & 15.  
 Longitude 123° 43' W.

Surveys Designated	By Whom Surveyed	Group		Amount of Surveys			When Surveyed	
		No.	Date of Instructions	Mis.	chs.	lks.	Begun	Completed
Resur. portion N. Bdy.	Fred Mensch	56	April 8, 1920.	4	22	05	August 23, 1921.	August 31, 1921.
Resur. & Retract. Portion W. Bdy.	"	"	"	1	56	17	March 13, 1922.	March 14, 1922.
Retract. Portion W. Bdy. T. 19 S., R. 9 W.	"	"	"	"	27	33	"	" 13 "
Resur. " Subdivisions	"	"	"	5	79	88	July 12, 1921.	Aug. 30, 1921.
Sur. Subdivisions	"	"	"	9	57	28	" 19 "	Mar. 13, 1922.
Connections	"	"	"	6	1	16	"	"
N. & Portion W. Bdy.	Harvey L. Chandler.	under	Cont.	N6.	705		in	1899
W. Bdy.	Nathaniel Martine.	"	"	"	539		"	1892

The above map of Township No. 20 South Range No. 9 West of the Willamette Meridian Oregon is strictly conformable to the field notes of the survey thereof on file in this office, which have been examined and approved.

U. S. Surveyor General's Office.  
 Portland, Oregon June 30, 1922.

*Wesley W. Cairness*  
 Surveyor General of Oregon.

J.W.T.