

Date: 9/18/2017 By: JC

This survey consists of:

Map: PLAT: T20-8 2016-1

Narrative: VOL. 58 PAGES

Corner Rpt: 23443-45

DOUGLAS COUNTY SURVEYOR

SHEET 1 OF 3

TOWNSHIP 20 SOUTH, RANGE 8 WEST, OF THE WILLAMETTE MERIDIAN, OREGON

DEPENDENT RESURVEY AND SUBDIVISION OF SECTION 34

This plat constitutes the entire record of the dependent resurvey of a portion of the south boundary and subdivisional lines, designed to restore the corners in their true original locations according to the best available evidence, and the subdivision of section 34, Township 20 South, Range 8 West, Willamette Meridian, Oregon.

The history of official surveys pertaining to this survey is as follows:

In 1883-84, William P. Wright, U.S. Deputy Surveyor, surveyed the boundaries of the township and subdivisional lines, as shown on the official plat of survey approved August 4, 1884, and accepted August 19, 1884.

In 1950, Thomas A. Tillman, Cadastral Engineer, dependently resurveyed a portion of the south boundary and subdivisional lines, as shown on the official plat of survey accepted February 7, 1952.

In 1952-54, Marvin J. Lytle, Palmer Norseth, Thomas A. Tillman, Raymond M. Bicknell, Joseph S. Gawron, and Hans W. Thielsen, Cadastral Engineers, dependently resurveyed a portion of the subdivisional lines of T. 21 S., R. 8 W., as shown on the official plat of survey accepted April 14, 1960, suspended January 24, 2007.

In 1967, William W. Glenn, C. Albert White, and James E. Jelley, Cadastral Surveyors, remonumented certain original corner points as described in the official field notes approved March 3, 1977.

In 2005, Aaron M. Graham, Cadastral Surveyor, remonumented certain original corner points as described in the official field notes approved January 30, 2009.

In 2011, Edith M. Forkner and Aaron M. Graham, Cadastral Surveyors, dependently resurveyed a portion of the subdivisional lines, as shown on the official plat of survey accepted January 7, 2013.

In 2013-14, Edith M. Forkner, Cadastral Surveyor, dependently resurveyed a portion of the subdivisional lines, as shown on the official plat of survey accepted February 17, 2015.

The following local surveys filed in the Douglas County Surveyor's Office are referred to in subsequent corner descriptions and are referenced by surveyor's last name, Professional Land Surveyor (PLS) No. or official title, and year.

Date	Name and Registration Number	File Number
July, 1967	Douglas County Surveyor's Office	CS 54/67
Oct., 1967	Douglas County Surveyor's Office	CS 54/67
1984	Daniel W. Baker, PLS No. 1978	M 97/51

The directions of the lines are based on the true meridian as determined by Global Positioning Systems (GPS) techniques and direct solar observations and carried forward by sustained angulation using conventional survey techniques. All measurements along the lines were derived through the use of GPS and conventional survey techniques. Measured distances and directions have been adjusted by computer software that incorporates a least squares adjustment routine. The adjusted mean bearings and mean horizontal ground elevation distances are reported to the nearest second and 0.01 foot.

Official areas based on the measurements of this survey have been returned for Federal interest land where indicated. Aliquot part legal subdivisions retain their aliquot characteristics and refer to precisely the same land as that which was previously identified by its original survey or description. A lot can only be subdivided by survey or supplemental plat. Except as indicated hereon, the lottings and areas are as shown on the plat accepted August 4, 1884.

Preliminary to the resurvey, the lines of the official original surveys and resurveys were retraced and a search was made for all corners, lines, other calls of record, and where available, collateral evidence of local surveys and corners. Identified corners were perpetuated in their original positions. The retracement data was thoroughly verified and only the true line field data are given hereon.

A magnet in a white plastic case was deposited at the base of each stainless steel post, and each new bearing tree has a 2 1/2 inch x 1/4 inch magnetic nail (Mag Nail) driven at the base on right side center, unless otherwise noted in the corner description. An aluminum angle iron, 5 ft. long, was driven alongside all corners unless an existing guard post was otherwise noted in the corner description. Only those lines bounding Federal interest land were blazed.

The geographic positions shown hereon were determined by ties from temporary GPS control points, utilizing dual frequency, carrier phase GPS receivers, and processed using the National Geodetic Survey's Online Positioning User Service (OPUS).

The survey was executed in accordance with the specifications set forth in the Manual of Surveying Instructions (2009), and the special instructions approved February 24, 2015, for Group No. 2780, Oregon, by Edith M. Forkner, Cadastral Surveyor, beginning March 23, 2015, and completed August 5, 2015. She was assisted by Kenneth W. Saveland, Cadastral Surveyor; Jason H. Blum and Keith G. Felker, Surveying Technicians; and Zach Hackney, Volunteer.

UNITED STATES DEPARTMENT OF THE INTERIOR
BUREAU OF LAND MANAGEMENT

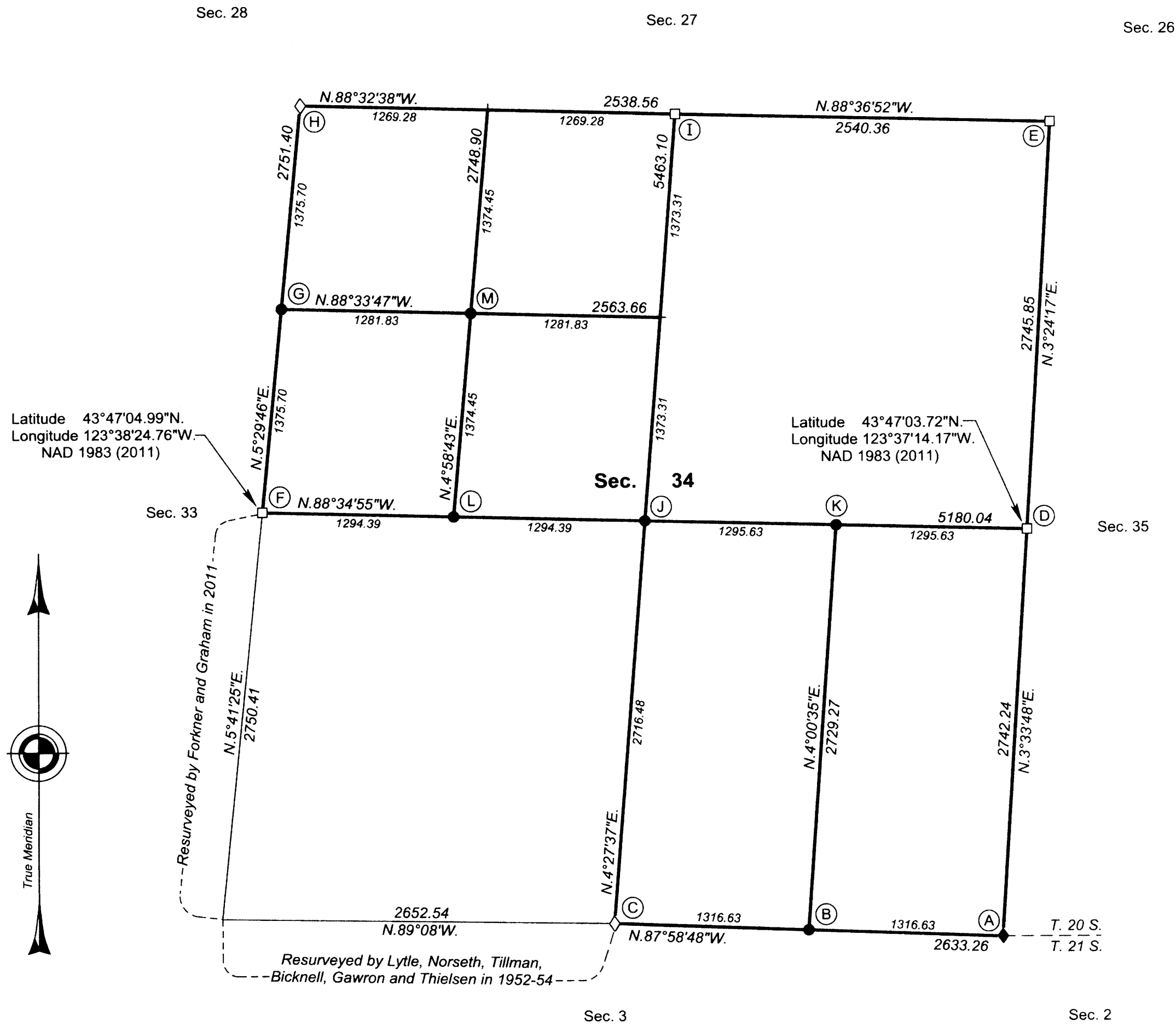
Portland, Oregon

The survey represented by this plat, having been correctly executed in accordance with the requirements of law and the regulations of this Bureau, is hereby accepted.

For the Director
Margy M. Hartzel
Chief Cadastral Surveyor of Oregon

July 6, 2016
Date

OFFICIALLY FILED: 8/29/2016

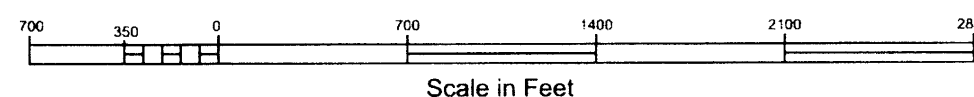


I, Edith M. Forkner, Cadastral Surveyor, HEREBY CERTIFY upon honor, that in pursuance of special instructions bearing the approval date of the 24th day of February, 2015, and the assignment instructions bearing the date of the 24th day of February, 2015, I have dependently resurveyed a portion of the south boundary and subdivisional lines, and subdivided section 34, Township 20 South, Range 8 West, Willamette Meridian, Oregon, which is represented upon this plat as having been executed by me and under my direction; and that said survey has been made in strict conformity with said special instructions, the Manual of Surveying Instructions, and in the specific manner described on this plat.

Edith Forkner
Cadastral Surveyor

6-30-16
Date

LEGAL SUBDIVISION	OFFICIAL ACRES
SECTION 34	
SW1/4 NW1/4	40.57
NE1/4 SW1/4	40.64
NW1/4 SW1/4	40.85
SW1/4 SW1/4	41.32
SE1/4 SW1/4	41.11
NW1/4 SE1/4	40.61
SW1/4 SE1/4	40.95
TOTAL AREA	286.05
FEDERAL INTEREST LAND RESURVEYED	



TOWNSHIP 20 SOUTH, RANGE 8 WEST, OF THE WILLAMETTE MERIDIAN, OREGON

DEPENDENT RESURVEY AND SUBDIVISION OF SECTION 34

(A) The cor. of secs. 2, 3, 34, and 35, on the S. bdy. of the Tp., as determined at record bearing and dist. from the remains of the original bearing tree

A burned decayed fir stump, 55 ins. diam., bears S. 35° E., 19.1 ft. dist., no marks visible.

and the witness cor. established by the Douglas County Surveyor's Office in July, 1967, reset by the Douglas County Surveyor's Office in October, 1967; monumented with an iron post, 2 ins. diam., firmly set, projecting 8 ins. above ground, bears South, 55.00 ft. dist., with a brass cap mkd. WC 55 FT T20S R8W S34 S35 S3 S2 N TO COR T21S 1950, and a steel fence post alongside. This monument now functions as a reference monument; remark the brass cap as RM T21S R8W S2 55.0 FT TO COR 2015 1950 and an arrow pointing to the cor., from which the remains of the bearing trees mkd. by the Douglas County Surveyor's Office in October, 1967

Hemlock remains, size indeterminate, bears N. 12° E., 10.5 ft. dist., no marks visible.

A decayed hemlock stump, size indeterminate, bears S. 88° E., 6.4 ft. dist., no marks visible.

A decayed hemlock stump, size indeterminate, bears N. 38° W., 6.7 ft. dist., no marks visible.

At the corner point

Drive a finned aluminum rod, 30 ins. long, 3/4 in. diam., 28 ins. in the ground, with an aluminum cap mkd.

T 20 S R 8 W
S 34 | S 35
S 3 | S 2
T 21 S
2015

from which new bearing trees

A fir, 13 ins. diam., bears N. 41 1/2° E., 70.0 ft. dist., mkd. T20S R8W S35 BT.

A fir, 16 ins. diam., bears S. 67° E., 30.7 ft. dist., mkd. T21S R8W S2 BT.

A fir, 18 ins. diam., bears S. 68° W., 50.0 ft. dist., mkd. T21S R8W S3 BT.

A fir, 23 ins. diam., bears N. 67° W., 75.4 ft. dist., mkd. T20S R8W S34 BT.

Corner is located in the loose dirt of a cut bank and 20 ft. S. of a graveled road, 10 ft. wide, bears N. 70° E. and N. 75° W.

(B) Point for the E 1/16 sec. cor. of secs. 3 and 34, on the S. bdy. of the Tp.

Set a stainless steel post, 28 ins. long, 2 1/2 ins. diam., 24 ins. in the ground, with a brass cap mkd.

S 34
E 1/16 ———
S 3
2015

from which

A fir, 12 ins. diam., bears S. 8° W., 25.5 ft. dist., mkd. E1/16 S3 BT.

A fir, 13 ins. diam., bears N. 57 1/2° W., 19.6 ft. dist., mkd. E1/16 S34 BT.

From the corner

N. 4° 00' 35" E., 455 ft. dist., Marsh Creek Ridge Road, graveled surface, 12 ft. wide, bears E. and W.

(C) The 1/4 sec. cor. of secs. 3 and 34, on the S. bdy. of the Tp., monumented with an iron post, 1 in. diam., firmly set, projecting 1 in. above ground, with a brass cap mkd.

S 34
1/4 ———
S 3
1950

from which the remains of an original bearing tree

A decayed fir stump, 24 ins. diam., bears S. 5° W., 12.5 ft. dist., to a rebar, 1/2 in. diam., driven in the center of the stump by Baker, PLS 1978, in 1984, no marks visible.

and the remains of a bearing tree mkd. by Tillman in 1950

A decayed fir stump, 24 ins. diam., bears N. 15° E., 10.6 ft. dist., to a rebar, 1/2 in. diam., driven in the center of the stump by Baker, PLS 1978, in 1984, with scribe marks S34 BT visible on open blaze.

and the bearing trees mkd. by Graham in 2005

A fir, 18 ins. diam., bears S. 21° W., 9.6 ft. dist., with a healed blaze.

A fir, 14 ins. diam., bears N. 30 1/2° W., 14.9 ft. dist., with a healed blaze.

A steel fence post is alongside the monument. There is a tag nearby that reads "This is the second cor. I was at when started my surveying career June 1950 -- W. W. Glenn".

(D) The 1/4 sec. cor. of secs. 34 and 35, monumented with an iron post, 1 in. diam., firmly set, projecting 12 ins. above ground, with a brass cap mkd.

1/4
S 34 | S 35
1950

from which the remains of the bearing trees mkd. by Tillman in 1950

A burned decayed fir stump, 30 ins. diam., bears N. 66° E., 19.1 ft. dist., no marks visible.

A burned decayed fir stump, 26 ins. diam., bears N. 46° W., 7.9 ft. dist., with a healed blaze.

and new bearing trees

A fir, 22 ins. diam., bears N. 29 1/2° E., 20.4 ft. dist., mkd. 1/4 S35 BT.

A fir, 11 ins. diam., bears N. 55 1/4° W., 14.7 ft. dist., mkd. 1/4 S34 BT and a Mag Nail driven at the base on the left side center.

A steel fence post is alongside the monument.

(E) The cor. of secs. 26, 27, 34, and 35, monumented with an aluminum rod, 3/4 in. diam., firmly set, projecting 3 ins. above a partially decayed log, with an aluminum cap mkd.

T 20 S R 8 W
S 27 | S 26
S 34 | S 35
2013

from which the remains of the bearing trees mkd. by Tillman in 1950

A burned decayed cedar stump, 47 ins. diam., bears N. 70 1/4° E., 24.4 ft. dist., no marks visible and 4 wraps of a logging cable.

A burned decayed cedar stump, 45 ins. diam., bears S. 69 1/4° W., 82.5 ft. dist., with remains of a healed blaze.

and the reference monuments set by Forkner in 2013-14

An iron rod, 5/8 in. diam., firmly set, with top flush with the surface of the ground, bears N. 84° 55' 57" E., 30.27 ft. dist., with an aluminum cap mkd. RM T20S R8W 30.3 FT S26 2013 and an arrow pointing to the cor.

An iron rod, 5/8 in. diam., firmly set, projecting 3 ins. above ground, bears N. 2° 27' 46" W, 70.22 ft. dist., with an aluminum cap mkd. RM T20S R8W 70.2 FT S27 2013 and an arrow pointing to the cor.

No suitable trees visible from corner.

An aluminum fence post is alongside the monument, which is located in bottom lands, in down woody debris and willow regrowth.

(F) The 1/4 sec. cor. of secs. 33 and 34, monumented with an iron post, 1 in. diam., firmly set, projecting 9 ins. above ground, with a brass cap mkd.

1/4
S 33 | S 34
1950

from which the remains of the bearing trees mkd. by Tillman in 1950

A decayed fir snag, 20 ins. diam., bears S. 85° E., 12.5 ft. dist., with scribe marks 1/4 and other illegible scribe marks visible on partially healed blaze.

A decayed fir snag, 12 ins. diam., bears N. 81° W., 13.2 ft. dist., with illegible scribe marks visible on falling-apart healed blaze. (Record, 13.9 ft. dist.)

and the bearing trees mkd. by Graham in 2005

A fir, 11 ins. diam., bears N. 73 1/2° E., 12.2 ft. dist., with a healed blaze. (Record, N. 71 1/2° E.)

A fir, 14 ins. diam., bears S. 34° W., 12.2 ft. dist., with a healed blaze.

A steel fence post is alongside the monument.

From the corner

N. 5° 29' 46" E., 300 ft. dist., Marsh Creek Ridge Road, graveled surface, 10 ft. wide, bears N. 40° W. and S. 35° E.

FILED
Date: 9/18/2017 By: JC
This survey consists of:
Map: PLAT: T20-8 2016-1
Narrative: VOL. 58 PAGES
Corner Rpt: 23443-45
NO SEPARATE CORNER NOTES
ALL INFORMATION ON THIS PLAT
DOUGLAS COUNTY
SURVEYOR

UNITED STATES DEPARTMENT OF THE INTERIOR
BUREAU OF LAND MANAGEMENT

Portland, Oregon

The survey represented by this plat, having been correctly executed in accordance with the requirements of law and the regulations of this Bureau, is hereby accepted.

For the Director
Mary J. M. Houtel
Chief Cadastral Surveyor of Oregon

July 6, 2016
Date

OFFICIALLY FILED:

TOWNSHIP 20 SOUTH, RANGE 8 WEST, OF THE WILLAMETTE MERIDIAN, OREGON

SHEET 3 OF 3

DEPENDENT RESURVEY AND SUBDIVISION OF SECTION 34

Ⓒ Point for the N 1/16 sec. cor. of secs. 33 and 34.

Set a stainless steel post, 28 ins. long, 2 1/2 ins. diam., 25 ins. in the ground, with a brass cap mkd.

N 1/16	
S 33	S 34
2015	

from which

A fir, 17 ins. diam., bears S. 28 1/2° E., 10.2 ft. dist., mkd. N1/16 S34 BT.

A fir, 11 ins. diam., bears N. 6° W., 8.0 ft. dist., mkd. N1/16 S33 BT.

Ⓓ The cor. of secs. 27, 28, 33, and 34, monumented with an iron post, 2 ins. diam., firmly set, with a brass cap mkd.

T 20 S	R 8 W
S 28	S 27
S 33	S 34
1950	

from which the remains of an original bearing tree

A decayed fir stump, 3 ins. diam., bears N. 16 1/2° W., 23.1 ft. dist., no marks visible.

and the remains of the bearing trees mkd. by Tillman in 1950

A decayed fir stump, 33 ins. diam., bears S. 61° E., 15.2 ft. dist., no marks visible.

A burned decayed fir stump, size indeterminate, bears N. 21° W., 45.5 ft. dist., with scribe marks T20S R8W visible on open blaze.

and the bearing trees mkd. by Graham in 2005

A fir, 23 ins. diam., bears N. 2° E., 22.1 ft. dist., with a healed blaze and a Mag Nail at the base on the right side center.

A fir, 14 ins. diam., bears S. 89 3/4° E., 41.6 ft. dist., with a healed blaze.

A fir, 11 ins. diam., bears S. 38° W., 8.6 ft. dist., with a healed blaze and a Mag Nail at the base on the right side center.

A fir, 18 ins. diam., bears N. 59 3/4° W., 15.5 ft. dist., with a healed blaze.

A steel fence post is alongside the monument.

Ⓘ The 1/4 sec. cor. of secs. 27 and 34, monumented with an iron post, 1 in. diam., firmly set, projecting 2 ins. above ground, with a brass cap, oriented W., mkd.

1/4	S 27
	S 34
	1950

from which the remains of a bearing tree mkd. by Tillman in 1950

A root hole bears S. 30 1/4° E., 52.8 ft. dist.

and the remains of the bearing trees mkd. by Glenn et al., in 1967

A burned cedar snag, 19 ins. diam., bears N. 22° E., 47.5 ft. dist., no marks visible. (Record, N. 25° E.)

A burned decayed fir snag, 21 ins. diam., bears S. 11° E., 92.4 ft. dist., no marks visible. (Record, S. 10° E.)

and the bearing trees mkd. by Graham in 2005

A fir, 11 ins. diam., bears S. 66 1/2° E., 13.7 ft. dist., with a healed blaze and a Mag Nail at the base on the right side center.

A fir, 14 ins. diam., bears N. 7 3/4° W., 15.0 ft. dist., with a healed blaze and a Mag Nail at the base on the right side center.

A steel fence post is alongside the monument.

Ⓙ Point for the center 1/4 sec. cor. of sec. 34.

Set a stainless steel post, 28 ins. long, 2 1/2 ins. diam., 23 ins. in the ground, with a brass cap mkd.

T 20 S	R 8 W
C 1/4 S	S 34
2015	

from which

A fir, 17 ins. diam., bears N. 89° E., 23.7 ft. dist., mkd. X BT.

A fir, 14 ins. diam., bears N. 18 1/2° W., 18.6 ft. dist., mkd. C1/4 S34 BT.

Ⓚ Point for the center E 1/16 sec. cor. of sec. 34.

Set a stainless steel post, 28 ins. long, 2 1/2 ins. diam., 24 ins. in the ground, with a brass cap mkd.

E 1/16	
C	S 34
	2015

from which

A fir, 11 ins. diam., bears S. 26 1/2° E., 13.2 ft. dist., mkd. CE1/16 S34 BT.

A fir, 14 ins. diam., bears N. 17 3/4° W., 8.9 ft. dist., mkd. X BT.

From the corner

N. 88° 34' 55" W., 215 ft. dist., creek, 2 ft. wide, course N. 30° E.

S. 4° 00' 35" W., 335 ft. dist., Marsh Creek, 3 ft. wide, course W.

Ⓛ Point for the center W 1/16 sec. cor. of sec. 34.

Set an iron rod, 17 ins. long, 5/8 in. diam., cemented 10 ins. in a drill hole in solid rock, with an aluminum cap mkd.

W 1/16	
C	S 34
	2015

from which

A fir, 14 ins. diam., bears N. 19° E., 28.8 ft. dist., mkd. CW1/16 S34 BT.

A fir, 16 ins. diam., bears S. 44° E., 27.4 ft. dist., mkd. X BT.

From this cor., a point established by person(s) unknown bears S. 34° 41' 03" E., 3.23 ft. dist., monumented with a rusty iron pipe, 1 3/8 ins. diam., firmly set, projecting 13 ins. above ground. This point is not utilized in this survey.

Also from the corner

N. 4° 58' 43" E., 70 ft. dist., Marsh Creek, 5 ft. wide, course West.

S. 88° 34' 55" E., 305 ft. dist., same creek, 5 ft. wide, course N. 65° W.

Ⓜ Point for the NW 1/16 sec. cor. of sec. 34.

Set a stainless steel post, 28 ins. long, 2 1/2 ins. diam., 25 ins. in the ground, with a brass cap mkd.

NW 1/16 S	S 34
2015	

from which

A fir, 17 ins. diam., bears N. 72 1/2° E., 14.7 ft. dist., mkd. X BT.

A fir, 17 ins. diam., bears S. 26 1/2° E., 13.3 ft. dist., mkd. NW1/16 S34 BT.

FILED

Date: 9/18/2017 By: JC

This survey consists of:

Map: PLAT: T20-8 2016-1

Narrative: VOL. 58 PAGES

Corner Rpt: 23443-45

DOUGLAS COUNTY SURVEYOR

OFFICIALLY FILED: 8/29/2016

UNITED STATES DEPARTMENT OF THE INTERIOR
BUREAU OF LAND MANAGEMENT

Portland, Oregon

The survey represented by this plat, having been correctly executed in accordance with the requirements of law and the regulations of this Bureau, is hereby accepted.

For the Director

Mary M. Hartzel

Chief Cadastral Surveyor of Oregon

July 6, 2016

Date