

TOWNSHIP 20 SOUTH, RANGE 8 WEST, OF THE WILLAMETTE MERIDIAN, OREGON

DEPENDENT RESURVEY

FILED
Date: 5/7/2015 By: JC
This survey consists of:
Map: 2015-1 T20-8W
Narrative:
Corner Rpt: VOL 58 PGS 23177-23191

DOUGLAS COUNTY
SURVEYOR

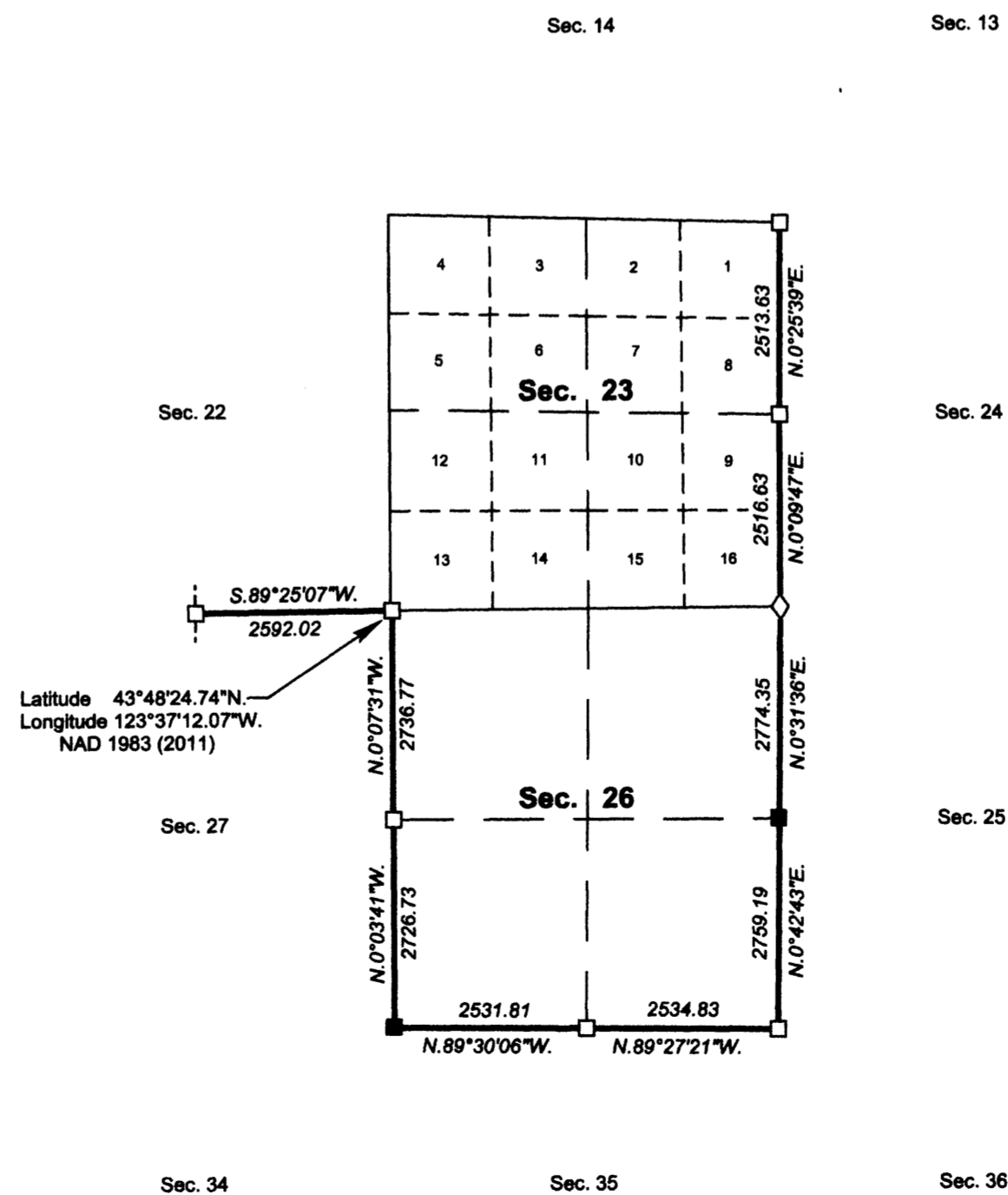
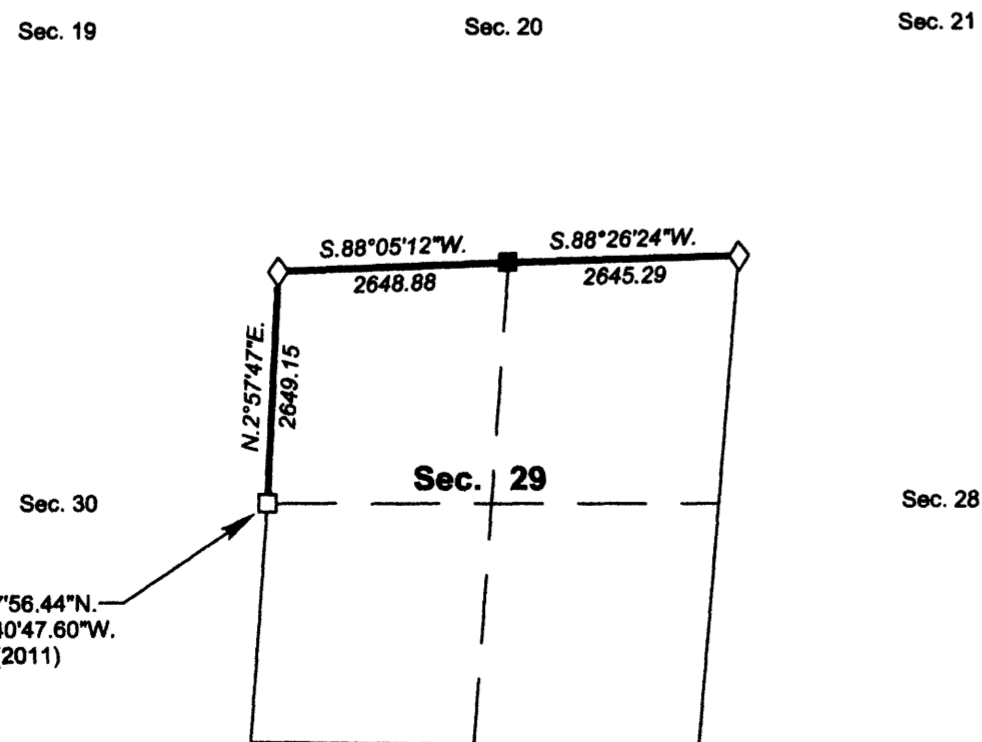
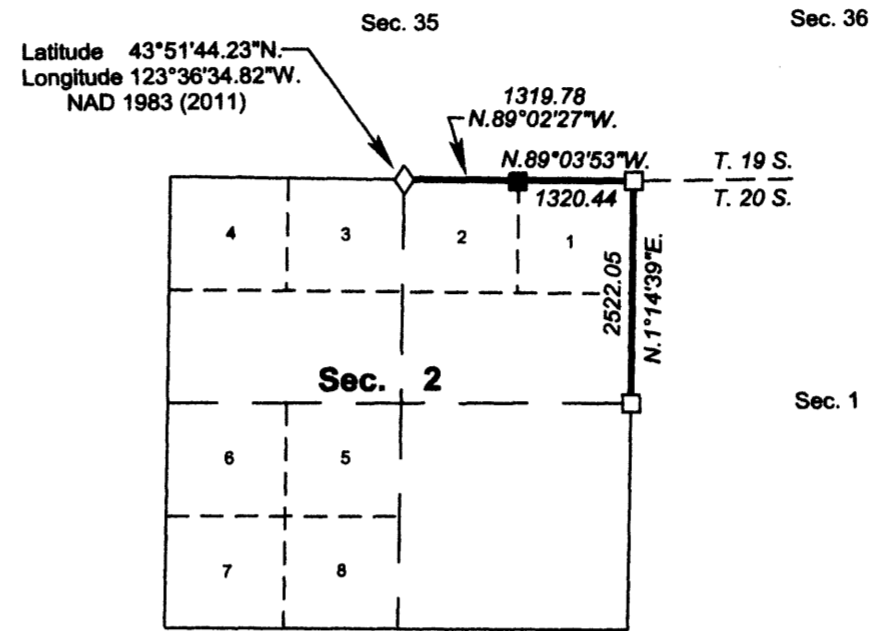
A history of surveys, corner descriptions, and other relevant information are contained in the field notes.

This plat represents the dependent resurvey of a portion of the north boundary and subdivisional lines, designed to restore the corners in their true original locations according to the best available evidence, Township 20 South, Range 8 West, Willamette Meridian, Oregon.

The lottings and areas are as shown on the plat approved August 4, 1884, and plat accepted February 3, 1960.

Survey executed by Edith M. Forkner, Cadastral Surveyor, beginning May 23, 2013, and completed August 19, 2014, pursuant to special instructions approved May 21, 2013, for Group No. 2715, Oregon.

OFFICIALLY FILED: 4/20/2015



LEGEND

- ◊ Original corner previously remonumented
- Corner previously established or reestablished
- Corner previously established or reestablished; remonumented this survey

UNITED STATES DEPARTMENT OF THE INTERIOR
BUREAU OF LAND MANAGEMENT

Portland, Oregon

This plat is strictly conformable to the approved field notes, and the survey, having been correctly executed in accordance with the requirements of law and the regulations of this Bureau, is hereby accepted.

For the Director

Mary J. M. Henthel

Chief Cadastral Surveyor of Oregon

February 17, 2015
Date

