

TOWNSHIP 20 SOUTH, RANGE 8 WEST, OF THE WILLAMETTE MERIDIAN, OREGON

DEPENDENT RESURVEY

FILED
 Date: 5/1/2014 By: JC
 This survey consists of:
 Map: T20-8W 2014-1
 Narrative: VOL. 58 PAGES
 Corner Rpt: 23038-23050

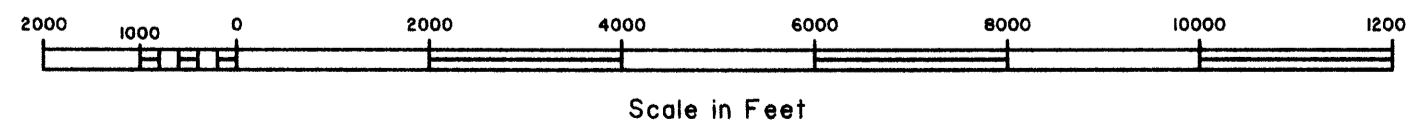
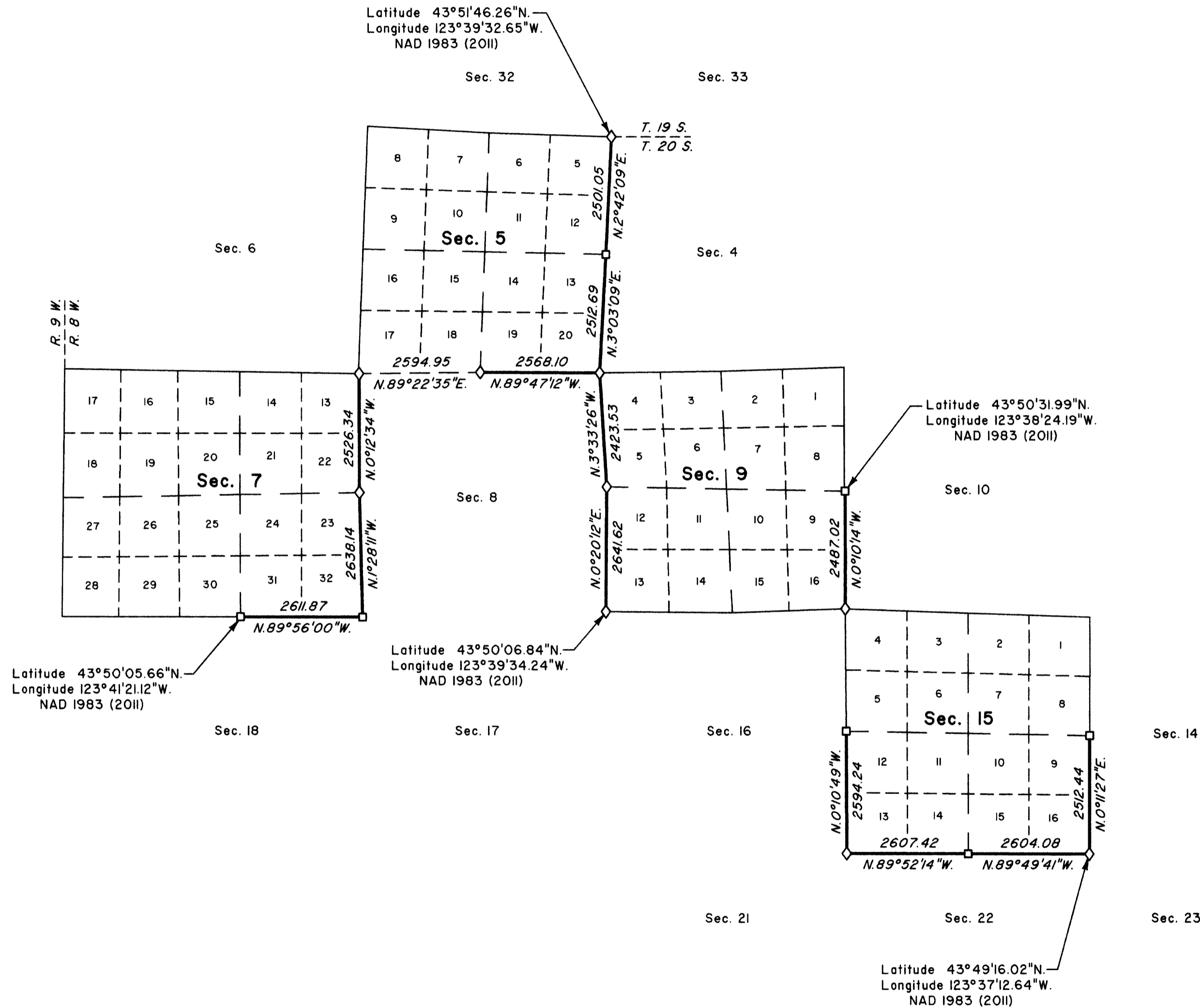
DOUGLAS COUNTY
 SURVEYOR

A history of surveys, corner descriptions, and other relevant information are contained in the field notes.

This plat represents the dependent resurvey of portions of the subdivisional lines, designed to restore the corners in their true original locations according to the best available evidence, Township 20 South, Range 8 West, Willamette Meridian, Oregon.

The lottings and areas are as shown on the plat approved August 4, 1884, and plats accepted February 7, 1952, February 3, 1960, and January 7, 2013.

Survey executed by Kenneth W. Saveland, Cadastral Surveyor, beginning May 23, 2012, and completed June 4, 2013, pursuant to special instructions approved May 17, 2012, for Group No. 2670, Oregon. He was assisted by Joseph M. Mannix, Cadastral Surveyor, and Jason H. Blum and Keith G. Folker, Surveying Technicians, and Ryan C. Porter and Joshua A. Varland, Laborers.



LEGEND
 ◊ Original corner previously remonumented
 □ Corner previously established or reestablished

UNITED STATES DEPARTMENT OF THE INTERIOR
 BUREAU OF LAND MANAGEMENT

Portland, Oregon

This plat is strictly conformable to the approved field notes, and the survey, having been correctly executed in accordance with the requirements of law and the regulations of this Bureau, is hereby accepted.

For the Director

Mary J. M. Hatch

Chief Cadastral Surveyor of Oregon

March 17, 2014

Date

OFFICIALLY FILED: 3/24/2014