

TOWNSHIP 20 SOUTH, RANGE 8 WEST, OF THE WILLAMETTE MERIDIAN, OREGON

DEPENDENT RESURVEY AND SUBDIVISION OF SECTIONS

FILED
 Date: 3/20/2013 By: JC
 This survey consists of:
 Map: NOTES: VOL. 58 PAGES
 Narrative: 22951-22972
 Corner Rpt: PLAT 2013-1 T20-8
 DOUGLAS COUNTY
 SURVEYOR

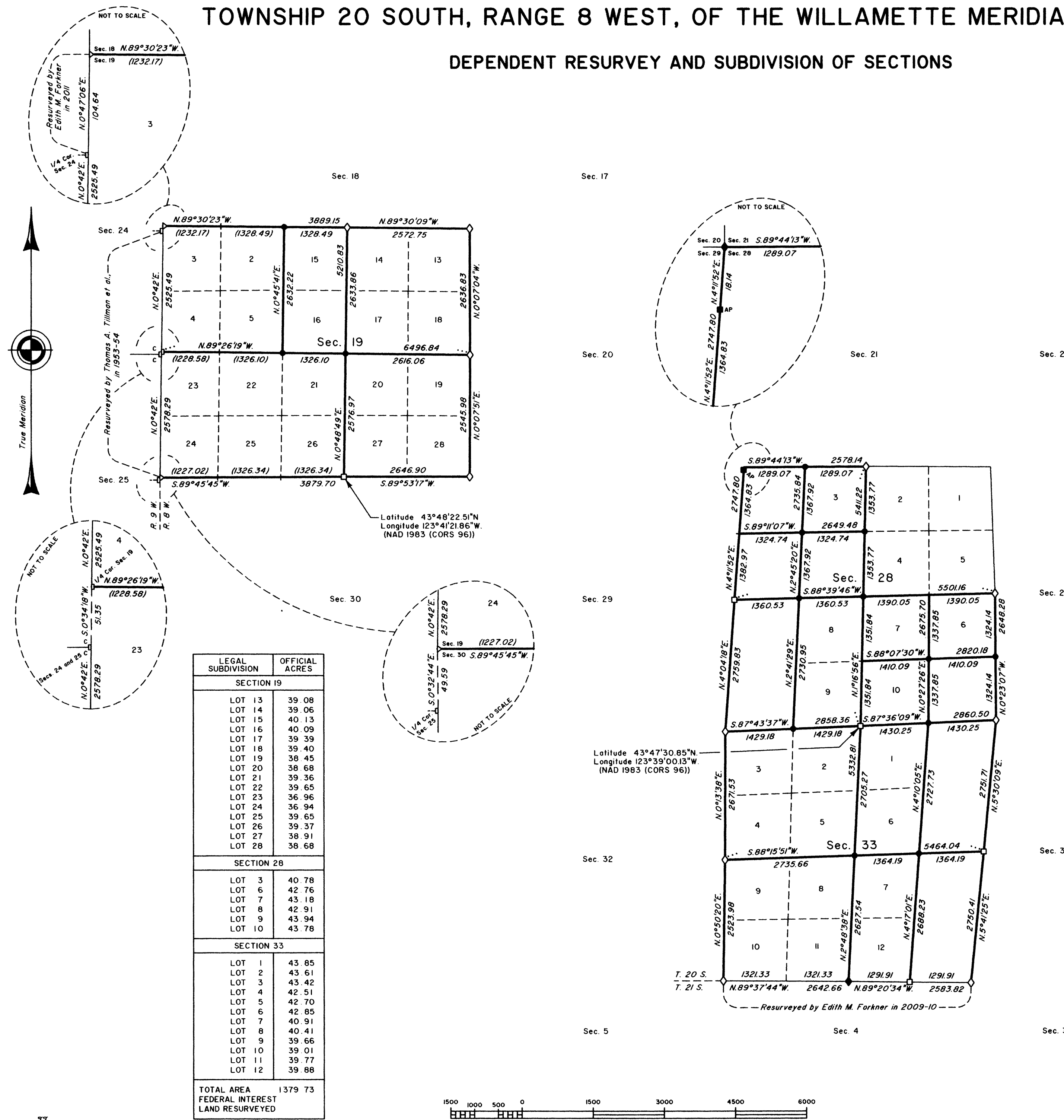
A history of surveys, corner descriptions, and other relevant information are contained in the field notes.

This plat represents the dependent resurvey of a portion of the subdivision lines, designed to restore the corners in their true original locations according to the best available evidence, and the subdivision of sections 19, 28, and 33, Township 20 South, Range 8 West, Willamette Meridian, Oregon.

Official areas based on the measurements of this survey have been returned for Federal interest land where indicated. Aliquot part legal subdivisions retain their aliquot characteristics and refer to precisely the same land as that which was previously identified by its original survey or description. A lot can only be subdivided by survey or supplemental plat. Except as indicated hereon, the lottings and areas are as shown on the plat approved August 4, 1884, and the plats accepted February 7, 1952 and February 3, 1960.

Survey executed by Edith M. Forkner and Aaron M. Graham, Cadastral Surveyors, beginning July 18, 2011, and completed October 26, 2011, pursuant to special instructions approved June 21, 2011, for Group No. 2312, Oregon.

OFFICIALLY FILED: 1/25/2013



LEGAL SUBDIVISION	OFFICIAL ACRES
SECTION 19	
LOT 13	39.08
LOT 14	39.06
LOT 15	40.13
LOT 16	40.09
LOT 17	39.39
LOT 18	39.40
LOT 19	38.45
LOT 20	38.68
LOT 21	39.36
LOT 22	39.65
LOT 23	36.96
LOT 24	36.94
LOT 25	39.65
LOT 26	39.37
LOT 27	38.91
LOT 28	38.68
SECTION 28	
LOT 3	40.78
LOT 6	42.76
LOT 7	43.18
LOT 8	42.91
LOT 9	43.94
LOT 10	43.78
SECTION 33	
LOT 1	43.85
LOT 2	43.61
LOT 3	43.42
LOT 4	42.51
LOT 5	42.70
LOT 6	42.85
LOT 7	40.91
LOT 8	40.41
LOT 9	39.66
LOT 10	39.01
LOT 11	39.77
LOT 12	39.88
TOTAL AREA	1379.73
FEDERAL INTEREST LAND RESURVEYED	

LEGEND	
◇	Original corner previously remonumented
◆	Original corner remonumented this survey
□	Corner previously established or reestablished
■	Corner previously established; remonumented this survey
●	Corner established this survey
+	Corner point calculated, no monument set

UNITED STATES DEPARTMENT OF THE INTERIOR
 BUREAU OF LAND MANAGEMENT

Portland, Oregon

This plat is strictly conformable to the approved field notes, and the survey, having been correctly executed in accordance with the requirements of law and the regulations of this Bureau, is hereby accepted.

For the Director

Mary J. M. Hart

Chief Cadastral Surveyor of Oregon

January 7, 2013
 Date

