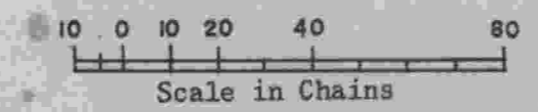
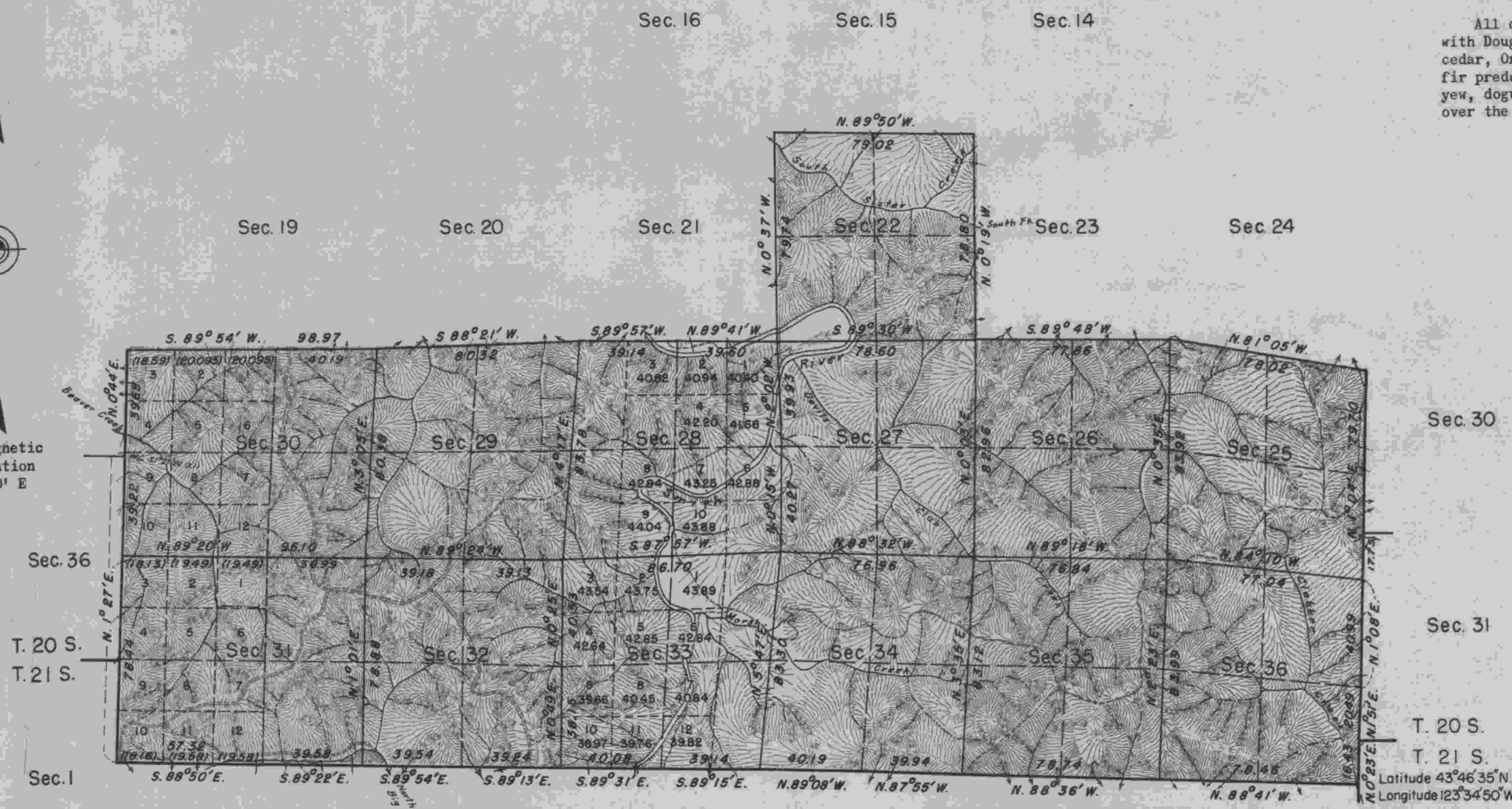


TOWNSHIP 20 SOUTH, RANGE 8 WEST, OF THE WILLAMETTE MERIDIAN, OREGON. DEPENDENT RESURVEY

Surveyed by William P. Wright in 1884

This plat represents a retracement and reestablishment of portions of the original township boundary and subdivisional lines designed to restore the corners in their true original locations according to the best available evidence. The lottings and areas are as shown on the plat approved August 4, 1884 except as new areas are shown hereon.

All of this land is heavily timbered with Douglas fir, western hemlock, red cedar, Oregon maple and alder, the Douglas fir predominating. Chinquapin, madrona, yew, dogwood and cascara are scattering over the region.



Area Resurveyed: 8,659.00 Acres

UNITED STATES DEPARTMENT OF THE INTERIOR
BUREAU OF LAND MANAGEMENT
Washington, D. C., February 7, 1952

This plat is strictly conformable to the approved field notes, and the survey, having been correctly executed in accordance with the requirements of law and the regulations of this Bureau, is hereby accepted.

For the Director
William F. Richards
Chief, Branch of Surveys

Dependent resurvey of portions of south, east and west boundaries, and subdivisional lines executed by Thomas A. Tillman June 8 to October 10, 1950 under Special Instructions for Group 292 Oregon, dated April 13, 1950.