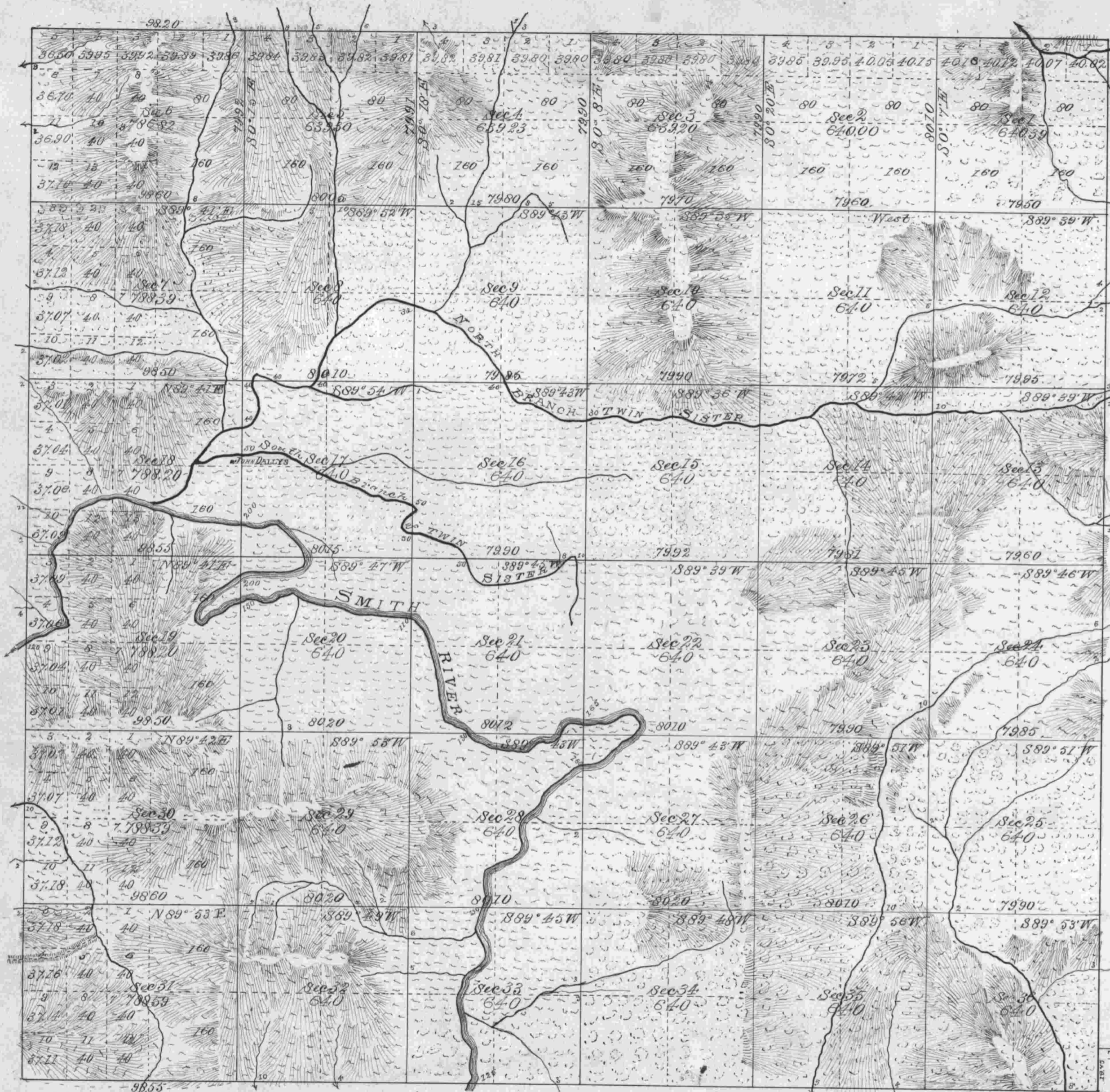


Township No. 20 South Range No. 8 West Willamette Meridian, Oregon.

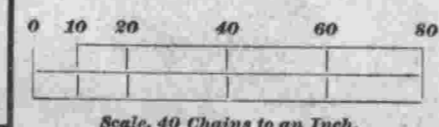
1096



ACCEPTED BY THE HON. COMMISSIONER G. L. O. August 19, 1884

Total number of Acres 23,926.71

SURVEYS DESIGNATED.	BY WHOM SURVEYED.	NO.	DATE OF CONTRACT.	Amount of Surveys.			WHEN SURVEYED.	MEAN DECLINATION.
				Miles.	Chs.	Ls.		
Township Lines	William P Wright	486	Aug 1 st 1883					
Subdivisions	do do do	do	do do do	61	10	70	April 20 May 20 1884	20° 15' E



The above map of the Subdivision of Township No. 20 South of Range No. 8 West of the Willamette Meridian, Oregon, is strictly conformable to the Field Notes of the survey thereof on file in this office, which have been examined and approved.

U. S. Surveyor-General's Office,
Portland, Oregon,
August 11, 1884 James A. Vanman
Surveyor-General of Oregon.