

TOWNSHIP 20 SOUTH, RANGE 7 WEST, OF THE WILLAMETTE MERIDIAN, OREGON

DEPENDENT RESURVEY AND SUBDIVISION OF SECTION 20

FILED
 Date: 3/26/2015 By: JC
 This survey consists of:
 Map: PLAT: T20-7 2015-1
 Narrative: LINE NOTES: VOL 58
 Corner Rpt: PGS 23136-23149
 DOUGLAS COUNTY
 SURVEYOR

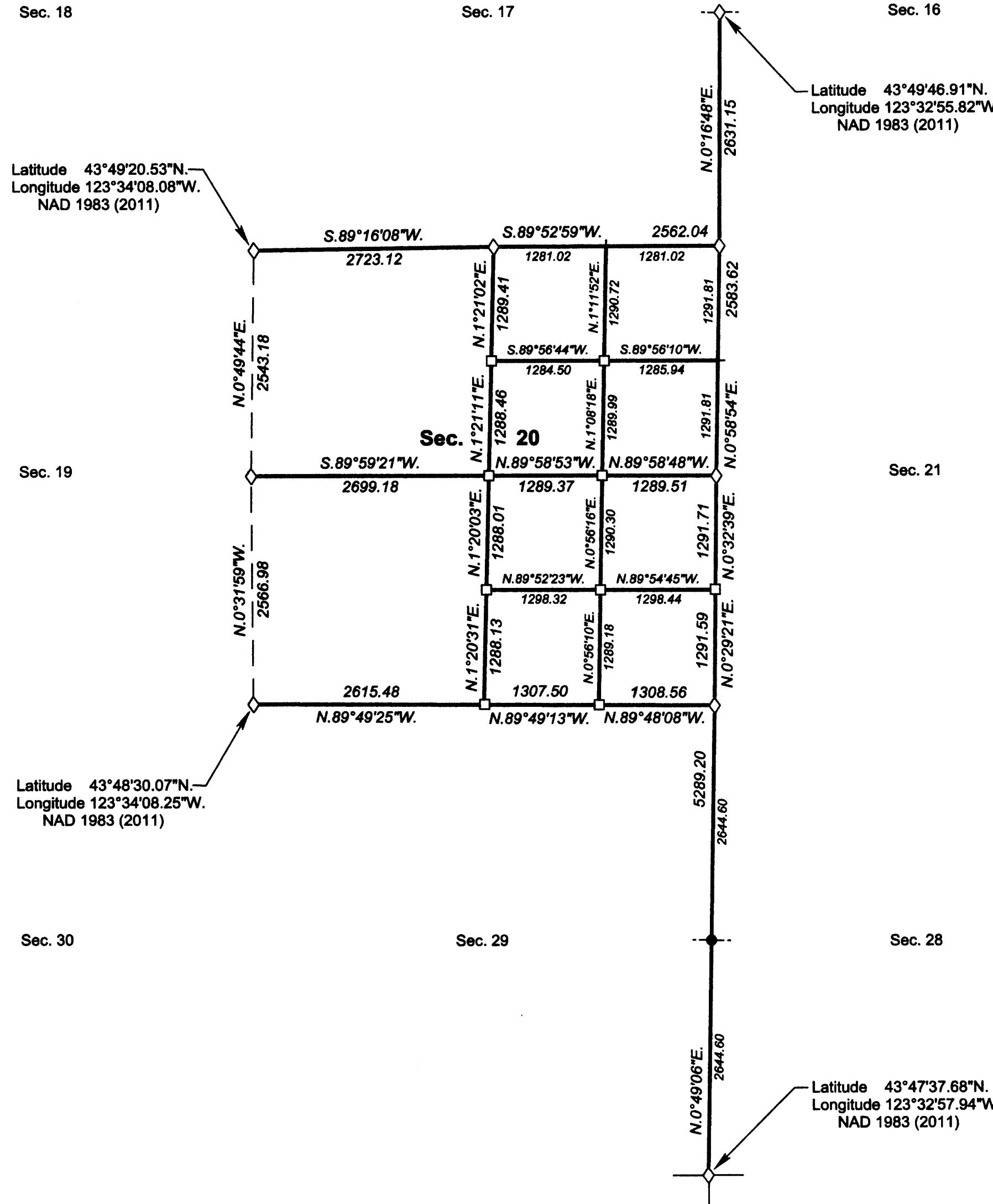
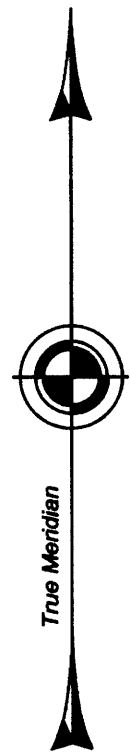
OFFICIALLY FILED: 3/2/2015

A history of surveys, corner descriptions, and other relevant information are contained in the field notes.

This plat represents the dependent resurvey of a portion of the subdivisional lines, designed to restore the corners in their true original locations according to the best available evidence, and the subdivision of section 20, Township 20 South, Range 7 West, Willamette Meridian, Oregon.

Official areas based on the measurements of this survey have been returned for Federal interest land where indicated. Aliquot part legal subdivisions retain their aliquot characteristics and refer to precisely the same land as that which was previously identified by its original survey or description. Except as indicated hereon, the lottings and areas are as shown on the plat approved November 9, 1892.

Survey executed by George M. Winter, Cadastral Surveyor, beginning May 8, 2013, and completed September 12, 2013, pursuant to special instructions approved May 8, 2013, for Group No. 2699, Oregon.



Latitude 43°49'20.53"N.
 Longitude 123°34'08.08"W.
 NAD 1983 (2011)

Latitude 43°49'46.91"N.
 Longitude 123°32'55.82"W.
 NAD 1983 (2011)

Latitude 43°48'30.07"N.
 Longitude 123°34'08.25"W.
 NAD 1983 (2011)

Latitude 43°47'37.68"N.
 Longitude 123°32'57.94"W.
 NAD 1983 (2011)

LEGEND	
◇	Original corner previously remonumented
□	Corner previously established or reestablished
●	Corner reestablished this survey
+	Corner point calculated, no monument set

LEGAL SUBDIVISION	OFFICIAL ACRES
SECTION 20	
NE1/4 NE1/4	38.04
NW1/4 NE1/4	37.98
SE1/4 NE1/4	38.15
NE1/4 SE1/4	38.35
TOTAL AREA	152.52
FEDERAL INTEREST LAND RESURVEYED	

UNITED STATES DEPARTMENT OF THE INTERIOR
 BUREAU OF LAND MANAGEMENT
 Portland, Oregon

This plat is strictly conformable to the approved field notes, and the survey, having been correctly executed in accordance with the requirements of law and the regulations of this Bureau, is hereby accepted.

For the Director
Maury J. M. Hunt
 Chief Cadastral Surveyor of Oregon

November 18, 2014

 Date

