

TOWNSHIP 20 SOUTH, RANGE 7 WEST, OF THE WILLAMETTE MERIDIAN, OREGON

DEPENDENT RESURVEY

FILED

Date: 10/18/2010 By: JC
 This survey consists of:
 Map: BLM LINE NOTES
 Narrative: VOL. 56
 Corner Rpt: PGS 22177-22213
 NO LINE CALLS IN LINE NOTES - CORNER INFO ONLY
DOUGLAS COUNTY
SURVEYOR

OFFICIALLY FILED: 9/23/2010

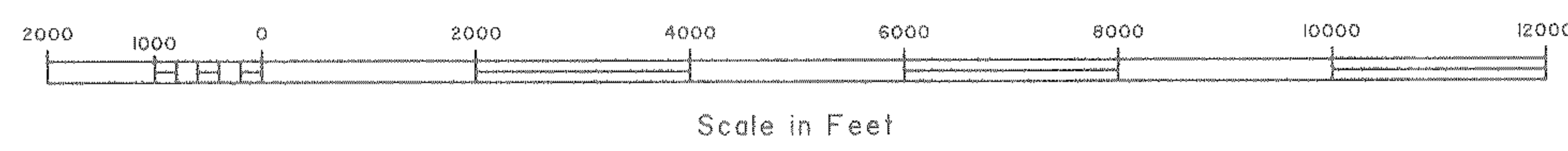
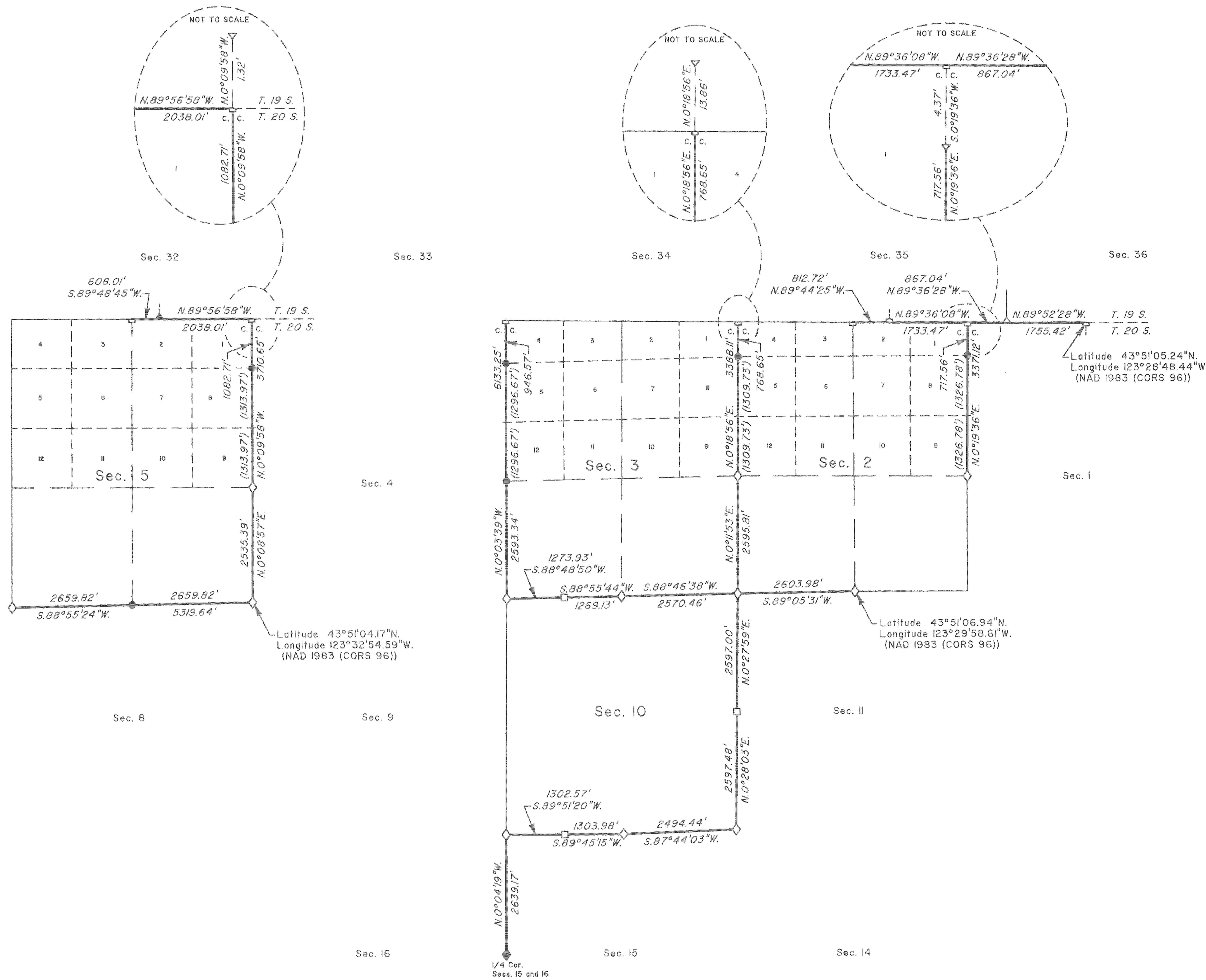
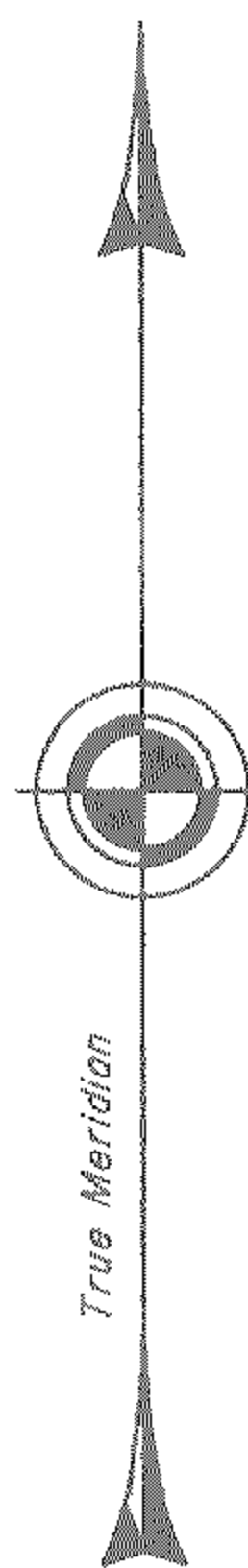
A history of surveys is contained in the field notes.

This plat represents a dependent resurvey of a portion of the south boundary T. 19 S., R. 7 W., and dependent resurvey of a portion of the subdivisional lines, T. 20 S., R. 7 W., Willamette Meridian, Oregon, designed to restore the corners in their true original locations according to the best available evidence.

Measured distances and directions have been adjusted by computer software that incorporates a least squares adjustment routine. The adjusted bearings and distances are reported to the nearest second and 0.01 foot.

The lottings and areas are as shown on the plat approved November 9, 1892.

The survey was executed by Daniel N. Patterson, Cadastral Surveyor, beginning July 30, 2007 and completed October 8, 2008 pursuant to Special Instructions dated April 3, 2007 under Group Number 2165, Oregon.



LEGEND	
◇	Original corner previously remonumented
◆	Original corner remonumented this survey
□	Corner previously established or reestablished
●	Corner established or reestablished this survey
+	Corner point calculated, no monument set

UNITED STATES DEPARTMENT OF THE INTERIOR
BUREAU OF LAND MANAGEMENT

Portland, Oregon

This plat is strictly conformable to the approved field notes, and the survey, having been correctly executed in accordance with the requirements of law and the regulations of this Bureau, is hereby accepted.

For the Director

Chief Cadastral Surveyor of Oregon

Date