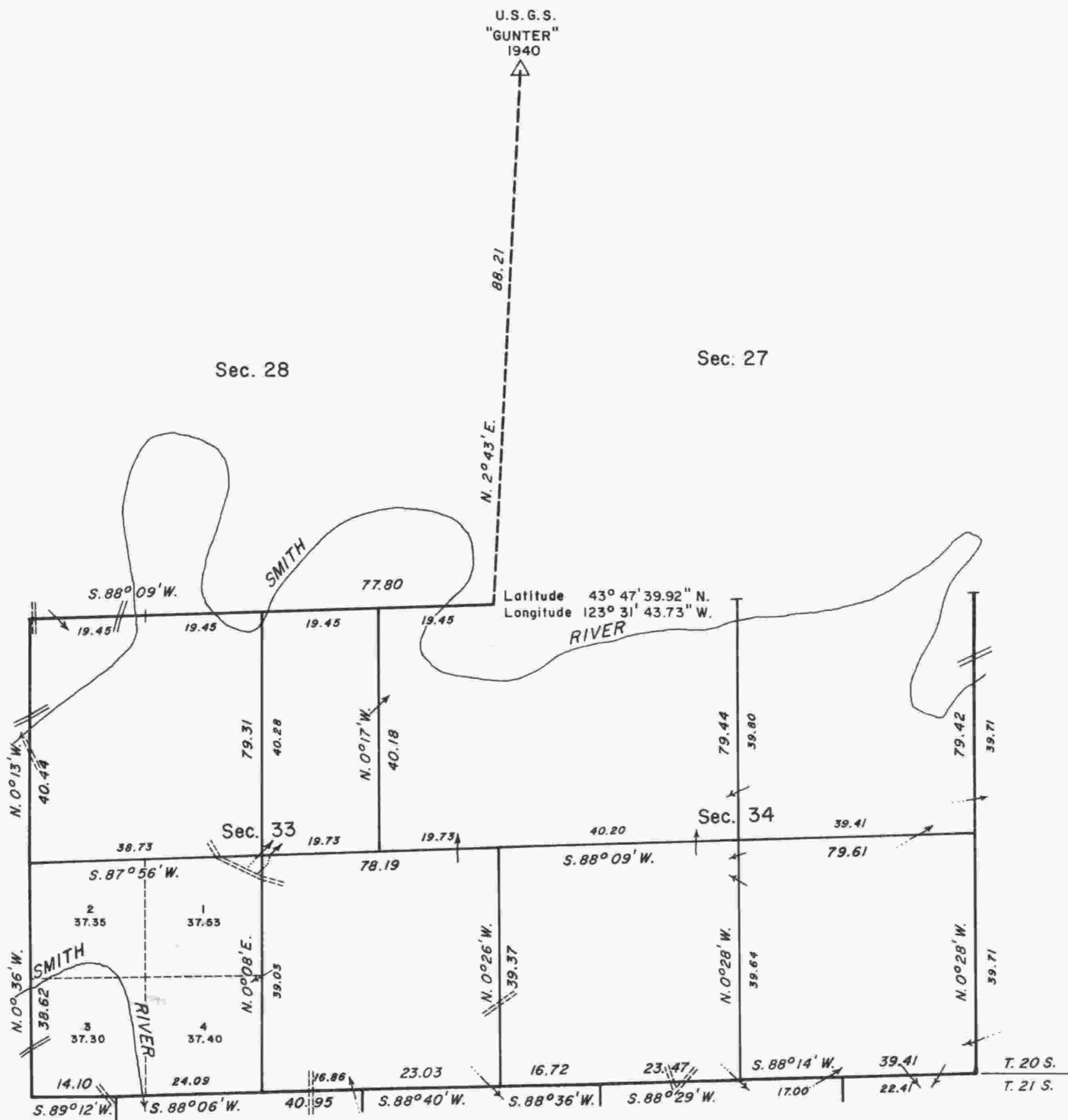


# TOWNSHIP 20 SOUTH, RANGE 7 WEST, OF THE WILLAMETTE MERIDIAN, OREGON. DEPENDENT RESURVEY AND SUBDIVISION OF SECTIONS



The history of surveys is contained in the field notes.

This plat represents a dependent resurvey of a portion of the south boundary and subdivisional lines, T. 20 S., R. 7 W., Willamette Meridian, Oregon, designed to restore the corners in their true original locations according to the best available evidence, and the subdivision of sections 33 and 34.

Except as shown hereon, the lottings and areas are as shown on the plat approved November 9, 1892.

The survey was executed by Wayne L. Rogers and Lance J. Bishop, Cadastral Surveyors, beginning August 10, 1983, and completed May 30, 1984, pursuant to Special Instructions dated May 23, 1983, under Group Number 1159, Oregon.

Timber in this area consists of fir, hemlock, cedar, yew, alder, madrone, chinquapin, ash, maple, cherry, apple, cascara, and willow.

UNITED STATES DEPARTMENT OF THE INTERIOR  
BUREAU OF LAND MANAGEMENT  
Portland, Oregon January 23, 1987

This plat is strictly conformable to the approved field notes, and the survey, having been correctly executed in accordance with the requirements of law and the regulations of this Bureau, is hereby accepted.

For the Director

*William W. Glenn*

Chief Cadastral Surveyor of Oregon

