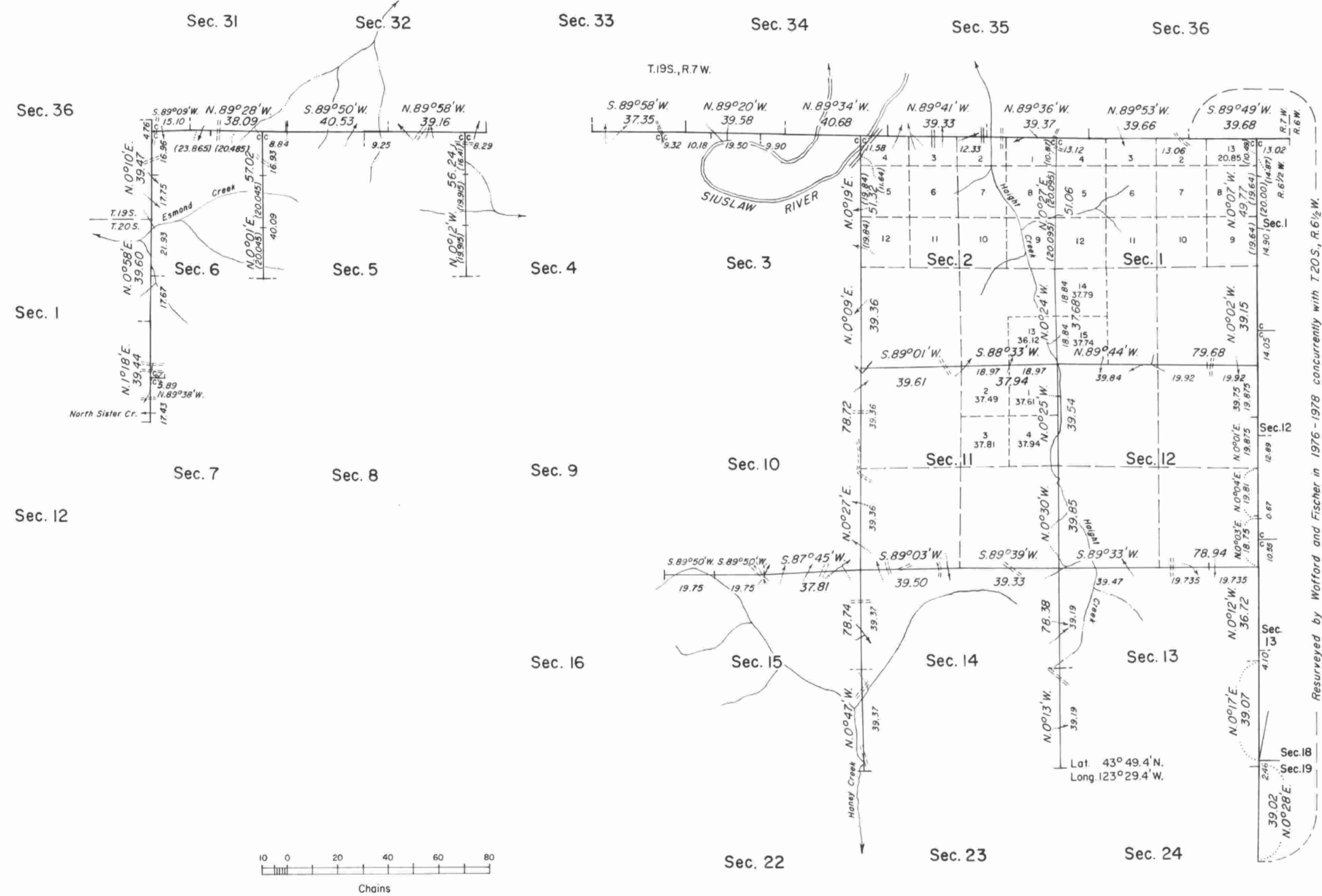


# TOWNSHIP 20 SOUTH, RANGE 7 WEST, OF THE WILLAMETTE MERIDIAN, OREGON.

## DEPENDENT RESURVEY



A history of surveys is contained in the field notes.

This plat represents a dependent resurvey of a portion of the east boundary T. 20 S., R. 8 W.; a portion of the east boundary, T. 19 S., R. 8 W.; a portion of the south boundary, T. 19 S., R. 7 W.; and a portion of the subdivisional lines, T. 20 S., R. 7 W., Willamette Meridian, Oregon, designed to restore the corners in their true original locations according to the best available evidence.

Except as shown hereon, the lottings and areas are as shown on the plat approved November 9, 1892.

Survey executed by Harvey E. Wofford and Lester E. Fischer, Cadastral Surveyors, from August 13, 1976, to August 4, 1978, under Special Instructions dated July 29, 1976, and Supplemental Special Instructions dated July 21, 1977, which provided for the surveys included under Group No. 913, Oregon.

UNITED STATES DEPARTMENT OF THE INTERIOR  
BUREAU OF LAND MANAGEMENT  
Denver, Colorado January 28, 1980

This plat is strictly conformable to the approved field notes, and the survey, having been correctly executed in accordance with the requirements of law and the regulations of this Bureau, is hereby accepted.

For the Director

Chief, Cadastral Survey  
Examination and Approval Staff

Timber in this area consists of fir, hemlock, alder, maple, cedar, yew, madrone, chinquapin, and dogwood.