

TOWNSHIP 20 SOUTH, RANGE 6 WEST, OF THE WILLAMETTE MERIDIAN, OREGON

DEPENDENT RESURVEY AND SUBDIVISION OF SECTION 33

FILED
 Date: 10/19/2011 By: JC
 This survey consists of:
 Map: VOL 57
 Narrative: PAGES
 Corner Rpt: 22612-22642

DOUGLAS COUNTY
 SURVEYOR

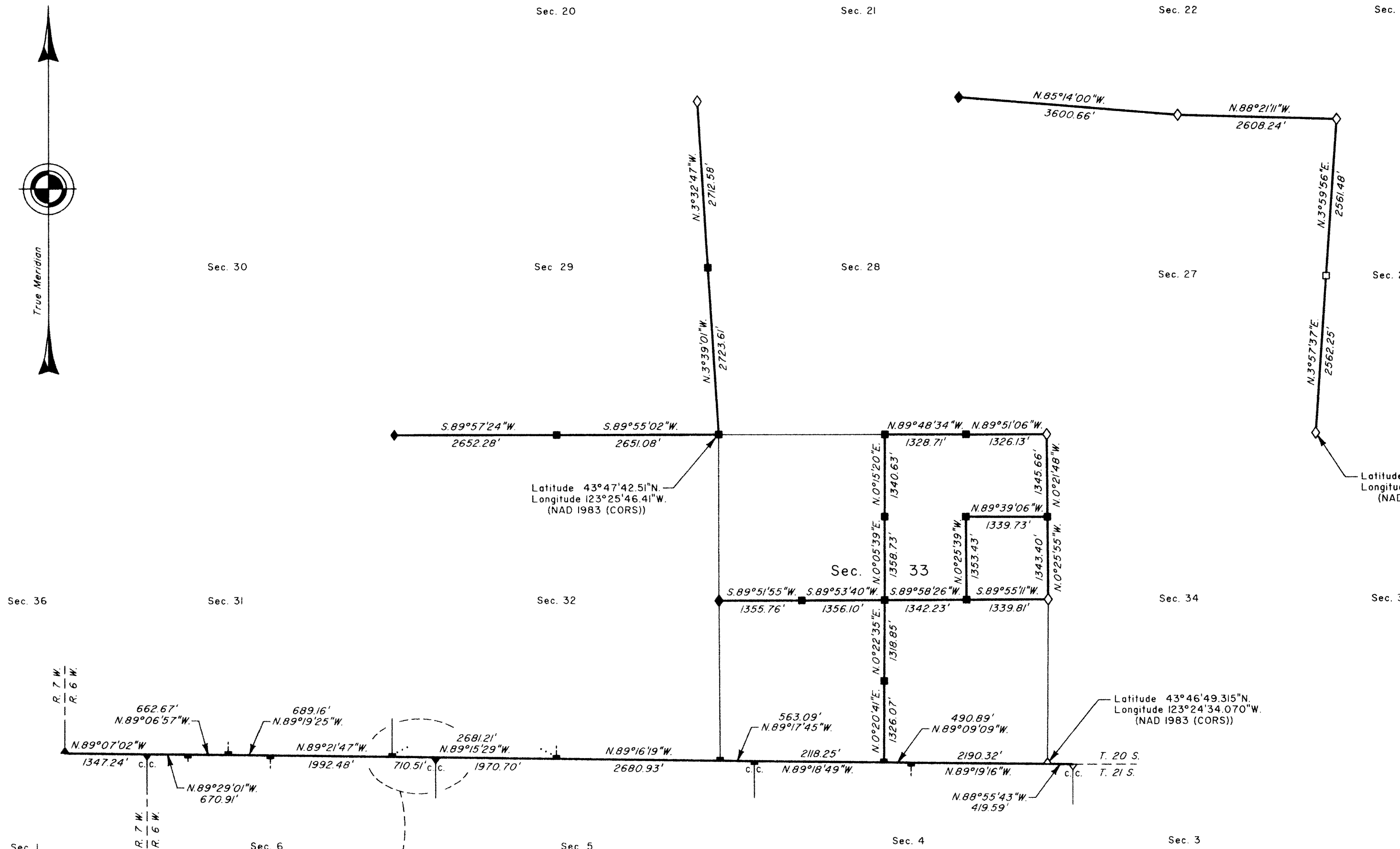
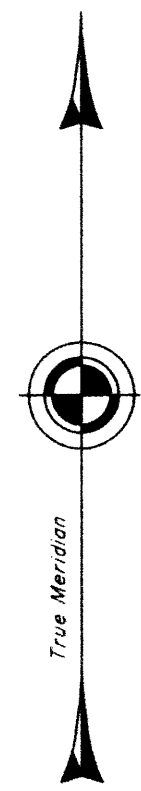
A history of surveys is contained in the field notes.

This plat represents the dependent resurvey of a portion of the south boundary and subdivisional lines, T. 20 S., R. 6 W., Willamette Meridian, Oregon, designed to restore the corners in their true original locations according to the best available evidence, and the subdivision of section 33.

Actual quantity acreages have been returned for Federal interest lands where indicated. Changes in the official acreage of land described by aliquot part or lot number do not alter its description. Further subdivision of aliquot parts shall be in accordance with the manual. Further subdivision of official lots may only be by supplemental plat or official survey. Official acreage and lot designations of Federal interest land not affected by this survey are as shown on the plat approved January 23, 1873.

The survey was executed by A. Bert Skeesick, Cadastral Surveyor, and Robert H. Browning, Surveying Technician, beginning March 24, 2009, and completed July 7, 2009, pursuant to Special Instructions dated March 23, 2009, under Group Number 2268, Oregon.

OFFICIALLY FILED: 10/17/2011



LEGEND	
◊	Original corner previously remonumented
◆	Original corner remonumented this survey
□	Corner previously established or reestablished
■	Corner previously established or reestablished; remonumented this survey

UNITED STATES DEPARTMENT OF THE INTERIOR
 BUREAU OF LAND MANAGEMENT

Portland, Oregon

This plat is strictly conformable to the approved field notes, and the survey, having been correctly executed in accordance with the requirements of law and the regulations of this Bureau, is hereby accepted.

LEGAL SUBDIVISION	OFFICIAL ACRES
SECTION 33	
NW1/4 NE1/4	41.59
SE1/4 NE1/4	41.47

For the Director
John F. Sansonetti, Acting
 Chief Cadastral Surveyor of Oregon

8/18/2011
 Date

