

TOWNSHIP 20 SOUTH, RANGE 6 WEST, OF THE WILLAMETTE MERIDIAN, OREGON

RETRACEMENT

FILED

Date: 7/18/2011 By: JC

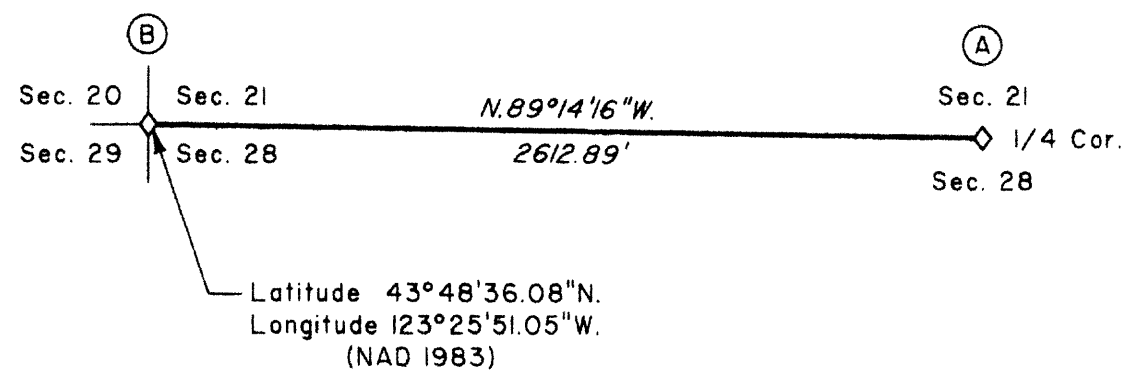
This survey consists of:

Map: VOL. 56 PAGE

Narrative: 22309

Corner Rpt: THIS PLAT REPRESENTS THE ENTIRE RECORD OF THE DEPENDENT RESURVEY

DOUGLAS COUNTY SURVEYOR



I, Daniel N. Patterson, Cadastral Surveyor, HEREBY CERTIFY upon honor, that in pursuance of Special Instructions bearing date of the 16th day of March 2007, I have retraced a portion of the subdivisional lines, Township 20 South, Range 6 West, of the Willamette Meridian, in the State of Oregon. Said retracement has been made in strict conformity with said Special Instructions, the Manual of Instructions for the Survey of the Public Lands of the United States, 1973, and in specific manner described on this plat.

Daniel N. Patterson
Cadastral Surveyor

4-01-11
Date

(A) The 1/4 sec. cor. of secs. 21 and 28, monumented with an iron post, 1 in. diam., firmly set, projecting 2 ins. above ground, with brass cap mkd.

S 21
1/4
S 28

1950

from which the remains of an original bearing tree

A decayed hemlock stump, size indeterminate, bears S. 35° W., 10.6 ft. dist., with scribe marks BT visible on partially healed blaze.

and the remains of bearing trees mkd. by Lytle in 1950

A decayed hemlock stump, size indeterminate, bears S. 1 3/4° W., 29.0 ft. dist., with no marks visible.

A decayed hemlock stump, size indeterminate, bears N. 30 1/2° W., 19.8 ft. dist., with no marks visible.

and new bearing trees

A hemlock, 6 ins. diam., bears N. 33° E., 7.1 ft. dist., mkd. 1/4 S21 BT.

A hemlock, 11 ins. diam., bears S. 29 3/4° E., 8.1 ft. dist., mkd. 1/4 S18 BT.

(B) The cor. of secs. 20, 21, 28, and 29, monumented with an iron post, 2 ins. diam., firmly set, projecting 6 ins. above ground, with brass cap mkd.

T 20 S R 6 W
S 20 | S 21
S 29 | S 28
1950

from which the remains of a bearing tree mkd. by Lytle in 1950

A fir, 26 ins. diam., bears S. 34° E., 25.1 ft. dist., with a healed blaze.

and bearing trees mkd. by Daniel W. Baker, Oregon Professional Land Surveyor No. 1978; in 1998, recorded in the Lane County Surveyors Office, C.S. File No. 34998

A fir, 16 ins. diam., bears N. 80 1/2° E., 15.1 ft. dist., with a healed blaze.

A fir, 12 ins. diam., bears S. 50 3/4° W., 9.5 ft. dist., with a healed blaze.

A fir, 13 ins. diam., bears N. 40 1/4° W., 5.3 ft. dist., with a healed blaze.

This plat represents the entire record of the retracement of a portion of the subdivisional lines, T. 20 S., R. 6 W., Willamette Meridian, Oregon.

The history of surveys pertaining to this retracement is as follows:

In 1872, John H. McClung, U.S. Deputy Surveyor, surveyed the north, south, and west boundaries and the subdivisional lines.

In 1950, Marvin J. Lytle, Cadastral Engineer, resurveyed a portion of the north boundary subdivisional lines.

The retracement data were thoroughly verified and only the true line data is given hereon. Only those lines bounding or crossing public lands were blazed.

The directions of the lines were determined by direct solar observation, carried forward by sustained angulation, and refer to the true meridian.

An analysis of the unadjusted field data assured a closure not exceeding 1:4000 in error. The measured distance and direction have been adjusted by computer software that incorporates a least squares adjustment routine. The adjusted bearing and distance are reported to the nearest second and 0.01 foot.

The geographic position shown hereon was determined from a direct tie to a temporary point for which a position had been determined utilizing a dual frequency, carrier phase GPS receiver, to an accuracy level of 0.20 meters or better, relative to the National Spatial Reference System, using the National Geodetic Survey On-line Positioning User Service (OPUS).

Each new bearing tree has a 2 1/2 inch x 1/4 inch magnetic nail (Mag Nail) driven at the base on right side center, unless otherwise noted in the corner description.

This retracement was executed by Daniel N. Patterson, Cadastral Surveyor, beginning April 2, 2007 and completed April 9, 2007 in accordance with the specification set forth in the Manual of Surveying Instructions, 1973; pursuant to Special Instructions dated March 16, 2007, approved March 21, 2007 and Assignment Instructions dated March 21, 2007, under Group Number 2300, Oregon, Administrative File Number O701. He was assisted by Lowell H. Pearson and Daniel B. Bliss, Surveying Technicians, and Matthew H. Goins, Laborer.

LEGEND

◊ Original corner previously remonumented

UNITED STATES DEPARTMENT OF THE INTERIOR
BUREAU OF LAND MANAGEMENT

Portland, Oregon

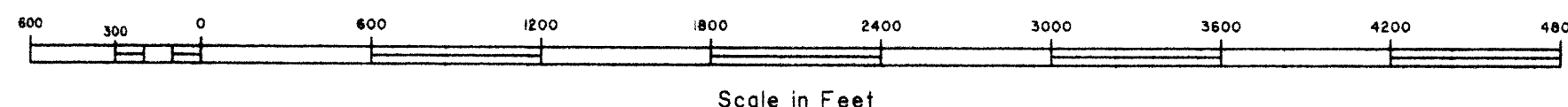
The retracement represented by this plat, having been correctly executed in accordance with the requirements of law and the regulations of this Bureau, is hereby accepted.

For the Director

John P. Rasmussen, Acting

Chief Cadastral Surveyor of Oregon

April 6, 2011
Date



OFFICIALLY FILED: 6/18/11