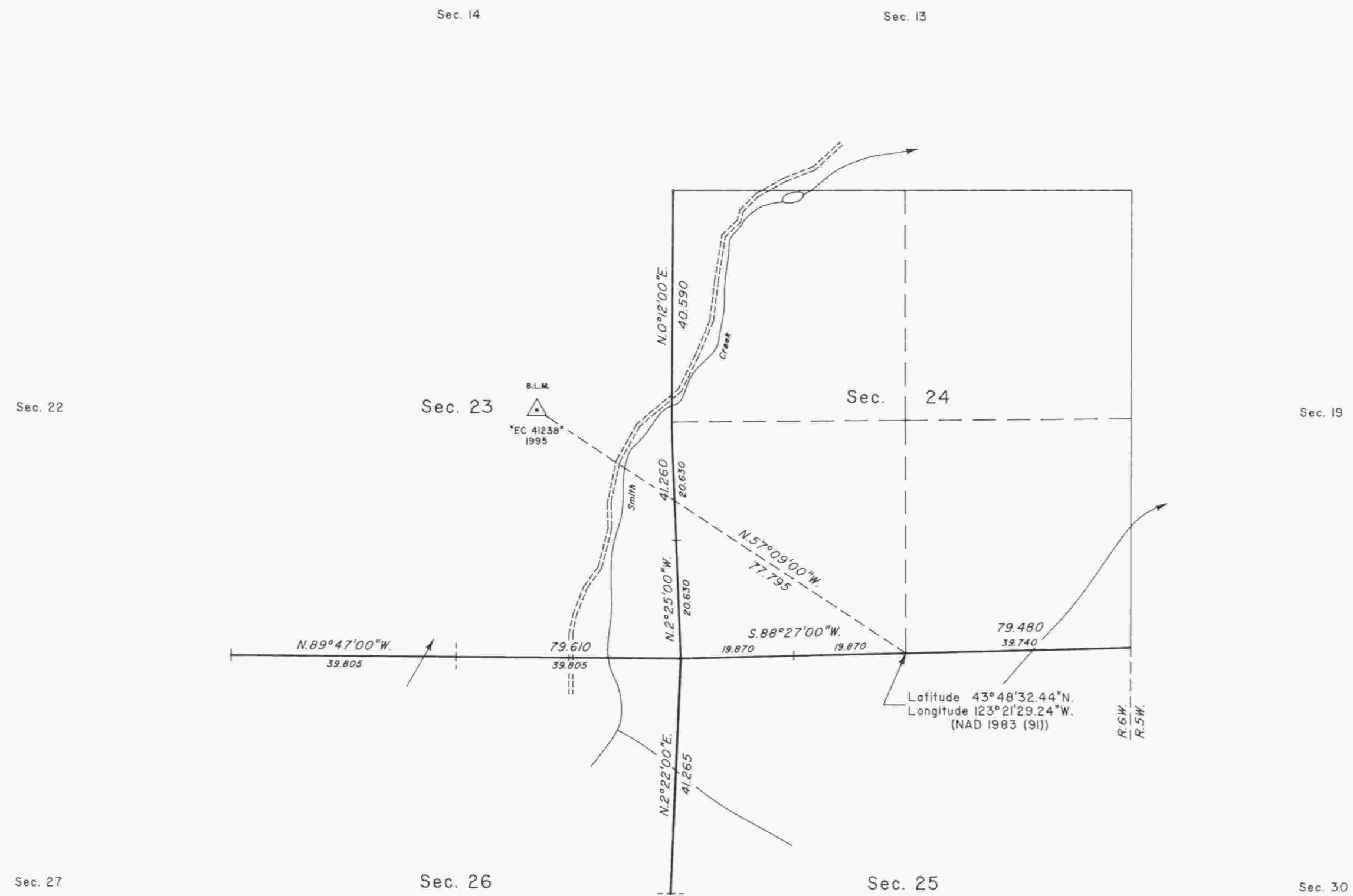


# TOWNSHIP 20 SOUTH, RANGE 6 WEST, OF THE WILLAMETTE MERIDIAN, OREGON

## CORRECTIVE DEPENDENT RESURVEY



A history of surveys is contained in the field notes.

This plat represents a corrective dependent resurvey of a portion of the subdivisional lines, T. 20 S., R. 6 W. Willamette Meridian, Oregon, designed to restore the corners in their true original locations according to the best available evidence.

The areas are as shown on the plat approved January 23, 1873.

The survey was executed by Daniel N. Patterson and Craig L. Wanless, Cadastral Surveyors, beginning January 30, 1995, and completed May 1, 1995, pursuant to Special Instructions dated January 26, 1995, under Group Number 1764, Oregon.

Timber in this area consists of Douglas fir, hemlock, cedar, chinquapin, yew, alder and maple.

The tie to the geodetic control station is reported as mean bearing and sea level distance.

UNITED STATES DEPARTMENT OF THE INTERIOR  
BUREAU OF LAND MANAGEMENT

Portland, Oregon                      January 8, 1997

This plat is strictly conformable to the approved field notes, and the survey, having been correctly executed in accordance with the requirements of law and the regulations of this Bureau, is hereby accepted.

For the Director

Chief Cadastral Surveyor of Oregon

