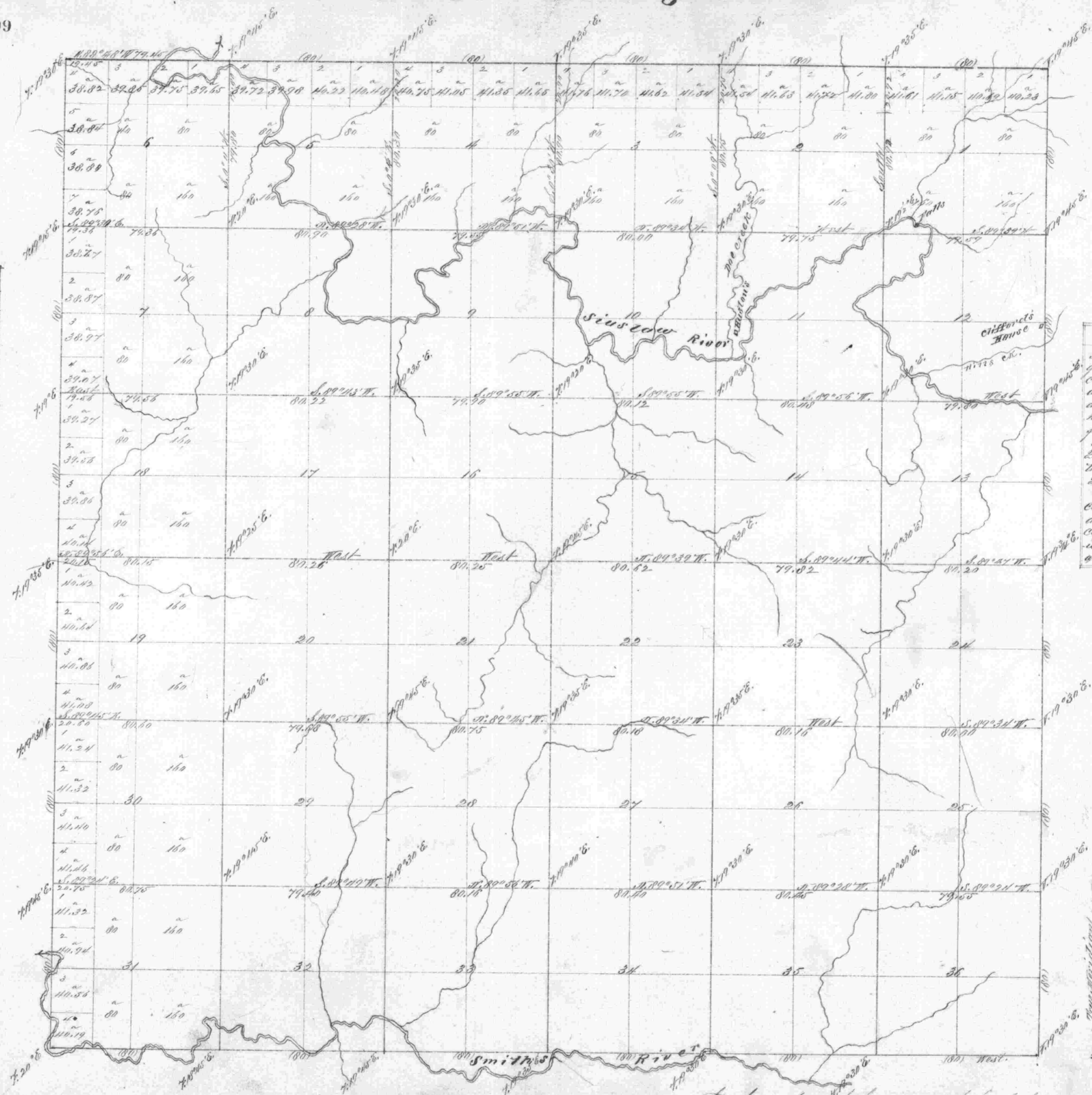


Original

Township 20 South, Range 6 West.

809

Area	
Sections	Acres.
1	640.00
2	640.00
3	640.00
4	640.00
5	640.00
6	640.00
7	640.00
8	640.00
9	640.00
10	640.00
11	640.00
12	640.00
13	640.00
14	640.00
15	640.00
16	640.00
17	640.00
18	640.00
19	640.00
20	640.00
21	640.00
22	640.00
23	640.00
24	640.00
25	640.00
26	640.00
27	640.00
28	640.00
29	640.00
30	640.00
31	640.00
32	640.00
33	640.00
34	640.00
35	640.00
Total	22400.00



**General Description**  
 The land in this township is generally rough mountains covered with a forest of fir, cedar and hemlock timber and with an undergrowth of the maple, hazel, fir, laurel, chinquapin, fern &c.  
 The soil on the mountains is 2<sup>d</sup> or 3<sup>d</sup> rate; while that along the streams is either 1<sup>st</sup> or 2<sup>d</sup> rate.  
 The timbered land of any consequence lies along Siuslaw and Smith rivers, and this consists of narrow bottoms heavily timbered and covered with dense undergrowth.

Scale, 40 chains to an inch.

Lines	Contractor	Contract		Sect. Surveyed			Commenced	Completed.
		No.	Date	Miles	Chains	Links		
Subdivisions	J.H. McClung	173	July 20, 1872	60	.05	37	Aug 15, 1872	Sept. 10, 1872.

The above Map of the Survey of the Subdivisional lines of T. 20 S., Range 6 West, 1st 4th 6th, Meridian, Oregon, is hereby compared to the original field notes and approved.  
 Surveyor General's Office  
 Eugene Jan. 23<sup>d</sup> 1873

W. H. Colwell  
 Surveyor General, Ore.