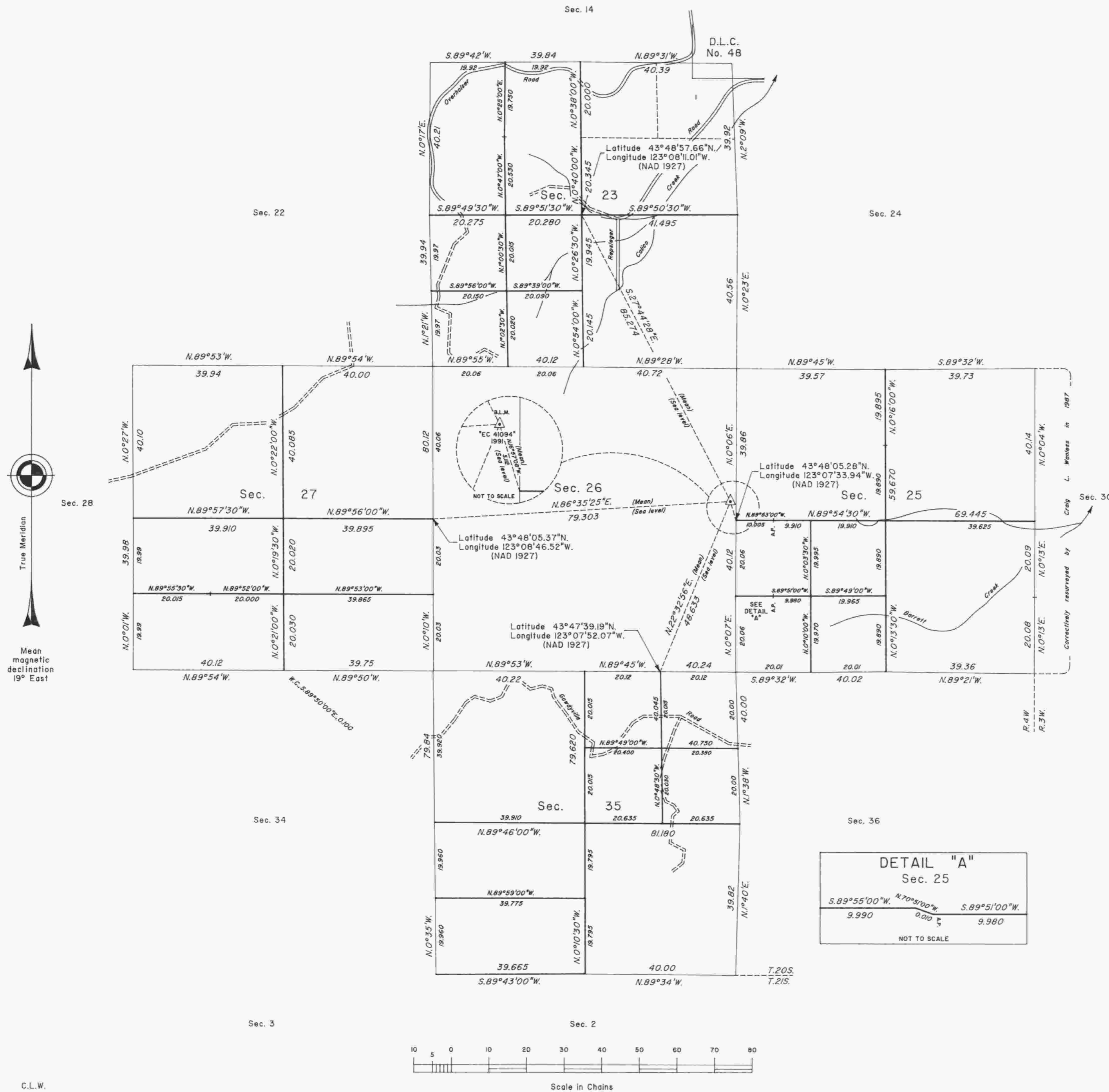


# TOWNSHIP 20 SOUTH, RANGE 4 WEST, OF THE WILLAMETTE MERIDIAN, OREGON

SHEET 1 OF 2

## DEPENDENT RESURVEY AND SUBDIVISION OF SECTIONS



A history of surveys is contained in the field notes.

This plat represents a dependent resurvey of a portion of the south boundary, a portion of the subdivisional lines, and a portion of the boundaries of Donation Land Claim No. 44, and the subdivision of sections 23, 25, 27, 31 and 35, T. 20 S., R. 4 W., Willamette Meridian, Oregon.

The lottings and areas are as shown on the plats approved September 24, 1855 and December 1, 1859, and the plat accepted September 16, 1977.

The survey was executed by Craig L. Wanless and Daniel N. Patterson, Cadastral Surveyors, beginning April 1, 1991, and completed April 12, 1993, pursuant to Special Instructions dated October 4, 1990, Supplemental Special Instructions dated June 24, 1991, and Second Supplemental Special Instructions dated January 8, 1992, under Group Number 1577, Oregon.

Timber in this area consists of fir, hemlock, cedar, alder, chinquapin, Pacific yew and maple.

Except as shown hereon, all exterior section lines were resurveyed by Floyd A. Brooks, Gurdon S. Popken, Gary T. Oviatt and Timothy A. Kent in 1970-71.

Ties to geodetic control stations are reported as mean bearings and sea level distances.

UNITED STATES DEPARTMENT OF THE INTERIOR  
BUREAU OF LAND MANAGEMENT

Portland, Oregon May 12, 1994

This plat is strictly conformable to the approved field notes, and the survey, having been correctly executed in accordance with the requirements of law and the regulations of this Bureau, is hereby accepted.

For the Director

*Wayne M. Gardner*  
Chief Cadastral Surveyor of Oregon