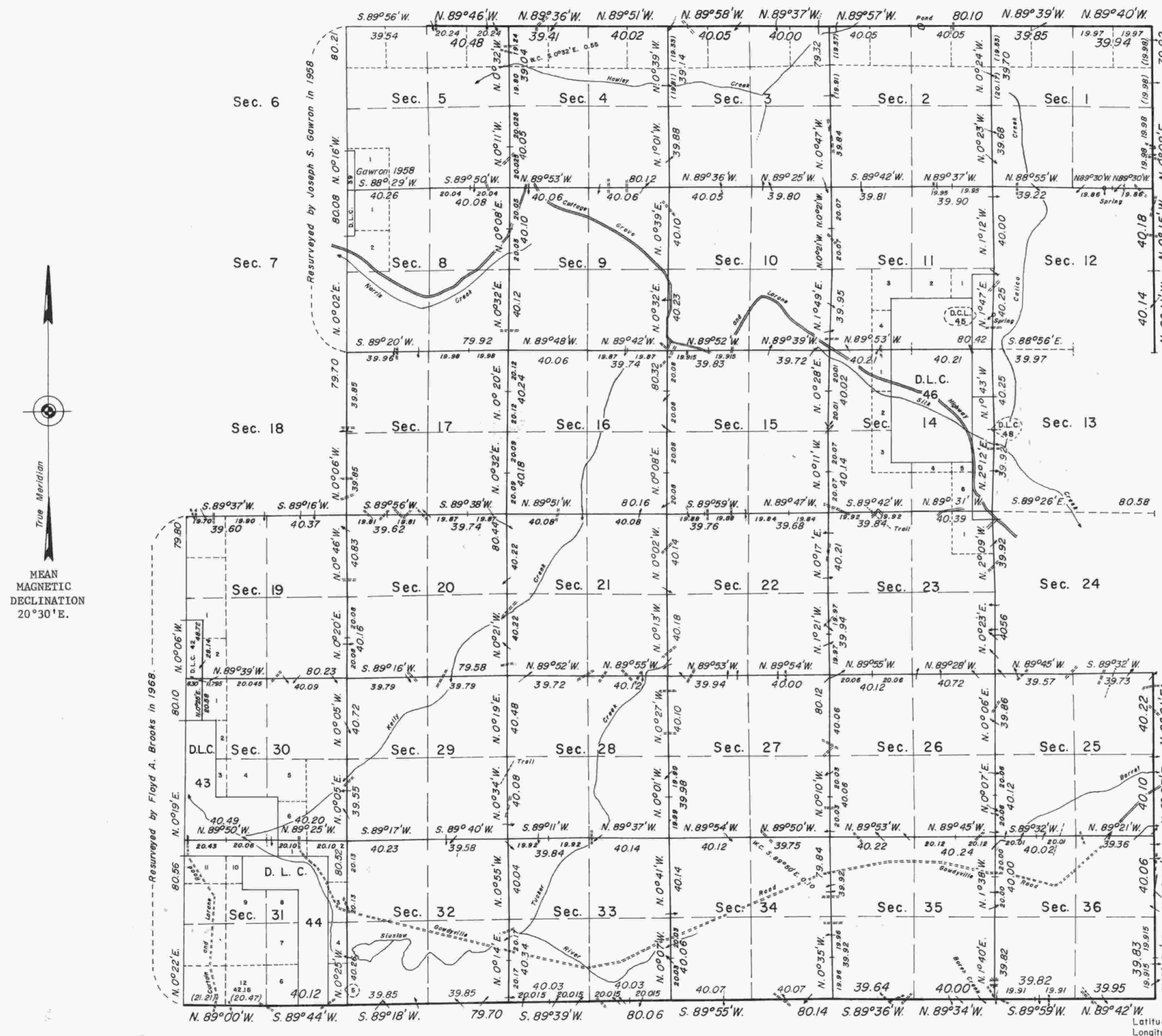


TOWNSHIP 20 SOUTH, RANGE 4 WEST, OF THE WILLAMETTE MERIDIAN, OREGON. DEPENDENT RESURVEY



True Meridian

MEAN
MAGNETIC
DECLINATION
20°30'E.

This plat represents a retracement and reestablishment of the south boundary, a portion of the east and north boundaries and subdivisional lines and the east boundary of Donation Land Claim No. 42, T. 20 S., R. 4 W., Willamette Meridian, Oregon designed to restore the corners in their true original location according to the best available evidence.

Except as indicated hereon, the lottings and areas are as shown on the plat approved September 24, 1855, and December 1, 1859.

The east boundary was surveyed by James E. Freeman, Deputy Surveyor, in 1851.

The north boundary was surveyed by Harvey Gordon and Josiah Preston, Deputy Surveyor, in 1854.

The south and west boundaries were surveyed by Harvey Gordon, Deputy Surveyor, in 1854.

The subdivisional lines of the township were surveyed by Harvey Gordon, in 1855.

Donation Land Claims within the township were surveyed by Gerry Welsh, Deputy Surveyor, in 1856.

A portion of the north and west boundaries and subdivisional lines were resurveyed and section 6 was subdivided by Joseph S. Gawron, Cadastral Surveyor, in 1958.

Certain original corners within and on the boundaries were remonumented without survey by William W. Glenn and Rollin D. Aanrud, Cadastral Surveyors, in 1963.

A portion of the west boundary was resurveyed by Floyd A. Brooks, Cadastral Surveyor, in 1967-68.

The resurvey, was executed by Floyd A. Brooks, Curdon S. Popken, Gary T. Oviatt and Timothy A. Kent, Cadastral Surveyors from August 13, 1970 to October 8, 1971 under Special Instructions dated July 30, 1970 which provide for the surveys included under Group No. 724, Oregon.

UNITED STATES DEPARTMENT OF THE INTERIOR
BUREAU OF LAND MANAGEMENT
Washington, D.C. September 16, 1977

This plat is strictly conformable to the approved field notes, and the survey, having been correctly executed in accordance with the requirements of law and the regulations of this Bureau, is hereby accepted.

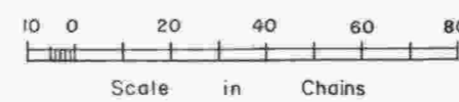
For the Director

J. J. Voorhes

Acting Chief, Division of Cadastral Survey

"Suspension, December 18, 1986, see File 9600(OR-942)."

Timber in this area consists of fir, hemlock, cedar, madrone, maple, alder, chinquapin and oak.



Latitude 43°46.8' N.
Longitude 123°06.4' W.