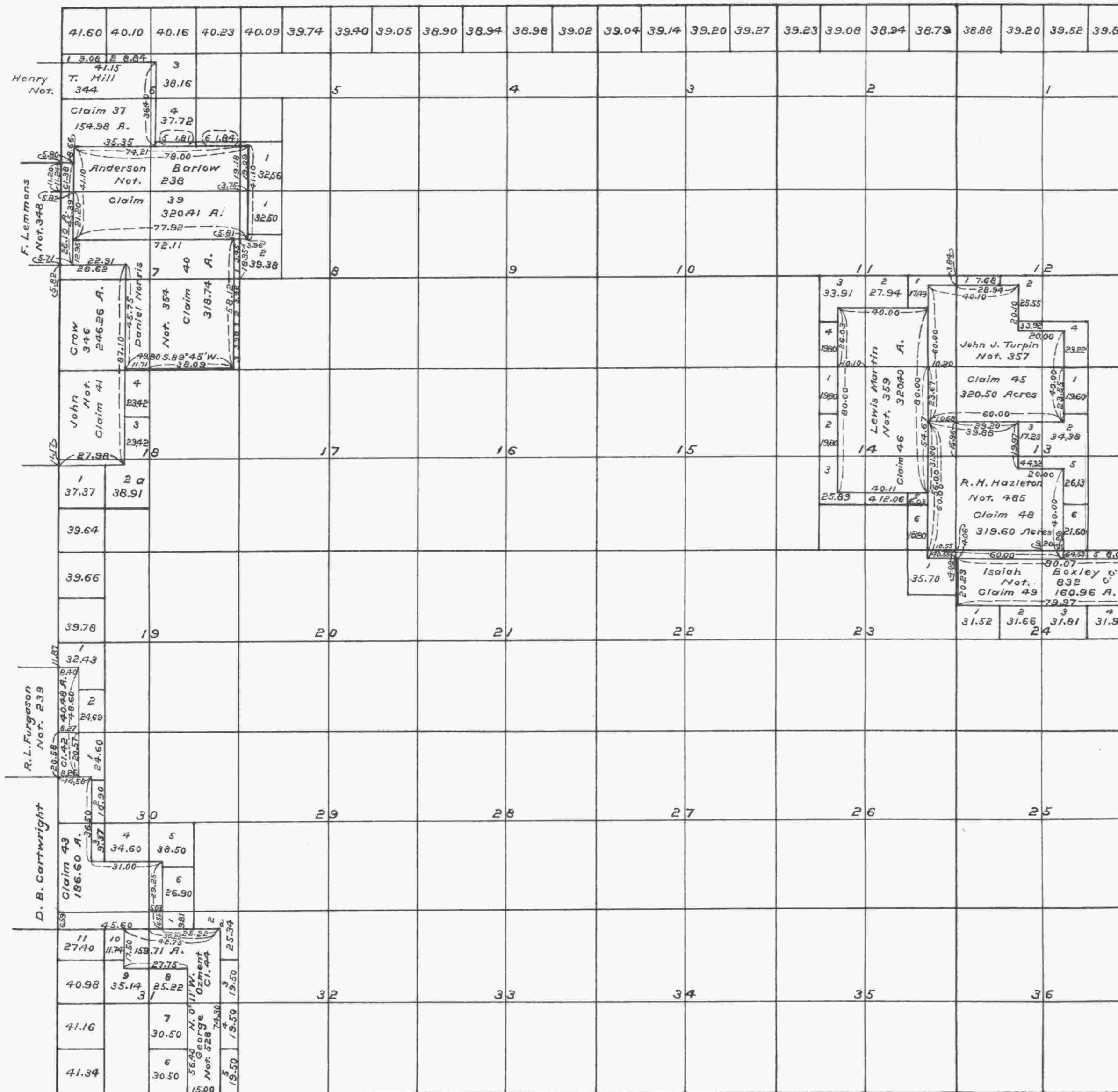


Township No 20 South Range No 4 West of the Willamette Meridian, Oregon.



The above Map of the surveys of claims in Township No. 20 South Range No. 4 West of the Willamette Meridian State of Oregon is strictly conformable to the field notes of the Surveys thereof on file in this Office, which have been examined and approved.
 Surveyor General's Office
 Eugene City, December 1st, 1859.

(Signed)
 W. W. Chapman
 Surveyor General of Oregon.

I certify this to be a correct copy of the original plat on file in this office.
 District Cadastral Engineer's Office,
 Portland, Oregon, October 31, 1925.

E. J. Randall
 District Cadastral Engineer.