

# TOWNSHIP 19 SOUTH, RANGE 10 WEST, OF THE WILLAMETTE MERIDIAN, OREGON

## DEPENDENT RESURVEY AND SUBDIVISION OF SECTIONS



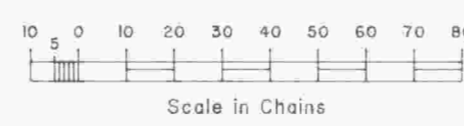
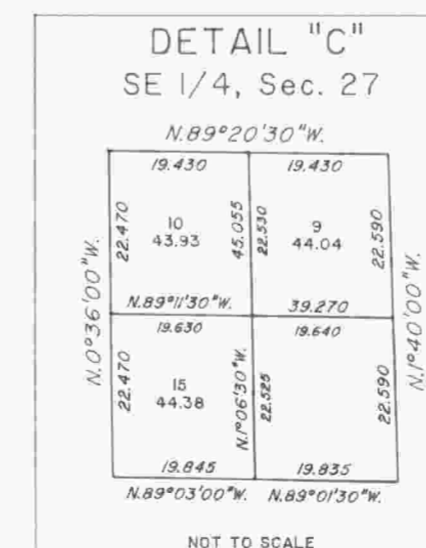
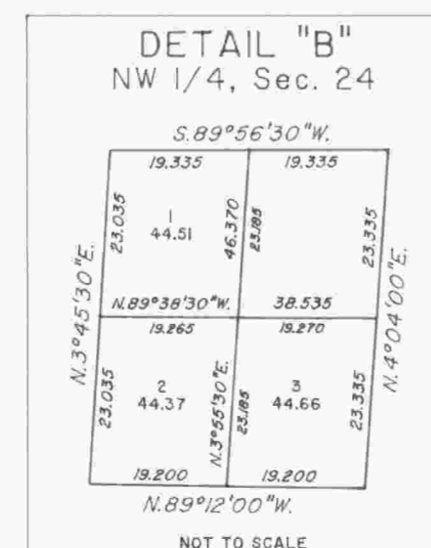
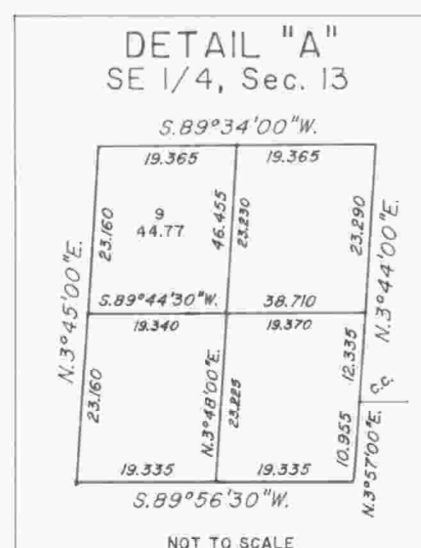
A history of surveys is contained in the field notes.

This plat represents a dependent resurvey of the east boundary and subdivisional lines, T. 19 S., R. 10 W., Willamette Meridian, Oregon, designed to restore the corners in their true original locations according to the best available evidence, and the subdivision of sections 13, 24 and 27.

Except as shown hereon, the lottings and areas are as shown on the plat approved February 12, 1901.

The survey was executed by Robert W. Dahl, Cadastral Surveyor, beginning August 4, 1988, and completed October 17, 1989, pursuant to Special Instructions dated June 23, 1988, under Group Number 1450, Oregon.

Timber in this area consists of Douglas fir, hemlock, maple, alder, cedar, spruce, cherry and chittum.



UNITED STATES DEPARTMENT OF THE INTERIOR  
BUREAU OF LAND MANAGEMENT

Portland, Oregon June 3, 1992

This plat is strictly conformable to the approved field notes, and the survey, having been correctly executed in accordance with the requirements of law and the regulations of this Bureau, is hereby accepted.

For the Director

*Wayne M. Gardner*  
Chief Cadastral Surveyor of Oregon