

TOWNSHIP 19 SOUTH, RANGE 10 WEST, OF THE WILLAMETTE MERIDIAN, OREGON.

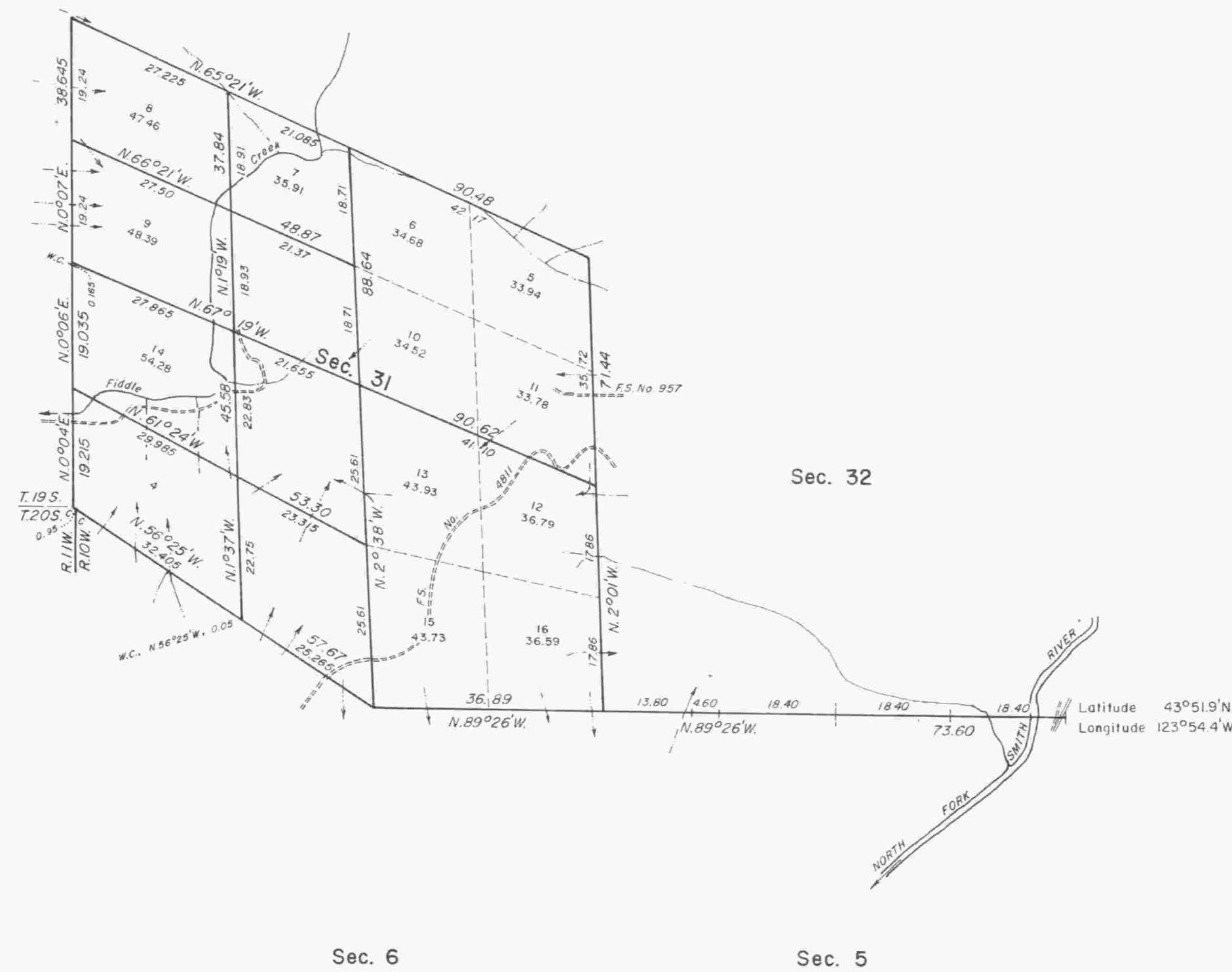
DEPENDENT RESURVEY AND SUBDIVISION OF SECTION 31

Sec. 25

Sec. 30

Sec. 29

Sec. 36

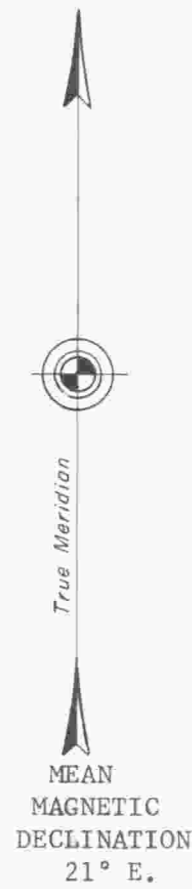


A history of surveys is contained in the field notes.

This plat represents a dependent resurvey of a portion of the south and west boundaries and subdivisional lines, designed to restore the corners in their true original locations according to the best available evidence, and the subdivision of section 31, T. 19 S., R. 10 W., Willamette Meridian, Oregon.

Except as indicated hereon, the lottings and areas are as shown on the plat approved February 12, 1901.

Survey executed by Peter A. Peterson, Glenn F. Goodson, and John P. Lee, Cadastral Surveyors, beginning August 11, 1978, and completed August 31, 1979, pursuant to Special Instructions dated July 28, 1978, for Group No. 948, Oregon.



UNITED STATES DEPARTMENT OF THE INTERIOR
BUREAU OF LAND MANAGEMENT
Denver, Colorado August 27, 1980

This plat is strictly conformable to the approved field notes, and the survey, having been correctly executed in accordance with the requirements of law and the regulations of this Bureau, is hereby accepted.

For the Director

Acting Chief, Cadastral Survey
Examination and Approval Staff



Timber in this area consists of fir, alder, maple, hemlock, cedar, cascara, and chinquapin.

gee

LDG