

FILED

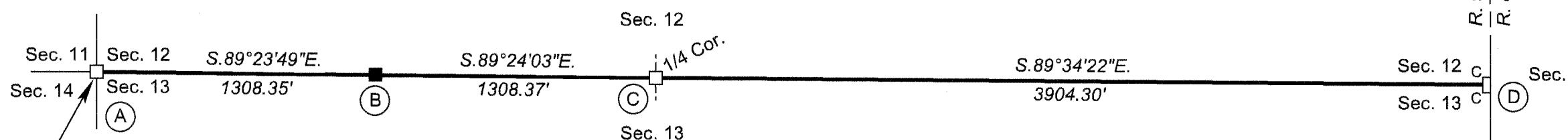
Date: 8/21/2017 By: JC
This survey consists of:
Map: PLAT: T19-9 2017-1
Narrative: VOL. 58 PAGES
Corner Rpt: 23422

TOWNSHIP 19 SOUTH, RANGE 9 WEST, OF THE WILLAMETTE MERIDIAN, OREGON

DEPENDENT RESURVEY

NO SEPARATE LINE NOTES
ALL INFORMATION IS ON THE PLAT
DOUGLAS COUNTY
SURVEYOR

Latitude 43°55'45.86"N
Longitude 123°43'42.73"W
NAD 1983 (2011)



- (A) The cor. of secs. 11, 12, 13, and 14, perpetuated by Ward, PLS No. 1091, in 2002, monumented with an iron post, 2 1/2 ins. diam., firmly set, projecting 8 ins. above ground, with a brass cap mkd.
- (B) The W 1/16 sec. cor. of secs. 12 and 13, established by Rice, PLS No. 54633, in 2014, and is accepted as the cor., monumented with an iron rod, 5/8 in. diam., 30 ins. long, firmly set, projecting 4 ins. above ground, with an aluminum cap mkd.
- (C) The 1/4 sec. cor. of secs. 12 and 13, perpetuated by Rice, PLS No. 54633, in 2014, monumented with an iron post, 2 1/2 ins. diam., firmly set, projecting 6 ins. above ground, with a brass cap mkd.
- (D) The closing cor. of secs. 12 and 13, on the E. bdy. of the Tp., perpetuated by Ezell, Lane County Surveyor, in 1993, monumented with an iron post, 2 ins. diam., firmly set, projecting 3 ins. above ground, in a collar of stone, 3 ft. base, with a brass cap mkd.

S 11	S 12
S 14	S 13
T 19 S	R 9 W
1958	

W 1/16
S 12
S 13
2013
54633LS

S 12
1/4
S 13
T 19 S R 9 W
1958

T 19 S	T 19 S
S 12	S 7
S 13	
R 9 W	R 8 W
1957	



from which the remains of bearing trees mkd. by Tillman, et al, in 1957-58

A fir stump, 25 ins. diam., bears N. 9° E., 32.3 ft. dist., with a healed blaze.

A fir stump, 47 ins. diam., bears S. 57° E., 127.4 ft. dist., with illegible scribe marks visible on an open blaze.

A fir stump, 32 ins. diam., bears S. 30° W., 7.9 ft. dist., with no marks visible.

and the remains of the bearing trees mkd. by Ward

A hemlock, 18 ins. diam., bears N. 18 3/4° E., 29.6 ft. dist., with illegible scribe marks visible on a partially healed blaze.

A hemlock, 20 ins. diam., bears S. 35 1/4° E., 19.9 ft. dist with illegible scribe marks visible on a partially healed blaze.

A fir stump, 12 ins. diam., bears S. 43° W., 22.9 ft. dist., with a healed blaze.

A hemlock, 22 ins. diam., bears N. 26 1/4° W., 31.0 ft. dist., with illegible scribe marks visible on a partially healed blaze.

No suitable accessories available in sec. 14.

An aluminum fence post is alongside the cor.

from which the bearing trees mkd. by Rice

A fir, 9 ins. diam., bears S. 54 3/4° W., 11.3 ft. dist., with scribe marks W1/16 S13 BT visible on a partially healed blaze.

A fir, 11 ins. diam., bears N. 51 1/4° W., 17.6 ft. dist., with scribe marks W1/16 S12 BT visible on a partially healed blaze.

At the corner point

Set a stainless steel post, 28 ins. long, 2 1/2 ins. diam., 20 ins. in the ground, directly over the iron rod, with a brass cap mkd.

S 12
W 1/16
S 13
2015

An aluminum fence post is alongside the cor.

from which the remains of the bearing trees mkd. by Tillman, et al, in 1957-58

A fir, 36 ins. diam., bears S. 10 1/2° W., 25.7 ft. dist., with a healed blaze.

A fir stump, 24 ins. diam., bears N. 64° W., 14.5 ft. dist., with a healed blaze.

and a bearing tree mkd. by Rice

A fir, 8 ins. diam., bears N. 13 1/4° W., 26.3 ft. dist., with scribe marks 1/4 S12 BT visible on a partially healed blaze.

An aluminum fence post is alongside the cor.

Add the marks CC 2016 to the brass cap.

from which the remains of a bearing tree mkd. by Tillman, et al, in 1957-58

A hemlock snag, 28 ins. diam., bears S. 50 1/2° W., 80.6 ft. dist., with a healed blaze and a nail driven into the right side center. (Record, S. 49 1/2° W., 82.5 ft. dist.)

and the remains of a bearing tree mkd. by person(s) unknown reported by Tillman, et al

A fir stump, 39 ins. diam., bears N. 75° W., 9.2 ft. dist., with a healed blaze.

and the bearing trees mkd. by Ezell

A fir, 16 ins. diam., bears N. 30° E., 25.4 ft. dist., with a healed blaze.

A fir, 11 ins. diam., bears S. 87 1/2° E., 23.6 ft. dist., with a healed blaze.

and the remains of a bearing tree mkd. by person(s) unknown

A fir stump, 48 ins. diam., bears N. 55 1/4° E., 21.1 ft. dist., with a healed blaze.

and new bearing trees

An alder, 12 ins. diam., bears S. 51 1/2° W., 23.9 ft. dist., mkd. T19S R9W S13 CC BT in the bark.

A fir, 13 ins. diam., bears N. 6 1/4° W., 21.7 ft. dist., mkd. T19S R9W S12 CC BT.

A steel fence post is alongside the cor.

From this cor., N. 89° 34' 22" W.,

200 ft. dist., creek, 10 ft. wide, course N. 55° W.
270 ft. dist., creek, 10 ft. wide, course N. 40° E.

This plat constitutes the entire record of the dependent resurvey of a portion of the subdivisional lines, designed to restore the corners in their true original locations according to the best available evidence, Township 19 South, Range 9 West, Willamette Meridian, Oregon.

The history of official surveys pertaining to this survey is as follows:

In 1899, Henry L. Chandler, U.S. Deputy Surveyor, surveyed the subdivisional lines, as shown on the official plat of survey approved February 12, 1901.

In 1957-58, Thomas A. Tillman, Robert L. Holm, and Floyd A. Brooks, Cadastral Surveyors, dependently resurveyed the east boundary and a portion of the subdivisional lines, as shown on the official plat of survey accepted January 7, 1963.

The following local surveys filed in the Douglas County Surveyor's Office are referred to in the subsequent corner descriptions and are referenced by surveyor's last name, official title or Professional Land Surveyor (PLS) No., and year.

Date	Name and Registration Number	File Number
1993	Kenneth R. Ezell, Lane Co. Surveyor	CS65182-26
2002	Robert B. Ward Jr., PLS No. 1091	CS65/80-7
2014	Ronald L. Rice, PLS No. 54633	M167-43

The directions of the lines are based on the true meridian as determined by Global Positioning Systems (GPS) techniques and carried forward by sustained angulation using conventional survey techniques. All measurements along the lines were derived through the use of GPS and conventional survey techniques. Measured distances and directions have been adjusted by computer software that incorporates a least squares adjustment routine. The adjusted mean bearings and mean horizontal ground elevation distances are reported to the nearest second and 0.01 foot.

Preliminary to the resurvey, the lines of the official original surveys and resurveys were retraced and a search was made for all corners, lines, other calls of record, and where available, collateral evidence of local surveys and corners. The retracement data was thoroughly verified and only the true line field data are given hereon.

A magnet in a white plastic case was deposited at the base of each stainless steel post, and each new bearing tree has a 2 1/2 inch x 1/4 inch magnetic nail (Mag Nail) driven at the base on right side center, unless otherwise noted in the corner description. Only those lines bounding Federal interest land were blazed.

The geographic position shown hereon was determined by ties to temporary GPS control points utilizing dual frequency, carrier phase GPS receivers, and processed using the National Geodetic Survey's Online Positioning User Service (OPUS).

The survey was executed in accordance with the specifications set forth in the Manual of Surveying Instructions (2009), and the special instructions approved August 17, 2015, for Group No. 2799, Oregon, by Joseph M. Mannix, Cadastral Surveyor, beginning August 19, 2015, and completed August 31, 2015. He was assisted by Daniel B. Bliss and Luke A. Chapman, Surveying Technicians.

UNITED STATES DEPARTMENT OF THE INTERIOR
BUREAU OF LAND MANAGEMENT

Portland, Oregon

The survey represented by this plat, having been correctly executed in accordance with the requirements of law and the regulations of this Bureau, is hereby accepted.

For the Director

Mary J. M. Hart

Chief Cadastral Surveyor of Oregon

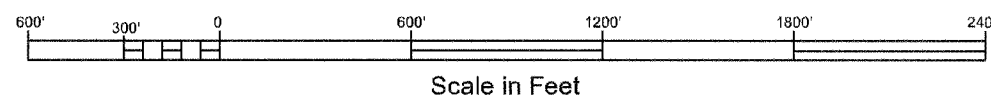
February 9, 2017

Date

I, Joseph M. Mannix, Cadastral Surveyor, HEREBY CERTIFY upon honor, that in pursuance of special instructions bearing the approval date of the 17th day of August, 2015, and the assignment instructions bearing the date of the 17th day of August, 2015, I have dependently resurveyed a portion of the subdivisional lines, Township 19 South, Range 9 West, Willamette Meridian, Oregon, which is represented upon this plat as having been executed by me and under my direction; and that said survey has been made in strict conformity with said special instructions, the Manual of Surveying Instructions, and in the specific manner described on this plat.

Joseph M. Mannix
Cadastral Surveyor

FEB 6, 2017
Date



OFFICIALLY FILED: 6/28/2017