

Date: 12/29/2014 By: JC
This survey consists of:
Map: T19S R9W 2014-1
Narrative: VOL. 58 PAGE
Corner Rpt: 23069

TOWNSHIP 19 SOUTH, RANGE 9 WEST, OF THE WILLAMETTE MERIDIAN, OREGON

RETRACEMENT

DOUGLAS COUNTY
SURVEYOR

This plat constitutes the entire record of the retracement of a portion of the subdivisional lines, Township 19 South, Range 9 West, Willamette Meridian, Oregon.

A history of official surveys pertaining to this retracement is as follows:

In 1899, Henry L. Chandler, U.S. Deputy Surveyor, surveyed the subdivisional lines, as shown on the official plat of survey approved February 12, 1901.

In 1957-58, Thomas A. Tillman, Robert L. Holm, and Floyd A. Brooks, Cadastral Surveyors, dependently resurveyed a portion of the subdivisional lines, as shown on the official plat of survey accepted January 7, 1963.

In 1989-90, Rick A. McMullen, Cadastral Surveyor, correctly resurveyed a portion of the subdivisional lines and subdivided section 2, as shown on the official plat of survey accepted February 22, 1993.

The direction of the line is based on the true meridian as determined by Global Positioning Systems (GPS) techniques and carried forward by sustained angulation using conventional survey techniques. All measurements along the lines were derived through the use of conventional survey techniques. Measured distances and directions have been adjusted by computer software that incorporates a least squares adjustment routine. The adjusted mean bearing and mean horizontal ground elevation distance is reported to the nearest second and 0.01 foot.

The line of the official original survey and resurveys were retraced and search was made for all corners, lines, other calls of record, and, where available, collateral evidence of local surveys and corners. Identified corners were perpetuated in their original positions. The retracement data were thoroughly verified and only the true line field data are given hereon.

Each new bearing tree has a 2 1/2 inch x 1/4 inch magnetic nail (Mag Nail) driven at the base on right side center, unless otherwise noted in the corner description. Only those lines bounding Federal interest land were blazed.

The geodetic position shown hereon was determined by a tie from a temporary GPS control point utilizing dual frequency, carrier phase GPS receivers, and processed using the National Geodetic Online Positioning User Service (OPUS).

The survey was executed in accordance with the specification set forth in the Manual of Surveying Instructions (2009), and the special instructions approved April 28, 2010, for Group No. 2500, Administrative File No. 1304, Oregon, by Kenneth W. Saveland, Cadastral Surveyor, beginning January 23, 2013, and completed March 5, 2013. He was assisted by Edith M. Forkner, Cadastral Surveyor, and Keith G. Felker, Survey Technician.

- (A) The 1/4 sec. cor. of secs. 10 and 11, monumented with an iron post, 2 1/2 ins. diam., firmly set, projecting 5 ins. above ground, with a brass cap mkd.

1/4
S 10 | S 11
T 19 S R 9 W
1958

from which the bearing trees mkd. by Tillman, Holm, and Brooks in 1957-58

A fir, 48 ins. diam., bears N. 66° E., 4.6 ft. dist., with a healed blaze.

A fir, 45 ins. diam., bears S. 46 1/2° W., 60.1 ft. dist., with a healed blaze.

- (B) The cor. of secs. 2, 3, 10, and 11, perpetuated by Stuntzner, PLS No. 1342, in 1978, filed in the Lane County Surveyor's Office under File No. CS 22214; monumented with an iron post, 2 1/2 ins. diam., firmly set, projecting 6 ins. above ground, with a brass cap mkd.

T 19 S R 9 W
S 3 | S 2
S 10 | S 11
1957

from which the remains of the bearing trees mkd. by Tillman, Holm, and Brooks in 1957-58

A decayed fir snag, 32 ins. diam., bears N. 17° E., 38.3 ft. dist., with illegible scribe marks visible on a partially healed blaze.

A decayed fir stump, 40 ins. diam., bears S. 57° E., 28.7 ft. dist., with a healed blaze.

A decayed fir stump, 19 ins. diam., bears S. 39° W., 53.5 ft. dist., with scribe marks T19S R9W S10 BT visible on open blaze.

and the remains of a bearing tree mkd. by Stuntzner (Record, person(s) unknown)

A roothole, bears N. 74 3/4° W., 44.2 ft. dist., downhill of which is an uprooted fir snag, 46 ins. diam., with scribe marks 3 SE S visible on open blaze.

and the bearing trees mkd. by McMullen in 1989-90

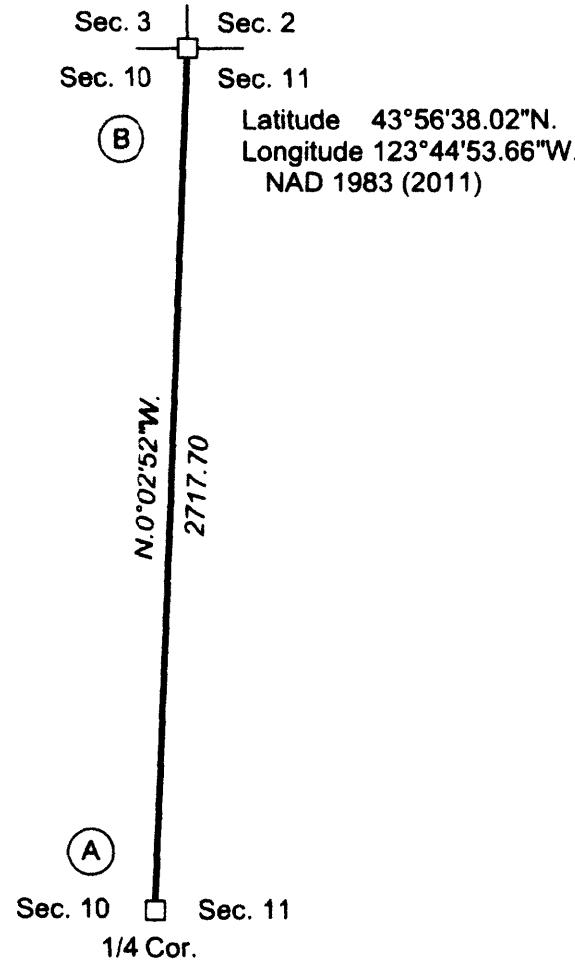
A fir, 47 ins. diam., bears N. 77° E., 38.9 ft. dist., with a healed blaze.

A fir, 40 ins. diam., bears N. 72° W., 103.3 ft. dist., with a healed blaze.

and new bearing trees

A fir, 9 ins. diam., bears S. 18° E., 6.7 ft. dist., mkd. T19S R9W S11 BT.

A fir, 9 ins. diam., bears S. 80 1/2° W., 54.4 ft. dist., mkd. T19S R9W S10 BT.



I, Kenneth W. Saveland, Cadastral Surveyor, HEREBY CERTIFY upon honor, that in pursuance of special instructions bearing the approval date of the 28th day of April, 2010, and the assignment instructions bearing the date of the 18th day of January, 2013, I have retraced a portion of the subdivisional lines, Township 19 South, Range 9 West, Willamette Meridian, Oregon, which is represented upon this plat as having been executed by me and under my direction; and that said survey has been made in strict conformity with said special instructions, the Manual of Surveying Instructions, and in the specific manner described on this plat.

Kenneth W. Saveland
Cadastral Surveyor

SEPTEMBER 9, 2014
Date

LEGEND
 Corner previously established or reestablished

UNITED STATES DEPARTMENT OF THE INTERIOR
BUREAU OF LAND MANAGEMENT

Portland, Oregon

The survey represented by this plat, having been correctly executed in accordance with the requirements of law and the regulations of this Bureau, is hereby accepted.

For the Director
Mary J. M. Hartzel
Chief Cadastral Surveyor of Oregon

SEPTEMBER 11, 2014
Date



OFFICIALLY FILED: 12/19/2014