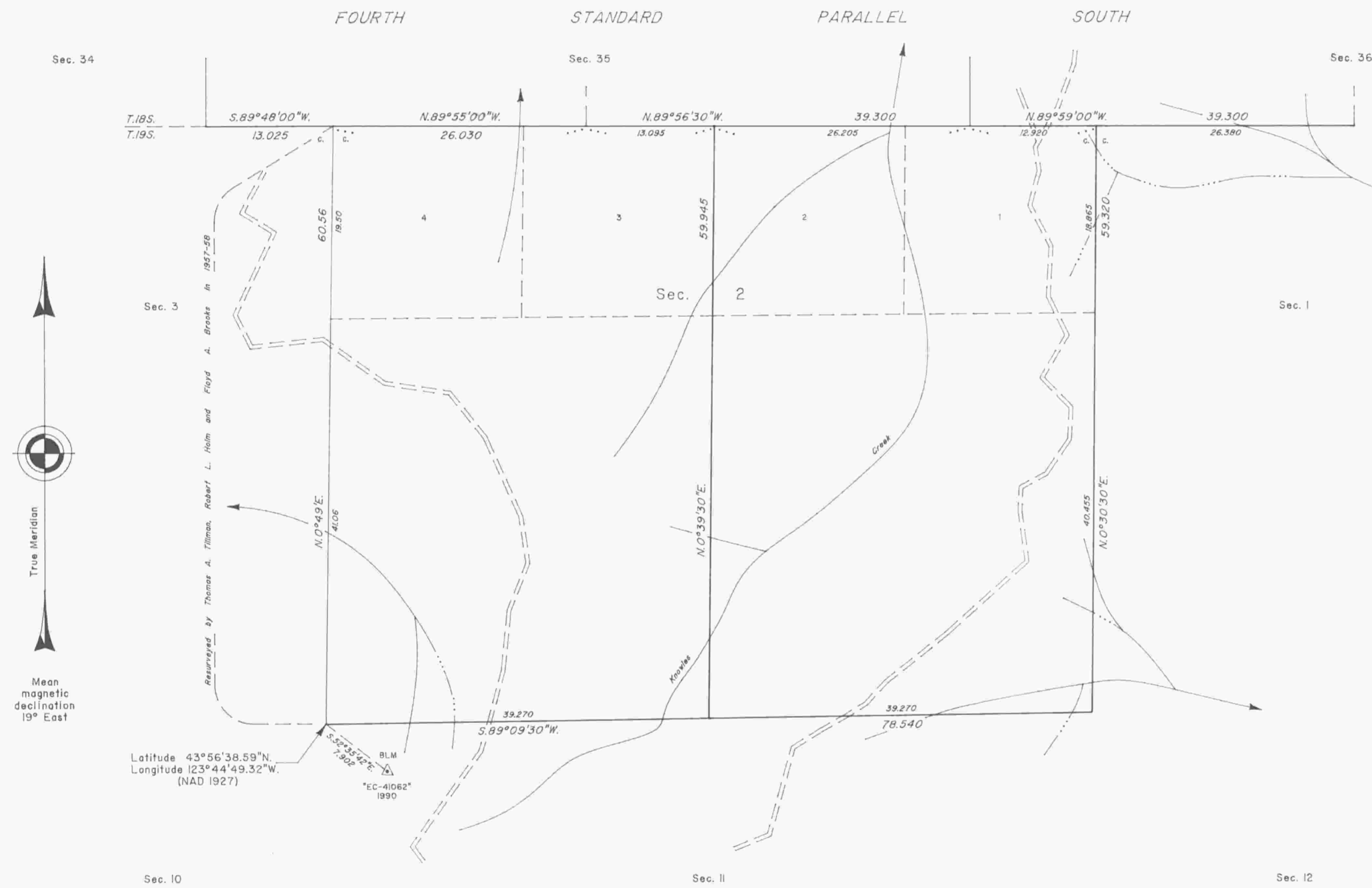


TOWNSHIP 19 SOUTH, RANGE 9 WEST, OF THE WILLAMETTE MERIDIAN, OREGON

CORRECTIVE DEPENDENT RESURVEY, DEPENDENT RESURVEY AND SUBDIVISION OF SECTION 2



A history of surveys is contained in the field notes.

This plat represents a corrective dependent resurvey and dependent resurvey of a portion of the south boundary (Fourth Standard Parallel South), township 18 south, range 9 west, and the corrective dependent resurvey of a portion of the subdivisional lines, T. 19 S., R. 9 W., Willamette Meridian, Oregon, designed to restore the corners in their true original locations according to the best available evidence, and the subdivision of section 2.

The lottings and areas are as shown on the plat approved February 12, 1901.

The survey was executed by Rick A. McMullen, Cadastral Surveyor, beginning September 21, 1989, and completed June 25, 1990, pursuant to Special Instructions dated September 18, 1989, and Supplemental Special Instructions dated February 9, 1990, under Group Number 1512, Oregon.

Timber in this area consists of Douglas fir, hemlock, cedar, alder and maple.

UNITED STATES DEPARTMENT OF THE INTERIOR
BUREAU OF LAND MANAGEMENT

Portland, Oregon February 22, 1993

This plat is strictly conformable to the approved field notes, and the survey, having been correctly executed in accordance with the requirements of law and the regulations of this Bureau, is hereby accepted.

For the Director

Wayne M. Gardner

Chief Cadastral Surveyor of Oregon

