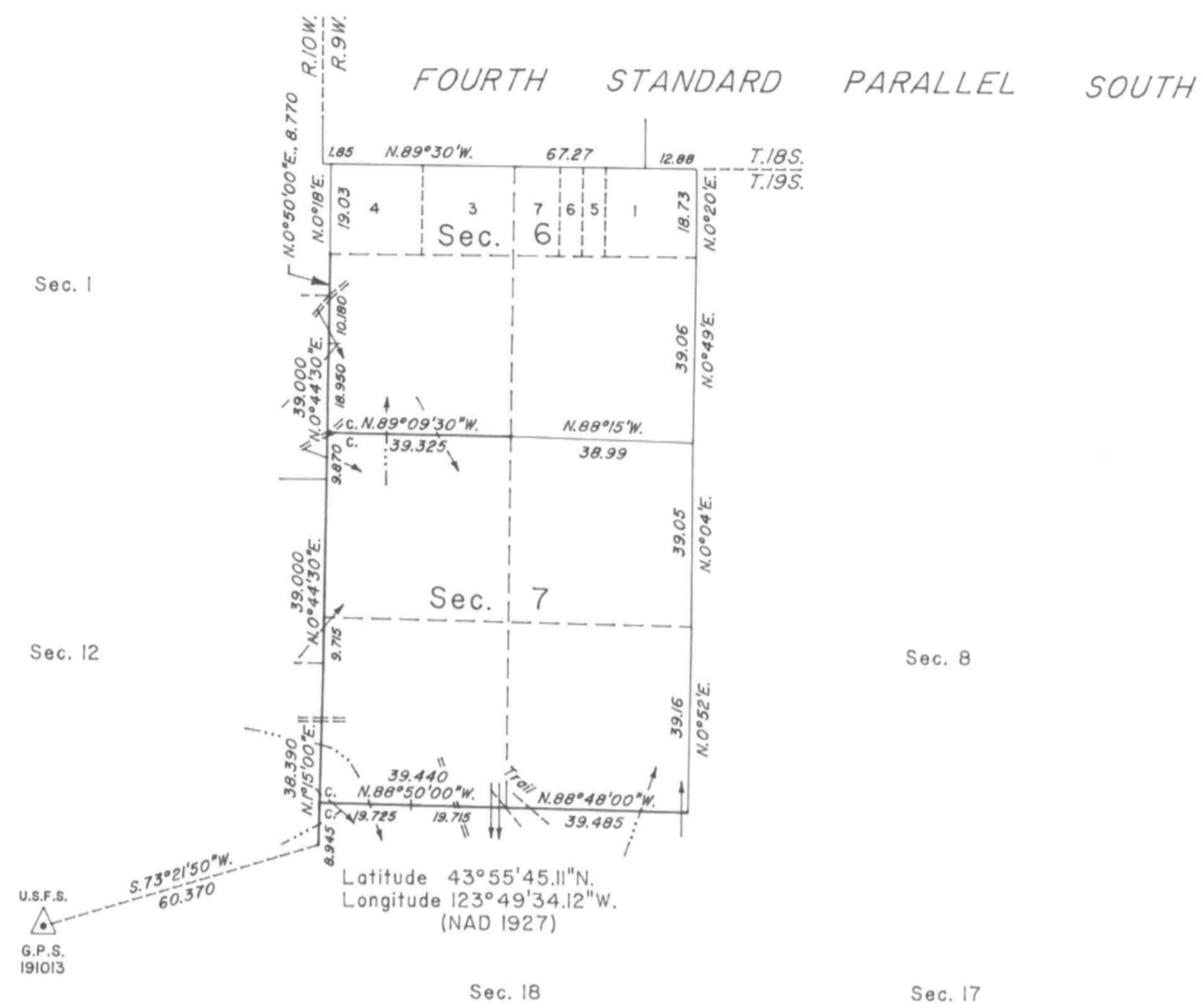


TOWNSHIP 19 SOUTH, RANGE 9 WEST, OF THE WILLAMETTE MERIDIAN, OREGON  
 CORRECTIVE DEPENDENT RESURVEY AND DEPENDENT RESURVEY



Mean magnetic declination 18 1/2° East



A history of surveys is contained in the field notes.

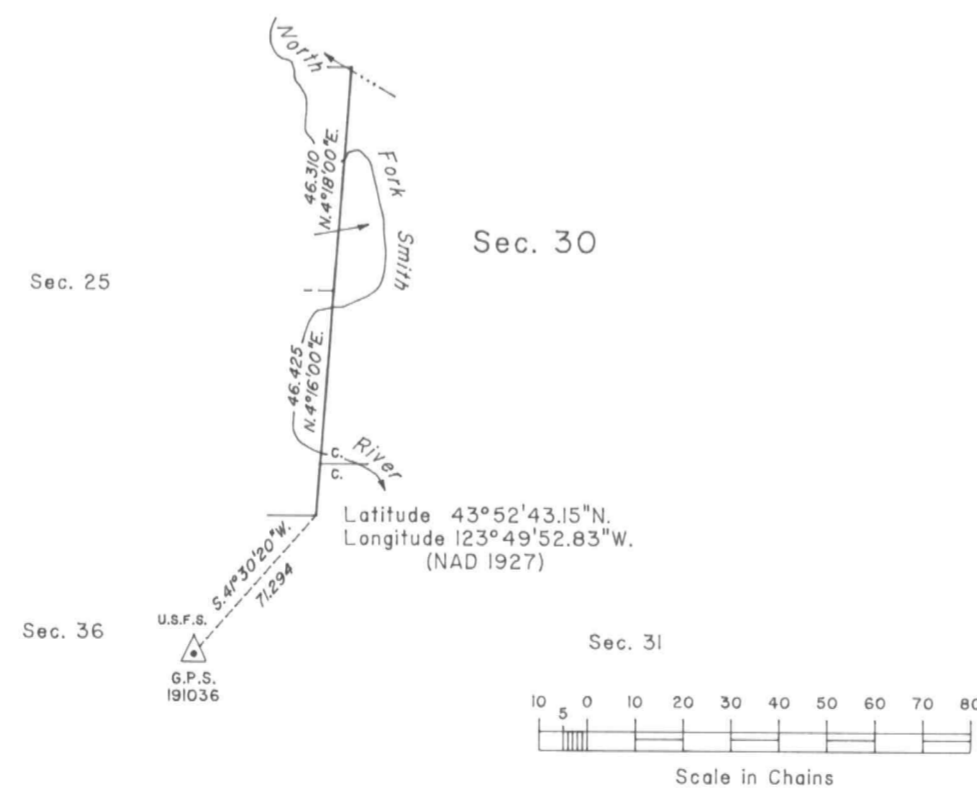
This plat represents a corrective dependent resurvey of a portion of the east boundary of T. 19 S., R. 10 W., and a dependent resurvey of a portion of the subdivisional lines, T. 19 S., R. 9 W., Willamette Meridian, Oregon, designed to restore the corners in their true original locations according to the best available evidence.

The lottings and areas are as shown on the plats approved February 12, 1901 and September 13, 1919, and the plat accepted January 7, 1963.

The survey was executed by Robert W. Dahl, Cadastral Surveyor, beginning August 15, 1988, and completed May 23, 1991, pursuant to Special Instructions dated June 23, 1988, Supplemental Special Instructions dated September 25, 1989, and Second Supplemental Special Instructions dated April 12, 1991, under Group Number 1450, Oregon.

Timber in this area consists of Douglas fir, hemlock, maple, alder, cedar, spruce, cherry and chittum.

Lightweight lines were resurveyed by Thomas A. Tillman, Robert L. Holm and Floyd A. Brooks in 1957-58.



UNITED STATES DEPARTMENT OF THE INTERIOR  
 BUREAU OF LAND MANAGEMENT

Portland, Oregon June 3, 1992

This plat is strictly conformable to the approved field notes, and the survey, having been correctly executed in accordance with the requirements of law and the regulations of this Bureau, is hereby accepted.

For the Director

*Wayne M. Gardner*  
 Chief Cadastral Surveyor of Oregon