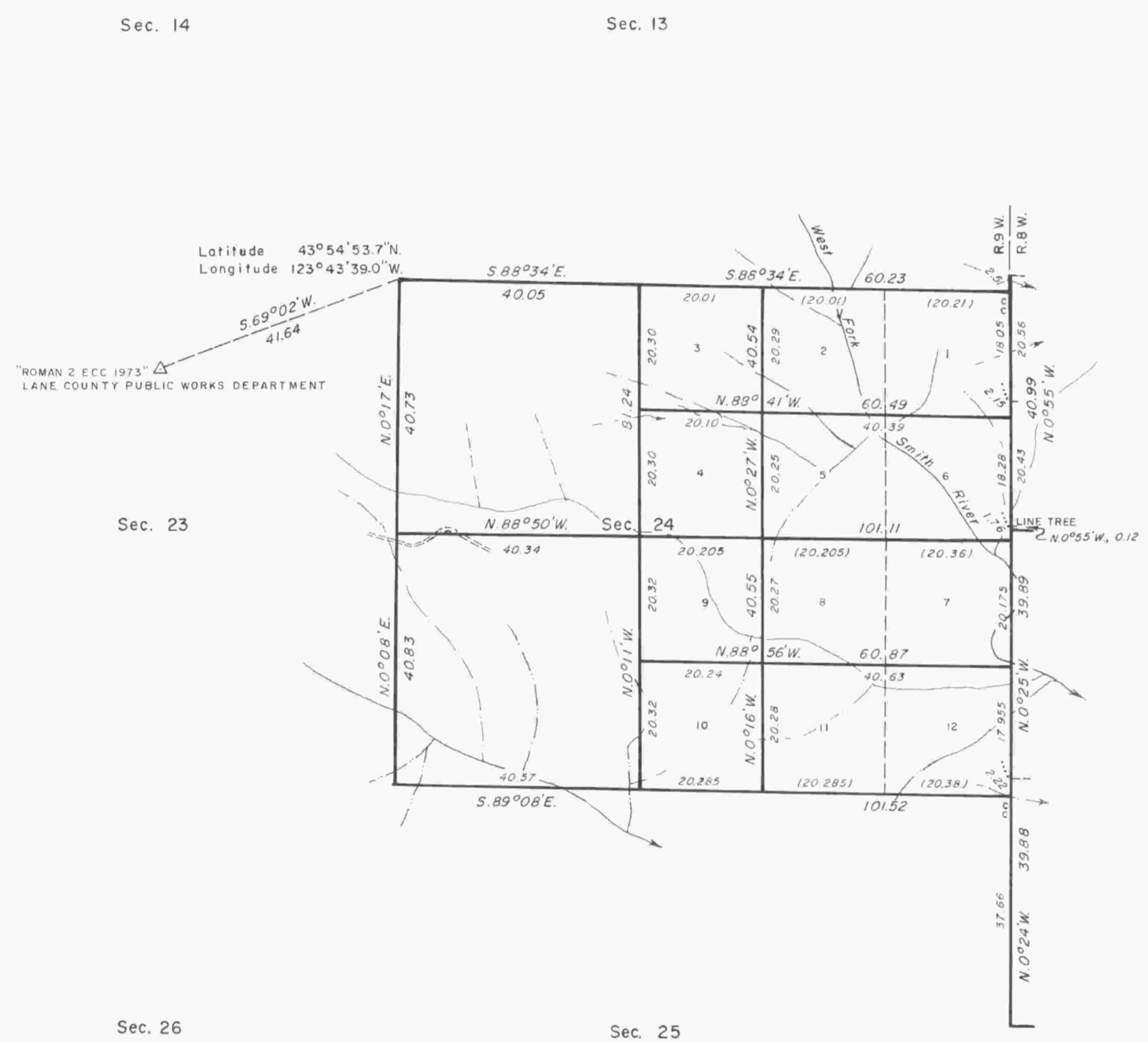


TOWNSHIP 19 SOUTH, RANGE 9 WEST, OF THE WILLAMETTE MERIDIAN, OREGON.

CORRECTIVE DEPENDENT RESURVEY, DEPENDENT RESURVEY, AND SUBDIVISION OF SECTION 24



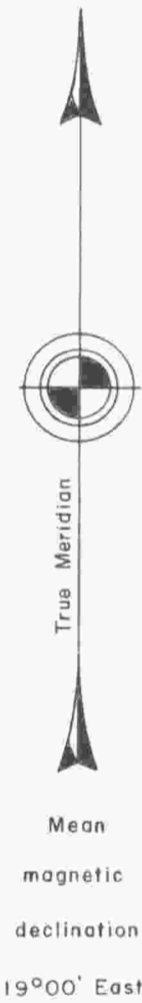
A history of surveys is contained in the field notes.

This plat represents a corrective dependent resurvey of a portion of the west boundary and dependent resurvey of a portion of the west boundary, T. 19 S., R. 8 W., and the corrective dependent resurvey of a portion of the subdivisional lines, and the dependent resurvey of a portion of the subdivisional lines, T. 19 S., R. 9 W., Willamette Meridian, Oregon, designed to restore the corners in their true original locations according to the best available evidence, and the subdivision of section 24.

The lottings and areas are as shown on the plats approved February 12, 1901, and accepted November 16, 1977.

The survey was executed by John P. Farnsworth, Cadastral Surveyor, beginning September 14, 1981, and completed April 4, 1983, pursuant to Special Instructions dated August 6, 1981, and Supplemental Special Instructions dated March 25, 1983, for Group No. 1076, Oregon.

Timber in this area consists of fir, cedar, hemlock, alder, maple, chinquapin, yew, and dogwood.



UNITED STATES DEPARTMENT OF THE INTERIOR
BUREAU OF LAND MANAGEMENT
Portland, Oregon August 24, 1984

This plat is strictly conformable to the approved field notes, and the survey, having been correctly executed in accordance with the requirements of law and the regulations of this Bureau, is hereby accepted.

For the Director

William W. Glenn

Chief Cadastral Surveyor of Oregon

