

TOWNSHIP 19 SOUTH, RANGE 9 WEST, OF THE WILLAMETTE MERIDIAN, OREGON.

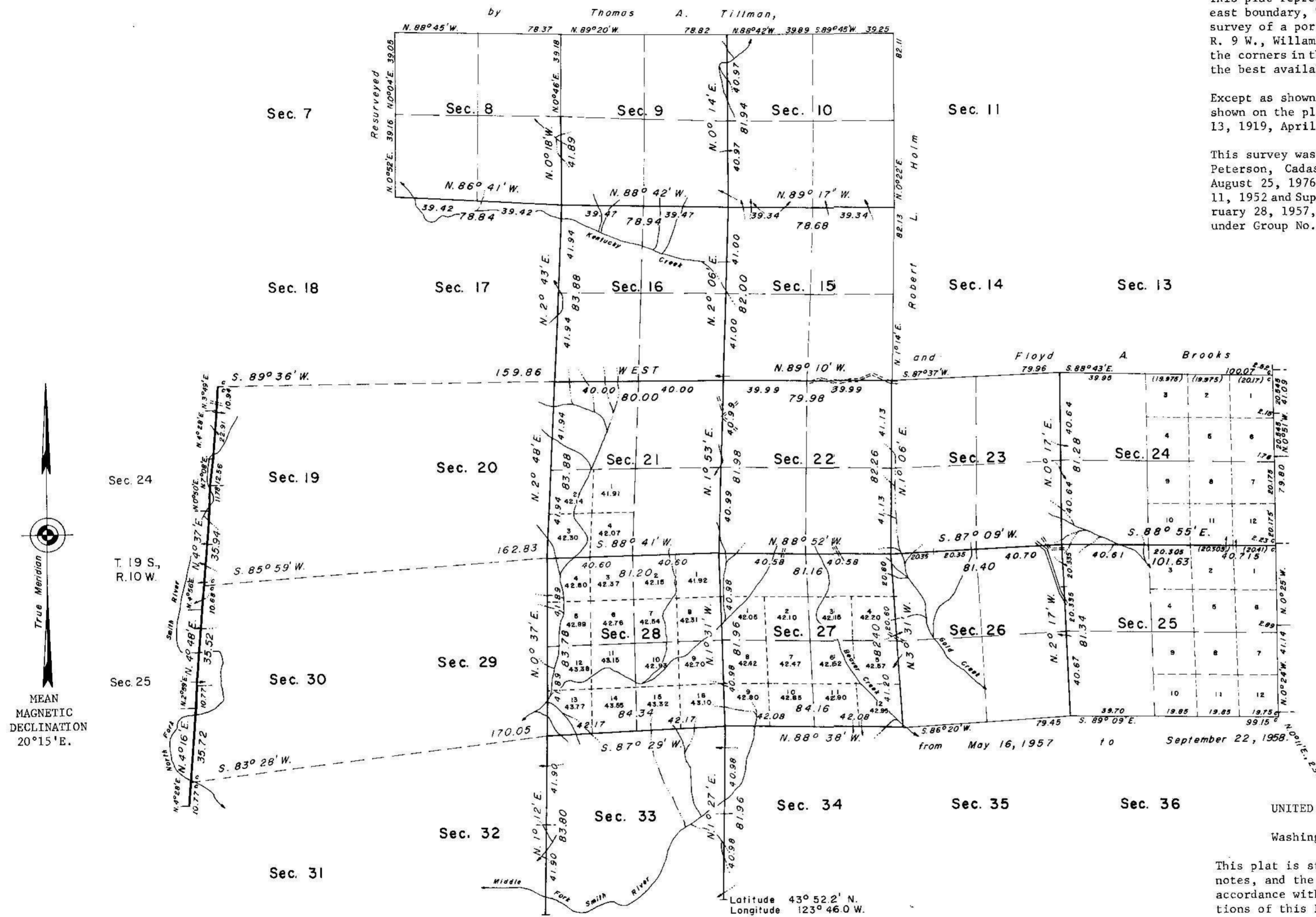
RETRACEMENT AND DEPENDENT RESURVEY

A history of surveys is contained in the field notes.

This plat represents the retracement of a portion of the east boundary, T. 19 S., R. 10 W., and the dependent resurvey of a portion of the subdivisional lines, T. 19 S., R. 9 W., Willamette Meridian, Oregon, designed to restore the corners in their true original locations according to the best available evidence.

Except as shown hereon, the lottings and areas are as shown on the plats accepted February 12, 1901, September 13, 1919, April 16, 1930, and January 7, 1963.

This survey was executed by Donald R. Beck and Peter A. Peterson, Cadastral Surveyors, from April 22, 1968 to August 25, 1976, under Special Instructions dated August 11, 1952 and Supplemental Special Instructions dated February 28, 1957, which provide for the surveys included under Group No. 307, Oregon.



UNITED STATES DEPARTMENT OF THE INTERIOR
BUREAU OF LAND MANAGEMENT
Washington, D.C. November 16, 1977

This plat is strictly conformable to the approved field notes, and the survey, having been correctly executed in accordance with the requirements of law and the regulations of this Bureau, is hereby accepted.

For the Director

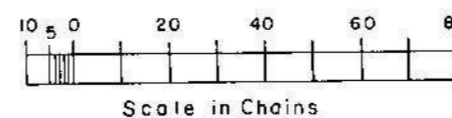
Bernard W. Foster

Chief, Division of Cadastral Survey

"SUSPENDED, MAR. 25, 1983, SEE FILE 9622.1 (942)"

SUSPENSION LIFTED AUG. 24, 1984, FILE 9622.1 (OR 942) REFER TO PLAT ACCEPTED AUG. 24, 1984

SUSPENDED APRIL 9, 1991 see file 9632 (OR 942)



Timber in this area consists of fir, hemlock, cedar, maple, madrone, chinquapin, yew, and cascara.