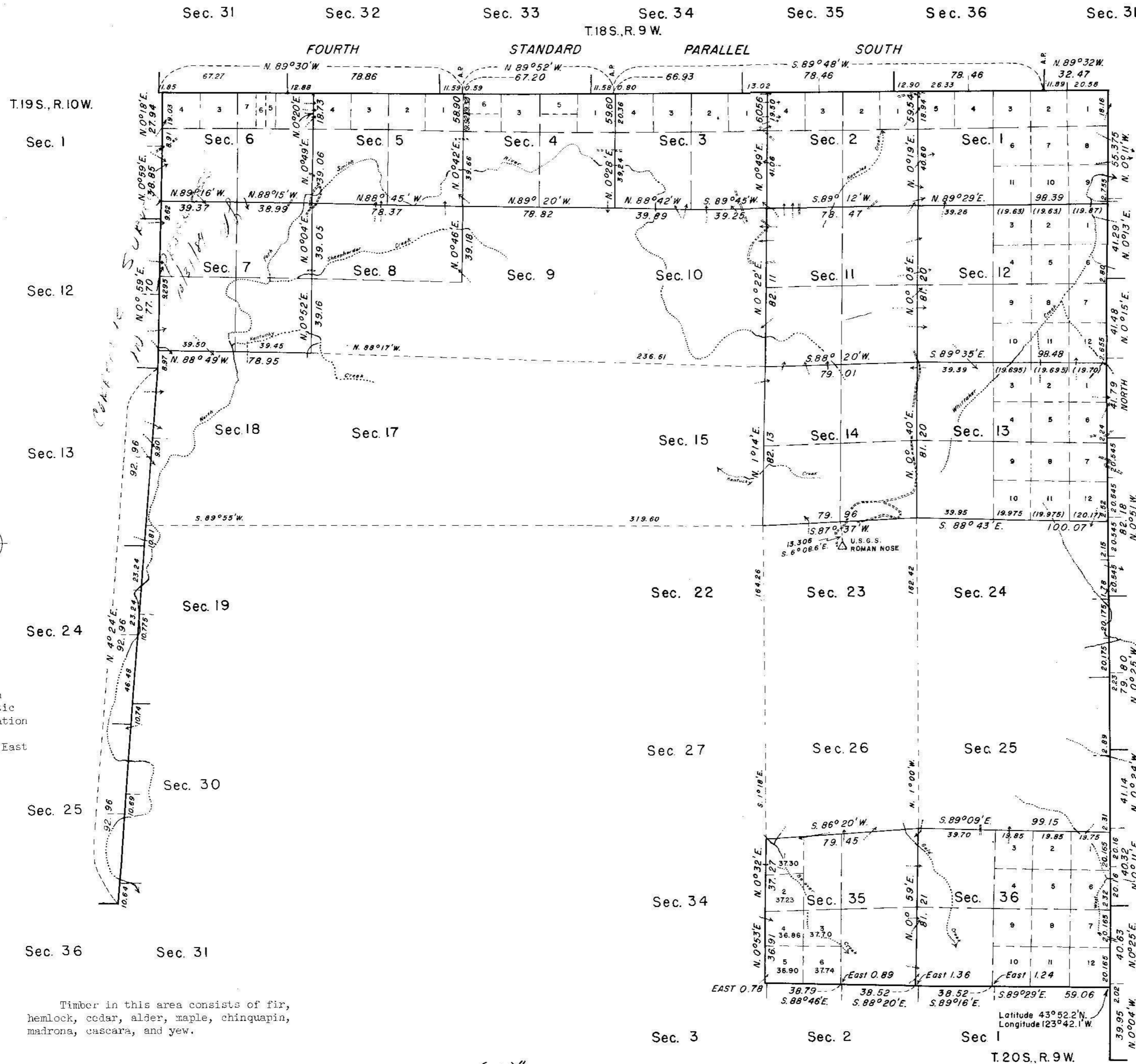


TOWNSHIP 19 SOUTH, RANGE 9 WEST, OF THE WILLAMETTE MERIDIAN, OREGON.

DEPENDENT RESURVEY



T. 18 S., R. 8 W.

T. 19 S., R. 8 W.

This plat represents a retracement and reestablishment of a portion of the east and west boundaries and a portion of the subdivisional lines of T. 19 S., R. 9 W., Willamette Meridian, Oregon, designed to restore the corners in their true original location according to the best available evidence; and, excepting as new or modified vacant subdivisions are shown hereon, the lottings and areas are as shown on the plats approved February 12, 1901, September 13, 1919 and April 7, 1930.

The north boundary was surveyed by H. Gordon and C.P. Gardener in 1855 and was resurveyed by Henry L. Chandler in 1899 and N.D. Price in 1929.

The south boundary was surveyed in part by William Thiel in 1891, surveyed and resurveyed in part by Henry L. Chandler in 1899, and resurveyed in part by Fred Mensch in 1921 - 1922, and by Thomas A. Tillman and Joseph S. Gawron in 1953.

The east boundary was surveyed by Charles M. Collier in 1891, and resurveyed in part by Thomas A. Tillman and Joseph S. Gawron in 1953.

The west boundary and subdivisional lines were surveyed by Henry L. Chandler in 1899.

Dependent resurvey of a portion of the east and west boundaries and a portion of the subdivisional lines of T. 19 S., R. 9 W., Willamette Meridian, Oregon, executed by Thomas A. Tillman, Robert L. Holm, and Floyd A. Brooks, May 16, 1957, to September 22, 1958, under Special Instructions dated August 11, 1952, and Supplemental Special Instructions dated February 28, 1957, which provide for the surveys included under Group No. 307, Oregon.

UNITED STATES DEPARTMENT OF THE INTERIOR
BUREAU OF LAND MANAGEMENT
Washington, D.C. January 7, 1963

This plat is strictly conformable to the approved field notes, and the survey, having been correctly executed in accordance with the requirements of law and the regulations of this Bureau, is hereby accepted.

For the Director

E. J. Remington
Chief, Division of Engineering

Mean magnetic declination
20° 12' East

Timber in this area consists of fir, hemlock, cedar, alder, maple, chinquapin, madrona, cascara, and yew.

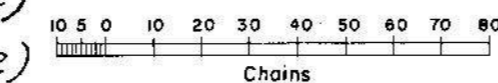
"SUSPENDED, MARCH 25, 1983, SEE FILE 9622.1 (942)"

SUSPENSION LIFTED AUG. 24, 1984 FILE 9622.1 942)

REFER TO PLAT ACCEPTED AUG. 24, 1984

SUSPENDED, SEPT. 18, 1989 (SEE FILE 9632 (OR 942))

SUSPENSION LIFTED DEC. 28, 1992 FILE 9632 (OR 942) REFER TO PLAT ACCEPTED JUNE 3, 1992

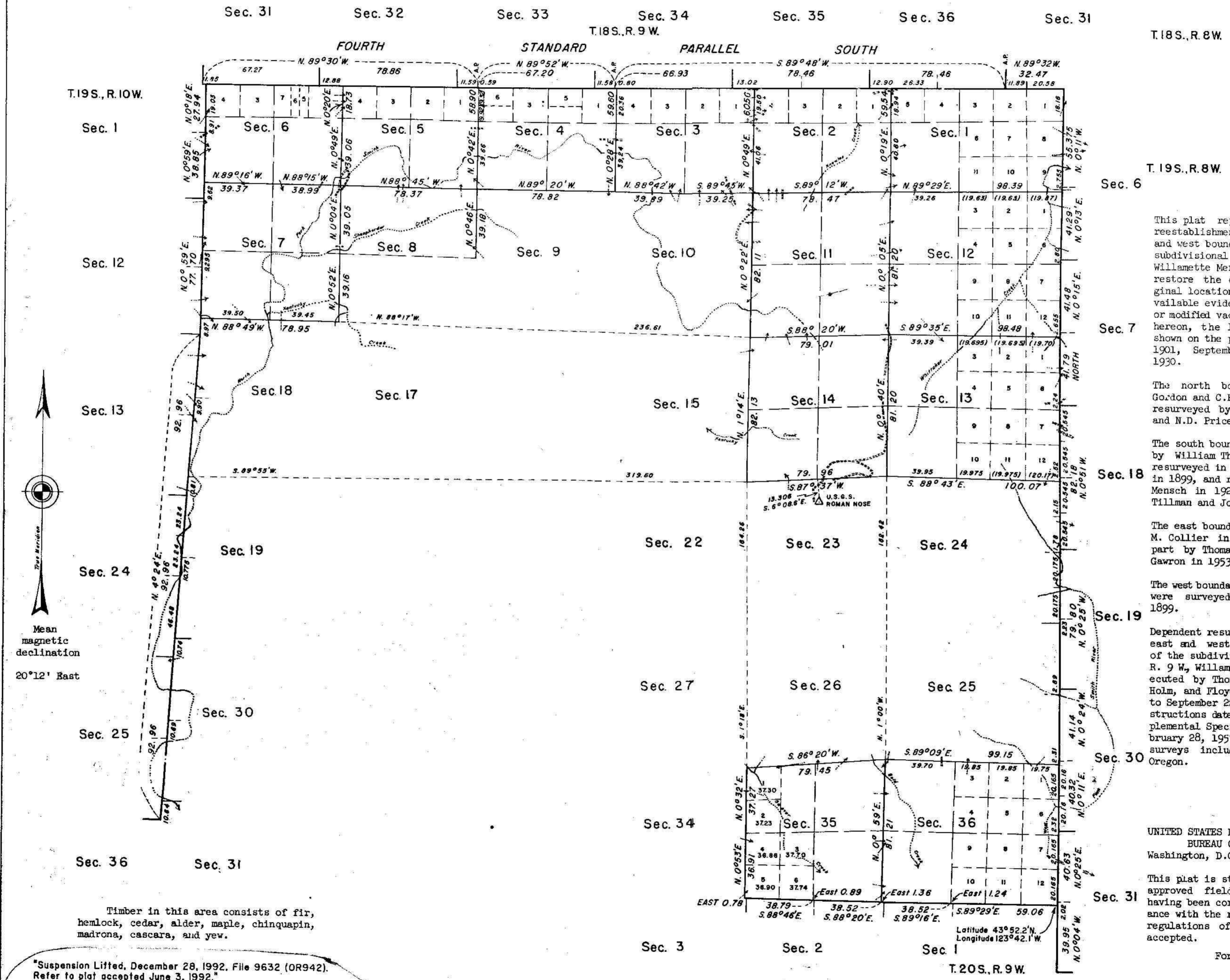


Area resurveyed: 7902.93 Acres

T. 20 S., R. 9 W.

TOWNSHIP 19 SOUTH, RANGE 9 WEST, OF THE WILLAMETTE MERIDIAN, OREGON.

DEPENDENT RESURVEY



Mean magnetic declination
20°12' East

Timber in this area consists of fir, hemlock, cedar, alder, maple, chinquapin, madrona, cascara, and yew.

Suspension Lifted, December 28, 1992. File 9632 (OR942). Refer to plat accepted June 3, 1992.

Suspension Lifted August 24, 1984, File 9622.1 (OR942). Refer to plat accepted August 24, 1984.

SUSPENDED, March 25, 1983, see File 9622.1 (942)
Suspended September 18, 1989 (see File 9632 (OR 942)).

Area resurveyed: 7902.93 Acres

This plat represents a retracement and reestablishment of a portion of the east and west boundaries and a portion of the subdivisional lines of T. 19 S., R. 9 W., Willamette Meridian, Oregon, designed to restore the corners in their true original location according to the best available evidence; and, excepting as new or modified vacant subdivisions are shown hereon, the lottings and areas are as shown on the plats approved February 12, 1901, September 13, 1919 and April 7, 1930.

The north boundary was surveyed by H. Gordon and C.P. Gardener in 1855 and was resurveyed by Henry L. Chandler in 1899 and N.D. Price in 1929.

The south boundary was surveyed in part by William Thiel in 1891, surveyed and resurveyed in part by Henry L. Chandler in 1899, and resurveyed in part by Fred Mensch in 1921 - 1922, and by Thomas A. Tillman and Joseph S. Gawron in 1953.

The east boundary was surveyed by Charles M. Collier in 1891, and resurveyed in part by Thomas A. Tillman and Joseph S. Gawron in 1953.

The west boundary and subdivisional lines were surveyed by Henry L. Chandler in 1899.

Dependent resurvey of a portion of the east and west boundaries and a portion of the subdivisional lines of T. 19 S., R. 9 W., Willamette Meridian, Oregon, executed by Thomas A. Tillman, Robert L. Holm, and Floyd A. Brooks, May 16, 1957, to September 22, 1958, under Special Instructions dated August 11, 1952, and Supplemental Special Instructions dated February 28, 1957, which provide for the surveys included under Group No. 307, Oregon.

UNITED STATES DEPARTMENT OF THE INTERIOR
BUREAU OF LAND MANAGEMENT
Washington, D.C. January 7, 1963

This plat is strictly conformable to the approved field notes, and the survey, having been correctly executed in accordance with the requirements of law and the regulations of this Bureau, is hereby accepted.

For the Director

[Signature]
Chief, Division of Engineering