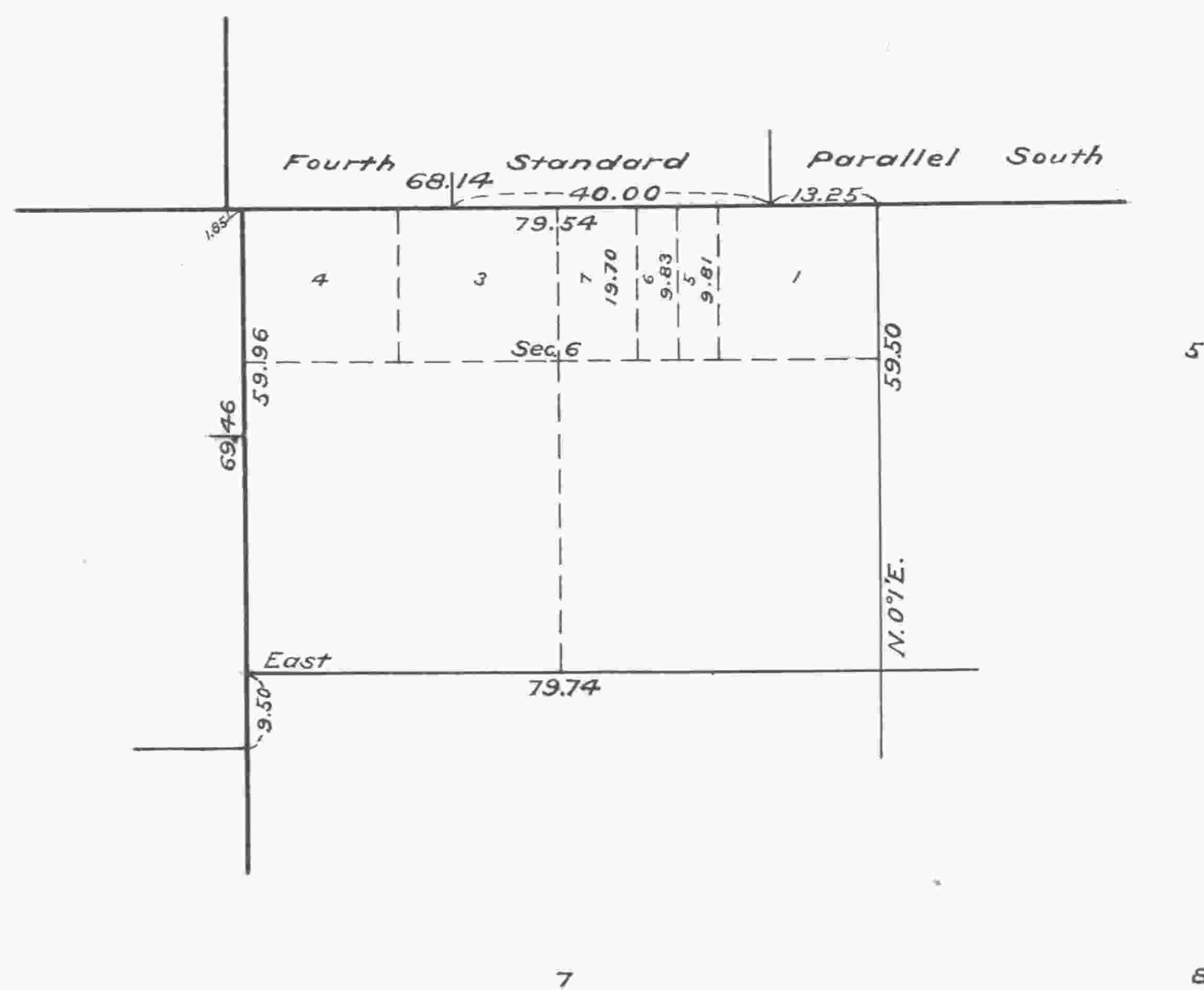


Supplemental Plat
of
Section 6 - Township N^o 19 South Range N^o 9 West of the Willamette Meridian, Oregon.
(Superseding plat of said section approved Feb. 12, 1901)
Scale 20 chains to an inch.

36

31

32



-12

OFFICE OF U. S. SURVEYOR GENERAL,
Portland, Oregon, Sept. 13th, 1919.

This supplemental plat, showing the areas and legal designations, of old lot 2, Section 6, T. 19 S., R. 9 W., Willamette Meridian, Ore. is made for the purpose of accommodating homestead entry Roseburg 09870 of Henry Meldrum, embracing in part all of lot 2, except the E $\frac{1}{2}$ E $\frac{1}{2}$; prepared in compliance with instructions from the Hon. Ass't. Commissioner of the General Land Office contained in letter "E" dated September 5, 1919.

Edward Worth
U. S. Surveyor General of Oregon.

ACCEPTED BY THE HON. COMMISSIONER G. L. O. October 17, 1919