

FILED

Date: 10/14/2021 By: JC

This survey consists of:

Map: T19-8 2021-1

Notes: VOL 59

: PGS 23800-23823

# TOWNSHIP 19 SOUTH, RANGE 8 WEST, OF THE WILLAMETTE MERIDIAN, OREGON

## DEPENDENT RESURVEY AND SUBDIVISION OF SECTION 11

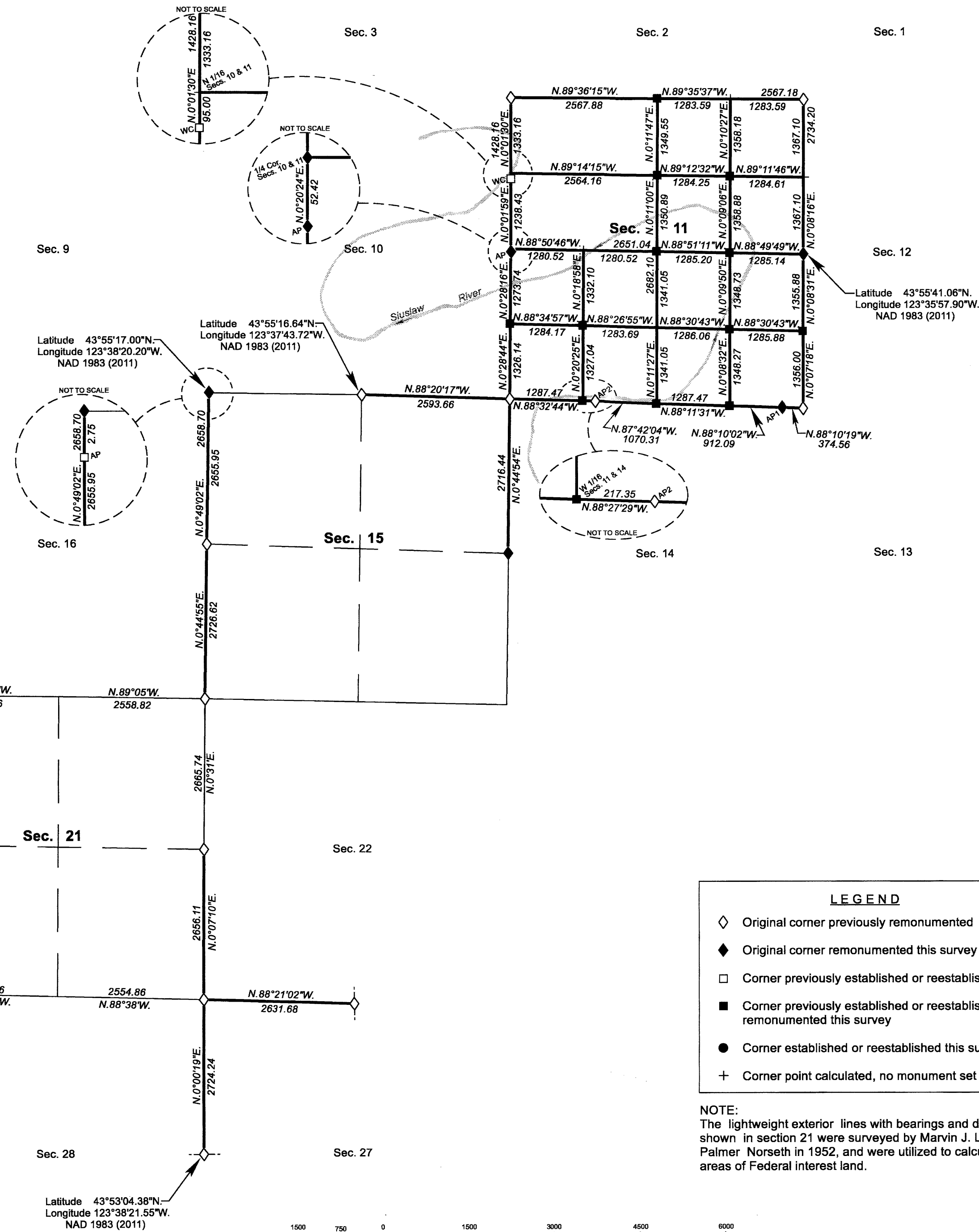
DOUGLAS COUNTY SURVEYOR

A history of surveys, corner descriptions, and other relevant information are contained in the field notes.

This plat represents the dependent resurvey of a portion of the subdivisional lines, designed to restore the corners in their true original locations according to the best available evidence, and the subdivision of section 11, Township 19 South, Range 8 West, Willamette Meridian, Oregon.

Official areas based on the measurements of this survey have been returned for Federal interest land where indicated. Aliquot part legal subdivisions retain their aliquot characteristics and refer to precisely the same land as that which was previously identified by its original survey or description. A lot can only be subdivided by survey or supplemental plat. Except as indicated hereon, the lottings and areas are as shown on the plat approved April 4, 1892 and accepted February 14, 1893.

Survey executed by Joseph M. Mannix, Cadastral Surveyor, beginning July 26, 2016, and completed November 16, 2016, pursuant to special instructions approved June 27, 2016, for Group No. 2846, Oregon.



LEGAL SUBDIVISION	OFFICIAL ACRES
SECTION 11	
NE1/4 NE1/4	40.17
NW1/4 NE1/4	39.90
SE1/4 NE1/4	40.20
NE1/4 NW1/4	39.63
NW1/4 NW1/4	39.39
SW1/4 SW1/4	39.15
SE1/4 SE1/4	39.91
SECTION 21	
NE1/4 NE1/4	39.02
NW1/4 NE1/4	38.98
SW1/4 NE1/4	38.93
SE1/4 NE1/4	38.97
NE1/4 NW1/4	40.17
NW1/4 NW1/4	39.98
SW1/4 NW1/4	40.08
SE1/4 NW1/4	40.27
NE1/4 SW1/4	39.98
NW1/4 SW1/4	39.88
SW1/4 SW1/4	39.73
SE1/4 SW1/4	39.83
NE1/4 SE1/4	38.80
NW1/4 SE1/4	38.68
SW1/4 SE1/4	38.73
SE1/4 SE1/4	38.85
TOTAL AREA	909.23
FEDERAL INTEREST LAND RESURVEYED	

**LEGEND**

- ◊ Original corner previously remonumented
- ◆ Original corner remonumented this survey
- Corner previously established or reestablished
- Corner previously established or reestablished; remonumented this survey
- Corner established or reestablished this survey
- + Corner point calculated, no monument set

NOTE: The lightweight exterior lines with bearings and distances shown in section 21 were surveyed by Marvin J. Lytle and Palmer Norseth in 1952, and were utilized to calculate the areas of Federal interest land.

UNITED STATES DEPARTMENT OF THE INTERIOR  
BUREAU OF LAND MANAGEMENT  
Portland, Oregon

This plat is strictly conformable to the approved field notes, and the survey, having been correctly executed in accordance with the requirements of law and the regulations of this Bureau, is hereby accepted.

For the Director  
*May J. M. Hunt*  
Chief Cadastral Surveyor of Oregon

May 25, 2021  
Date

OFFICIALLY FILED: 8/19/2021