

TOWNSHIP 19 SOUTH, RANGE 8 WEST, OF THE WILLAMETTE MERIDIAN, OREGON

DEPENDENT RESURVEY AND SUBDIVISION OF SECTION 30

FILED
 Date: 6/20/2018 By: JC
 This survey consists of:
 Map: 2018-1
 Narrative: Vol 59
 Corner Rpt: Pgs 23525-23546

DOUGLAS COUNTY
 SURVEYOR

A history of surveys, corner descriptions, and other relevant information are contained in the field notes.

This plat represents a dependent resurvey of portions of the south and west boundaries and subdivisional lines, designed to restore the corners in their true original locations according to the best available evidence, and the subdivision of section 30, Township 19 South, Range 8 West, Willamette Meridian, Oregon.

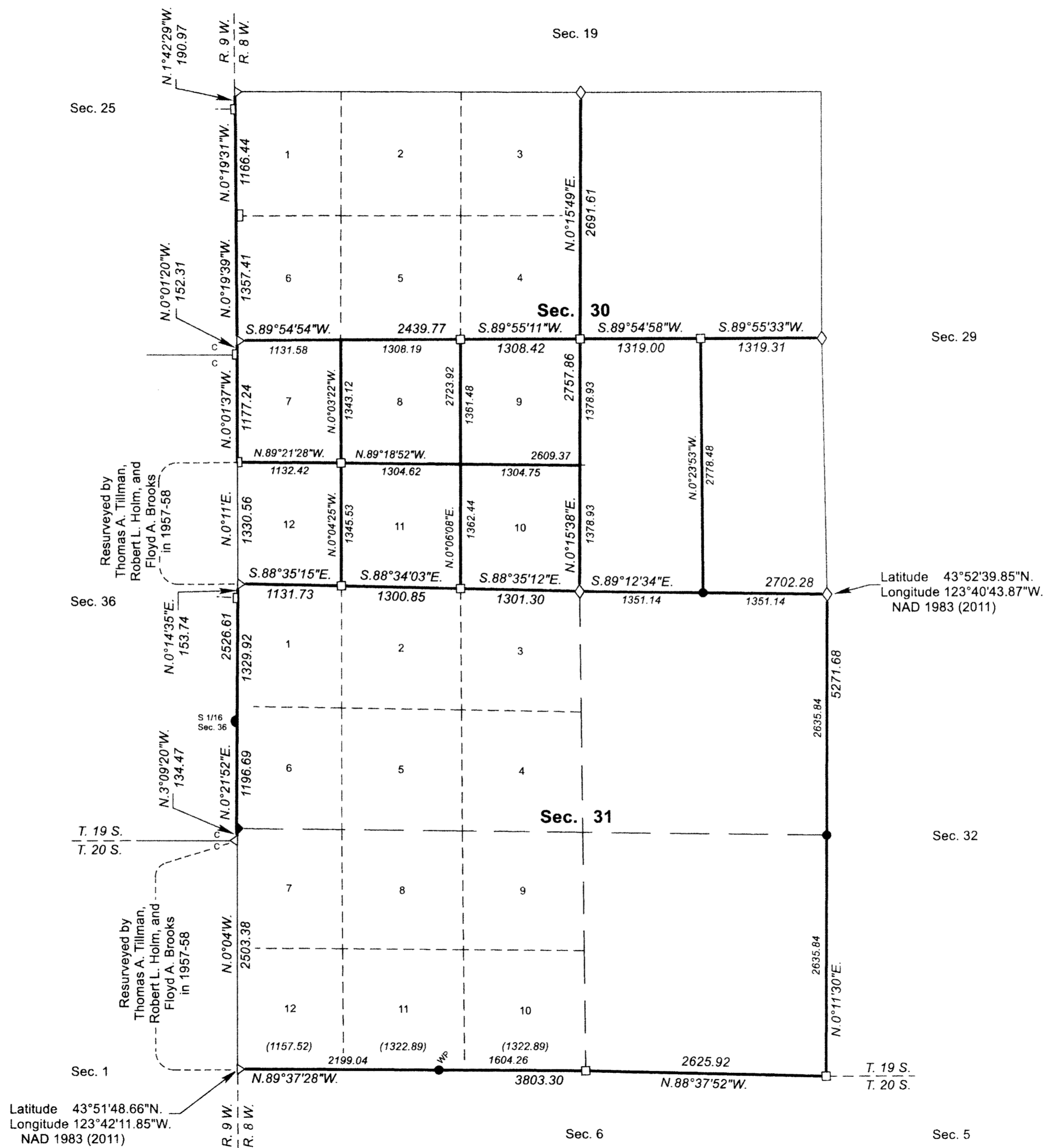
Official areas based on the measurements of this survey have been returned for Federal interest land where indicated. Aliquot part legal subdivisions retain their aliquot characteristics and refer to precisely the same land as that which was previously identified by its original survey or description. A lot can only be subdivided by survey or supplemental plat. Except as indicated hereon, the lottings and areas are as shown on the plat approved April 4, 1892.

Survey executed by Edith M. Forkner and Jason A. Lightbown, Cadastral Surveyors, beginning February 4, 2016, and completed June 23, 2016, pursuant to special instructions approved February 1, 2016, for Group No. 2820, Oregon.

OFFICIALLY FILED: 3/2/2018



LEGAL SUBDIVISION	OFFICIAL ACRES
SECTION 30	
LOT 9	41.10
LOT 10	41.00
LOT 12	34.76
NW1/4 SE1/4	42.16
SW1/4 SE1/4	42.67
SECTION 31	
NE1/4 NE1/4	40.74
NW1/4 NE1/4	40.75
SW1/4 NE1/4	40.45
SE1/4 NE1/4	40.45
LOT 1	34.86
LOT 2	39.83
LOT 3	39.61
LOT 4	39.84
LOT 5	40.05
LOT 6	35.10
LOT 7	34.58
LOT 8	39.65
LOT 9	39.52
LOT 10	39.61
LOT 11	39.74
LOT 12	34.80
NE1/4 SE1/4	40.05
NW1/4 SE1/4	39.82
SW1/4 SE1/4	39.53
SE1/4 SE1/4	39.76
TOTAL AREA	980.43
FEDERAL INTEREST LAND RESURVEYED	



LEGEND	
◇	Original corner previously remonumented
◆	Original corner remonumented this survey
□	Corner previously established or reestablished
●	Corner established or reestablished this survey
+	Corner point calculated, no monument set
()	Calculated distance

UNITED STATES DEPARTMENT OF THE INTERIOR
 BUREAU OF LAND MANAGEMENT
 Portland, Oregon

This plat is strictly conformable to the approved field notes, and the survey, having been correctly executed in accordance with the requirements of law and the regulations of this Bureau, is hereby accepted.

For the Director

Mary J. M. Husted

Chief Cadastral Surveyor of Oregon

January 25, 2018

Date

