

TOWNSHIP 19 SOUTH, RANGE 8 WEST, OF THE WILLAMETTE MERIDIAN, OREGON

Date: 12/5/2019 By: JC
This survey consists of:
Map: PLAT: T19-8W 2011-2
Narrative: VOL. 59 PG 23653
Corner Rep: NO SEPARATE LINES NOTES
ALL INFORMATION IS ON THE PLAT

DEPENDENT RESURVEY

DOUGLAS COUNTY
SURVEYOR

This plat constitutes the entire record of the dependent resurvey of a portion of the south boundary, T. 19 S., R. 8 W., Willamette Meridian, Oregon, designed to restore the corners in their true original locations according to the best available evidence.

The history of official Federal surveys pertaining to this resurvey is as follows:

In 1891, Charles M. Collier, U.S. Deputy Surveyor, surveyed the south boundary and subdivisional lines as shown on the official plat of survey approved April 4, 1892, accepted February 14, 1893.

In 1952, Marvin J. Lytle and Palmer Norseth, U.S. Cadastral Engineers, resurveyed a portion of the south boundary and subdivisional lines as shown on the official plat of survey, accepted May 29, 1953.

In 1967, William W. Glenn, C. Albert White, and James E. Jelley, Cadastral Surveyors, remonumented certain original corner points in T. 20 S., R. 8 W., as shown in the official field notes, approved March 3, 1977.

In 2005, Aaron M. Graham, Cadastral Surveyor, rehabilitated certain corner points in T. 20 S., R. 8 W. as shown in the official field notes, approved January 30, 2009.

The survey was executed in accordance with the specification set forth in the Manual of Surveying Instructions (2009) and the special instructions dated February 19, 2010, approved February 22, 2010, for Group 2305.

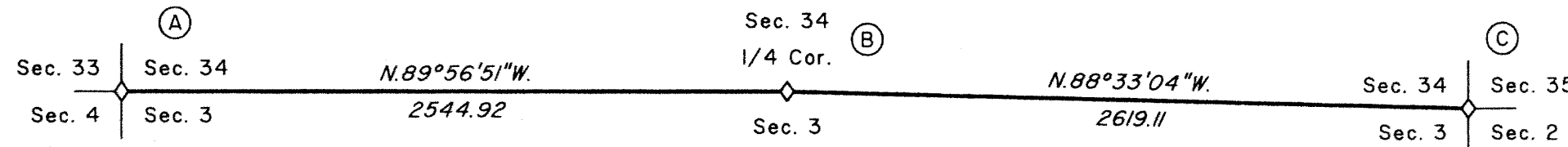
The direction of the line is based on the true meridian as determined by direct solar observation and carried forward by sustained angulation using conventional survey techniques. All measurements along the line were derived through the use of electronic measuring equipment. Measured distances and directions have been adjusted by computer software that incorporates a least squares adjustment routine. The adjusted mean bearing and horizontal ground distance is reported to the nearest second and 0.01 foot.

Official acreage and lot designations of Federal interest land are as shown on the plat approved April 4, 1892.

Each new bearing tree has a 2 1/2 inch x 1/4 inch magnetic nail (Mag Nail) driven at the base on right side center, unless otherwise noted in the corner description.

The geographic positions shown hereon were determined by a tie from a temporary Global Positioning System (GPS) control point, utilizing dual frequency, carrier phase GPS receivers, using the National Geodetic Survey's Online Positioning User Service (OPUS).

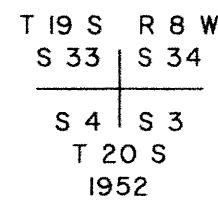
The survey was executed by Daniel N. Patterson, Cadastral Surveyor, beginning March 16, 2010, and completed April 13, 2010. He was assisted by Gene M. Deguerre, Jonathan V. Eastman, Shawn V. McCauley, and Marc A. Montpos, Survey Technicians.



Latitude 43°51'45.35\"N.
Longitude 123°38'21.25\"W.
(NAD 1983 (CORS 96))

Latitude 43°51'44.67\"N.
Longitude 123°37'10.78\"W.
(NAD 1983 (CORS 96))

(A) The cor. of secs. 3, 4, 33, and 34, on the south bdy. of the township, monumented with an iron post, 2 ins. diam., firmly set, projecting 8 ins. above the ground, with brass cap mkd.



from which the remains of the original bearing trees

A metal capped fir stump, 46 ins. diam., bears N. 26 1/2° E., 48.2 ft. dist., with no marks visible.

A fir, 62 ins. diam., bears S. 49° E., 45.5 ft. dist., with a healed blaze.

A decayed fir snag, 42 ins. diam., bears N. 54° W., 52.8 ft. dist., with a healed blaze.

and the remains of a bearing tree mkd. by Lytle and Norseth in 1952

A decayed hemlock stump, 27 ins. diam., bears S. 55 3/4° W., 59.4 ft. dist., with no marks visible.

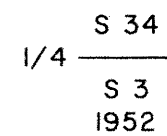
and bearing trees mkd. by Graham in 2005

An alder, 7 ins. diam., bears N. 36° E., 18.7 ft. dist., with scribe marks T19S R8W S34 BT visible on the bark.

A fir, 11 ins. diam., bears S. 45° W., 4.8 ft. dist., with a healed blaze.

A fir, 14 ins. diam., bears N. 8 1/4° W., 6.7 ft. dist., with a healed blaze.

(B) The 1/4 sec. cor. of secs. 3 and 34, on the south bdy. of the township, monumented with an iron post, 1 in. diam., firmly set, projecting 6 ins. above the ground, with brass cap mkd.



from which the remaining original bearing tree

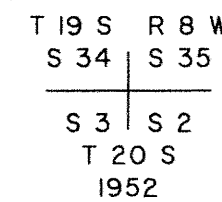
A fir, 38 ins. diam., bears S. 5° W., 9.9 ft. dist., with a healed blaze.

and new bearing trees

A fir, 6 ins. diam., bears N. 89 3/4° W., 13.2 ft. dist., mkd. 1/4 S34 BT.

A hemlock, 7 ins. diam., bears N. 6 1/2° W., 16.6 ft. dist., mkd. 1/4 S34 BT.

(C) The cor. of secs. 2, 3, 34, and 35, on the south bdy. of the township, monumented with an iron post, 2 ins. diam., firmly set, projecting 10 ins. above the ground, with brass cap mkd.



from which the remaining original bearing tree

A fir, 52 ins. diam., bears S. 85° W., 20.5 ft. dist., with a healed blaze.

and a bearing tree mkd. by Lytle and Norseth in 1952

A fir, 50 ins. diam., bears N. 38° W., 35.0 ft. dist., with a healed blaze.

and new bearing trees

A fir, 13 ins. diam., bears N. 14 1/4° E., 19.6 ft. dist., mkd. T19S R8W S35 BT.

A fir, 9 ins. diam., bears N. 69 1/2° E., 16.6 ft. dist., mkd. T19S R8W S35 BT.

There are no suitable trees in sec. 2.

I, Daniel N. Patterson, Cadastral Surveyor, HEREBY CERTIFY upon honor, that in pursuance of special instructions bearing the approval date of the 22nd day of February, 2010, and the assignment instructions bearing the date of the 24th day of February, 2010, I have dependently resurveyed a portion of the south boundary, Township 19 South, Range 8 West, Willamette Meridian, Oregon, which is represented upon this plat as having been executed by me and under my direction; and that said resurvey has been made in strict conformity with said special instructions, the Manual of Survey Instructions, and in specific manner described upon this plat.

Daniel N. Patterson
Cadastral Surveyor
9-13-11
Date

LEGEND
◇ Original corner previously remonumented

UNITED STATES DEPARTMENT OF THE INTERIOR
BUREAU OF LAND MANAGEMENT

Portland, Oregon

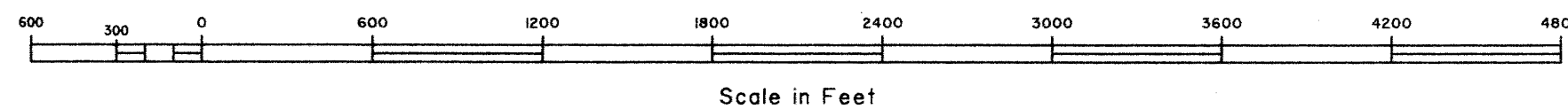
The survey represented by this plat, having been correctly executed in accordance with the requirements of law and the regulations of this Bureau, is hereby accepted.

For the Director

Mary J. M. Hartzel

Chief Cadastral Surveyor of Oregon

September 19, 2011
Date



Scale in Feet

OFFICIALLY FILED: 10/17/2011