

FILED

Date: 10/20/2011 By: JC  
This survey consists of:  
Map: 2011-1 3 pgs total  
Narrative: NOT IN DOUGLAS COUNTY  
Corner Rpt:

TOWNSHIP 19 SOUTH, RANGE 8 WEST, OF THE WILLAMETTE MERIDIAN, OREGON

SHEET 1 OF 3

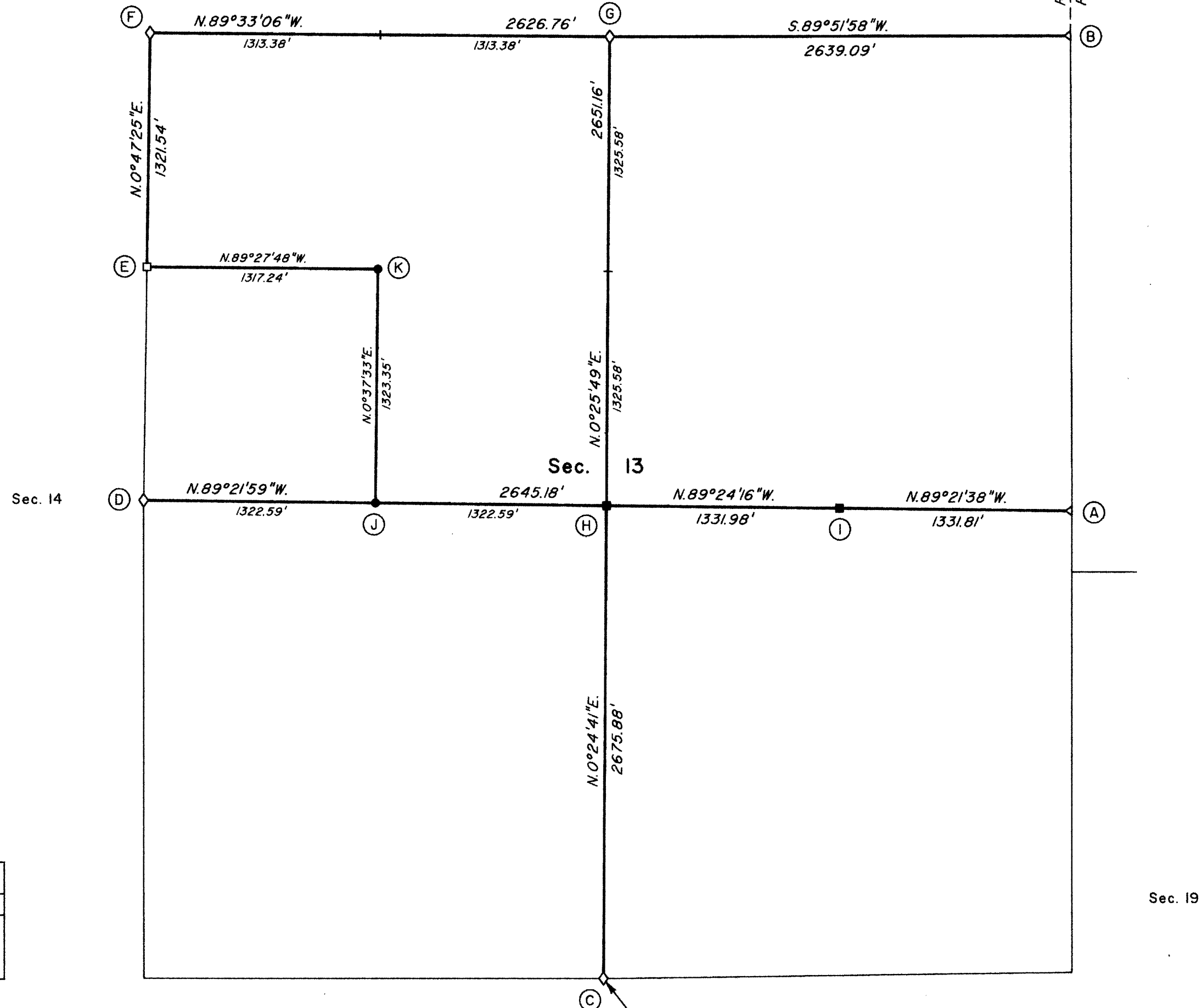
DEPENDENT RESURVEY AND SUBDIVISION OF SECTION 13

DOUGLAS COUNTY SURVEYOR

Sec. 11

Sec. 12

Sec. 18



LEGAL SUBDIVISION	OFFICIAL ACRES
SECTION 13	
NE 1/4 NW 1/4	40.01
NW 1/4 NW 1/4	39.93
SE 1/4 NW 1/4	40.14

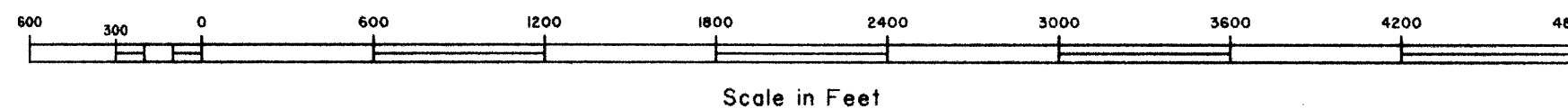
I, Daniel N. Patterson, Cadastral Surveyor, HEREBY CERTIFY upon honor, that in pursuance of Special Instructions bearing the date of the 16th day of July, 2009, I have dependently resurveyed a portion of the subdivisional lines and subdivided section 13, Township 19 South, Range 8 West, of the Willamette Meridian, in the State of Oregon, which is represented upon this plat as having been executed by me and under my direction. Said survey has been made in strict conformity with said Special Instructions, the Manual of Instructions for the Survey of the Public Lands of the United States, 1973, and in specific manner described on this plat.

*Daniel N. Patterson*  
Cadastral Surveyor

8-24-11  
Date

Sec. 24 Latitude 43°54'21.48"N.  
Longitude 123°35'22.64"W.  
(NAD 1983 (CORS 96))

- LEGEND**
- ◊ Original corner previously remonumented
  - Corner previously established or reestablished
  - Corner previously established or reestablished; remonumented this survey
  - Corner established or reestablished this survey
  - + Corner point calculated, no monument set



This plat represents the entire record of the dependent resurvey of a portion of the subdivisional lines, T. 19 S., R. 8 W., Willamette Meridian, Oregon, designed to restore the corners in their true original locations according to the best available evidence, and the subdivision of section 13.

A history of surveys pertaining to this resurvey is on Sheet 3 of 3.

Preliminary to the resurvey, the lines of the prior surveys were retraced and a search was made for all corners and other calls of record. The retracement data were thoroughly verified and only the true line data is given hereon. Only those lines bounding or crossing public land were blazed.

The directions of the lines are based on the true meridian as determined by direct solar observation.

An analysis of the unadjusted field data assured a closure not exceeding 1:4000 in error. Measured distances and directions have been adjusted by computer software that incorporates a least squares adjustment routine. The adjusted bearings and distances are reported to the nearest second and 0.01 foot.

Actual quantity acreages have been returned for Federal interest lands where indicated. Changes in the official acreage of land described by aliquot part or lot number do not alter its description. Further subdivision of aliquot parts shall be in accordance with the Manual. Further subdivision of official lots may only be by supplemental plat or official survey. Official acreage and lot designations of Federal interest lands not affected by this survey are as shown on the plat approved April 4, 1892.

The geographic position shown hereon was determined by NAVSTAR Global Positioning System (GPS) ties utilizing the National Geodetic Survey's Online Positioning User Service (OPUS) (NAD 1983 (CORS 96)).

The survey was performed utilizing both conventional (directly measured angles and distances) and NAVSTAR GPS satellite techniques.

Each new bearing tree has a 2 1/2 inch x 1/4 inch magnetic nail (Mag Nail) driven at the base on right side center, unless otherwise noted in the corner description.

This survey was executed by Daniel N. Patterson, Cadastral Surveyor, beginning August 18, 2009, and completed October 06, 2009, in accordance with the specification set forth in the Manual of Surveying Instructions, 1973; pursuant to Special Instructions dated July 16, 2009, approved July 23, 2009, which provided for the survey included under Group Number 2283, Oregon, and Assignment Instructions dated August 11, 2009. He was assisted by Shawn V. McCauley, Jonathan V. Eastman, and Jason A. Lightbown, Surveying Technicians, and Robert L. Laney, Surveyor Assistant.

UNITED STATES DEPARTMENT OF THE INTERIOR  
BUREAU OF LAND MANAGEMENT

Portland, Oregon

This plat, which constitutes the entire record of this survey, having been correctly executed in accordance with the requirements of law and the regulations of this Bureau, is hereby accepted.

For the Director

*Mary J. M. Hartz*

Chief Cadastral Surveyor of Oregon

August 29, 2011  
Date

OFFICIALLY FILED: 10/17/2011

TOWNSHIP 19 SOUTH, RANGE 8 WEST, OF THE WILLAMETTE MERIDIAN, OREGON

DEPENDENT RESURVEY AND SUBDIVISION OF SECTION 13

(A) The 1/4 sec. cor. of sec. 13 only, on the E. bdy. of the Tp., perpetuated by Ward, PLS No. 1091, in 2000, monumented with an iron post, 1 in. diam., firmly set, projecting 12 ins. above the ground, with cap oriented south, with brass cap mkd.

1/4 S 13 |  
1949

from which an original bearing tree

A maple, 27 ins. diam., bears N. 43° E., 38.9 ft. dist., no marks visible on a partially open decayed blaze.

and a bearing tree mkd. by Price and Tillman in 1949

A fir, 68 ins. diam., bears S. 40 1/4° W., 43.6 ft. dist., with a healed blaze.

and bearing trees mkd. by Ward

A fir, 17 ins. diam., bears N. 60° E., 30.9 ft. dist., with a healed blaze.

A fir, 12 ins. diam., bears N. 83° W., 10.6 ft. dist., with a healed blaze.

(B) The cor. of secs. 12 and 13 only, on the E. bdy. of the Tp., perpetuated by White, PLS No. 70652, in 2007, monumented with an iron post, 2 ins. diam., firmly set, projecting 1 in. above the ground, with brass cap mkd.

T 19 S T 19 S  
S 12 | R 7 W  
S 13 | S 18  
R 8 W  
1949

from which the remains of an original bearing tree

A fir stump, 69 ins. diam., bears N. 58 1/2° W., 13.2 ft. dist., with no marks visible.

and a bearing tree mkd. by Price and Tillman in 1949

A maple, size indeterminate, bears S. 21° W., 35.6 ft. dist., with a healed blaze.

and bearing trees mkd. by White

An Alder, 13 ins. diam., bears N. 23° E., 3.5 ft. dist., with scribe marks S18 BT visible on partially healed blaze.

An Alder, 14 ins. diam., bears S. 44° E., 28.3 ft. dist., with scribe marks S18 BT visible on partially healed blaze.

A maple, 17 ins. diam., bears S. 37° W., 9.1 ft. dist., with scribe marks S13 BT visible on partially healed blaze.

A fir, 14 ins. diam., bears N. 55° W., 16.7 ft. dist., with scribe marks S12 BT visible on partially healed blaze.

(C) The 1/4 sec. cor. of secs. 13 and 24, perpetuated by Ward, PLS No. 1091, in 2000, monumented with an iron post, 2 1/2 ins. diam., firmly set, projecting 12 ins. above the ground, with brass cap mkd.

T 19 S R 8 W  
S 13  
1/4 S 24  
1980

from which the remains of original bearing trees

A decayed maple snag, 29 ins. diam., bears N. 13° E., 15.2 ft. dist., with no marks visible.

A decayed fir snag, 26 ins. diam., bears S. 32° W., 19.8 ft. dist., with a healed blaze.

and a bearing tree mkd. by Ward

An Alder, 11 ins. diam., bears N. 5° W., 48.4 ft. dist., with scribe marks 1/4 S13 BT visible on bark.

and a new bearing tree

A cedar, 3 ins. diam., bears N. 61 3/4° W., 6.5 ft. dist., mkd. 1/4 S13 BT.

There are no trees available in sec. 24.

(D) The 1/4 sec. cor. of secs. 13 and 14, perpetuated by Ward, PLS No. 1091, in 2000, monumented with an iron post, 2 1/2 ins. diam., firmly set, projecting 2 ins. above the ground, with brass cap mkd.

T 19 S R 8 W  
1/4 S 14 | S 13  
1980

from which the remains of bearing trees mkd. by International Paper Company in 1969, and reported by Fischer and Mattson in 1980

A decayed hemlock stump, size indeterminate, bears S. 5° W., 6.6 ft. dist., with no marks visible.

A decayed fir stump, size indeterminate, bears N. 66 1/2° W., 38.9 ft. dist., with no marks visible.

and the remains of a bearing tree mkd. by Sinniger and Lyda, BLM Administrative Surveyors, in 1979

A tin capped hemlock stump, 22 ins. diam., bears S. 40 1/4° W., 46.9 ft. dist., with scribe mark "T" visible on partially healed blaze. (Record, 47.5 ft. dist.)

and the remains of bearing trees mkd. by Fischer and Mattson in 1980

A root hole, bears S. 6 1/2° E., 83.2 ft. dist., alongside of which is lying a tin capped decayed hemlock stump, 16 ins. diam., with scribe marks 1/4 S B visible on partially healed blaze.

A tin capped decayed fir stump, 19 ins. diam., bears S. 65 1/2° W., 73.3 ft. dist., with no marks visible.

and a bearing tree mkd. by Ward

A fir, 17 ins. diam., bears S. 55° E., 7.3 ft. dist., with a healed blaze.

and a new bearing tree

A fir, 13 ins. diam., bears N. 18 1/4° W., 13.6 ft. dist., mkd. 1/4 S14 BT.

(E) The north 1/16 sec. cor. of secs. 13 and 14, monumented with an iron post, 2 1/2 ins. diam., firmly set, projecting 1 in. above the ground, with brass cap mkd.

N 1/16  
S 14 | S 13  
1980

from which bearing trees mkd. by Sinniger and Lyda, BLM Administrative Surveyors, in 1979

A fir, 21 ins. diam., bears N. 81 3/4° W., 7.3 ft. dist., with a healed blaze.

A maple, 14 ins. diam., bears N. 10 1/2° W., 4.6 ft. dist., with a healed blaze.

and a bearing tree mkd. by Fischer and Mattson in 1980

An Alder, 20 ins. diam., bears N. 37 1/2° E., 23.8 ft. dist., with a healed blaze.

(F) The cor. of secs. 11, 12, 13, and 14, monumented with an iron post, 2 1/2 ins. diam., firmly set, projecting 2 ins. above the ground, with brass cap mkd.

T 19 S R 8 W  
S 11 | S 12  
S 14 | S 13  
1980

from which the remains of original bearing trees

A root hole, bears N. 29 1/2° E., 9.2 ft. dist., alongside of which is lying a decayed cedar stub, 22 ins. diam., with no marks visible.

A cedar snag, 44 ins. diam., bears S. 4 1/2° E., 37.0 ft. dist., with no marks visible.

A cedar stump, 48 ins. diam., bears N. 5 1/2° W., 26.4 ft. dist., with no marks visible.

and the remains of bearing trees mkd. by Sinniger and Lyda, BLM Administrative Surveyors, in 1979

A hemlock, 25 ins. diam., bears N. 70 1/2° E., 16.5 ft. dist., with scribe marks T19S R8W S12 BT visible on partially healed blaze.

A cedar snag, 33 ins. diam., bears S. 9° W., 20.1 ft. dist., with a healed blaze.

and the remains of bearing trees mkd. by Fischer and Mattson in 1980

A hemlock, 28 ins. diam., bears S. 51 3/4° E., 26.3 ft. dist., with a healed blaze. (Record, 25.7 ft. dist.)

A decayed fir snag, 20 ins. diam., bears S. 44° W., 56.1 ft. dist., with a healed blaze.

A hemlock, 23 ins. diam., bears N. 15° W., 30.7 ft. dist., with a healed blaze.

and a new bearing tree

A hemlock, 9 ins. diam., bears S. 24 1/4° W., 24.6 ft. dist., mkd. T19S R8W S14 BT.

(G) The 1/4 sec. cor. of secs. 12 and 13, perpetuated by Ward, PLS No. 1091, in 2000, monumented with an iron post, 2 1/2 ins. diam., firmly set, projecting 5 ins. above the ground, with brass cap mkd.

T 19 S R 8 W  
S 12  
1/4 S 13  
1980

from which an original bearing tree

A fir, 47 ins. diam., bears N. 49 1/2° E., 15.3 ft. dist., with a healed blaze. (Record, N. 55° E., 16.5 ft. dist.)

and a bearing tree mkd. by Fischer and Mattson in 1980

A fir, 36 ins. diam., bears S. 15° W., 35.0 ft. dist., with a healed blaze. (Record, 36.0 ft.)

and bearing trees mkd. by Ward

A cedar, 27 ins. diam., bears S. 18° E., 15.6 ft. dist., with scribe marks S13 BT visible on partially healed blaze.

A fir, 7 ins. diam., bears N. 22 1/2° E., 11.4 ft. dist., with a healed blaze.

FILED

Date: 10/20/2011 By: JC  
This survey consists of:  
Map: 2011-1 3 pgs total  
Narrative: NOT IN DOUGLAS COUNTY  
Corner Rpt:

DOUGLAS COUNTY  
SURVEYOR

UNITED STATES DEPARTMENT OF THE INTERIOR  
BUREAU OF LAND MANAGEMENT

Portland, Oregon

This plat, which constitutes the entire record of this survey, having been correctly executed in accordance with the requirements of law and the regulations of this Bureau, is hereby accepted.

For the Director

*Mary J. M. Hunt*

Chief Cadastral Surveyor of Oregon

August 29, 2011  
Date

TOWNSHIP 19 SOUTH, RANGE 8 WEST, OF THE WILLAMETTE MERIDIAN, OREGON

SHEET 3 OF 3

DEPENDENT RESURVEY AND SUBDIVISION OF SECTION 13

FILED  
Date: 10/20/2011 By: JC  
This survey consists of:  
Map: 2011-1 3 pgs total  
Narrative: NOT IN DOUGLAS COUNTY  
Corner Rpt:

DOUGLAS COUNTY  
SURVEYOR

(H) The center 1/4 sec. cor. of sec. 13, established at the intersection of the north-south and the east-west centerlines by Sinniger and Lyda, in 1979, during an unofficial administrative survey by Eugene District Office, Bureau of Land Management, utilized and accepted by Ward, PLS No. 1091, in 2000, and is accepted as the corner, monumented with an iron rod, 3/4 in. diam., firmly set, projecting 3 ins. above the ground, from which bearing trees mkd. by Sinniger and Lyda

A fir, 21 ins. diam., bears S. 48° W., 23.8 ft. dist., with a healed blaze.

A fir, 23 ins. diam., bears N. 52 1/2° W., 15.7 ft. dist., with a healed blaze.

and bearing trees mkd. by Ward

A fir, 21 ins. diam., bears N. 24° E., 33.2 ft. dist., with a healed blaze.

A fir, 27 ins. diam., bears S. 25° E., 36.1 ft. dist., with a healed blaze.

At the corner point

Set a stainless steel post, 28 ins. long, 2 1/2 ins. diam., 24 ins. in the ground, with brass cap mkd.

T 19 S R 8 W  
C 1/4 S 13  
2009

Deposit a magnet in a white plastic case at the base of, and iron rod inside the stainless steel post.

(I) The center E 1/16 sec. cor. of sec. 13, established by Sinniger and Lyda, in 1979, during an unofficial administrative survey by Eugene District Office, Bureau of Land Management, utilized and accepted by Ward, PLS No. 1091, in 2000, and is accepted as the corner, monumented with an iron rod, 3/4 in. diam., firmly set, projecting 4 ins. above the ground, from which bearing trees mkd. by Sinniger and Lyda

A fir, 27 ins. diam., bears N. 63 1/2° E., 34.6 ft. dist., with a healed blaze.

A fir, 54 ins. diam., bears N. 53 3/4° W., 23.0 ft. dist., with a healed blaze.

and an accessory by persons unknown

An iron rod, 5/8 in. diam., firmly set, projecting 4 ins. from the center of a decayed fir stump, 64 ins. diam., bears S. 57 3/4° W., 57.3 ft. dist.

At the corner point

Set a stainless steel post, 28 ins. long, 2 1/2 ins. diam., 24 ins. in the ground, with brass cap mkd.

E 1/16  
C ——— C  
S 13  
2009

Deposit a magnet in a white plastic case at the base of, and iron rod inside the stainless steel post.

(J) Point for the center W 1/16 sec. cor. of sec. 13.

Set a stainless steel post, 28 ins. long, 2 1/2 ins. diam., 24 ins. in the ground, with brass cap mkd.

W 1/16  
C ——— C  
S 13  
2009

from which

A maple, 16 ins. diam., bears S. 50 1/4° W., 18.0 ft. dist., mkd. CW 1/16 S13 BT.

A fir, 23 ins. diam., bears N. 18 1/4° W., 33.0 ft. dist., mkd. CW 1/16 S13 BT.

Deposit a magnet in a white plastic case at the base of the stainless steel post.

From this point, a point established as the center W 1/16 sec. cor. of sec. 13, by Sinniger and Lyda, in 1979, during an unofficial administrative survey by Eugene District Office, Bureau of Land Management, monumented with an iron rod, 3/4 in. diam., firmly set, projecting 5 ins. above the ground; bears S. 46° 32' 41" W., 0.35 ft. dist. This point was not utilized in the course of this survey. From which bearing trees mkd. by Sinniger and Lyda

A fir, 18 ins. diam., bears N. 6 1/2° E., 29.9 ft. dist., with a healed blaze.

A fir, 28 ins. diam., bears S. 60 1/2° E., 15.2 ft. dist., with a healed blaze.

I remove the iron rod and deposit inside stainless steel post.

No marks were removed from the trees due to their size.

(K) Point for the NW 1/16 sec. cor. of sec. 13.

Set a stainless steel post, 28 ins. long, 2 1/2 ins. diam., 24 ins. in the ground, with brass cap mkd.

NW 1/16  
S 13  
2009

from which

A fir, 6 ins. diam., bears S. 65 1/2° W., 22.6 ft. dist., mkd. NW 1/16 S13 BT.

A fir, 6 ins. diam., bears N. 16° W., 3.6 ft. dist., mkd. NW 1/16 S13 BT.

Deposit a magnet in a white plastic case at the base of the stainless steel post.

From this point, a point established as the NW 1/16 sec. cor. of sec. 13, by Sinniger and Lyda, in 1979, during an unofficial administrative survey by Eugene District Office, Bureau of Land Management, monumented with an iron rod, 3/4 in. diam., firmly set, projecting 3 ins. above the ground; bears N. 49° 47' 48" E., 0.50 ft. dist. This point was not utilized in the course of this survey. From which the remains of a bearing tree mkd. by Sinniger and Lyda

A decayed fir stump, 32 ins. diam., bears N. 20 3/4° W., 10.1 ft. dist., with a healed blaze.

I remove the iron rod and deposit inside stainless steel post.

No marks were removed from the tree due to its size.

A history of surveys pertaining to this resurvey is as follows:

In 1891, Charles M. Collier, U.S. Deputy Surveyor, surveyed the east boundary and the subdivisional lines, as shown on the official plat of survey approved April 4, 1892, accepted February 14, 1893.

In 1892, W. F. Briggs, U.S. Special Inspector of Surveys, retraced a portion of the subdivisional lines, as shown in the official notes notorized November 12, 1892.

In 1949, Norman D. Price and Thomas A. Tillman, Cadastral Engineers, resurveyed the west boundary and the subdivisional lines of T. 19 S., R. 7 W., as shown on the official plat of survey accepted May 16, 1951.

In 1980, Lester E. Fischer and David W. Mattson, Cadastral Surveyors, resurveyed a portion of the subdivisional lines and remonumented certain original corner points without survey, as shown on the official plat of survey accepted August 31, 1983.

The following plats and field notes filed in the Lane County Surveyors Office are referred to in subsequent corner descriptions and are referenced by surveyor's last name, Professional Land Surveyor number, and year.

Date	Name	Registration Number	File Number	File Type
1980	L. Sinniger & S. Lyda	BLM Admin Surveyors	23924	Survey Plat
2000	Robert B. Ward Jr.	PLS 1091	36585	Survey Plat
2007	Nick White	PLS 70652	(No Index #)	Visitation

UNITED STATES DEPARTMENT OF THE INTERIOR  
BUREAU OF LAND MANAGEMENT

Portland, Oregon

This plat, which constitutes the entire record of this survey, having been correctly executed in accordance with the requirements of law and the regulations of this Bureau, is hereby accepted.

For the Director

*Mary J. M. Hartzel*

Chief Cadastral Surveyor of Oregon

August 29, 2011  
Date