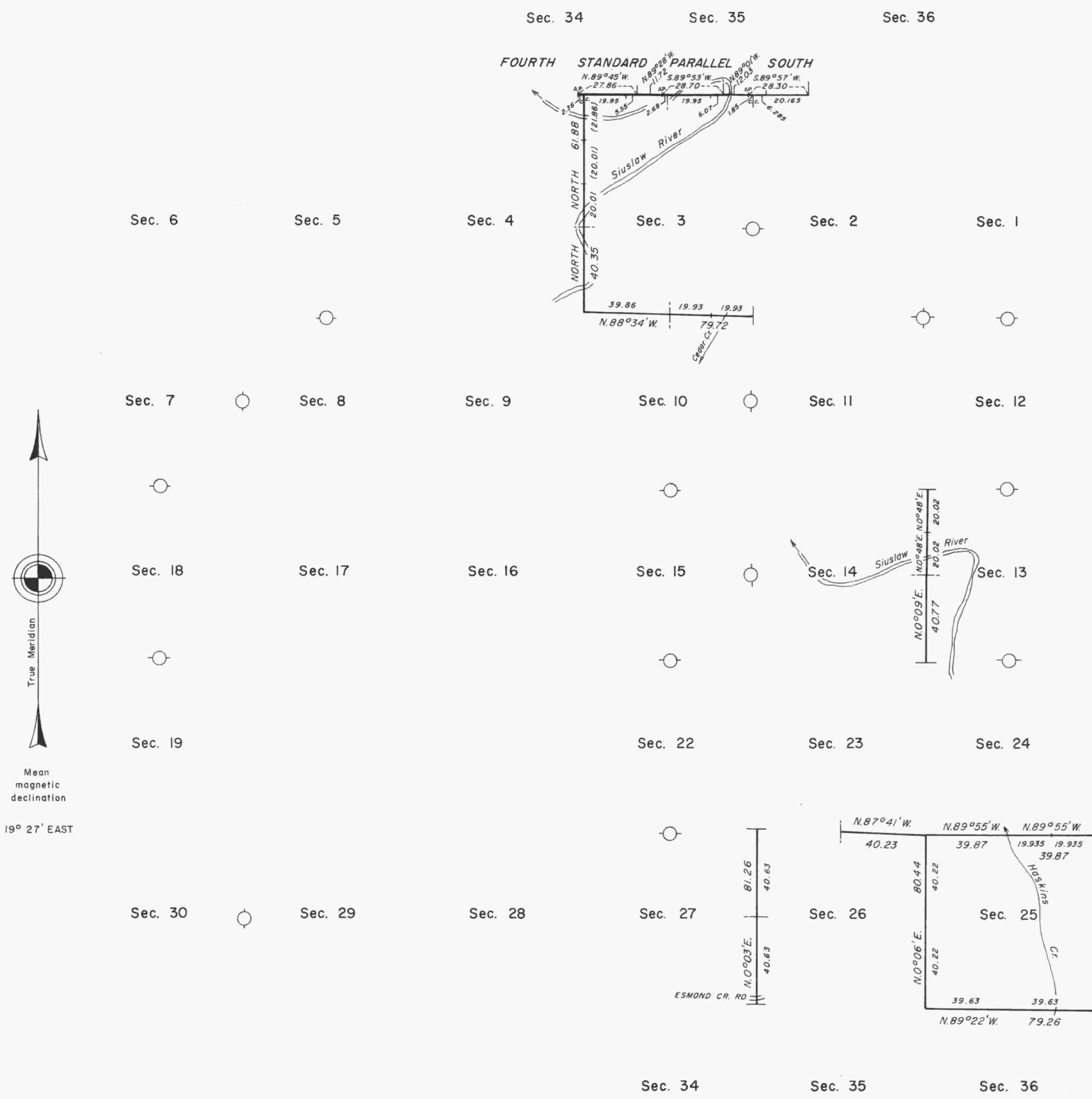


# TOWNSHIP 19 SOUTH, RANGE 8 WEST, OF THE WILLAMETTE MERIDIAN, OREGON

## DEPENDENT RESURVEY AND REMONUMENTATION



A history of surveys is contained in the field notes.

This plat represents a dependent resurvey of a portion of the south boundary (Fourth Standard Parallel South) and a portion of the subdivisional lines; and remonumentation of certain original corner points, T. 19 S., R. 8 W., Willamette Meridian, Oregon, designed to restore the corners in their true original locations according to the best available evidence.

The lottings and areas are as shown on the plat approved April 4, 1892.

The survey was executed by Lester E. Fischer and David W. Mattson, Cadastral Surveyors, beginning January 22, 1980 and completed December 12, 1980, pursuant to Special Instructions dated July 13, 1979 and June 12, 1980, and Supplemental Special Instructions dated July 31, 1980, for Group Nos. 1000 and 1029, Oregon.

Timber in this area consists of fir, hemlock, alder, maple, cedar, chinquapin, madrone, and dogwood.

UNITED STATES DEPARTMENT OF THE INTERIOR  
BUREAU OF LAND MANAGEMENT  
Portland, Oregon August 31, 1983

This plat is strictly conformable to the approved field notes, and the survey, having been correctly executed in accordance with the requirements of law and the regulations of this Bureau, is hereby accepted.

For the Director

*William W. Glenn*

Chief Cadastral Surveyor of Oregon

Latitude 43° 52.6' N.  
Longitude 123° 34.7' W.

