

# TOWNSHIP 19 SOUTH, RANGE 8 WEST, OF THE WILLAMETTE MERIDIAN, OREGON.

## DEPENDENT RESURVEY

Sec. 10

Sec. 11

Sec. 15

Sec. 14

Sec. 13

Sec. 22

Sec. 23

Sec. 24

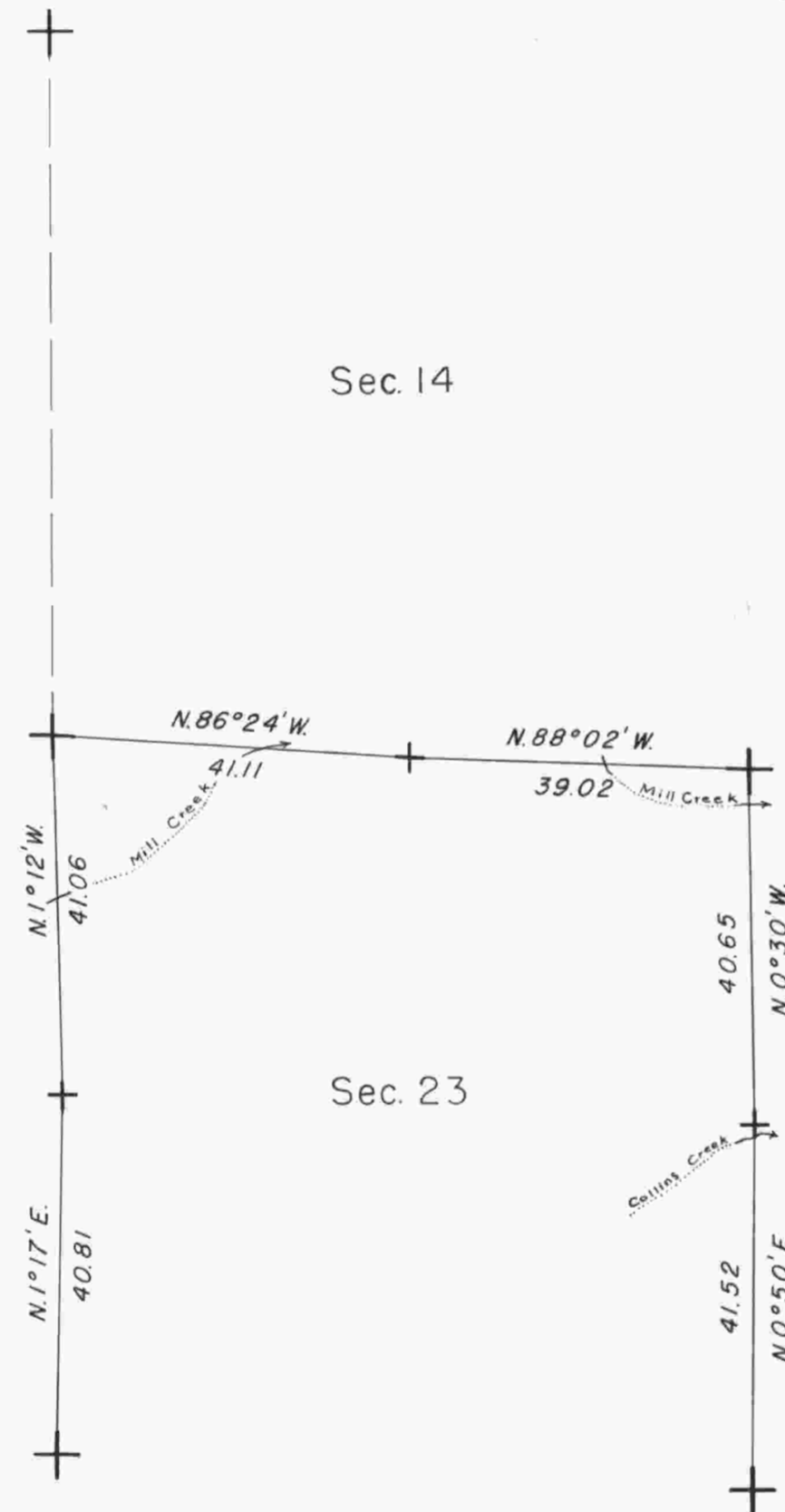
Sec. 27

Sec. 26

Sec. 25



Mean magnetic declination  
20°29' East



Latitude 43° 53' 31" N  
Longitude 123° 35' 54" W

This plat represents a retracement and reestablishment of a portion of the subdivisional lines, and remonumentation of corners as indicated, designed to restore the corners in their true original location according to the best available evidence.

Subdivisional lines surveyed by Charles M. Collier in 1891.

Dependent resurvey of a portion of the subdivisional lines of T. 19 S., R. 8 W., Willamette Meridian, Oregon, executed by Floyd A. Brooks, September 24 to October 24, 1958, under Special Instructions dated September 8, 1958, which provide for the surveys included under Groups 350 and 417, Oregon.

Timber in this area consists of fir, hemlock, cedar, maple, alder, cascara, madrone, and scattering yew.

UNITED STATES DEPARTMENT OF THE INTERIOR  
BUREAU OF LAND MANAGEMENT  
Washington, D.C. October 21, 1959

This plat is strictly conformable to the approved field notes, and the survey, having been correctly executed in accordance with the requirements of law and the regulations of this Bureau, is hereby accepted.

For the Director  
*Clark F. Sumner*  
Acting Cadastral Engineering Staff Officer

+ Corners remonumented in 1958.



*C.F.M.*