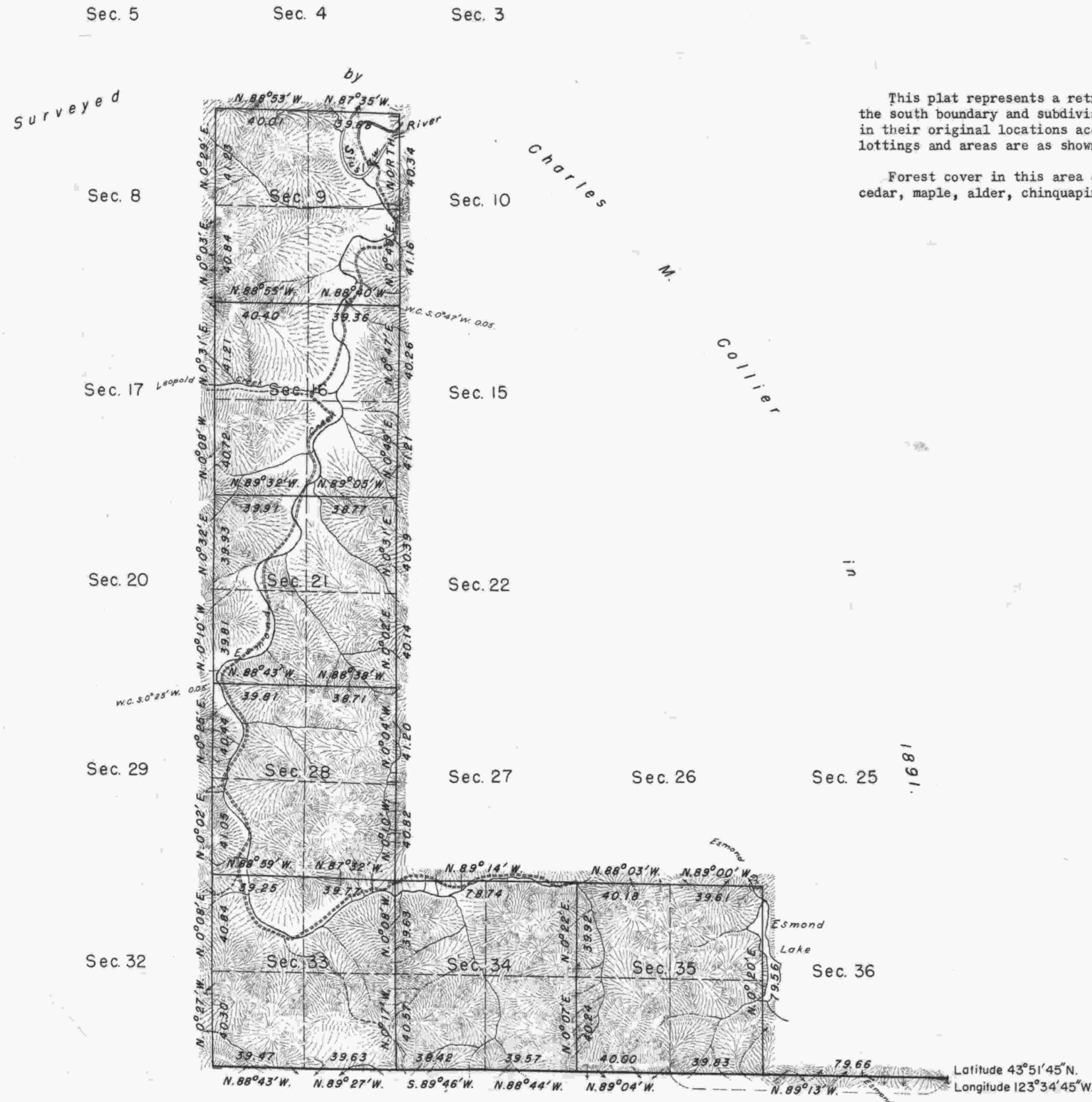


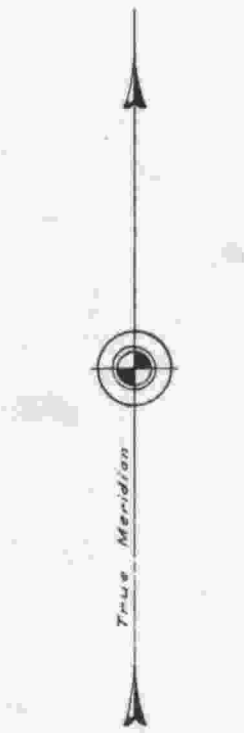
TOWNSHIP 19 SOUTH, RANGE 8 WEST, OF THE WILLAMETTE MERIDIAN, OREGON.

DEPENDENT RESURVEY

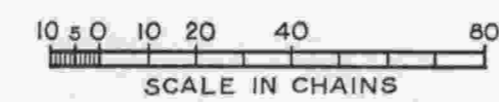


This plat represents a retracement and reestablishment of portions of the south boundary and subdivisional lines designed to restore the corners in their original locations according to the best available evidence. The lottings and areas are as shown on the plat approved April 14, 1892.

Forest cover in this area consists of a heavy growth of fir, hemlock, cedar, maple, alder, chinquapin, madrona, dogwood and some yew.



Mean Magnetic Declination
20° 14' East



Area Resurveyed: 4,480.00 Acres

UNITED STATES DEPARTMENT OF THE INTERIOR
BUREAU OF LAND MANAGEMENT
Washington, D. C., May 29, 1953

This plat is strictly conformable to the approved field notes, and the survey, having been correctly executed in accordance with the requirements of law and the regulations of this Bureau, is hereby accepted.

For the Administrator

Assistant Chief, Division of
Cadastral Engineering

Resurvey of a portion of the south boundary and a portion of the subdivisional lines executed by Marvin J. Lytle and Palmer Norseth, May 14 to August 20, 1952, under Special Instructions for Group 298, Oregon, dated March 27, 1951.