

THIS PLAT REPRESENTS THE ENTIRE RECORD OF THE DEPENDENT RESURVEY

OFFICIALLY FILED: 7/11/2022

FILED ORIGINAL

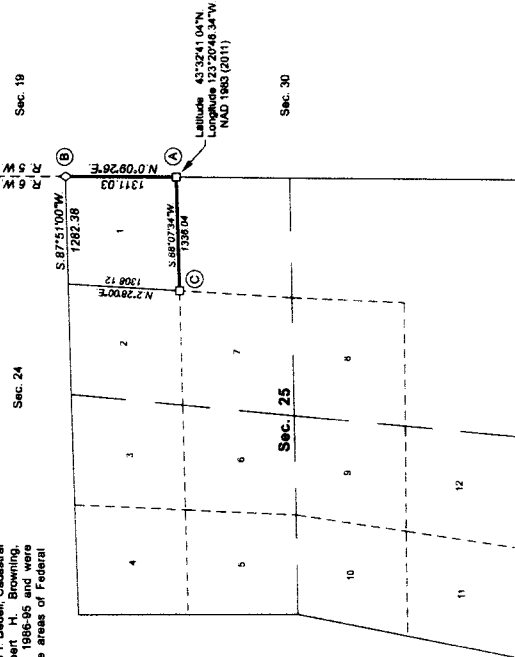
Date: 8/20/2022 By: J.E.
This survey complies with
Map PLAT 124S 022S 07
VOL. 59 PDS 24036
Corner-Right-Left-Right-Left-Right

DOUGLAS COUNTY
SURVEYOR

TOWNSHIP 23 SOUTH, RANGE 6 WEST, OF THE WILLAMETTE MERIDIAN, OREGON

DEPENDENT RESURVEY

NOTE: The lightweight lines with bearings and distances shown in section 25 were surveyed by Wayne L. Rogers, Boyd W. Peterson, Philip G. Griffin, and Dale T. Bedell, Cadastral Surveying Technicians in 1986-95 and were utilized to calculate the areas of Federal interest land.



The history of official surveys pertaining to this survey is as follows:

In 1853, Robert Elder and Henry S. Gile, U.S. Deputy Surveyors, surveyed the east boundary of the township, as shown on the accompanying plat of survey for T. 23 S., R. 5 W., approved June 30, 1855.

In 1878, William Thiel, U.S. Deputy Surveyor, surveyed a portion of the subdivision lines as shown on the official plat of survey approved April 2, 1879.

In 1883, John A. McMunn, U.S. Deputy Surveyor, the official plat of survey approved April 7, 1884, and accepted May 8, 1884.

In 1943-57, Otis O. Gould, Cadastral Engineer, and Joseph S. Gawron and Orville N. Eggen, Cadastral Surveyors, independently resurveyed the east boundary and subdivision lines, as shown on the official plat of survey approved September 22, 1953, suspended November 23, 1958.

In 1986-95, Wayne L. Rogers, Boyd W. Peterson, Philip G. Griffin, and Dale T. Bedell, Cadastral Surveyors, and Robert H. Browning, Surveying Technician, resurveyed the east boundary and subdivision lines and subdivision section 25, as shown on the official plat of survey accepted October 17, 1995.

In 2010, A. Bert Skeelsick, Cadastral Surveyor, recovered the corner of sections 19, 24, 25, and 30 on the east boundary of the township, as shown on the accompanying plat of survey for T. 23 S., R. 5 W., accepted November 16, 2011.

(A) The N 1/16 sec. cor. of secs. 25 and 30, reported by Rogers, Peterson, Griffin, Bedell, and Browning in 1986-95, monumented with a stainless steel post, 2 1/2 ins. diam., firmly set, with top 6 ins. below surface of road, with a brass cap mtd.

N 1/16 S 25 | S 30 1986

From which the bearing trees reported by Rogers, Peterson, Griffin, Bedell, and Browning

A fir, 25 ins. diam., bears S. 18° E., 194.0 ft. dist., with a heated double blaze (Record, S. 16° E., 192.7 ft. dist.)

A fir, 33 ins. diam., bears N. 55 3/4° W., 95.0 ft. dist., with a heated blaze (Record, N. 55° W.)

Corner is located in center of overgrown dirt road, 12 ft. wide, bears N. 50° W. and S. 30° E.

i. Jeffrey O. Covington, Cadastral Surveyor, HEREBY CERTIFY upon honor, that a special instruction bearing the appropriate date of the day of October 2018, I have independently resurveyed portions of the east boundary and subdivision lines of section 25, Township 23 South, Range 6 West, Willamette Meridian, Oregon, which is represented upon this plat as having been executed by me and under my direction, and that said survey has been made in strict conformity with said special instructions, the Manual of Surveying Instructions, and in the specific manner described on this plat.

Signature: Jeffrey O. Covington, Chief Cadastral Surveyor of Oregon, Date: April 26, 2022

(B) The cor. of secs. 19, 24, 25 and 30, reported by Skeelsick in 2010, perpetuated by persons) unknown, monumented with an iron post, 2 ins. diam., firmly set, projecting 12 ins. above ground, with a brass cap mtd.

T. 23 S. R. 6 W. S. 5 W. S 24 | S 19 1943 S 25 | S 30

From which the remains of the bearing trees reported by Skeelsick

A fir, 11 ins. diam., bears N. 78 1/2° E., 25.1 ft. dist., with a heated blaze.

A rootstock bears S. 51 1/2° E., 37.0 ft. dist., alongside of which is a down fir, 19 ins. diam., with a heated blaze

A fir stump, 41 ins. diam., bears S. 28° E., 93.1 ft. dist., with no marks visible on open blaze. (Original)

A fir snag, 85 ins. diam., bears S. 65 1/2° W., 68.6 ft. dist., with a heated blaze. (Original)

A maple, 16 ins. diam., bears N. 44° W., 26.1 ft. dist., with scribe marks BT visible on partially heated blaze

and a bearing tree mtd. by person(s) unknown

A fir, 34 ins. diam., bears S. 6° W., 7.0 ft. dist., with a heated blaze, and with scribe marks BT visible on bark.

and a new bearing tree

A maple, 8 ins. diam., bears S. 82 3/4° E., 43.2 ft. dist., mtd. T24S R6W S30 BT

(C) The NE 1/16 sec. cor. of sec. 25, reported by Rogers, Peterson, Griffin, Bedell, and Browning in 1986-95, monumented with a stainless steel post, 2 1/2 ins. diam., firmly set, projecting 4 ins. above ground, with a brass cap mtd.

NE 1/16 S 25 1986

from which the remains of the bearing tree reported by Rogers, Peterson, Griffin, Bedell, and Browning

A cedar snag, 10 ins. diam., bears S. 23° W., 39.6 ft. dist., with a heated double blaze, and new bearing trees

A cedar, 14 ins. diam., bears N. 26° E., 66.6 ft. dist., mtd. NE1/16 S25 BT

A white fir, 8 ins. diam., bears S. 23° E., 28.4 ft. dist., mtd. NE1/16 S25 BT.

LEGEND

- Original corner previously monumented
Corner previously established or reestablished

Table with columns: LEGAL SUBDIVISION, OFFICIAL ACRES, SECTION 25, LOT 1, TOTAL AREA, FEDERAL INTEREST LAND RESURVEYED. Values include 39.31 and 39.31.

UNITED STATES DEPARTMENT OF THE INTERIOR
BUREAU OF LAND MANAGEMENT

Portland, Oregon

The survey represented by this plat, having been correctly executed in accordance with the requirements of law and the regulations of this Bureau, is hereby accepted.

Signature: Mary M. Harts, Chief Cadastral Surveyor of Oregon

Date: April 26, 2022

Date