

THIS PLAT (PGS 24033-24035) REPRESENTS THE ENTIRE RECORD OF THE DEPENDENT RESURVEY

OFFICIALLY FILED: 7/21/2022

ORIGINAL

SHEET 1 OF 3

TOWNSHIP 23 SOUTH, RANGE 5 WEST, OF THE WILLAMETTE MERIDIAN, OREGON  
DEPENDENT RESURVEY AND SUBDIVISION OF SECTION 17

FILED PG 10  
Date: 4/26/2022, BY: JC  
This survey consists of:  
Map PLAT: 24033-24035  
VOL. 59 P.55 24033-24035  
Cadastral-Right-Adjustment-PLS No. 52989

DOUGLAS COUNTY  
SURVEYOR

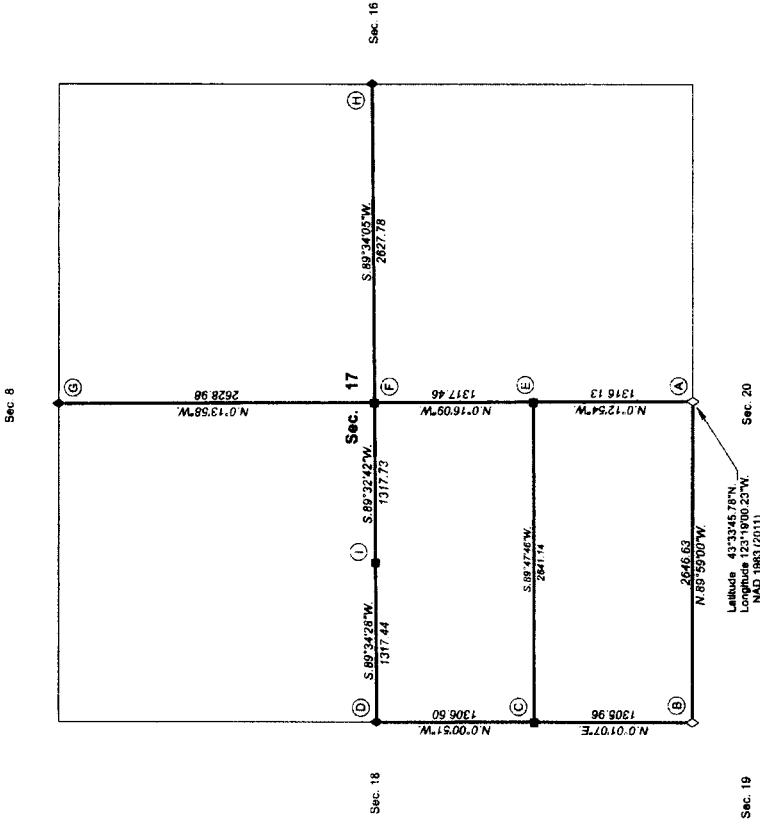
The history of official surveys pertaining to this survey is as follows:

In 1853, Robert Elder and Henry S. Ellis, U.S. Deputy Surveyors, surveyed the subdivision lines, as shown on the official plat of survey approved June 30, 1853.

In 2010, A. Bert Steasack, Cadastral Surveyor, resurveyed a portion of the subdivision lines and subdivided section 19, as shown on the official plat of survey accepted November 16, 2011.

The following map files (M), county surveyor files (CS), and partition plat, filed in the Douglas County Surveyor's Office, are referenced by surveyor's last name, official title or Professional Land Surveyor (PLS) No., and year:

Date	Name and Registration Number	File Number
1859	James W. Byron	CS48/42
1986	Douglas County Deputy Surveyor	CS54/16-57A
1986	Douglas County Surveyor's Office	CS63/67-3
1988	Robert G. Dean, PLS No. 1806	M107-61
1989	Larry E. Monrean, PLS No. 1830	CS62/63-5C
1983	Ken W. Hoffine, PLS No. 2291	M117-72
2003	David E. Edwards, PLS No. 2338	M141-60
2007	F. Neil Hibbs, PLS No. 52989	Partition Plat 2007-0169 A-C



LEGAL SUBDIVISION	OFFICIAL ACRES
SECTION 17	36.79
SW1/4 SW1/4	38.87
SE1/4 SW1/4	38.87
TOTAL AREA	79.57
FEDERAL INTEREST LAND RESERVE	

**LEGEND**

- ◇ Original corner previously remonumented
- ◆ Original corner remonumented this survey
- Corner previously established or reestablished; remonumented this survey

UNITED STATES DEPARTMENT OF THE INTERIOR  
BUREAU OF LAND MANAGEMENT

Portland, Oregon

The survey represented by this plat, having been correctly executed in accordance with the requirements of law and the regulations of this Bureau, is hereby accepted

For the Director

*Mary J. M. Heald*  
Chief Cadastral Surveyor of Oregon

April 26, 2022

Date

I, Jeffrey O. Covington, Cadastral Surveyor, HEREBY CERTIFY upon honor, that in pursuance of special instructions bearing the approval date of the 7th day of October, 2019, and the assignment instructions bearing the date of the 7th day of October, 2019, I have dependently resurveyed a portion of the subdivision lines and subdivided section 17, Township 23 South, Range 5 West, Willamette Meridian, Oregon, which is shown on the attached plat as resurveyed. This survey was conducted in accordance with the Manual of Surveying Instructions, which has been made in strict conformity with said special instructions, the Manual of Surveying Instructions, and in the specific manner described on this plat. (Jeffrey O. Covington was not available for signature.)

April 26, 2022

Date

*Jeffrey O. Covington*  
Chief Cadastral Surveyor of Oregon



TOWNSHIP 23 SOUTH, RANGE 5 WEST, OF THE WILLAMETTE MERIDIAN, OREGON  
DEPENDENT RESURVEY AND SUBDIVISION OF SECTION 17

(A) The 1/4 sec. cor. of secs. 17 and 20, perpetuated by Byron, Douglas County Deputy Surveyor, in 1856; subsequently perpetuated by person(s) unknown, monumented with an iron post, 1 1/4 ins. diam., firmly set, projecting 8 ins. above ground, with a brass cap mkt.

COUNTY SURVEYORS OFFICE  
T 23 S R 5 W  
S 17  
1/4  
S 20  
1959

from which the remains of an original bearing tree

A. decayed fir stump, 30 ins. diam., bears N. 20° E., 68.6 ft. dist., with scribe marks 1/4 BT visible on open blaze.

and the remains of the bearing trees mkt. by Byron  
A. decayed fir stump, 22 ins. diam., bears S. 52° W., 45.0 ft. dist., with a healed double blaze.

A. broken, decayed fir stump, 24 ins. diam., bears N. 2° W., 97.7 ft. dist., alongside of which is a down decayed fir trunk, no marks visible and the remains of a bearing tree mkt. by person(s) unknown

A. fir stump, 16 ins. diam., bears N. 1° E., 25.8 ft. dist., with a healed blaze.

and new bearing trees

A. fir, 6 ins. diam., bears S. 18 1/4° W., 23.5 ft. dist., mkt. 1/4 S17 BT

A. fir, 11 ins. diam., bears N. 6° W., 24.9 ft. dist., mkt. 1/4 S17 BT

From the corner

W., 105 ft. dist., spur, slopes S. 10° E.

(B) The cor. of secs. 17, 18, 19, and 20, reported by Skeelsick in 2010, monumented with a stainless steel post, 2 1/2 ins. diam., firmly set, projecting 14 ins. above ground, with a brass cap mkt.

T 23 S R 5 W  
S 18 | S 17  
S 19 | S 20  
2010

from which the remains of the bearing trees reported by Skeelsick

A. fir, 30 ins. diam., bears N. 37° E., 14.0 ft. dist., with a healed blaze.

A. fir, 26 ins. diam., bears S. 35° E., 26.2 ft. dist., with axe marks visible on bark.

A. fir snag, 56 ins. diam., bears S. 84 1/4° W., 35.0 ft. dist., with a healed blaze.

A. fir, 6 ins. diam., bears N. 71 1/2° W., 10.8 ft. dist., with scribe marks X BT visible on partially healed double blaze.

A. decayed fir snag, size indeterminate, bears N. 14° W., 7.3 ft. dist., with scribe marks T23S visible on open blaze. (Original)

and a new bearing tree

A. fir, 25 ins. diam., bears S. 63 1/2° W., 19.5 ft. dist., mkt. T23S R5W S18 BT on bark.

From the corner

E., 105 ft. dist., spur, slopes N. 20° E.

N., 115 ft. dist., draw, drains N. 25° E.

A search was made for the original line tree on the north half of the south half of the section line between sections 17 and 18, and none were recovered.

(C) The S 1/16 sec. cor. of secs. 17 and 18, established by Edwards, PLS No. 2339, in 2003, and is accepted as the cor.; monumented with an iron rod, 5/8 in. diam., firmly set, projecting 3 ins. above ground, with a red plastic cap mkt. D.A. Edwards L.S. 2338, from which the bearing trees mkt. by Edwards

A. fir, 18 ins. diam., bears S. 42° E., 25.3 ft. dist., with a healed blaze

A. fir, 17 ins. diam., bears N. 21° W., 14.6 ft. dist., with a healed blaze.

At the corner point

Set a stainless steel post, 28 ins. long, 2 1/2 ins. diam., 23 ins. in the ground, directly over the iron rod, with brass cap mkt.

S 1/16  
S 18 | S 17  
2019

From the corner

N., 21 ft. dist., a down woven and barbed wire fence line, bears E. and W.

(D) The 1/4 sec. cor. of secs. 17 and 19, perpetuated by Hoffine, PLS No. 2291, in 1983, and is accepted as the cor.; monumented with an iron rod, 5/8 in. diam., firmly set, projecting 5 ins. above ground, with an aluminum cap mkt. LONE ROCK TIMBER T23S R5W 1/4 S18 | S17 1983 PLS 2291, from which the remains of an original bearing tree

A. decayed fir stump, size indeterminate, bears N. 31° W., 55.4 ft. dist., no marks visible, and the remains of the bearing trees mkt. by Hoffine

A. decayed fir stump, 15 ins. diam., bears N. 5° E., 23.5 ft. dist., with a hollowed blaze.

A. decayed fir stump, 25 ins. diam., bears N. 84 1/2° E., 38.4 ft. dist., with scribe marks 4 S17 BT visible on open blaze

A. fir, 26 ins. diam., bears S. 38 1/4° W., 9.1 ft. dist., with a healed blaze.

At the corner point

Set a stainless steel post, 28 ins. long, 2 1/2 ins. diam., 23 ins. in the ground, directly over the iron rod, with brass cap mkt

T 23 S R 5 W  
S 18 | S 17  
2019

and new bearing trees

A. fir, 6 ins. diam., bears N. 44 1/4° E., 7.1 ft. dist., mkt. 1/4 S17 BT

A. fir, 5 ins. diam., bears N. 11 3/4° W., 8.9 ft. dist., mkt. 1/4 S18 BT

From this cor., a point established by person(s) unknown, reported by Douglas County Surveyor's Office, in 1985, for unknown purpose, and was not subject to control in this survey; bears S. 86° 15' 13" E., 6.6 ft. dist., monumented with an iron rod, 5/8 in. diam., firmly set, with top 8 ins. below the surface of the ground

Corner is located at the cor. of a woven and barbed wire fence line, bears S. and W.

(E) The center, S 1/16 sec. cor. of sec. 17, established by Edwards, PLS No. 2339, in 2003, and is accepted as the cor.; monumented with an iron rod, 5/8 in. diam., firmly set, projecting 3 ins. above ground, with a red plastic cap mkt. D.A. Edwards L.S. 2338, from which the bearing trees mkt. by Edwards

A. fir, 10 ins. diam., bears N. 33° E., 11.0 ft. dist., with a healed blaze.

A. fir, 7 ins. diam., bears N. 46 3/4° E., 10.2 ft. dist., with a healed blaze

At the corner point

Set a stainless steel post, 28 ins. long, 2 1/2 ins. diam., 23 ins. in the ground, directly over the iron rod, with brass cap mkt

S 1/16 | S 17  
C  
C  
2019

and a new bearing tree

A. fir, 8 ins. diam., bears S. 41° E., 21.4 ft. dist., mkt. CS116 S17 BT

(F) The center 1/4 sec. cor. of sec. 17, established by Hibbs, PLS No. 52989, in 2007, and is accepted as the cor.; monumented with an iron rod, 5/8 in. diam., firmly set, projecting 4 ins. above ground, with a yellow plastic cap mkt. HIBBS LS 52989, from which the bearing trees mkt. by Hibbs

A. fir, 18 ins. diam., bears N. 81 1/2° E., 82.5 ft. dist., with a healed blaze.

A. fir, 14 ins. diam., bears S. 48° E., 42.6 ft. dist., with a healed blaze.

A. maple, 36 ins. diam., bears S. 47 3/4° W., 24.7 ft. dist., with scribe marks 4 S17 B visible on partially healed blaze

A. fir, 13 ins. diam., bears N. 32 3/4° W., 92.0 ft. dist., with a healed blaze.

At the corner point

Set a stainless steel post, 28 ins. long, 2 1/2 ins. diam., 24 ins. in the ground, directly over the iron rod, with brass cap mkt

T 23 S R 5 W  
C 1/4 S 17  
2019

FILED PG 29  
Date: 7/21/2022 By: JC  
This survey consists of:  
Map: PLAT: T23-S 2022-1  
VOL. 98 PGS. 24033-24035  
Computer: PLAT: T23-S 2022-1  
DOUGLAS COUNTY  
SURVEYOR

UNITED STATES DEPARTMENT OF THE INTERIOR  
BUREAU OF LAND MANAGEMENT

Portland, Oregon

The survey represented by this plat, having been correctly executed in accordance with the requirements of law and the regulations of this Bureau, is hereby accepted

For the Director

Mary J. M. Hurd

Chief Cadastral Surveyor of Oregon

April 26, 2022

Date

THIS PLAT (PGS 24033-24035) REPRESENTS THE ENTIRE RECORD OF THE DEPENDENT RESURVEY

7/21/2022 OFFICIALLY FILED

ORIGINAL

TOWNSHIP 23 SOUTH, RANGE 5 WEST, OF THE WILLAMETTE MERIDIAN, OREGON

SHEET 3 OF 3

DEPENDENT RESURVEY AND SUBDIVISION OF SECTION 17

FILED PG 33  
Date: 02/29/22 By: JC  
This survey consists of  
Map PLAT: 24033-24035  
VOL. 08 PGS: 24033-24035  
County: Douglas  
SURVEYOR

(1) The center W 1/16 sec. cor. of sec. 17, established by Holme, PLS No. 2281, in 1993, and is monumented with an iron rod, 6 ins. above ground, with an aluminum cap mtd. LONE ROCK TIMBER W 1/16 C-C S17 1993 PLS 2281, from which the remains of the bearing trees mtd. by Holme

(4) The 1/4 sec. cor. of secs. 16 and 17, perpetuated by person(s) whose identity is not known, as surveyed by Byron Douglas County Deputy Surveyor, in 1959, from original evidence no longer in existence, monumented with an iron axle shaft, 1 1/2 ins. diam., firmly set, projecting 4 ins. above ground, from which the remains of the bearing trees mtd. by Byron

(6) The 1/4 sec. cor. of secs. 8 and 17, perpetuated by Dean, PLS No. 1603, in 1989; subsequently perpetuated by Monahan, PLS No. 1630, in 1989; from original evidence no longer in existence, monumented with an iron rod, 3/4 in. diam., firmly set, projecting 6 ins. above ground, with brass cap mtd. LS 1603, from which the remains of the bearing trees mtd. by Monahan

A. decayed fir stump, 16 ins. diam., bears N. 44 1/2° W., 57.8 ft. dist., with a healed blaze.  
A. decayed fir stump, 15 ins. diam., bears N. 54 3/4° W., 20.8 ft. dist., with scribe marks W 1/16 S17 BT visible on partially healed blaze.  
At the corner point  
Set a stainless steel post, 28 ins. long, 2 1/2 ins. diam., 27 ins. in the ground, directly over the iron rod, with brass cap mtd.

A. decayed fir stump, 25 ins. diam., bears N. 63 1/4° E., 112.7 ft. dist., with a healed blaze.  
A. fir, 22 ins. diam., bears N. 55 1/4° W., 95.9 ft. dist., with a healed double blaze.  
At the corner point  
Set a stainless steel post, 28 ins. long, 2 1/2 ins. diam., 22 ins. in the ground, directly over the iron axle shaft, with brass cap mtd.

A. decayed fir stump, 12 ins. diam., bears S. 32 1/2° E., 17.6 ft. dist., no marks visible.  
A. decayed fir stump, 10 ins. diam., bears S. 48° W., 27.5 ft. dist., with a hollow blaze.  
A. chinquapin, 14 ins. diam., bears N. 33 1/2° W., 22.0 ft. dist., with no marks visible on partially healed blaze. Tree apparently regrown on NW BT  
At the corner point  
Set a stainless steel post, 28 ins. long, 2 1/2 ins. diam., 23 ins. in the ground, directly over the iron rod, with brass cap mtd.

C W 1/16 C  
S 17  
2019  
and new bearing trees  
A fir, 6 ins. diam., bears N. 71° E., 9.3 ft. dist., mtd. CW1/16 S17 BT.  
A fir, 5 ins. diam., bears N. 50° W., 8.6 ft. dist., mtd. X BT.

T 23 S R 5 W  
S 17  
1/16  
2019  
and a new bearing tree  
An oak, 6 ins. diam., bears N. 57 3/4° E., 33.2 ft. dist., mtd. 1/4 S16 BT on bark.

T 23 S R 5 W  
S 8  
1/4 S 17  
2019  
and a new bearing tree  
A fir, 4 ins. diam., bears S. 40° W., 6.5 ft. dist., mtd. X BT.  
Corner is located W. 40 ft. dist. of a ravine, drains N. 15° W.

UNITED STATES DEPARTMENT OF THE INTERIOR  
BUREAU OF LAND MANAGEMENT  
Portland, Oregon

The survey represented by this plat, having been correctly executed in accordance with the requirements of law and the regulations of this Bureau, is hereby accepted.

For the Director  
Mary M. Heath  
Chief Cadastral Surveyor of Oregon

April 26, 2022  
Date