

THIS PLAT REPRESENTS THE ENTIRE RECORD OF THE DEPENDENT RESURVEY

OFFICIALLY FILED: 1/14/2022

TOWNSHIP 26 SOUTH, RANGE 3 WEST, OF THE WILLAMETTE MERIDIAN, OREGON

SHEET 1 OF 3

DEPENDENT RESURVEY

This plat constitutes the entire record of the dependent resurvey of a portion of the subdivision lines, including the original locations according to the best available evidence, Township 26 South, Range 3 West, Willamette Meridian, Oregon.

The history of official surveys pertaining to this survey is on Sheet 2 and Sheet 3.

The directions of the lines are based on the true meridian as determined by Global Positioning Systems (GPS) techniques and carried forward by sustained angulation using conventional survey techniques. All measurements along the lines were derived through the use of GPS and conventional survey techniques. Measured distances and directions have been adjusted by computer software that incorporates a least squares adjustment to the adjusted mean bearings and distances. Horizontal and vertical distances are reported to the nearest second and 0.01 foot.

The lotings and areas are as shown on the plat approved March 27, 1879 and October 23, 1892.

Preliminary to the resurvey, the lines of the official original resurvey were retraced and a search was made for all the original corners and monuments where available, collateral evidence of local surveys and corners. Identified corners were perpetuated in their original positions. The retracement data was thoroughly verified and only the true line field data are given herein.

A magnet in a white plastic case was deposited at the survey station post, and each monument bearing lines has a 1/2 inch 1/4 inch (M) metal marker driven at the base on right side center, unless otherwise noted in the corner description. Only those lines bounding Federal interest land were blazed.

The geographic positions shown herein were determined by ties from temporary GPS control points utilizing dual frequency, real-time kinematic (RTK) GPS receivers, and processed using the National Geospatial Survey's Online Positioning User Service (OPUS).

The survey was executed in accordance with the specifications set forth in the Manual of Surveying Instructions (2009), and the special instructions approved August 12, 2019, for Group No. 2953, Oregon. By Jeffrey O. Covington, Cadastral Surveyor, beginning September 23, 2021, to October 19, 2021. The survey was assisted by Robert NMI Dumbauld, S. Surveyor, Ryan K. Baikum, and Jason P. Gaudreau, Surveying Technicians.

LEGEND

- ◇ Original corner previously remonumented
- ◆ Original corner remonumented this survey
- Corner previously reestablished
- Corner previously reestablished; remonumented this survey

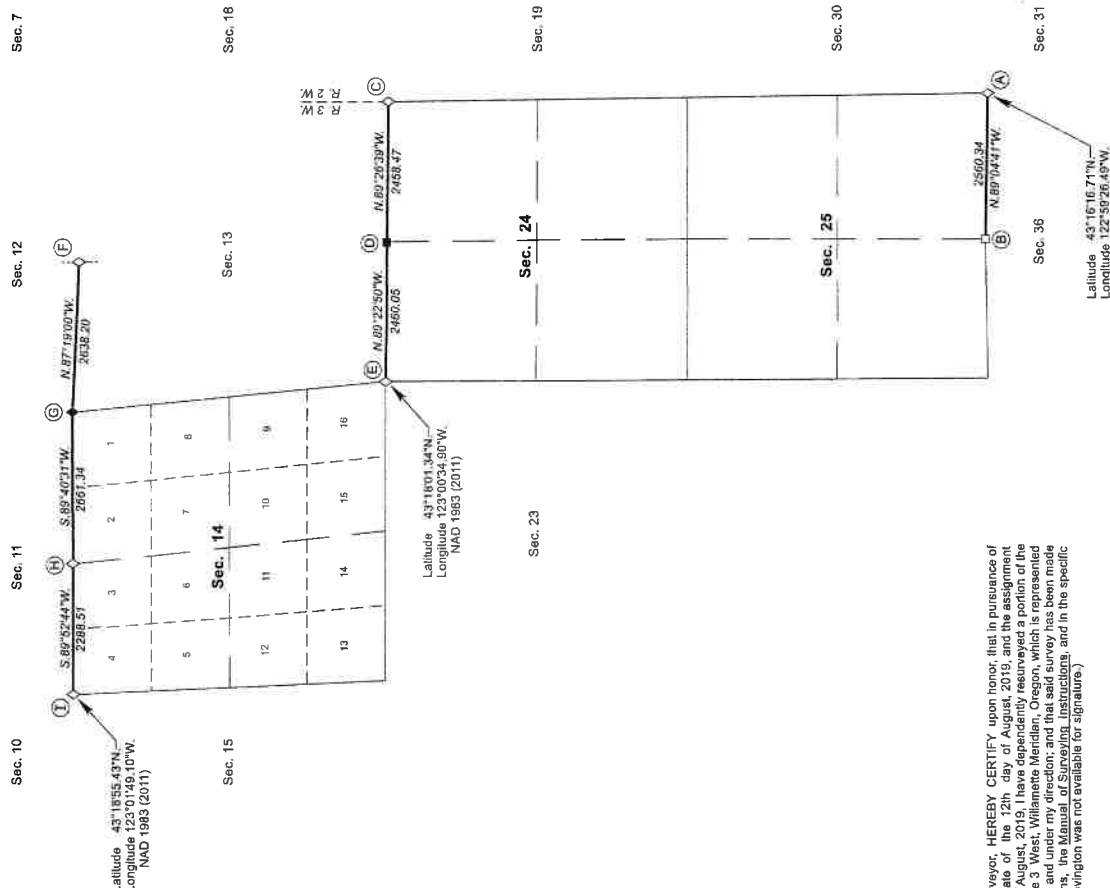
UNITED STATES DEPARTMENT OF THE INTERIOR
BUREAU OF LAND MANAGEMENT

Portland, Oregon

The survey represented by this plat, having been correctly executed in accordance with the requirements of law and the regulations of this Bureau, is hereby accepted.

For the Director
Mary J. M. Hest
Chief Cadastral Surveyor of Oregon

October 19, 2021
Date



Latitude 43° 16' 16.71\"/>

Latitude 43° 16' 16.71\"/>

I, JEFFREY O. COVINGTON, Cadastral Surveyor, HEREBY CERTIFY, upon honor, that in pursuance of special instructions bearing the approval date of the 12th day of August, 2019, and the assignment bearing the date of August 12, 2019, I have personally resurveyed a portion of the subdivision lines of Township 26 South, Range 3 West, Willamette Meridian, Oregon, which is depicted upon this plat as having been executed by me and under my direction; and that said survey has been made in strict conformity with said special instructions, the Manual of Surveying Instructions, and in the specific manner described on this plat. (Jeffrey O. Covington was not available for signature.)

Mary J. M. Hest
Chief Cadastral Surveyor of Oregon

October 19, 2021
Date



Date: 3/3/2022 By: JC
This survey consists of:
Map: PLAT: 2386-3 2021-1
VOL: 59 PGS: 2386-2398
County: Douglas County, Oregon

DOUGLAS COUNTY SURVEYOR

(A) The cor. of secs. 25, 30, 31, and 36, on the E. body of the Tp. 16S, R. 12E, containing an iron post, monumented with an iron post, 1 1/4 ins. diam., firmly set, projecting 12 ins. above ground, with a brass cap mkd.

COUNTY SURVEYORS OFFICE

T26 S
R S 25 S 30 R
S 31
W S 36 S 31 W
1986

from which the remains of the bearing trees reported by Rogers

A fir, 41 ins. diam., bears S. 45° E., 21.8 ft. dist., with a healed blaze. (Original)
A fir, 13 ins. diam., bears S. 37 1/2° W., 7.6 ft. dist., with a healed blaze.

A fir, 13 ins. diam., bears N. 7° W., 16.5 ft. dist., with a healed blaze.

and the remains of a bearing tree mkd. by Geisler

A fir snag, 5 ins. diam., bears N. 72° E., 23.3 ft. dist., with scribe marks T26S R2W S30 visible on partially healed blaze.

and a new bearing tree

A fir, 12 ins. diam., bears N. 77° E., 37.7 ft. dist., mkd. T26S R2W S30 BT.

(B) The 1/4 sec. cor. of secs. 25 and 36, reported by Rogers in 1981; and perpetuated by Monnean, PLS No. 1830, in 1992; monumented with an iron post, 2 1/2 ins. diam., firmly set, projecting 4 ins. above ground, with a brass cap mkd.

T 26 S R 3 W
S 25
1/4
S 36
1981

from which the remains of a bearing tree reported by Rogers

A roothole bears N. 51° W., 11.6 ft. dist., alongside of which is a down fir trunk, 37 ins. diam., with scribe marks 1/4 S25 BT visible on partially healed blaze.

and the remains of the bearing trees mkd. by Monnean

A cedar, 20 ins. diam., bears N. 48 1/4° E., 36.6 ft. dist., with a healed blaze.

A fir, 16 ins. diam., bears S. 79 3/4° W., 10.4 ft. dist., with a healed blaze

A cedar snag, 7 ins. diam., bears N. 45° W., 37.7 ft. dist., with scribe marks BT visible on partially healed blaze.

DEPENDENT RESURVEY

(C) The cor. of secs. 13, 18, 19, and 24, on the E. body of the Tp. 16S, R. 12E, containing an iron post, monumented with an iron post, 1 1/4 ins. diam., firmly set, in a rock outcrop, projecting 6 ins. above ground, with a brass cap mkd.

T 26 S
R S 13 S 18 R
S 19
W S 24 S 18 W
1985

from which the accessories reported by Herzberg

A fir, 16 ins. diam., bears N. 46 1/2° E., 113.3 ft. dist., with a healed blaze.

An iron post, 2 ins. diam., firmly set, projecting 2 ins. above ground, in a collar of stone, bears S. 0° 32' E., 57.5 ft. dist., with a brass cap mkd. W.C. T26S R3W S13 S18 R2W S24 S19 1980 LS 5386

A rock cut bank, 15 ft. high, bears S. 8° 50' 37" W., 36.30 ft. dist., to a Mag-Nail driven in crack, with marks BO chiseled in the rock face, 3 ft. high up the rock face.

A fir, 11 ins. diam., bears N. 32° W., 54.3 ft. dist., with a healed blaze.

From the corner, N. 89° 26' 39" W.;

145 ft. dist., gravelled road, 10 ft. wide, bears N. 55° E. and S. 45° W.

2405 ft. dist., gravelled road, 18 ft. wide, bears N. 20° E. and S. 50° W.

(D) The 1/4 sec. cor. of secs. 13 and 24, reestablished by proportional measurement by Wilson, Washington State PE No. 2526, in 1965; and perpetuated by mkd., PLS No. 2489, in 2011. There is no evidence of the original monumentation. This plat is intended as a careful and faithful reestablishment of the cor.; monumented with an aluminum pipe, 1 1/4 ins. diam., firmly set, projecting 6 ins. above ground, from which the remains of the bearing trees mkd. by Calder PE No. 2149, in 1952, reported by Wilson

A decayed fir stump, 36 ins. diam., bears N. 34 1/2° W., 27.0 ft. dist., no marks visible.

A decayed cedar stump, 44 ins. diam., bears N. 82 3/4° E., 35.3 ft. dist., no marks visible.

and the bearing trees mkd. by Smith

A fir, 6 ins. diam., bears N. 47 1/2° E., 14.1 ft. dist., with a healed blaze.

A hemlock, 17 ins. diam., bears S. 43° E., 4.9 ft. dist., with scribe marks 1/4 S14 CS BT visible on partially healed blaze.

A fir, 9 ins. diam., bears S. 56 3/4° W., 13.3 ft. dist., with a healed blaze.

A fir, 20 ins. diam., bears N. 11 1/4° W., 18.9 ft. dist., with a healed blaze.

At the corner point

Set a stainless steel post, 28 ins. long, 2 1/2 ins. diam., 26 ins. in the ground, directly over the aluminum pipe, with brass cap mkd.

T 26 S R 3 W
S 13
1/4
S 24
2019

From this cor. a point established as the 1/4 sec. cor. of secs. 13 and 24, by Calder, subsequently rejected by Wilson, and was not utilized for control in this survey, bears S. 15° 23' 53" W., 1.89 ft. dist.; as determined at Calder's record bearings and distances from the remains of the bearing trees reported by Wilson.

From the corner, N. 85° 22' 50" W.;

765 ft. dist., spur, slopes N. 40° E.

2035 ft. dist., creek, 2 ft. wide, course N. 20° W.

2440 ft. dist., creek, 2 ft. wide, course N. 30° E.

OWNSHIP 26 SOUTH, RANGE 3 WEST, OF THE WILLAMETTE MERIDIAN, OREGON

The history of official surveys pertaining to this survey is as follows on Sheet 2 and Sheet 3:

In 1855, Addison R. Flint, U.S. Deputy Surveyor, surveyed the east boundary, as shown on the official plat of survey approved December 10, 1855.

In 1877, William H. Byers, U.S. Deputy Surveyor, surveyed a portion of the subdivisional lines, as shown on the official plat of survey approved September 11, 1877 (depicted on the 1855 Addison R. Flint plat).

In 1879, William H. Byers, U.S. Deputy Surveyor, surveyed a portion of the subdivisional lines as shown on the official plat of survey approved March 27, 1879 (depicted on the 1855 Addison R. Flint plat).

In 1882, Samuel C. Flint, U.S. Deputy Surveyor, surveyed a portion of the subdivisional lines, as shown on the official plat of survey approved October 23, 1882.

In 1883, John A. McQuinn, U.S. Deputy Surveyor, surveyed a portion of the subdivisional lines of T. 26 S., R. 2 W., as shown on the official plat of survey for T. 26 S., R. 2 W., approved April 7, 1884.

In 1909-1910, William N. Gibb, U.S. Deputy Surveyor, reestablished a portion of the east boundary, as shown on the official plat of survey for T. 26 S., R. 2 W., approved October 17, 1911.

In 1913-14, Charles M. Collier, U.S. Surveyor, reestablished portions of the east boundary, as shown on the official plat of survey for T. 26 S., R. 2 W., approved June 27, 1917.

In 1916, Fred Menach, reestablished a portion of the east boundary, as shown on the official plat of survey for T. 26 S., R. 2 W., approved January 4, 1919.

In 1922-63, C. Albert White, Cadastral Surveyor, and Donald R. Beck and Patrick J. Reynolds, Surveying Technicians, dependently resurveyed portions of the east boundary and subdivisional lines, as shown on the official plat of survey accepted November 13, 1924.

In 1951, Wayne L. Rogers, Cadastral Surveyor, dependently resurveyed a portion of the subdivisional lines, as shown on the official plat of survey accepted June 22, 1954.

In 1984, Larence J. Bishop and Weyna L. Rogers, Cadastral Surveyors, dependently resurveyed a portion of the subdivisional lines, as shown on the official plat of survey accepted June 27, 1986.

UNITED STATES DEPARTMENT OF THE INTERIOR
BUREAU OF LAND MANAGEMENT

Portland, Oregon

The survey represented by this plat, having been correctly executed in accordance with the requirements of law and the regulations of this Bureau, is hereby accepted.

For the Director
Mary J. M. Hunt
Chief Cadastral Surveyor of Oregon

October 19, 2021

Date

OFFICIALLY FILED: 1/14/2022

THIS PLAT REPRESENTS THE ENTIRE RECORD OF THE DEPENDENT RESURVEY

OFFICIALLY FILED: 1/14/2022

ORIGINAL

SHEET 3 OF 3

TOWNSHIP 26 SOUTH, RANGE 3 WEST, OF THE WILLAMETTE MERIDIAN, OREGON

DEPENDENT RESURVEY

(F) The 1/4 sec. cor. of secs. 12 and 13, perpetuated by Douglas County Surveyor's Office, in 1966; monumented with an iron post, 1 1/4 ins. diam., firmly set, projecting 8 ins. above ground, with a brass cap mkd.

COUNTY SURVEYORS OFFICE

T 26 S R 3 W S 12

1/4 S 13 R 3 W 1966

from which the remains of the original bearing trees with a healed blaze.

A fir stump, 49 ins. diam., bears N. 52° E., 31.0 ft. dist., with a healed blaze.

A lin-capped, sugar pine stump, 72 ins. diam., bears S. 20° E., 21.1 ft. dist., no marks visible.

and the remains of the bearing trees mkd. by the Douglas County Surveyor's Office

A fir snag, 9 ins. diam., bears S. 26 1/4° W., 9.3 ft. dist., with a healed blaze.

A fir, 24 ins. diam., bears N. 30 1/4° W., 15.0 ft. dist., with a healed blaze.

and a new bearing tree

A fir, 26 ins. diam., bears S. 49 1/2° W., 18.5 ft. dist., mkd. 1/4 S 13 BT.

(G) The cor. of secs. 11, 12, 13, and 14, perpetuated by Godfrey, Douglas County Deputy Surveyor, in 1964; subsequently perpetuated by Douglas County Surveyor's Office, in 1978; and further perpetuated by Schimnel, PLS No. 65372, in 2006; from original evidence no longer in existence, as determined at record bearing and distance from the witness corner established by Godfrey.

At the corner point:

Set an iron rod, 30 ins. long, 5/8 in. diam., 38 ins. in the ground, with aluminum cap mkd.

T 26 S R 3 W S 11 S 12 S 11 S 13 2019

from which new accessories

A fir, 18 ins. diam., bears N. 38 1/4° E., 48.1 ft. dist., mkd. T26S R3W S12 BT.

A cedar, 10 ins. diam., bears S. 16 1/4° E., 45.6 ft. dist., mkd. T26S R3W S13 BT.

An iron rod, 30 ins. long, 5/8 in. diam., set 29 ins. in the ground, for a reference monument, bears S. 11° 38' 30" W., 38.00 ft. dist., with aluminum cap mkd. RM T26S R3W S14 38.00 FT TO COR and an arrow pointing to the cor.

From this cor., a point established as a witness corner for the cor. of secs. 11, 12, 13, and 14, by Godfrey, bears West, 70.00 ft. dist.; and is accepted as a reference monument; monumented with an iron post, 1 1/4 ins. diam., firmly set, projecting 10 ins. above ground, with a brass cap mkd. COUNTY SURVEYORS OFFICE WC T26S R3W S11 S12 S13 S14 70 FT E. TO COR 1964; from which the remains of the bearing trees mkd. by Godfrey

A cedar, 32 ins. diam., bears N. 3 1/4° E., 35.2 ft. dist., with a healed blaze.

A cedar snag, 40 ins. diam., bears S. 77 1/2° E., 14.5 ft. dist., no marks visible.

A mesquite bears, S. 49° W., 35.3 ft. dist., alongside of which is a down cedar trunk, 40 ins. diam., no marks visible.

and a bearing tree mkd. by Douglas County Surveyor's Office

A cedar, 18 ins. diam., bears West, 42.5 ft. dist., with a healed blaze.

and a bearing tree mkd. by Schimnel

A hemlock, 15 ins. diam., bears S. 69 3/4° W., 16.0 ft. dist., with no marks visible on partially healed blaze.

At the request of the Douglas County Surveyor, change the monumented corner for the COUNTY SURVEYORS OFFICE RM T26S R3W S12 S13 S14 70 FT E. TO COR BLM 2019-1964 and an arrow pointing to the cor.

Corner is located S., 3 ft. dist. from the center line of a gravelled road, 20 ft. wide, bears S. 65° E. and N. 30° W.

(H) The 1/4 sec. cor. of secs. 11 and 14, perpetuated by Espalein, Douglas County Surveyor, in 1925; subsequently perpetuated by Godfrey, Douglas County Deputy Surveyor, in 1954; further perpetuated by Douglas County Surveyor's Office, in 1961; and further perpetuated by Schimnel, PLS No. 65372, in 2006; monumented with an iron post, 1 1/4 ins. diam., firmly set, projecting 6 ins. above ground, with a brass cap mkd.

COUNTY SURVEYORS OFFICE

T 26 S R 3 W S 11 R S 14 W 1964

1/4 S 14 W 1964

from which the remains of the original bearing trees

A fir stump, 69 ins. diam., bears N. 10° E., 11.9 ft. dist., no marks visible.

A fir stump, 49 ins. diam., bears S. 31 3/4° E., 13.2 ft. dist., no marks visible. (Record, S. 70° E.)

and the remains of the accessories mkd. by the Douglas County Surveyor's Office

A decayed fir stump, size indeterminate, bears S. 56 1/2° W., 27.4 ft. dist., no marks visible.

A decayed cedar stump, 10 ins. diam., bears N. 57 1/2° W., 68.3 ft. dist., no marks visible.

and the bearing trees mkd. by Schimnel

A fir, 10 ins. diam., bears N. 79 1/4° E., 6.8 ft. dist., with a healed blaze.

A fir, 13 ins. diam., bears S. 49 3/4° W., 6.8 ft. dist., with a healed blaze.

(I) The cor. of secs. 10, 11, 14, and 15, reported by Bishop and Rogers in 1964, monumented with an iron post, 1 1/4 ins. diam., firmly set, projecting 2 ins. above ground, with a brass cap mkd.

T 26 S R 3 W S 10 S 11 S 15 S 14 1962

from which the remains of the bearing trees reported by Bishop and Rogers

A decayed fir stump, 33 ins. diam., bears N. 32° E., 21.8 ft. dist., no marks visible.

A cedar, 33 ins. diam., bears N. 47° E., 72.6 ft. dist., with a healed blaze.

A fir, 38 ins. diam., bears S. 59° E., 43.6 ft. dist., with scribe marks S14 BT visible on bark.

A decayed yew stump, 18 ins. diam., bears S. 41° W., 19.1 ft. dist., alongside of which is a down yew trunk, 18 ins. diam., with no marks visible on hollowed blaze.

A fir, 35 ins. diam., bears S. 72° W., 7.3 ft. dist., no marks visible. (Original)

A fir stump, 41 ins. diam., bears N. 46° W., 19.2 ft. dist., with axe marks visible on bark. (Original)

and a bearing tree mkd. by person(s) unknown

A fir, 12 ins. diam., bears N. 9 1/4° E., 25.1 ft. dist., with a healed blaze.

and a new bearing tree

A fir, 13 ins. diam., bears N. 23° W., 37.4 ft. dist., mkd. T26S R3W S10 BT.

In 2009, A. Bert Skeenick, Cadastral Surveyor, and Robert H. Browning, Surveying Technician, amended the plat of survey by substituting the lines as shown on the official plat of survey accepted September 29, 2011.

In 2015, Joel R. Herzberg, Cadastral Surveyor, independently resurveyed a portion of the east boundary, as shown on the official plat of survey for T. 26 S., R. 2 W., accepted April 18, 2017.

The following local surveys (M) and equity surveyor files (CS) filed in the Douglas County Surveyor's Office are referred to in the subsequent corner descriptions and are referenced by surveyor's last name, official title, Professional Land Surveyor (PLS) No., or Professional Engineer (PE) No., and year.

Table with 4 columns: Date, Name and Registration Number, File Number. Rows include H.L. Espalein, Douglas County Surveyor; Lester E. Calder, Oregon Registered Logging Engineer; Milo E. Godfrey, Douglas County Deputy Surveyor; John W. Bishop, Washington State PE No. 2526; Douglas County Surveyor's Office; Douglas County Surveyor's Office; Douglas County Surveyor's Office; Douglas County Surveyor's Office; Ronald G. Geller, PLS No. 1988; Larry E. McNamee, PLS No. 1930; Kevin B. Schimnel, PLS No. 65372; Randall W. Smith, PLS No. 2469.

FILED

Date: 3/3/2022 By: JC This survey consists of: Map, PLAT: T26 S 2021-1 VOL 59 PGS 23986-23988 Correct-Right: WILLAMETTE MERIDIAN DOUGLAS COUNTY SURVEYOR

UNITED STATES DEPARTMENT OF THE INTERIOR BUREAU OF LAND MANAGEMENT

Portland, Oregon

The survey represented by this plat, having been correctly executed in accordance with the requirements of law and the regulations of this Bureau, is hereby accepted.

For the Director

Mary J. M. Axtell Chief Cadastral Surveyor of Oregon

October 19, 2021

Date