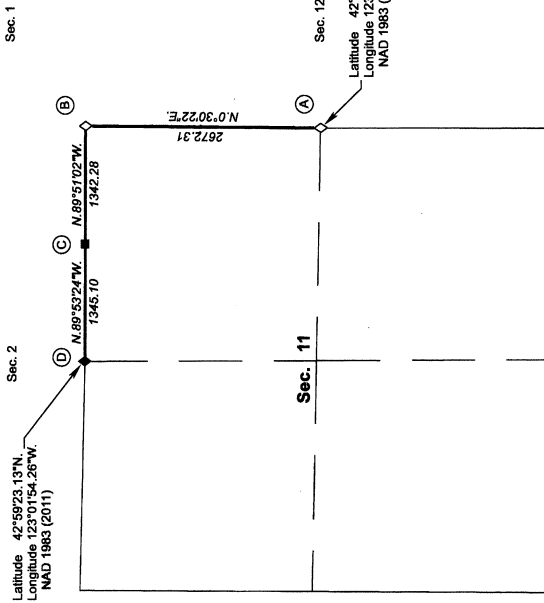


THIS PLAT REPRESENTS THE ENTIRE RECORD OF THE DEPENDENT RESURVEY

TOWNSHIP 30 SOUTH, RANGE 3 WEST, OF THE WILLAMETTE MERIDIAN, OREGON  
DEPENDENT RESURVEY

Date: 10/13/2020 By: JC  
This survey consists of:  
Map PLAT: 130-3 20201  
Narrative: VOL. 59 PG 23796-7  
General Reference INFORMATION IS ON THE PLAT  
DOUGLAS COUNTY  
SURVEYOR

OFFICIALLY FILED: 8/21/2020



This plat constitutes the entire record of the dependent resurvey of a portion of the subdivisional lines, designed to restore the corners in their true original locations according to the best available evidence, Township 30 South, Range 3 West, Willamette Meridian, Oregon.

The directions of the lines are based on the true meridian as determined by Charles Peckham Surveyor (GPS) techniques and carried forward by sustained triangulation using conventional survey techniques. All measurements along the lines were derived through the use of electronic measuring equipment. Measured distances and directions have been adjusted by computer software that incorporates a least squares adjustment routine. The adjusted mean bearings and mean horizontal ground elevation distances are reported to the nearest second and 0.01 foot.

The lodgings and areas are as shown on the plat approved June 28, 1895.

Preliminary to the resurvey, the lines of the official original survey and resurveys were retraced and search was made for all corners, lines, other calls of the record, and, where available, collateral evidence of local surveys and corners. Identified corners were perpetuated in their original positions. The retracement data was thoroughly verified and only the true line field notes are given herein.

Each new bearing tree has a 2 1/2 inch x 1/4 inch magnetic nail (Mag Nail) driven at the base on right side center, unless otherwise noted in the corner description. Aluminum angle irons were driven alongside each monument unless a similar marker was already in place.

Only those lines bounding Federal interest land were blazed.

The geographic positions shown herein were determined by ties from temporary GPS control points, established during the resurvey, and processed using the National Geospatial Survey's Online Positioning User Service (OPUS).

The survey was executed in accordance with the specifications set forth in the Manual of Surveying Instructions (2009), and the special instructions approved October 31, 2017, for Group No. 28896, Oregon, by Jeffrey O. Covington, Cadastral Surveyor, beginning on November 7, 2017, and completed on December 16, 2019. He was assisted by Robert NMI Durning, Surveying Technician.

LEGEND  
◇ Original corner previously remonumented  
◆ Original corner remonumented this survey  
■ Corner previously established or reestablished; remonumented this survey

UNITED STATES DEPARTMENT OF THE INTERIOR  
BUREAU OF LAND MANAGEMENT  
Portland, Oregon

The survey represented by this plat, having been correctly executed in accordance with the requirements of law and the regulations of this Bureau, is hereby accepted.

For the Director  
Mary J. M. Hovell  
Chief Cadastral Surveyor of Oregon

July 1, 2020  
Date

The history of the official surveys pertaining to this survey is as follows:

In 1893, William M. Bushey, U.S. Deputy Surveyor, surveyed a portion of the subdivisional lines, as shown on the official plat of survey approved June 23, 1895, and accepted December 27, 1895.

The following local surveys (M) and county surveyor file (CS), filed in the Douglas County Surveyor's Office are referred to in the subsequent corner descriptions and are referenced by surveyor's last name, official title, Professional Land Surveyor (PLS) No., and year.

Date	Name and Registration Number	File Number
1963	James W. Byron, Douglas County Deputy Surveyor	CS527138
1963	James W. Byron, Douglas County Deputy Surveyor	CS527138
1960	James W. Byron, Douglas County Deputy Surveyor	CS4947
1980	Howard W. Johnstone, PLS No. 498	M86-6
2013	Gregory D. Lang, PLS No. 2285	CS6579-12A&C

I, JEFFREY O. COVINGTON, Cadastral Surveyor, HEREBY CERTIFY upon honor, that in pursuance of special instructions bearing the approval date of the 31st day of October, 2017, and the assignment instructions bearing the date of the 31st day of October, 2017, I have dependently resurveyed a portion of the subdivisional lines, Township 30 South, Range 3 West, Willamette Meridian, Oregon, which is represented upon this plat as having been executed by me and under my direction; and that said survey has been made in strict conformity with said special instructions, the Manual of Surveying Instructions, and in the specific manner described on this plat.

Jeffrey O. Covington  
Cadastral Surveyor  
July 1, 2020  
Date



TOWNSHIP 30 SOUTH, RANGE 3 WEST, OF THE WILLAMETTE MERIDIAN, OREGON  
DEPENDENT RESURVEY

Date: 10/13/2020 By: JC  
This survey consists of SHEET 2 OF 2  
Map: PLAT: 1903 2020-1

Narrative: VOL 59 PG 23795-7  
County: Douglas  
County Surveyor: [Signature]

OFFICIALLY FILED: 8/21/2020

(A) The 1/4 sec. cor. of secs. 11 and 12, perpetuated by Byron, Douglas County Deputy Surveyor, in 1963; subsequently perpetuated by Lang, PLS No. 2295, in 2013; monumented with the original stone, 8 x 10 x 15 ins. (Record, 15 x 10 x 10 ins.), firmly set, projecting 6 ins. above ground, (alongside is an iron post, 1 1/4 ins. diam., firmly set, projecting, 19 ins. above ground, with brass cap mkd. COUNTY SURVEYORS OFFICE T30S R3W 1/4 S11 S12 1963) with faint marks visible on west face, from which the remains of an original bearing tree

A broken decayed fir stump, 39 ins. diam., bears S. 73 1/2° W., 19.1 ft. dist., alongside of which is a decayed fir, with a tag and no marks visible.

and the bearing trees mkd. by Lang

A fir, 13 ins. diam., bears N. 50 1/2° E., 31.5 ft. dist., with illegible scribe marks visible on partially healed blaze.

A fir, 8 ins. diam., bears S. 49 1/4° E., 20.7 ft. dist., with scribe marks S12 BT visible on partially healed blaze.

A fir, 13 ins. diam., bears S. 57 1/4° W., 14.8 ft. dist., with illegible scribe marks visible on partially healed blaze.

A fir, 20 ins. diam., bears N. 44 3/4° W., 5.6 ft. dist., with illegible scribe marks visible on partially healed blaze.

At the corner point

Set a stainless steel post, 28 ins. long, 2 1/2 ins. diam., 24 ins. in the ground, with brass cap mkd.

T 30 S R 3 W  
1/4  
S 11 LS 12  
2019

Bury the original stone alongside the cor.

At the request of the Douglas County Surveyor's Office, removed the iron post, 32 ins. long, and bury it alongside the cor.

(B) The cor. of secs. 1, 2, 11, and 12, perpetuated by Byron, Douglas County Deputy Surveyor, in 1963; monumented with an iron post, 1 1/4 ins. diam., firmly set, projecting 14 ins. above ground, with a brass cap mkd.

COUNTY SURVEYORS OFFICE  
T 30 S  
S 2 S 1 R  
S 11 S 12 W  
1963

from which the remains of the original bearing trees

A fir snag, 36 ins. diam., bears N. 11° E., 73.3 ft. dist., with a healed blaze.

A sawed decayed fir stump, 60 ins. diam., bears S. 16 3/4° E., 70.3 ft. dist., with a healed blaze.

A fir snag, 36 ins. diam., bears S. 26 1/2° W., 34.7 ft. dist., with a healed blaze.

A sawed decayed fir stump, 56 ins. diam., bears N. 39° W., 46.2 ft. dist., with a healed blaze.

and the remains of the bearing trees mkd. by Byron

A fir, 30 ins. diam., bears N. 87 1/4° E., 14.5 ft. dist., with a healed blaze.

A decayed fir stump, size indeterminate, which is a down decayed fir, 20 ins. diam., no marks visible.

A fir, 22 ins. diam., bears S. 44° W., 6.0 ft. dist., with a healed blaze.

A fir, 24 ins. diam., bears N. 86 3/4° W., 40.1 ft. dist., with a healed blaze.

and a new bearing tree

A cedar, 8 ins. diam., bears S. 30 1/4° E., 40.0 ft. dist., mkd. T30S R3W S12 BT.

(C) The E 1/16 sec. cor. of secs. 2 and 11, established by PLS No. 493, in 1989; accepted as the cor.; monumented with an iron rod, 5/8 in. diam., firmly set, projecting 17 ins. above ground, with an aluminum cap mkd.

T 30 S R 3 W 1980  
E 1/16  
S 2  
S 11  
LS 498

from which the remains of the bearing trees mkd. by Johnstone

A root-hole bears N. 45 1/4° E., 19.9 ft. dist., alongside of which is a down fir, 11 ins. diam., with a healed blaze.

A fir, 14 ins. diam., bears S. 22 1/4° E., 16.7 ft. dist., with a healed double blaze.

At the corner point

Set a stainless steel post, 28 ins. long, 2 1/2 ins. diam., 27 ins. in the ground, directly over the iron rod, 36 ins. long, with brass cap mkd.

E 1/16 S 2  
S 11  
2017

from which a new bearing tree

A fir, 9 ins. diam., bears N. 24 1/2° E., 39.0 ft. dist., mkd. E 1/16 S2 BT.

(D) The 1/4 sec. cor. of secs. 2 and 11, perpetuated by Byron, Douglas County Deputy Surveyor, in 1960; occupied by the remains of the original cor. tree, a heavily decayed fir stump, 27 ins. diam., with no marks visible, from which the remains of an original bearing tree

A decayed fir snag, size indeterminate, bears S. 41 1/2° W., 6.9 ft. dist., with a healed blaze.

and a reference monument mkd. by Byron

An iron post, 1 1/4 ins. diam., firmly set, projecting 18 ins. above ground, bears N. 15° 57' 09" W., 0.91 ft. dist., with a brass cap mkd. COUNTY SURVEYORS OFFICE T30S R3W 1/4 S2 S11 1960.

At the corner point

Set a stainless steel post, 28 ins. long, 2 1/2 ins. diam., 26 ins. in the ground, with brass cap mkd.

T 30 S R 3 W  
S 2  
1/4  
S 11  
2017

from which

A fir, 9 ins. diam., bears S. 32° W., 23.6 ft. dist., mkd. 1/4 S11 BT.

A fir, 7 ins. diam., bears N. 13 3/4° W., 9.6 ft. dist., mkd. 1/4 S2 BT.

At the request of the Douglas County Surveyor's Office, removed the brass cap from the iron post, leaving the iron post in its original position, and a year later replaced the iron post with the iron post mkd. COUNTY SURVEYOR. Bury the brass cap alongside the true point.

UNITED STATES DEPARTMENT OF THE INTERIOR  
BUREAU OF LAND MANAGEMENT

Portland, Oregon

The survey represented by this plat, having been carefully checked in accordance with the requirements of law and the regulations of this Bureau, is hereby accepted.

For the Director

[Signature]

Chief Cadastral Surveyor of Oregon

July 14, 2020  
Date