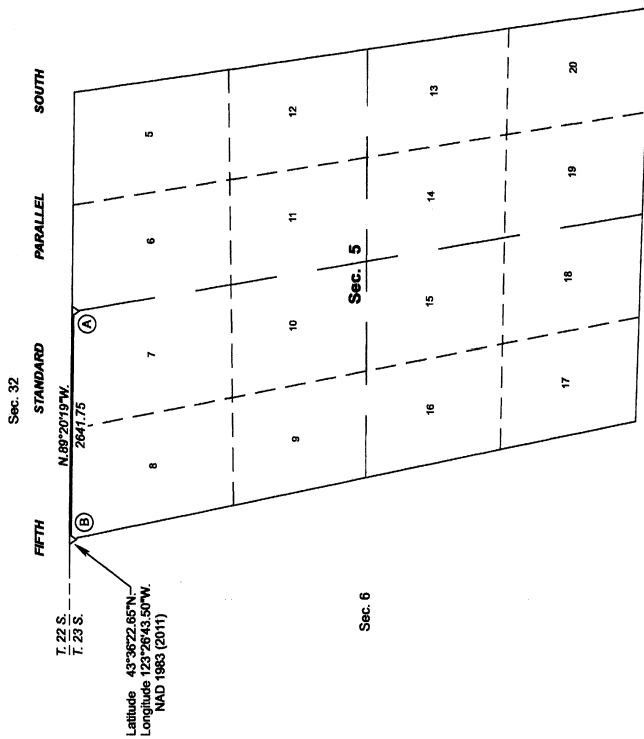


# TOWNSHIP 23 SOUTH, RANGE 6 WEST, OF THE WILLAMETTE MERIDIAN, OREGON

## DEPENDENT RESURVEY



The history of official surveys pertaining to this survey is as follows:

In 1855, Harvey Gordon and Charles T. Gardner, U.S. Deputy Surveyors, surveyed the Fifth Standard Parallel South through Ranges 6, 7, and part of 8 West, as shown on the official plat of survey approved September 24, 1855.

In 1897, Carl S. Nicklin, U.S. Deputy Surveyor, resurveyed a portion of the Fifth Standard Parallel South along the south boundary of T. 22 S., R. 6 W., and subdivided a portion of T. 22 S., R. 6 W., as shown on the official plat of survey approved March 25, 1898.

In 1943-57, Otis O. Couck, Cadastral Engineer, and Joseph S. Gannon, and Orville N. Engler, Cadastral Surveyors, resurveyed the Fifth Standard Parallel South along the north boundary of T. 23 S., R. 6 W., and resurveyed the west boundary and subdivisional lines of T. 23 S., R. 6 W., as shown on the official plat of survey accepted August 24, 1960. (Plat suspended September 22, 1983. Suspension lifted November 23, 1980.)

The following county surveyor file (CS), filed in the Douglas County Surveyor's Office is referred to in the subsequent corner descriptions and is referenced by official title, and year:

Date Name and Registration Number. File Number.  
1969 Douglas County Surveyor's Office CS-619 143-100

I, Jeffrey O. Covington, Cadastral Surveyor, HEREBY CERTIFY upon honor, that in pursuance of special instructions bearing the approval date of the 2nd day of June, 2017, and the assignment instructions bearing the date of the 2nd day of June, 2017, I have dependently resurveyed a portion of the north boundary (Fifth Standard Parallel South), Township 23 South, Range 6 West, Willamette Meridian, Oregon, which is represented upon this plat as having been executed by me and under my direction; and that said survey has been made in strict conformity with said special instructions, the Manual of Surveying Instructions, and in the specific manner described on this plat.

*Jeffrey O. Covington*  
Cadastral Surveyor

July 1, 2020  
Date



FILED ORIGINAL

Date: 10/12/2020 By: JC  
This survey consists of:  
Map: PLAT: T23-6 2020-1  
Nemetsch: VOL 59 PG 23795  
General-Reg: ALL INFORMATION ON THIS PLAT  
DOUGLAS COUNTY  
SURVEYOR

This plat constitutes the entire record of the dependent resurvey of a portion of the north boundary (Fifth Standard Parallel South), designed to restore the corner positions and bearings to those existing in the best available evidence, Township 23 South, Range 6 West, Willamette Meridian, Oregon.

The direction of the line is based on the true meridian as determined by Global Positioning System (GPS) techniques and carried forward by sustained angulation along the line derived through the use of electronic surveying equipment. All measurements and directions have been adjusted by computer software that incorporates a least squares adjustment routine. The adjusted mean bearings and mean horizontal ground elevation distances are reported to the nearest second and 0.01 foot.

The lottings and areas are as shown on the plat approved August 24, 1960.

Preliminary to the resurvey, the lines of the official original survey and resurveys were retraced and a search was made for all corners, lines, other calls of the record, and, where available, collateral evidence of local surveys and corners. Identified corners were perpetuated in their original positions. The retracement data was thoroughly verified and only the true line field notes are given herein.

Each new bearing tree has a 2 1/2 inch x 1/4 inch magnetic nail (Mag Nail) driven at the base on right side center, unless otherwise noted in the corner description. Aluminum angle irons were driven alongside each monument unless a similar marker was already in place.

Only those lines bounding Federal interest land were blazed.

The geographic position shown hereon was determined by a tie from a temporary GPS control point, established utilizing dual frequency, carrier phase GPS receivers, and processed using the National Geodetic Survey's Online Positioning User Service (OPUS).

The survey was executed in accordance with the specifications set forth in the special instructions bearing the approval date of the 2nd day of June, 2017, for Group No. 2874, Oregon, approved June 2, 2017, by Jeffrey O. Covington, Cadastral Surveyor, beginning August 14, 2017, and completed August 16, 2017. He was assisted by Kevin G. Mulder and Ernest C. Lundeen, Cadastral Surveyors, and Todd R. Jennings, Dale A. Mustain, and Logan B. Downs, Surveying Technicians.

LEGEND  
◊ Original corner previously monumented

UNITED STATES DEPARTMENT OF THE INTERIOR  
BUREAU OF LAND MANAGEMENT

Portland, Oregon  
The survey represented by this plat, having been correctly executed in accordance with the requirements of law and the regulations of this Bureau, is hereby accepted.

For the Director  
*Mary Jo M. Hand*  
Chief Cadastral Surveyor of Oregon

July 14, 2020  
Date

OFFICIALLY FILED: 8/21/2020

THIS PLAT REPRESENTS THE ENTIRE RECORD OF THE DEPENDENT RESURVEY

23795