

FILED

Date: 9/18/2017 By: JC

This survey consists of:
Map: PLAT: T30-2 2017-1

Narrative: VOL. 58 PAGE SHEET 1 OF 2
Corner-Rep: 23488-23489

DOUGLAS COUNTY
SURVEYOR

This plat constitutes the entire record of the dependent resurvey of portions of the subdivisional lines, Township 30 South, Range 2 West, Willamette Meridian, Oregon, designed to restore the corners in their true original locations according to the best available evidence.

The history of official surveys pertaining to this survey is as follows:

In 1858, Dennis Hathorn, U.S. Deputy Surveyor, surveyed a portion of the subdivisional lines as shown on the official plat of survey approved February 20, 1858.

In 1909, Fred Mensch, U.S. Deputy Surveyor, retraced a portion of the subdivisional lines, dependently resurveyed a portion of the subdivisional lines, and surveyed the remainder of the subdivisional lines as shown on the official plat of survey approved October 14, 1910.

In 1983, Wayne L. Rogers and Lance J. Bishop, Cadastral Surveyors, dependently resurveyed a portion of the subdivisional lines and subdivided section 29 as shown on the official plat of survey accepted April 5, 1985.

The following county surveyor file, filed in the Douglas County Surveyor's Office, is referred to in subsequent corner descriptions and is referenced by the office name and year.

Date 1968-70 Name and Registration Number File Number
Douglas County Surveyor's Office CS5473

The directions of the lines are based on the true meridian as determined by Global Positioning Systems (GPS) techniques and carried forward by sustained angulation using conventional survey techniques. All measurements along the lines were derived through the use of GPS and conventional survey techniques. Measured distances and directions have been adjusted by computer software that incorporates a least squares adjustment routine. The adjusted mean bearings and mean horizontal ground elevation distances are reported to the nearest second and 0.01 foot.

The lottings and areas are as shown on the plats approved February 20, 1858, and October 14, 1910.

Preliminary to the resurvey, the lines of the official original surveys and resurveys were retraced and a search was made for all corners, lines, other calls of record, and where available, collateral evidence of local surveys and corners. Identified corners were perpetuated in their original positions. The retracement data was thoroughly verified and only the true line field data are given hereon.

Each new bearing tree has a 2 1/2 inch x 1/4 inch magnetic nail (Mag Nail) driven at the base on right side center, unless otherwise noted in the corner description. Only those lines bounding Federal interest land were blazed.

The geographic positions shown hereon were determined by ties from temporary GPS control points utilizing dual frequency, carrier phase GPS receivers, and processed using the National Geodetic Survey's Online Positioning User Service (OPUS).

The survey was executed in accordance with the specifications set forth in the Manual of Surveying Instructions (2009), and the special instructions approved October 23, 2015, for Group No. 2818, Oregon, by Jeffrey O. Covington, Cadastral Surveyor, beginning November 9, 2015, and completed November 23, 2015. He was assisted by Robert NMI Durning and Marc A. Montipas, Surveying Technicians.

UNITED STATES DEPARTMENT OF THE INTERIOR
BUREAU OF LAND MANAGEMENT

Portland, Oregon

The survey represented by this plat, having been correctly executed in accordance with the requirements of law and the regulations of this Bureau, is hereby accepted.

For the Director

Mary J. M. Harts

Chief Cadastral Surveyor of Oregon

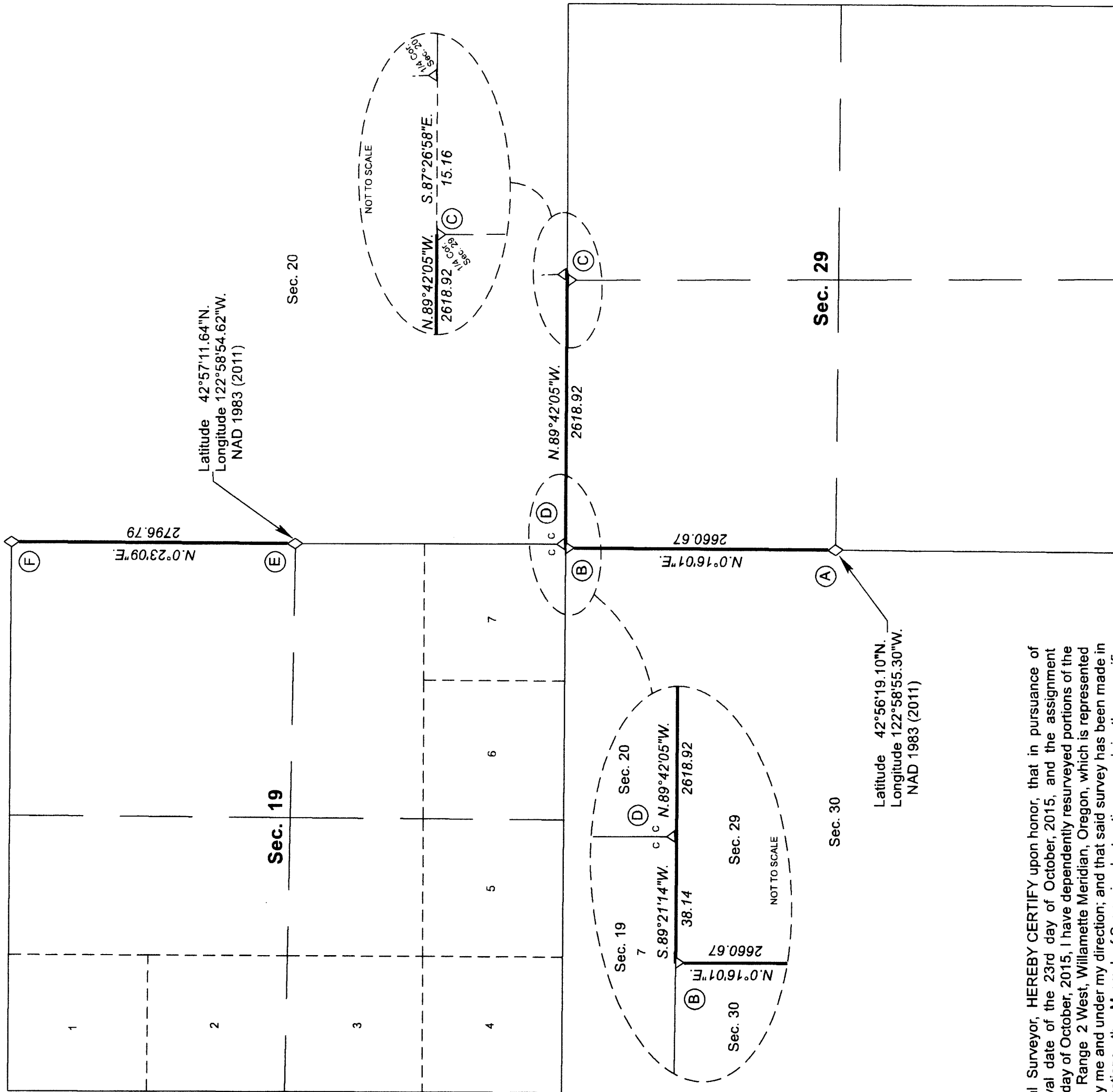
April 18, 2017

Date

TOWNSHIP 30 SOUTH, RANGE 2 WEST, OF THE WILLAMETTE MERIDIAN, OREGON
DEPENDENT RESURVEY

Sec. 17

Sec. 18



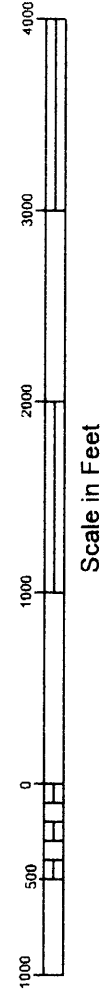
I, JEFFREY O. COVINGTON, Cadastral Surveyor, HEREBY CERTIFY upon honor, that in pursuance of special instructions bearing the approval date of the 23rd day of October, 2015, and the assignment instructions bearing the date of the 23rd day of October, 2015, I have dependently resurveyed portions of the subdivisional lines, Township 30 South, Range 2 West, Willamette Meridian, Oregon, which is represented upon this plat as having been executed by me and under my direction; and that said survey has been made in strict conformity with said special instructions, the Manual of Surveying Instructions, and in the specific manner described on this plat.

Jeffrey O. Covington
Cadastral Surveyor

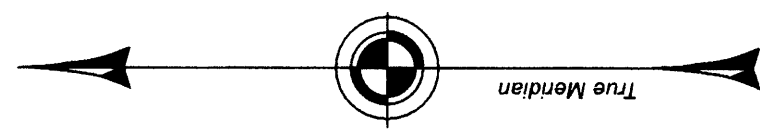
4-10-2017

Date

LEGEND
◇ Original corner previously remonumented



S. C. W.



OFFICIALLY FILED: 7/20/2017