

TOWNSHIP 20 SOUTH, RANGE 8 WEST, OF THE WILLAMETTE MERIDIAN, OREGON

DEPENDENT RESURVEY

This plat constitutes the entire record of the dependent resurvey of a portion of the subdivision lines designed to restore the corners in their true original locations according to the best available evidence. Township 20 South, Range 8 West, Willamette Meridian, Oregon.

The directions of the lines are based on the true meridian as determined by Global Positioning System (GPS) techniques and direct solar observations and carried by theodolite and triangulation using conventional survey techniques. All measurements were made by the surveyor derived through the use of GPS and conventional survey techniques. Measured distances and directions have been adjusted by computer software that incorporates a least squares adjustment routine. The adjusted mean bearings and mean horizontal ground elevation distances are reported to the nearest second and 0.01 foot.

Official areas based on the measurements of this survey have been returned for Federal interest land where the original part of the subdivision lines remain their original character and for other lands that are identified as that which was previously identified by its original survey or description. A lot can only be subdivided by survey or supplemental plat. Except as indicated herein, the lottings and areas are as shown on the plat accepted February 3, 1960.

Preliminary to the resurvey, the lines of the official original survey and resurveys were retraced and a search was made for all corners, lines, other calls of record, and were available collateral evidence of local surveys and other original positions. The retracement data was thoroughly verified and only the true line field data are given herein. Each new bearing tree has a 2 1/2 inch x 1/4 inch magnetic nail (Mag Nail) driven at the base on right side center, unless otherwise noted in the corner description. Only those lines bounding Federal interest land were blazed.

The geographic position shown hereon was determined by means of GPS. The survey was conducted using the National Geodetic Survey's Online Positioning User Service (OPUS).

The survey was executed in accordance with the specifications set forth in the Manual of Surveying Instructions (2009), and the special instructions approved August 21, 2015, for Group No. 2809, Oregon, by Edith M. Foraker, Cadastral Surveyor, beginning September 1, 2015, and completed October 1, 2015. The survey was conducted by Jason T. Blum, Keith G. Felner, and Jacob M. Hunt, Surveying Technicians.

UNLESS OTHERWISE NOTED, THE LIGHTWEIGHT LINES WITH BEARINGS AND DISTANCES SHOWN WERE SURVEYED BY THOMAS A. TILMAN, RAYMOND M. BICKNELL, HANS W. THIELSEN, AND JOSEPH S. GAWRON IN 1953-54, AND WERE UTILIZED TO CALCULATE THE AREAS OF THE FEDERAL INTEREST LAND IN SECTION 9.

NOTE: UNLESS OTHERWISE NOTED, THE LIGHTWEIGHT LINES WITH BEARINGS AND DISTANCES SHOWN WERE SURVEYED BY THOMAS A. TILMAN, RAYMOND M. BICKNELL, HANS W. THIELSEN, AND JOSEPH S. GAWRON IN 1953-54, AND WERE UTILIZED TO CALCULATE THE AREAS OF THE FEDERAL INTEREST LAND IN SECTION 9.

DATE: NAME AND REGISTRATION NUMBER: FILE NUMBER:
2014 Ronald L. Rice, PLS No. 546833 M168-37

THE HISTORY OF OFFICIAL SURVEYS PERTAINING TO THIS SURVEY IS AS FOLLOWS:

In 1883, William P. Wright, U.S. Deputy Surveyor, surveyed the subdivision lines as shown on the official plat of survey approved August 4, 1884, and accepted August 19, 1884.

In 1953-54, Thomas A. Tilman, Raymond M. Bicknell, Hans W. Thielssen, and Joseph S. Gawron, Cadastral Engineers, resurveyed a portion of the subdivision lines, as shown on the official plat of survey accepted February 3, 1960.

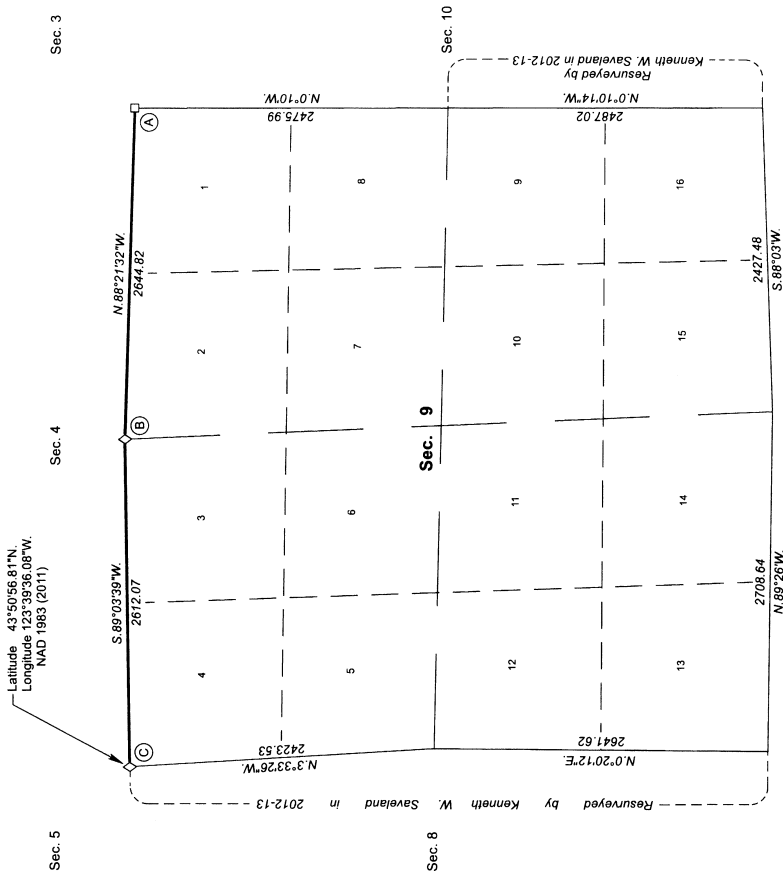
In 1967, William W. Glenn, C. Albert White, and James E. Jell, Cadastral Surveyors, resurveyed certain original corner points, as described in the official field notes approved March 3, 1977.

In 2005, Aaron M. Graham, Cadastral Surveyor, rehabilitated certain corner points, as described in the official field notes approved January 30, 2009.

In 2012-13, Kenneth W. Saveland, Cadastral Surveyor, resurveyed a portion of the subdivision lines, as shown on the official plat of survey accepted March 17, 2014.

The following local surveys filed in the Douglas County Surveyor's Office are referred to in the subsequent corner descriptions and are referenced by surveyor's last name, Professional Land Surveyor (PLS) No., and year:

DATE: NAME AND REGISTRATION NUMBER: FILE NUMBER:
2014 Ronald L. Rice, PLS No. 546833 M168-37



LEGAL SUBDIVISION	OFFICIAL ACRES
SECTION 9	
LOT 1	37.28
LOT 2	37.28
LOT 3	37.13
LOT 4	36.47
LOT 5	36.83
LOT 6	36.83
LOT 7	36.75
LOT 8	36.54
LOT 9	37.23
LOT 10	37.23
LOT 11	39.26
LOT 12	39.45
LOT 13	40.26
LOT 14	40.26
LOT 15	36.44
LOT 16	35.50
TOTAL AREA FEDERAL INTEREST LAND RESURVEYED	599.61

I, Edith M. Foraker, Cadastral Surveyor, HEREBY CERTIFY upon honor, that in pursuance of special instructions bearing the approval date of the 21st day of August, 2015, and the assignment instructions bearing the date of the 31st day of August, 2015, I have dependently resurveyed a portion of the subdivision lines, Township 20 South, Range 8 West, Willamette Meridian, Oregon, which is represented upon this plat as having been executed by me and under my direction; and that said survey has been made in strict conformity with said special instructions, the Manual of Surveying Instructions, and in the specific manner described on this plat.

Edith M. Foraker
Cadastral Surveyor

3-13-17
Date

For the Director
Mary J. M. Hartzel
Chief Cadastral Surveyor of Oregon

March 24, 2017
Date

