

THIS PLAT REPRESENTS THE ENTIRE RECORD OF THE RESURVEY

Date: 9/18/2017 By: JC
This survey consists of
Map, PLAT, T20-S, 2016-1
Narrative: VOL. 58 PAGES
General-Ref: 23443-45
SHEET 1 OF 3
DOUGLAS COUNTY
SURVEYOR

TOWNSHIP 20 SOUTH, RANGE 8 WEST, OF THE WILLAMETTE MERIDIAN, OREGON
DEPENDENT RESURVEY AND SUBDIVISION OF SECTION 34

This plat constitutes the entire record of the dependent resurvey of a portion of the south boundary and subdivisional lines, designed to restore the corners to their true original locations according to the best available evidence, and the subdivision of section 34, Township 20 South, Range 8 West, Willamette Meridian, Oregon.

The directions of the lines are based on the true meridian as determined by Global Positioning System (GPS) observations and precise solar observations and carried forward by sustained triangulation using conventional survey techniques. All measurements along the lines were derived through the use of GPS and conventional survey techniques. Measured distances and directions have been adjusted by computer software that incorporates a least squares adjustment routine. The adjusted mean bearings and mean horizontal ground elevation distances are reported to the nearest second and 0.01 foot.

Official areas based on the measurements of this survey have been returned for Federal interest land where indicated. Aliquot part, legal subdivisions retain their aliquot characteristics and refer to precisely the same land as that which was previously identified by its original survey or description. A lot can only be subdivided by survey or supplemental plat. Except as indicated hereon, the lottings and areas are as shown on the plat accepted August 4, 1884.

Preliminary to the resurvey, the lines of the official original surveys and resurveys are referred to by their original field notes approved March 31, 1917, and other calls of record, and where available, collateral evidence of local surveys and corners identified corners were perpetuated in their original positions. The retracement data was thoroughly verified and only the true line field data are given hereon.

A magnet in a white plastic case was deposited at the base of each stainless steel post, and each north bearing line has a 2-1/2 inch x 1/4 inch magnetic nail (Mag Nail) driven at the base on right side center, unless otherwise noted in the field notes. The distance between the 5 inch long stainless steel drive alongside all corners unless an existing guard post was otherwise noted in the corner description. Only those lines bounding Federal interest land were blazed.

The geographic positions shown hereon were determined by ties from temporary GPS control points, utilizing dual frequency, carrier phase GPS receivers, and processed using the National Geodetic Survey's Online Positioning User Service (OPUS).

The survey was executed in accordance with the specifications set forth in the Manual of Surveying Instructions (2009), and the special instructions approved February 24, 2015, for Group No. 2780, Oregon, by Edith M. Forkner, Cadastral Surveyor, beginning March 23, 2015, and completed August 5, 2015. She was assisted by Kenneth W. Saveland, Cadastral Surveyor; Jason H. Blum and Keith G. Felker, Surveying Technicians; and Zach Hackney, Volunteer.

UNITED STATES DEPARTMENT OF THE INTERIOR
BUREAU OF LAND MANAGEMENT

Portland, Oregon

The survey represented by this plat, having been correctly executed in accordance with the requirements of law, and the regulations of this Bureau, is hereby accepted.

For the Director

Mary M. Hurd
Chief Cadastral Surveyor of Oregon

Judy G. 2016
Date

The history of official surveys pertaining to this survey is as follows:

In 1883-84, William P. Wright, U.S. Deputy Surveyor surveyed the boundaries of the township and subdivisional lines, as shown on the official plat of survey approved August 4, 1884, and accepted August 19, 1884.

In 1980, Thomas A. Tillman, Cadastral Engineer, dependently resurveyed a portion of the south boundary and subdivisional lines, as shown on the official plat of survey accepted February 7, 1982.

In 1982-84, Merwin J. Lytle, Palmer Norseth, Thomas A. Tillman, Raymond M. Bicknell, Joseph S. Gawron, and Hans W. Thelsen, Cadastral Engineers, dependently resurveyed a portion of the subdivisional lines of T. 21 S., R. 8 W., as shown on the official plat of survey accepted April 14, 1980, suspended January 24, 2007.

In 1987, William W. Glenn, C. Albert White, and James E. Jolley, Cadastral Surveyors, remonumented certain original corner points as described in the official field notes approved March 31, 1917.

In 2005, Aaron M. Graham, Cadastral Surveyor, remonumented certain original corner points as described in the official field notes approved January 30, 2009.

In 2011, Edith M. Forkner and Aaron M. Graham, Cadastral Surveyors, dependently resurveyed a portion of the subdivisional lines, as shown on the official plat of survey accepted January 7, 2013.

In 2013-14, Edith M. Forkner, Cadastral Surveyor, dependently resurveyed a portion of the subdivisional lines, as shown on the official plat of survey accepted February 17, 2015.

The following local surveys filed in the Douglas County Surveyor's Office are referred to in subsequent corner descriptions and are referenced by surveyor's last name, Professional Land Surveyor (PLS) No. or official title, and year.

Date Name and Registration Number, File Number
July 1987 Douglas County Surveyor's Office CS 54/67
Oct. 1987 Douglas County Surveyor's Office CS 54/67
1984 Daniel W. Baker, PLS No. 1978 M 97/51

LEGEND

- ◇ Original corner previously remonumented
- ◆ Original corner remonumented this survey
- Corner previously established or reestablished
- Corner established or reestablished this survey
- + Corner point calculated, no monument set

LEGAL SUBDIVISION	OFFICIAL ACRES	SECTION 34
SW1/4 NW1/4	40.57	
NE1/4 SW1/4	40.64	
NW1/4 SW1/4	40.85	
SE1/4 SW1/4	41.32	
NW1/4 SE1/4	40.61	
SW1/4 SE1/4	40.95	
TOTAL AREA	286.05	
FEDERAL INTEREST LAND RESURVEYED		

I, Edith M. Forkner, Cadastral Surveyor, HEREBY CERTIFY upon honor, that, in pursuance of special instructions bearing the approval date of the 24th day of February, 2015, and the assignment instructions bearing the date of the 24th day of February, 2015, I have dependently resurveyed a portion of the south boundary and subdivisional lines, and subdivided section 34, Township 20 South, Range 8 West, Willamette Meridian, Oregon, which is represented upon this plat as having been executed by me and under my direction, and that said survey has been made in strict conformity with said special instructions, the Manual of Surveying Instructions, and in the specific manner described on this plat.

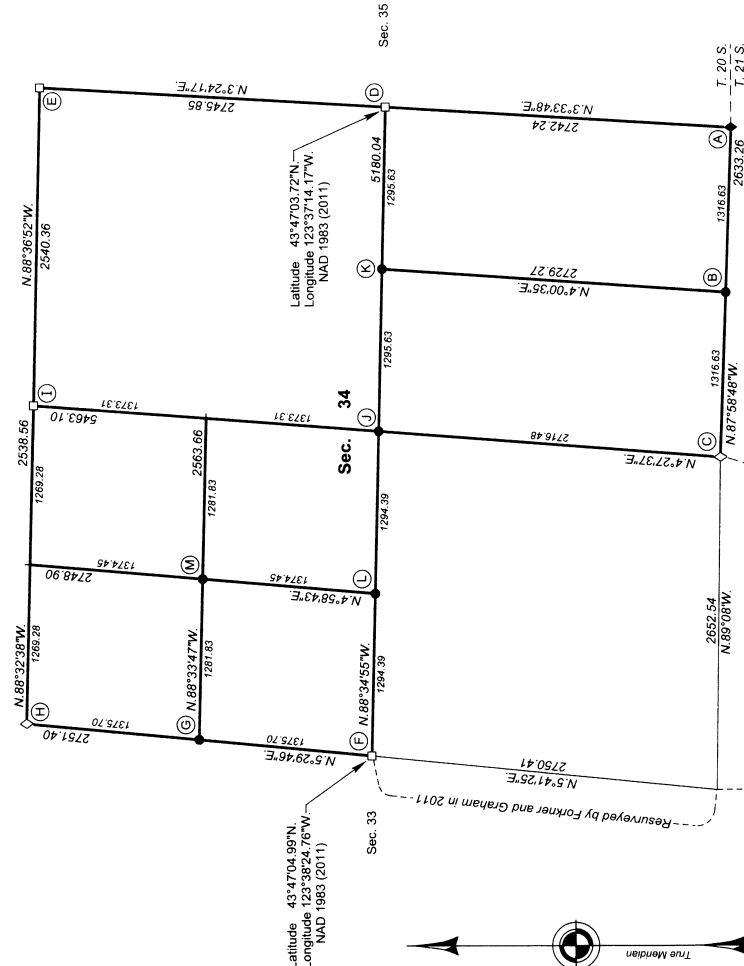
Edith M. Forkner
Cadastral Surveyor

6-30-16
Date

Sec. 26

Sec. 27

Sec. 28



Sec. 2

Sec. 3

