

FILED

Date: 8/21/2017 BY: JC
 This survey consists of
 Map, PLAT: T31-9, 2017-1 (0.058)
 Narratives: VOL 58 PAGES
 Corner Plat: 23440-23442
 PLAT REVISION NUMBER
 DOUGLAS COUNTY
 SURVEYOR

Sec. 17

TOWNSHIP 31 SOUTH, RANGE 9 WEST, OF THE WILLAMETTE MERIDIAN, OREGON
 DEPENDENT RESURVEY AND SUBDIVISION OF SECTION 21

Sec. 16

This plat constitutes the entire record of the dependent resurvey of a portion of the subdivision lines, designed to restore the corners in their true original locations according to the best available evidence, and the subdivision of section 21, Township 31 South, Range 9 West, Willamette Meridian, Oregon.

The history of official surveys pertaining to this survey is as follows:

In 1901, William H. Byars, U.S. Deputy Surveyor, surveyed the subdivision lines, as shown on the official plat of survey approved April 3, 1902, and accepted February 11, 1903.

In 1973, Lynn M. Roseberry, Cadastral Surveyor, dependently resurveyed a portion of the subdivision lines, as shown on the official plat of survey accepted September 14, 1977.

The following local surveys filed in the Douglas County Surveyor's Office are referred to in the subsequent corner descriptions and are referenced by surveyor's last name, Professional Land Surveyor (PLS) No. or Professional Engineer (PE) No., and year.

Date	Name and Registration Number	File Number
1960	Lorne Van Swearingen, PE No. 4186	CS51/68
1960 & 1965	Clifford A. Stephens, PLS No. 238	M20-16
1967	Douglas County Surveyors Office	CS54/32
1985	Terrence Nickerson, PLS 1649	CS 62/24-2C

The directions of the lines are based on the true meridian as determined by Global Positioning System (GPS) techniques and direct solar observations and carried forward by sustained angulation using conventional survey techniques. All measurements along the lines were derived through the use of GPS and conventional survey techniques. Measured distances and directions have been adjusted by computer software that incorporates a least squares adjustment routine. The adjusted mean bearings and mean horizontal ground elevation distances are reported to the nearest second and 0.01 foot.

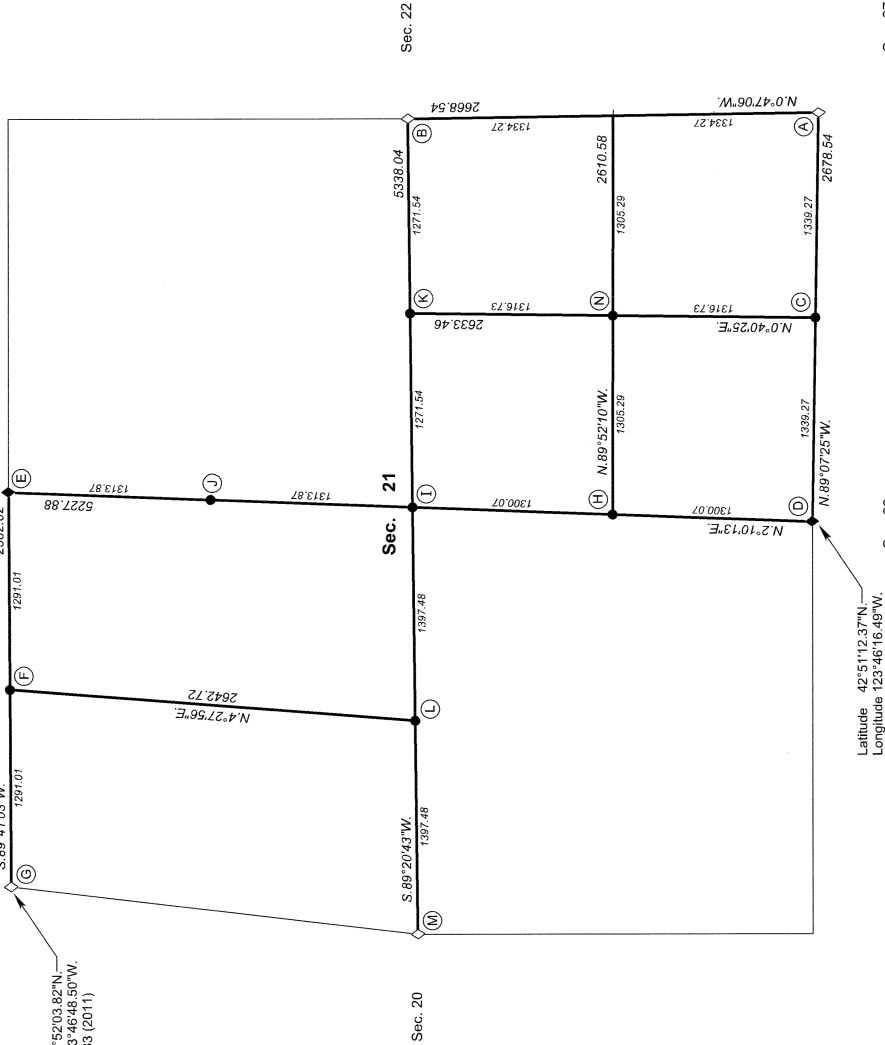
Official areas based on the measurements of this survey have been returned for Federal interest land where indicated. Aliquot part legal subdivisions remain their aliquot characteristics and refer to precisely the same land as that which was previously identified by its original survey or description. A lot can only be subdivided by survey or supplemental plat. Except as indicated hereon, the lottings and areas are as shown on the plat approved April 3, 1902.

Preliminary to the resurvey, the lines of the official original survey were retraced and a search was made for all corners, lines, other calls of record, and where available, collateral evidence of local surveys and corners. Identified corners were perpetuated in their original positions. The retracement data was thoroughly verified and only the true line field data are given hereon.

A magnet in a white plastic case was deposited at the base of each stainless steel post, and each new bearing tree has a 2 1/2 inch x 1/4 inch magnetic nail (Mag Nail) driven at the base on right side center, unless otherwise noted in the corner description. Aluminum angle irons were driven alongside each monument unless an existing guard post was otherwise noted in the corner description. Only those lines bounding Federal interest land were blazed.

The geographic position shown hereon was determined by a tie from a temporary GPS control point established utilizing dual frequency carrier phase GPS receivers, and processed using the National Geodetic Survey's Online Positioning User Service (OPUS).

The survey was executed in accordance with the specifications set forth in the Manual of Surveying Instructions (2009), and the special instructions approved July 9, 2015, for Group No. 2795, Oregon, by Edith M. Forkner, Cadastral Surveyor, beginning August 3, 2015, and completed March 9, 2016. She was assisted by Robert W. Fleming and Kenneth W. Saveland, Cadastral Surveyors; and Jason H. Blum, Keith G. Felker, and Jacob M. Hunt, Surveying Technicians.



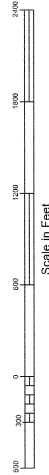
Latitude 42°5'11.237"N
 Longitude 123°46'16.46"W
 NAD 1983 (2011)

LEGAL SUBDIVISION	OFFICIAL ACRES
SECTION 21	
SW1/4 SE1/4	39.71
TOTAL AREA	39.71
TOTAL ACRES	
LAND RESURVEYED	

I, Edith M. Forkner, Cadastral Surveyor, HEREBY CERTIFY upon honor, that in pursuance of special instructions bearing the approval date of the 9th day of July, 2015, and the assignment instructions bearing the date of the 9th day of July, 2015, I have dependently resurveyed a portion of the subdivision lines and subdivided section 21, Township 31 South, Range 9 West, Willamette Meridian, Oregon, which is represented upon this plat as having been executed by me as a surveyor in direction of the said Edith M. Forkner, in accordance with said special instructions, the Manual of Surveying Instructions, and in the specific manner described on this plat.

Edith Forkner
 Cadastral Surveyor

2-6-2017
 Date



LEGEND

- ◇ Original corner previously monumented
- ◆ Original corner monumented this survey
- Corner established or reestablished this survey
- + Corner point calculated, no monument set

Sec. 27

Sec. 28

Sec. 22

UNITED STATES DEPARTMENT OF THE INTERIOR
 BUREAU OF LAND MANAGEMENT

Portland, Oregon

The survey represented by this plat, having been correctly executed in accordance with the requirements of law and the regulations of this Bureau, is hereby accepted.

For the Director

Mary J. M. Heald
 Chief Cadastral Surveyor of Oregon

February 9, 2017
 Date

SHEET 1 OF 3

THIS PLAT REPRESENTS THE ENTIRE RECORD OF THE DEPENDENT RESURVEY

OFFICIALLY FILED: 6/28/2017

23440