

FILED

Date: 8/21/2017 By: JC
This survey consists of:
Map: PLAT: T29-3 2017-1 (F.P.S.S.)

Narrative: VOL. 58 PAGES
Corner App: 23423-23425

ALL INFORMATION ON THIS PLAT
DOUGLAS COUNTY
SURVEYOR

TOWNSHIP 29 SOUTH, RANGE 3 WEST, OF THE WILLAMETTE MERIDIAN, OREGON
DEPENDENT RESURVEY

SHEET 1 OF 3

This plat constitutes the entire record of the dependent resurvey of a portion of the subdivisional lines, Township 29 South, Range 3 West, Willamette Meridian, Oregon, designed to restore the corners in their true original locations according to the best available evidence.

The directions of the lines are based on the true meridian as determined by Global Positioning Systems (GPS) techniques and carried forward by sustained angulation using conventional survey techniques. All measurements along the lines were derived through the use of GPS and conventional survey techniques. Measured distances and directions have been adjusted by computer software that incorporates a least squares adjustment routine. The adjusted mean bearings and mean horizontal ground elevation distances are reported to the nearest second and 0.01 foot.

Except as shown herein, the lotings and areas are as shown on the plat approved February 20, 1858, and August 11, 1881, and plat accepted May 3, 1983.

Preliminary to the resurvey, the lines of the official original surveys and resurveys were retraced and a search was made for all corners, lines, other calls of record, and where available, collateral evidence of local surveys and corners. Identified corners were perpetuated in their original positions. The retracement data was thoroughly verified and only the true line field data are given herein.

Each new bearing tree has a 2 1/2 inch x 1/4 inch magnetic nail (Mag Nail) driven at the base on right side center, unless otherwise noted in the corner description. Only those lines bounding Federal interest land were blazed.

The geographic positions shown herein were determined by use of temporary GPS control points utilizing dual frequency carrier phase GPS receivers and processed using the National Geodetic Survey's Online Positioning User Service (OPUS).

The survey was executed in accordance with the specifications set forth in the Manual of Surveying Instructions (2009), and the special instructions approved August 7th, 2015, for Group No. 2804, Oregon, by Jeffrey O. Covington, Cadastral Surveyor, beginning August 19th, 2015, and completed September 8th, 2015. He was assisted by Robert NMI Durning, Marc A. Montpas and Justin B. Dyer, Surveying Technicians.

- LEGEND**
- ◇ Original corner previously remonumented
 - Corner previously established or reestablished

UNITED STATES DEPARTMENT OF THE INTERIOR
BUREAU OF LAND MANAGEMENT

Portland, Oregon

The survey represented by this plat, having been correctly executed in accordance with the requirements of law and the regulations of this Bureau, is hereby accepted.

For the Director

Mary J. M. Hest
Chief Cadastral Surveyor of Oregon

February 17, 2017
Date

The history of official surveys pertaining to this survey is as follows:

In 1858, Dennis Hathorn, U.S. Deputy Surveyor, surveyed a portion of the subdivisional lines, as shown on the official plat of survey approved February 20, 1858, and certified as a correct copy of the original plat on September 9, 1935.

In 1881, William H. Byars, U.S. Deputy Surveyor, surveyed the remainder of the subdivisional lines, as shown on the official plat of survey approved August 11, 1881.

In 1966-67, John M. Jolley and Lynn M. Roseberry, Cadastral Surveyors, dependently resurveyed a portion of the subdivisional lines, as shown on the official plat of survey accepted May 1, 1969.

In 1975, Bruce A. Shaner, Registered Land Surveyor No. 430, under contract No. 52500-CT5-117, dependently resurveyed a portion of the subdivisional lines, as shown on the official plat of survey accepted April 24, 1978.

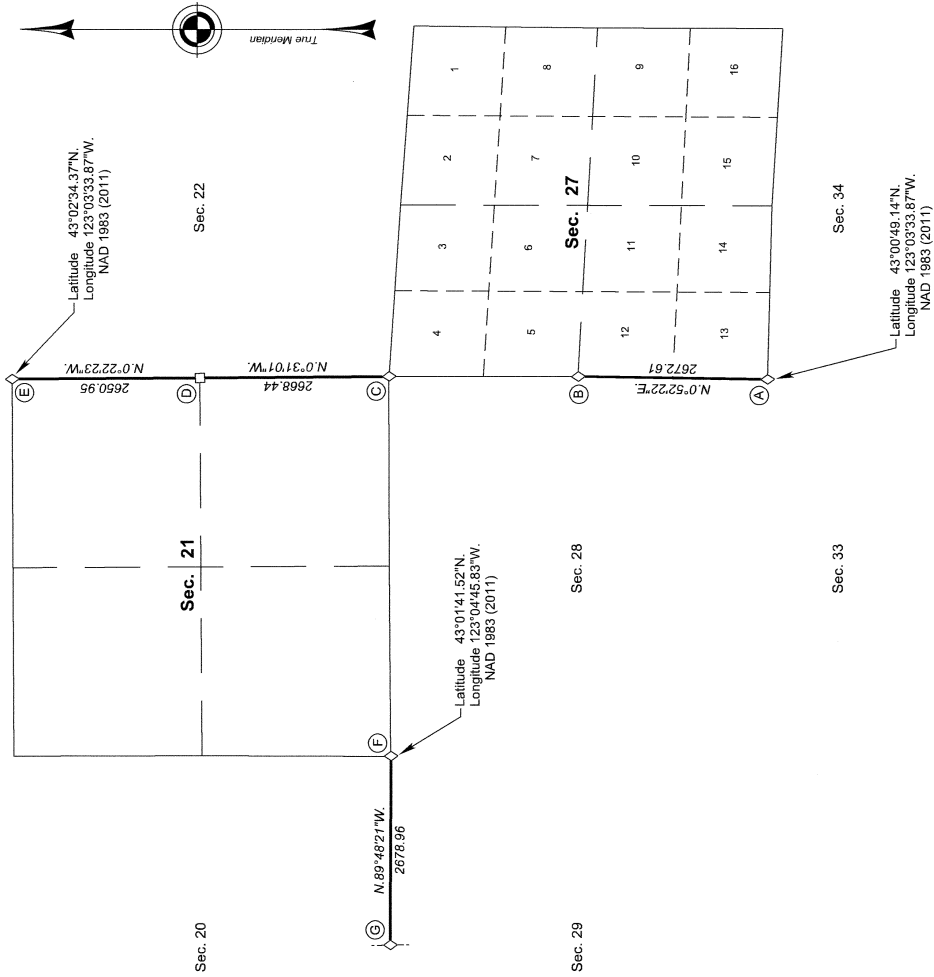
In 1979-80, James E. Jolley and Wayne L. Rogers, Cadastral Surveyors, dependently resurveyed a portion of the subdivisional lines and subdivided section 21, as shown on the official plat of survey accepted May 3, 1983.

In 2007, A. Bert Steesick, Cadastral Surveyor, and Robert H. Browning, Surveying Technician, dependently resurveyed a portion of the subdivisional lines, as shown on the official plat of survey accepted June 15, 2011.

In 2007, A. Bert Steesick, Cadastral Surveyor, and Robert H. Browning, Surveying Technician, dependently resurveyed a portion of the subdivisional lines, as shown on the official plat of survey accepted July 11, 2011.

The following local surveys filed in the Douglas County Surveyors Office are referred to in the subsequent corner descriptions and are referenced by surveyor's last name, official title, or Professional Engineer (PE), or Professional Land Surveyor (PLS) No., and year.

Date	Name and Registration Number	File Number
1941	Ben E. Irving, Deputy Co Surveyor	CS 16165
1952	John H. Markham Jr., PE No. 2880	CS-1163
1959	James W. Byrom, Deputy Co Surveyor	CS-5947
1979	Bruce A. Shaner, Registered Land Surveyor	PLS No. 430
2004	David L. Rice, PLS No. 54633	M145-26
2007	David A. Edwards, PLS No. 2339	M152-14



I, Jeffrey O. Covington, Cadastral Surveyor, HEREBY CERTIFY upon honor, that in pursuance of special instructions bearing date of the 7th day of August, 2015, I have dependently resurveyed a portion of the subdivisional lines of Township 29 South, Range 3 West, Willamette Meridian, Oregon, which is represented upon this plat as having been executed by me and under my direction; and that said survey has been made in strict conformity with said special instructions, the Manual of Surveying Instructions, and in the specific manner described on this plat.

Jeff O. Covington
Cadastral Surveyor

February 13, 2017
Date