

FILED Date: 3/21/2016 By: JC ORIGINAL  
This survey consists of:  
Map: PLAT: 724-3 2016-1 A-B  
Name: NOTES VOL 58  
Governing: PLS 23312-2330 SHEET 1 OF 2  
ALL INFORMATION IS ON THE PLAT  
DOUGLAS COUNTY  
SURVEYOR

The directions of the lines are based on the true meridian as determined by Global Positioning Systems (GPS) and direct solar observations and carried forward by secondary measurements along the lines were taken through the use of GPS and conventional survey techniques. Measured distances and directions have been adjusted by computer software that incorporates a least squares adjustment routine. The adjusted mean bearings and mean horizontal ground elevation distances are reported to the nearest second and 0.01 foot at 2200 feet elevation.

Official areas based on the measurements of this survey have been returned for Federal interest land as indicated. Aliquot part, legal subdivisions retain their aliquot characteristics and refer to precisely the same land as that which was previously identified by its original survey or description. A lot can only be subdivided by survey or supplemental plat. Except as indicated herein, the lottings and areas are as shown on the plat approved May 19, 1884 and December 3, 1951, and the plat accepted February 4, 1998.

The lines of the official original survey and resurvey were retraced and second line for all lines, and other calls of record. The retracement data were thoroughly verified and only the true line field data are given hereon.

Each new bearing line has a 2 1/2 inch x 1/4 inch magnetic nail (Mag Nail) driven at the base on right side center, unless otherwise noted in the corner description. Only those lines bounding Federal interest land were blazed.

The geographic positions shown hereon were determined by ties from temporary GPS control points utilizing dual frequency, carrier phase GPS receivers, and processed using the National Geodetic Survey's Online Positioning User Service (OPUS).

The survey was executed in accordance with the specifications set forth in the Manual of Surveying Instructions (2009), and the special instructions approved April 26, 2010, for Group No. 2500, by Richard J. Dieckmann, Cadastral Surveyor, Oregon, July 30, 2014, and completed August 11, 2014. He was assisted by Luke A. Chapman, Robert NMI Durning, and Marc A. Montpas, Surveying Technicians.

- ◇ Original corner previously re monumented
- Corner previously established or reestablished

UNITED STATES DEPARTMENT OF THE INTERIOR  
BUREAU OF LAND MANAGEMENT

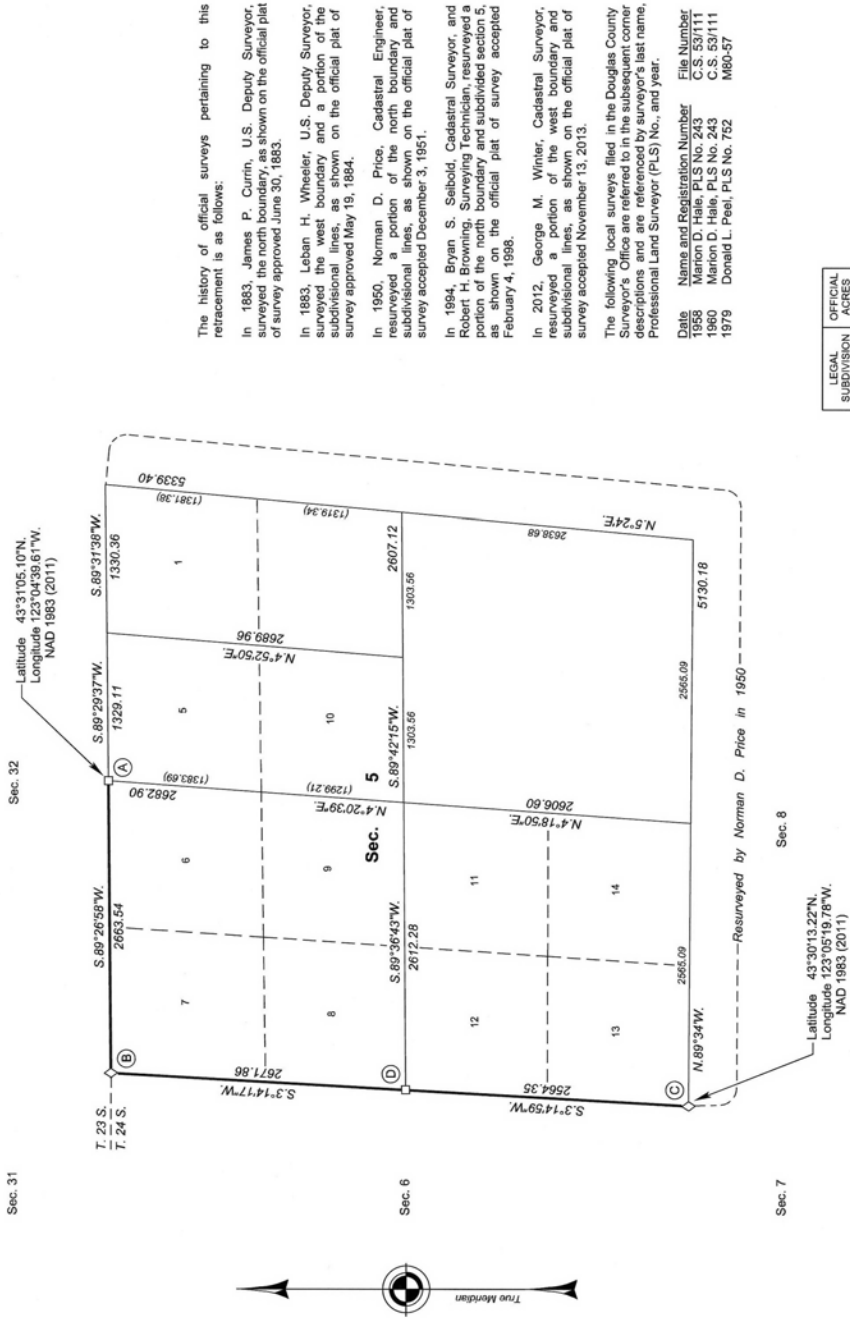
Portland, Oregon

The survey represented by this plat, having been correctly executed in accordance with the regulations of the Bureau, is hereby accepted.

For the Director  
Mary J.M. Hartz  
Chief Cadastral Surveyor of Oregon

December 18, 2015  
Date

TOWNSHIP 24 SOUTH, RANGE 3 WEST, OF THE WILLAMETTE MERIDIAN, OREGON  
RETRACEMENT



| LEGAL SUBDIVISION                                 | OFFICIAL ACRES |
|---|----------------|
| SECTION 5   |                |
| LOT 5   | 41.29          |
| LOT 6   | 41.82          |
| LOT 7   | 40.90          |
| LOT 8   | 39.52          |
| LOT 9   | 39.52          |
| LOT 10  | 39.65          |
| LOT 11  | 38.54          |
| LOT 12  | 38.20          |
| LOT 13  | 38.20          |
| LOT 14  | 38.24          |
| TOTAL AREA RECOVERED LAND RESURVEYED IN SECTION 5 | 396.04         |

NOTE: Unless otherwise noted, the lightweight lines with bearings and distances were surveyed by Bryan S. Seibold and Robert H. Browning in 1994, and were utilized to calculate the Federal interest land in section 5.

Richard J. Dieckmann  
Cadastral Surveyor  
December 15, 2015  
Date

