

**UNITED STATES  
DEPARTMENT OF THE INTERIOR  
BUREAU OF LAND MANAGEMENT**

FIELD NOTES

OF THE

DEPENDENT RESURVEY OF A PORTION OF THE SOUTH BOUNDARY,

**TOWNSHIP 22 SOUTH, RANGE 9 WEST,**

A PORTION OF THE EAST BOUNDARY,

**TOWNSHIP 23 SOUTH RANGE 10 WEST,**

A PORTION OF THE SUBDIVISIONAL LINES,

AND THE SUBDIVISION OF SECTION 4,

**TOWNSHIP 23 SOUTH, RANGE 9 WEST,**

OF THE WILLAMETTE MERIDIAN,

IN THE STATE OF OREGON

---

**EXECUTED BY**

***Joseph M. Mannix, Cadastral Surveyor***

***Edith M. Forkner, Cadastral Surveyor***

Under Special Instructions approved September 10, 2013,  
which provided for the surveys included under Group No. 2727,  
and Assignment Instructions dated September 10, 2013, and March 3, 2014.

***Survey commenced October 22, 2013***

***Survey completed April 21, 2014***

**T. 22 S., R. 9 W., Willamette Meridian, Oregon**

The following field notes are those of the dependent resurvey of a portion of the south boundary, Township 22 South, Range 9 West, a portion of the east boundary, Township 23 South, Range 10 West, a portion of the subdivisional lines, and the subdivision of section 4, Township 23 South, Range 9 West, Willamette Meridian, Oregon.

The history of the official surveys pertaining to this survey is as follows:

In 1878, William H. Byars, U.S. Deputy Surveyor, surveyed a portion of the south boundary of T. 22 S., R. 9 W., as shown on the official plat of survey approved July 31, 1878.

In 1878, William H. Byars, U.S. Deputy Surveyor, surveyed the east boundary of T. 23 S., R. 10 W., as shown on the official plat of survey approved July 26, 1879.

In 1878-79, William H. Byars, U.S. Deputy Surveyor, surveyed a portion of the subdivisional lines of T. 23 S., R 9 W., as shown on the official plat of survey approved July 26, 1879.

In 1898-99, Oscar F. Thiel, U.S. Deputy surveyor, retraced portions of the north and west boundaries and surveyed the remainder of the subdivisional lines of T. 23 S., R 9 W., as shown on the official plat of survey approved June 12, 1900.

In 1967, Donald R. Beck, Cadastral Surveyor, dependently resurveyed a portion of the east boundary and subdivisional lines of T. 23 S., R. 10 W., as shown on the official plat of survey accepted April 24, 1970.

In 1969-70, James E. Jelley and Rolla R. Steward, Cadastral Surveyors, dependently resurveyed a portion of the east boundary of T. 23 S., R. 10 W., and a portion of the subdivisional lines of T. 23 S., R. 9 W., as shown on the official plat of survey accepted November 16, 1972.

In 1980-82, Harvey E. Wofford and Stephen J. Malloy, Cadastral Surveyors, dependently resurveyed portions of the north and east boundaries and subdivisional lines, and subdivided sections 2 and 13 of T. 23 S., R 9 W., as shown on the official plat of survey accepted April 14, 1983.

The following local surveys filed in the Douglas County Surveyor's Office are referred to in subsequent corner descriptions and are referenced by surveyor's last name, official title, Professional Land Surveyor (PLS) No. or Professional Engineer (PE) No., and year.

<u>Date</u>	<u>Name and Registration Number</u>	<u>File Number</u>
1952	A. R. Evans, PE No. 2741	CS 41/9
January 1967	Douglas County Surveyor's Office	CS 54/12
December 1967	Douglas County Surveyor's Office	CS 54/60
1967	Arnold G. Gibson, PLS 359	CS 55/68
1968	Douglas County Surveyor's Office	CS 54/60
1968	William C. Stiles, PLS No. 432	CS 55/89A-C, M36-42
1969	Douglas County Surveyor's Office	CS 54/60
1973	Douglas County Surveyor's Office	CS 56/39
1974	Douglas County Surveyor's Office	CS 56/43
1980	Ronald E. Stuntzner, PLS No. 1342	M85-31
1982	W. Carey Weatherly, PLS No. 1667	CS 58/276-1

## T. 22 S., R. 9 W., Willamette Meridian, Oregon

<u>Date</u>	<u>Name and Registration Number</u>	<u>File Number</u>
1984	Richard J. Hintz, PLS No. 497	M97-6
1986	W. Carey Weatherly, PLS No 1667	CS 63/55-4
1987	Douglas County Surveyor's Office	CS 62/45
1999	Randall W. Smith, PLS No. 2469	CS 66/12-1&2

The 1984 survey by Richard J. Hintz, PLS No. 497, established numerous iron rod monuments, 1/2 inch diameter, projecting 3 feet above ground, as indicated on Hintz's plat. These iron rods were not used for control during this resurvey.

In 1974, the Federal Highway Administration (FHWA) surveyed a portion of the north boundary, a portion of the subdivisional lines, and subdivided section 4 of T. 23 S., R. 9 W., for the Bureau of Land Management (BLM). Steel fence posts were set for certain corner monuments and bearing trees were marked to reference the corners. The survey was done administratively and not under an official government survey. The record of the survey is located in the Coos Bay District Office.

In 1977, the BLM surveyed the line bet. secs. 10 and 11, perpetuating the 1/4 section corner of sections 10 and 11. The survey was done administratively and not under an official government survey. The record of the survey is located in the Coos Bay District Office.

The survey was executed in accordance with the specification set forth in the Manual of Surveying Instructions (2009), and the special instructions dated September 10, 2013, for Group No. 2727, Oregon.

The directions of the lines are based on the true meridian as determined by direct solar observation and Global Positioning System (GPS) techniques. All measurements along the lines were derived through GPS and conventional survey techniques. An analysis of the unadjusted field data assured a closure not exceeding 1:4000 in error. Measured distances and directions have been adjusted by computer software that incorporates a least squares adjustment routine. The adjusted bearings and distances are reported to the nearest second and 0.01 foot.

Preliminary to the resurvey the lines of the official original surveys and resurveys were retraced and search was made for all corners, lines, other calls of the record, and, where available, collateral evidence of local surveys and corners. Identified corners were perpetuated in their original positions; lost corners were reestablished and monumented at proportionate positions based on the official record. The retracement data were thoroughly verified and only the corner description field notes are given herein.

Each new bearing tree has a 2 1/2 inch x 1/4 inch magnetic nail (Mag Nail) driven at the base on right side center, unless otherwise noted in the corner description.

Each new corner established or remonumented has a magnet deposited in a white plastic case at the base of the stainless steel post, unless otherwise noted in the corner description.

An aluminum angle iron, 5 ft. long, was driven alongside all corners unless an existing guard post was otherwise noted in the corner description. Only those lines bounding Federal interest land were blazed.

**T. 22 S., R. 9 W., Willamette Meridian, Oregon**

The geographic position in NAD 1983 (2011) of the following corners as determined by ties from temporary GPS control points, established utilizing dual frequency, carrier phase GPS receivers, and processed using the National Geodetic Survey's Online Positioning User Service (OPUS):

The corner of sections 3, 4, 33, and 34, on the north boundary of the township:

Latitude: 43° 36' 32.15" N. Longitude: 123° 46' 00.12" W.

The corner of sections 7, 12, 13, and 18, on the west boundary of the township:

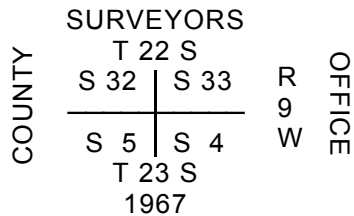
Latitude: 43° 34' 23.30" N. Longitude: 123° 49' 03.01" W.

The corner of sections 11, 12, 13, and 14:

Latitude: 43° 34' 48.51" N. Longitude: 123° 43' 38.73" W.

**Dependent Resurvey of a Portion of the South Boundary,  
T. 22 S., R. 9 W., Willamette Meridian, Oregon**

The cor. of secs. 4, 5, 32, and 33, perpetuated by the Douglas County Surveyor's Office, in December, 1967; monumented with an iron post, 1 1/2 ins. diam., firmly set, projecting 5 ins. above ground, with a brass cap mkd.



from which the remains of an original bearing tree

A decayed fir snag, 23 ins. diam., bears N. 65° W., 9.2 ft. dist., no marks visible.

and the remains of the bearing trees mkd. by the Douglas County Surveyor's Office

A fir high stump, 13 ins. diam., bears N. 15 1/2° E., 9.0 ft. dist., with a healed double blaze.

A decayed and partially uprooted fir stump, size indeterminate, bears S. 72° E., 6.0 ft. dist., with remains of a healed blaze.

A decayed fir high stump, 15 ins. diam., bears S. 14 3/4° W., 13.9 ft. dist., with a healed double blaze.

A decayed fir high stump, 21 ins. diam., bears N. 53 3/4° W., 11.4 ft. dist., with a healed double blaze.

23211

**Dependent Resurvey of a Portion of the South Boundary,  
T. 22 S., R. 9 W., Willamette Meridian, Oregon**

and new bearing trees

A fir, 9 ins. diam., bears N. 37 1/2° E., 7.5 ft. dist., mkd. T22S R9W S33 BT.

A fir, 6 ins. diam., bears S. 10 3/4° E., 18.4 ft. dist., mkd. X BT.

A fir, 10 ins. diam., bears S. 78 3/4° W., 9.2 ft. dist., mkd. T23S R9W S5 BT.

A fir, 8 ins. diam., bears N. 23 3/4° W., 6.7 ft. dist., mkd. T22S R9W S32 BT.

Point for the 1/4 sec. cor. of secs. 4 and 33, at proportionate dist.; there is no remaining evidence of the original cor.

Set a stainless steel post, 28 ins. long, 2 1/2 ins. diam., 20 ins. in the ground, in a mound of stone, 2 1/2 ft. base, to top, with a brass cap mkd.

T 22 S R 9 W  
S 33  
1/4 ———  
S 4  
T 23 S  
2014

from which

A fir, 16 ins. diam., bears N. 12 1/2° E., 21.6 ft. dist., mkd. 1/4 S33 BT.

A fir, 10 ins. diam., bears S. 36 1/2° W., 38.9 ft. dist., mkd. 1/4 S4 BT.

Corner is located on the east edge of a creek, dry, 2 ft. wide, course N. 60° W.

The cor. of secs. 3, 4, 33, and 34, perpetuated by the Douglas County Surveyor's Office in December, 1967, further perpetuated by Weatherly, PLS No. 1667, in 1982; monumented with an iron post, 1 1/4 ins. diam., firmly set, projecting 6 ins. above the top of a mound of stone, 3 ft. base, 1 1/2 ft. high, with a brass cap mkd.

COUNTY SURVEYORS OFFICE  
T 22 S R 9 W  
S 33 | S 34  
S 4 | S 3  
T 23 S  
1967

from which the remains of the original bearing trees

A decayed fir stump, 33 ins. diam., bears N. 35 1/4° E., 23.7 ft. dist., no marks visible.  
(Record, N. 50° E.)

**Dependent Resurvey of a Portion of the South Boundary,  
T. 22 S., R. 9 W., Willamette Meridian, Oregon**

- A fir stump with an aluminum cap, 46 ins. diam., bears S.  $27\ 1/4^\circ$  W., 57.0 ft. dist., no marks visible. (Record, S.  $30^\circ$  W., 59.4 ft. dist.)

and the remains of the bearing trees mkd. by the Douglas County Surveyor's Office

- A burnt hemlock stump with an aluminum cap, size indeterminate, bears S.  $30\ 1/4^\circ$  E., 77.2 ft. dist., no marks visible.
- A burnt hemlock stump with an aluminum cap, 17 ins. diam., bears S.  $13\ 3/4^\circ$  W., 78.2 ft. dist., no marks visible.
- A decayed hemlock stump, size indeterminate, bears N.  $1^\circ$  W., 34.3 ft. dist., with scribe marks 22S R9W S33 CS BT visible on open blaze.

and new bearing trees

- A fir, 11 ins. diam., bears N.  $27^\circ$  E., 22.2 ft. dist., mkd. T22S R9W S34 BT.
- A fir, 11 ins. diam., bears S.  $42\ 1/2^\circ$  E., 50.1 ft. dist., mkd. T23S R9W S3 BT.
- A fir, 12 ins. diam., bears S.  $36\ 1/4^\circ$  W., 11.0 ft. dist., mkd. T23S R9W S4 BT.
- A fir, 13 ins. diam., bears N.  $35^\circ$  W., 28.5 ft. dist., mkd. T22S R9W S33 BT.

---

The W  $1/16$  sec. cor. of secs. 3 and 34, established by Hintz, PLS No. 497, in 1984, and is accepted as the cor.; monumented with an iron post, 1  $1/2$  ins. diam., firmly set, projecting 3 ins. above ground, with a brass cap mkd.

PLS 497  
S 34  
W  $1/16$  ———  
S 3  
1984

from which the remains of the bearing trees mkd. by Hintz

- A fir, 17 ins. diam., bears S.  $87^\circ$  W., 36.1 ft. dist., with a healed blaze and a spike at the base on the left side center.
- A fir stump, 5 ft. high, 21 ins. diam., bears N.  $59^\circ$  W., 46.3 ft. dist., with a healed blaze and a spike at the base on the left side center.

and a new bearing tree

- A maple, 11 ins. diam., bears N.  $21\ 3/4^\circ$  E., 7.8 ft. dist., mkd. W1/16 S34 BT on the bark.

From the corner

- N.  $89^\circ\ 48'\ 21''$  E., 35 ft. dist., creek, 5 ft. wide, course N.  $65^\circ$  E.
-

23213

**Dependent Resurvey of a Portion of the South Boundary,  
T. 22 S., R. 9 W., Willamette Meridian, Oregon**

The 1/4 sec. cor. of secs. 3 and 34, reestablished by proportionate measurement by Hintz, PLS No. 497, in 1984. There is no remaining evidence of the original corner and this point is accepted as a careful and faithful reestablishment of the cor.; monumented with a brass tablet set flush with the top of a sandstone, 24 ins. x 16 ins x 6 ins., mkd.

PLS 497  
T 22 S R 9 W  
S 34  
1/4 ———  
S 3  
T 23 S  
1984

from which the bearing trees mkd. by Hintz

A fir, 27 ins. diam., bears S. 76 1/4° W., 26.9 ft. dist., with a healed blaze.

A hemlock, 19 ins. diam., bears N. 10 3/4° W., 6.7 ft. dist., with a healed blaze.

Alongside the cor. is an orange carsonite post.

The cor. of secs. 2, 3, 34, and 35, perpetuated by the Douglas County Surveyor's Office in December, 1967; monumented with an iron post, 1 1/2 ins. diam., firmly set, projecting 14 ins. above ground, with a brass cap mkd.

SURVEYORS  
T 22 S  
S 34 | S 35 R 9 W  
S 3 | S 2 OFFICE  
T 23 S  
1967  
COUNTY

from which the remains of the original bearing trees

A fir stump, 74 ins. diam., bears N. 60° E., 46.9 ft. dist., no marks visible.

A decayed fir stump, 28 ins. diam., bears S. 50° W., 29.7 ft. dist., no marks visible.

and the remains of the bearing trees mkd. by the Douglas County Surveyor's Office

A fir, 25 ins. diam., bears N. 49° E., 30.4 ft. dist., with a healed blaze.

A fir stump, 6 ft. high, 31 ins. diam., bears S. 40° E., 39.6 ft. dist., with a healed blaze.

A decayed hemlock stump, 25 ins. diam., bears S. 79° W., 43.6 ft. dist., no marks visible.

and new bearing trees

A fir, 16 ins. diam., bears S. 22° E., 51.8 ft. dist., mkd. T23S R9W S2 BT.

**Dependent Resurvey of a Portion of the South Boundary,  
T. 22 S., R. 9 W., Willamette Meridian, Oregon**

A fir, 11 ins. diam., bears S.  $17\ 1/2^\circ$  W., 33.6 ft. dist., mkd. T23S R9W S3 BT.

A fir, 14 ins. diam., bears N.  $37\ 3/4^\circ$  W., 32.3 ft. dist., mkd. T22S R9W S34 BT.

Alongside the cor. is an iron post, 36 ins. long,  $1\ 1/2$  ins. diam., disturbed, with an unmarked iron cap. Bury iron post alongside the cor.

**Dependent Resurvey of a Portion of the East Boundary,  
T. 23 S., R. 10 W., Willamette Meridian, Oregon**

The cor. of secs. 7, 12, 13, and 18; monumented with an iron post,  $2\ 1/2$  ins. diam., firmly set, projecting 4 ins. above ground, with a brass cap mkd.

	T 23 S	
R 10 W		R 9 W
S 12		S 7
-----		
S 13		S 18
1967		

from which the remains of the original bearing trees

A decayed fir stump, 48 ins. diam., bears N.  $15^\circ$  E., 27.7 ft. dist., no marks visible.

A fir stump, 36 ins. diam., bears S.  $33^\circ$  W., 37.0 ft. dist., no marks visible.

and the bearing trees mkd. by Beck in 1967

A hemlock, 23 ins. diam., bears N.  $15^\circ$  E., 35.0 ft. dist., with a healed blaze.

A hemlock, 23 ins. diam., bears S.  $9^\circ$  E., 18.5 ft. dist., with a healed blaze.

A hemlock, 14 ins. diam., bears S.  $42^\circ$  W., 27.4 ft. dist., with a healed blaze.

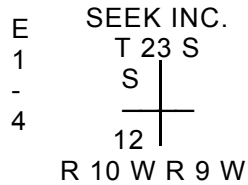
A hemlock, 17 ins. diam., bears N.  $11^\circ$  W., 29.7 ft. dist., with a healed blaze.

From the corner

N.  $1^\circ\ 33'\ 40''$  W., 135 ft. dist., dirt road, 10 ft. wide, bears East and West.

The  $1/4$  sec. cor. of sec. 12 only, reestablished by proportionate measurement by Stiles, PLS No. 432, in 1968. There is no remaining evidence of the original cor. and this position is accepted as a careful and faithful reestablishment of the cor.; monumented with an iron post, 1 in. diam., firmly set, projecting 12 ins. above ground, with a brass cap mkd.

Dependent Resurvey of a Portion of the East Boundary,  
T. 23 S., R. 10 W., Willamette Meridian, Oregon



from which the remains of the bearing trees mkd. by Stiles

A fir, 39 ins. diam., bears S. 80° W., 21.0 ft. dist., with a healed blaze at waist height.

A fir stump, 37 ins. diam., bears N. 19 1/4° W., 28.9 ft. dist., with a healed blaze at waist height.

and a new bearing tree

A hemlock, 18 ins. diam., bears N. 7 1/2° W., 48.4 ft. dist., mkd. 1/4 S12 BT.

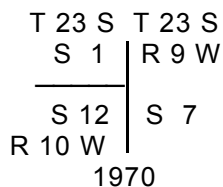
From this cor., S. 1° 33' 40" E., 295.44 ft. dist., to a point on the line bet. secs. 7 and 12; from this point, a point established, by person(s) unknown bears E., 3.58 ft. dist., and is not utilized in this survey; monumented with an iron rod, 30 ins. long, 5/8 in. diam., lying loosely on a collar of stone.

Also from this same corner, S. 1° 33' 40" E., at:

190 ft. dist., top of rock face, slopes S.

375 ft. dist., bottom of rock face.

The cor. of secs. 1 and 12; monumented with an iron post, 2 1/2 ins. diam., firmly set, with top flush with the surface of the ground, with a brass cap mkd.



from which the remains of bearing trees mkd. by Evans, PE No. 2741, in 1952

A fir high stump, 28 ins. diam., bears S. 72° W., 21.1 ft. dist., with a healed double blaze.

A fir, 28 ins. diam., bears N. 12 3/4° W., 28.4 ft. dist., with a healed blaze at breast height.

and a new bearing tree

A fir, 4 ins. diam., bears S. 62 1/2° W., 30.0 ft. dist., mkd. X BT.

**Dependent Resurvey of a Portion of the East Boundary,  
T. 23 S., R. 10 W., Willamette Meridian, Oregon**

Corner is located on the NE. cor. of fir reproduction, edge bears S. and W.

From the corner

S. 1° 34' 12" E., 50 ft. dist., spur, slopes West.

**Dependent Resurvey of a Portion of the Subdivisional Lines,  
T. 23 S., R. 9 W., Willamette Meridian, Oregon**

The cor. of secs. 11, 12, 13, and 14; monumented with an iron post, 2 1/2 ins. diam., firmly set, projecting 6 ins. above ground, with a brass cap mkd.

T 23 S	R 9 W
S 11	S 12
S 14	S 13
1969	

from which the remains of the original bearing trees

- A maple, 53 ins. diam., bears S. 77° E., 39.6 ft. dist., no marks visible.
- A decayed fir stump, 32 ins. diam., bears S. 54° W., 21.2 ft. dist., no marks visible. (Record, 17.8 ft. dist.)
- A decayed fir stump, 65 ins. diam., bears N. 19° W., 19.8 ft. dist., no marks visible.

and the remains of the bearing trees mkd. by Jelley and Steward in 1969-70

- A hemlock, 41 ins. diam., bears N. 34° E., 66.7 ft. dist., with a healed blaze.
- A maple, 33 ins. diam., bears S. 89° W., 33.7 ft. dist., no marks visible.
- A hemlock stump, 9 ft. high, 16 ins. diam., bears N. 44° W., 62.7 ft. dist., with a healed blaze.

and a new bearing tree

- A fir, 7 ins. diam., bears N. 69 1/2° W., 80.1 ft. dist., mkd. X BT.

Alongside the cor. is a steel fence post.

Point for the 1/4 sec. cor. of secs. 11 and 14, at proportionate dist.; there is no remaining evidence of the original cor.

Set a stainless steel post, 28 ins. long, 2 1/2 ins. diam., 23 ins. in the ground, with brass cap mkd.

23217

Dependent Resurvey of a Portion of the Subdivisional Lines,  
T. 23 S., R. 9 W., Willamette Meridian, Oregon

T 23 S R 9 W  
S 11  
1/4 ———  
S 14  
2013

from which new bearing trees

A fir, 15 ins. diam., bears S. 53° W., 24.4 ft. dist., mkd. 1/4 S14 BT.

A fir, 12 ins. diam., bears N. 11 1/4° W., 30.3 ft. dist., mkd. 1/4 S11 BT.

---

The cor. of secs. 10, 11, 14, and 15, perpetuated by the Douglas County Surveyor's Office, in January, 1967; monumented with an iron post, 1 1/4 ins. diam., firmly set, projecting 12 ins. above ground, with a brass cap mkd.

	SURVEYORS			
	T 23 S			
COUNTY	S 10		S 11	OFFICE
	S 15		S 14	
	R 9 W			
	1967			

from which the remains of the original bearing trees

A very decayed hemlock stump, size indeterminate, bears S. 43° E., 38.3 ft. dist., no marks visible.

A decayed hemlock stump, size indeterminate, bears S. 51° W., 20.5 ft. dist., no marks visible.

and the remains of the bearing trees mkd. by the Douglas County Surveyor's Office

A decayed hemlock stump, 19 ins. diam., bears N. 50 1/2° E., 35.4 ft. dist., no marks visible.

A decayed hemlock stump, 6 ins. diam., bears S. 66° E., 13.5 ft. dist., no marks visible.

and new bearing trees

A fir, 14 ins. diam., bears N. 13° E., 14.9 ft. dist., mkd. T23S R9W S11 BT.

A fir, 11 ins. diam., bears S. 65 3/4° E., 11.6 ft. dist., mkd. T23S R9W S14 BT.

A fir, 10 ins. diam., bears S. 65 1/2° W., 17.7 ft. dist., mkd. T23S R9W S15 BT.

A fir, 12 ins. diam., bears N. 32 3/4° W., 20.9 ft. dist., mkd. T23S R9W S10 BT.

From the corner

**Dependent Resurvey of a Portion of the Subdivisional Lines,  
T. 23 S., R. 9 W., Willamette Meridian, Oregon**

S. 89° 10' 35" E., 130 ft. dist., Otter Creek, 10 ft. wide, course N. 50° E.

---

The 1/4 sec. cor. of secs. 10 and 11, perpetuated during an unofficial administrative survey by the BLM, in 1977; monumented with an iron rod, 5/8 in. diam., firmly set, with top flush with the surface of the ground, from which the remains of the original bearing trees

A decayed fir stump, 44 ins. diam., bears N. 15° E., 18.5 ft. dist., with axe marks.

A roothole bears N. 71° W., 13.2 ft. dist., alongside of which is a down decayed fir, 26 ins. diam., no marks visible.

and the remains of the bearing trees mkd. by the BLM

A decayed hemlock stump, 25 ins. diam., bears N. 39° E., 35.8 ft. dist., with a spike at the base facing the cor.

A decayed hemlock stump, 33 ins. diam., bears N. 38° W., 29.2 ft. dist., with a spike at the base facing the cor.

At the corner point

Set a stainless steel post, 28 ins. long, 2 1/2 ins. diam., 22 ins. in the ground, directly over iron rod, with a brass cap mkd.

T 23 S R 9 W  
1/4  
S 10 | S 11  
2013

from which new bearing trees

A fir, 10 ins. diam., bears N. 69 1/4° E., 6.6 ft. dist., mkd. 1/4 S11 BT.

A fir, 9 ins. diam., bears N. 51 3/4° W., 19.3 ft. dist., mkd. 1/4 S10 BT.

---

The cor. of secs. 2, 3, 10, and 11, perpetuated by the Douglas County Surveyor's Office, in 1969, further perpetuated by Weatherly, PLS No. 1667, in 1986, and again perpetuated by the Douglas County Surveyor's Office, in 1987, from original evidence no longer in existence; monumented with an iron post, 1 1/2 ins. diam., firmly set, projecting 4 ins. above ground, with a brass cap mkd.

T 23 S R 9 W  
S 3 | S 2  
-----  
S 10 | S 11  
LS 1667 1986

from which the remains of the bearing trees mkd. by Weatherly

**Dependent Resurvey of a Portion of the Subdivisional Lines,  
T. 23 S., R. 9 W., Willamette Meridian, Oregon**

A fir, 36 ins. diam., bears S. 78 1/2° W., 74.1 ft. dist., with a healed blaze and an X at breast height.

A fir stump, 54 ins. diam., bears S. 34° E., 46.4 ft. dist., to a boat spike added by the Douglas County Surveyor's Office in 1987 in the center of the stump.

and a bearing tree mkd. by the Douglas County Surveyor's Office in 1987

A hemlock, 16 ins. diam., bears N. 76 1/4° W., 78.5 ft. dist., with a healed blaze.

and new bearing trees

A fir, 15 ins. diam., bears N. 2 1/2° E., 24.0 ft. dist., mkd. T23S R9W S2 BT.

A fir, 19 ins. diam., bears S. 72° E., 11.6 ft. dist., mkd. T23S R9W S11 BT.

From the corner

S. 1° 52' 10" W., 40 ft. dist., graveled road, 8 ft. wide, bears N. 20° W. and S. 30° E.

---

The 1/4 sec. cor. of secs. 2 and 3, perpetuated by Smith, PLS No. 2469, in 1999; monumented with an iron post, 1 1/2 ins. diam., firmly set, projecting 12 ins. above ground, with a brass cap mkd.

T 23 S R 9 W  
1/4  
S 3 | S 2  
1980

from which the remains of the bearing trees mkd. by Stuntzner, PLS No. 1342, in 1980

A fir stump, 42 ins. diam., bears N. 34° E., 22.4 ft. dist., no marks visible.

A fir stump, 51 ins. diam., bears S. 74° E., 29.0 ft. dist., with illegible scribe marks visible on open blaze.

and the remains of a bearing tree mkd. by Wofford and Malloy in 1980-82

A fir stump, 24 ins. diam., bears N. 57 1/2° W., 42.9 ft. dist., with scribe marks BT visible on open blaze.

and the bearing trees mkd. by Smith

A fir, 11 ins. diam., bears N. 37 3/4° E., 10.4 ft. dist., with a healed blaze.

A fir, 11 ins. diam., bears N. 86° E., 7.1 ft. dist., with a healed blaze.

A fir, 8 ins. diam., bears N. 88 3/4° W., 4.8 ft. dist., with a healed blaze.

---

23220

Dependent Resurvey of a Portion of the Subdivisional Lines,  
T. 23 S., R. 9 W., Willamette Meridian, Oregon

The 1/4 sec. cor. of secs. 4 and 9, perpetuated by the Douglas County Surveyor's Office, in 1974; monumented with an iron post, 1 1/2 ins. diam., firmly set, projecting 5 ins. above ground, with a brass cap mkd.

SURVEYORS  
T 23 S  
S 4  
1/4 ———  
S 9  
R 9 W  
1974

COUNTY                      OFFICE

from which the remains of the original bearing trees

- A decayed fir snag, 15 ins. diam., bears N. 12° E., 4.6 ft. dist., with illegible scribe marks visible on open blaze (Record, North).
- A roothole bears S. 28° E., 3.3 ft. dist., with decayed fir remains.

and the remains of the bearing trees mkd. by the Douglas County Surveyor's Office

- A roothole bears N. 40° E., 70.4 ft. dist., alongside of which is a down fir, 23 ins. diam., with a healed blaze.
- A fir, 37 ins. diam., bears S. 39 3/4° E., 45.4 ft. dist., with a healed blaze.

and a new bearing tree

- A fir, 32 ins. diam., bears N. 43 1/4° E., 97.2 ft. dist., mkd. 1/4 S4 BT.

---

Point for the W 1/16 sec. cor. of secs. 4 and 9.

Set a stainless steel post, 28 ins. long, 2 1/2 ins. diam., 25 ins. in the ground, with a brass cap mkd.

S 4  
W 1/16 ———  
S 9  
2014

from which new bearing trees

- A fir, 20 ins. diam., bears N. 8 3/4° E., 18.1 ft. dist., mkd. W1/16 S4 BT.
- A white fir, 15 ins. diam., bears S. 60 1/2° W., 25.2 ft. dist., mkd. W1/16 S9 BT.

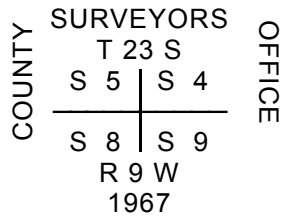
From the corner

- E., 10 ft. dist., creek branch, 1/2 ft. wide, course N. 60° E.

**Dependent Resurvey of a Portion of the Subdivisional Lines,  
T. 23 S., R. 9 W., Willamette Meridian, Oregon**

W., 25 ft. dist., creek branch, 1 ft. wide, course N. 20° W.

The cor. of secs. 4, 5, 8, and 9, perpetuated by the Douglas County Surveyor's Office, in 1968; monumented with an iron post, 1 1/2 ins. diam., firmly set, projecting 11 ins. above ground, with a brass cap mkd.



from which the remains of an original bearing tree

A fir stump, 55 ins. diam., bears N. 35° E., 21.1 ft. dist., with no marks visible.

and a bearing tree mkd. by the Douglas County Surveyor's Office

A hemlock, 30 ins. diam., bears N. 78 1/2° E., 9.5 ft. dist., with a healed blaze.

and new bearing trees

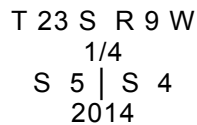
A hemlock, 19 ins. diam., bears S. 69° E., 34.4 ft. dist., mkd. T23S R9W S9 BT.

A pistol-butt hemlock, 23 ins. diam., bears S. 54 1/2° W., 17.9 ft. dist., mkd. T23S R9W S8 BT.

A hemlock, 25 ins. diam., bears N. 82° W., 40.7 ft. dist., mkd. T23S R9W S5 BT.

Point for the 1/4 sec. cor. of secs. 4 and 5, at proportionate dist.; there is no remaining evidence of the original cor.

Set a stainless steel post, 28 ins. long, 2 1/2 ins. diam., 28 ins. in the ground, with brass cap mkd.



from which new bearing trees

A white fir, 9 ins. diam., bears N. 77 1/2° E., 58.5 ft. dist., mkd. 1/4 S4 BT.

A maple, 18 ins. diam., bears S. 51 1/2° W., 18.7 ft. dist., mkd. 1/4 S5 BT on bark.

23222

Dependent Resurvey of a Portion of the Subdivisional Lines,  
T. 23 S., R. 9 W., Willamette Meridian, Oregon

Point for the 1/4 sec. cor. of sec. 5 only, on the N. bdy. of sec. 8, at proportionate dist.; there is no remaining evidence of the original cor.

Set a stainless steel post, 28 ins. long, 2 1/2 ins. diam., 23 ins. in the ground, with brass cap mkd.

T 23 S R 9 W  
1/4 S 5  
-----  
2014

from which new bearing trees

A white fir, 20 ins. diam., bears N. 74 1/2° E., 35.5 ft. dist., mkd. X BT.

A white fir, 12 ins. diam., bears N. 73 1/2° W., 60.2 ft. dist., mkd. 1/4 S5 BT.

Point for the closing cor. of secs. 7 and 8, on the S. bdy. of sec. 5, at proportionate dist.; there is no remaining evidence of the original cor.

Set a stainless steel post, 28 ins. long, 2 1/2 ins. diam., 24 ins. in the ground, with brass cap mkd.

T 23 S R 9 W  
S | 5  
-----  
S 7 | S 8  
C C  
2014

from which new bearing trees

A fir, 43 ins. diam., bears S. 38 1/2° E., 23.6 ft. dist., mkd. T23S R9W S8 CC BT.

A fir, 13 ins. diam., bears S. 63° W., 41.1 ft. dist., mkd. T23S R9W S7 CC BT.

The cor. of secs. 5 and 6 only, on the N. bdy. of sec. 7; monumented with an iron post, 1 1/2 ins. diam., firmly set, projecting 3 ins. above ground, in a collar of stone, with a brass cap mkd.

OREGON STATE      BOARD OF      FORESTRY  
T 23 S R 9 W  
S 6 | S 5  
-----  
S | 7  
1967  
RS 359

from which the remains of the original bearing trees

23223

**Dependent Resurvey of a Portion of the Subdivisional Lines,  
T. 23 S., R. 9 W., Willamette Meridian, Oregon**

A fir, 81 ins. diam., bears S. 80° W., 91.1 ft. dist., with a healed blaze.

A very decayed hemlock stump, size indeterminate., bears N. 78° W., 57.4 ft. dist., with no marks visible.

and a bearing tree mkd. by person(s) unknown

A hemlock, 37 ins. diam., bears S. 75° W., 34.0 ft. dist., with no marks visible on a partially healed blaze facing away from the cor.

and the bearing trees mkd. by Gibson, PLS No. 359, in 1967 (Record, County Surveyor)

A decayed hemlock stump, 24 ins. diam., bears N. 65° E., 42.6 ft. dist., with scribe marks T23 and other illegible scribe marks visible on decayed open blaze.

A hemlock, 35 ins. diam., bears N. 55° W., 46.9 ft. dist., with a healed blaze.

and a new bearing tree

A hemlock, 18 ins. diam., bears N. 2 1/2° E., 22.6 ft. dist., mkd. T23S R9W S5 BT.

From the corner

S. 89° 33' 23" E., 305 ft. dist., creek, 1 ft. wide, course N. 45° W.

---

**Subdivision of Section 4,  
T. 23 S., R. 9 W., Willamette Meridian, Oregon**

---

Point for the center 1/4 sec. cor. of sec. 4.

Set a stainless steel post, 28 ins. long, 2 1/2 ins. diam., 27 ins. in the ground, with brass cap mkd.

T 23 S R 9 W  
C 1/4 S 4  
2014

from which

A fir, 20 ins. diam., bears S. 86 1/2° E., 11.7 ft. dist., mkd. C1/4 S4 BT.

A hemlock, 28 ins. diam., bears S. 69 1/2° W., 19.2 ft. dist., mkd. C1/4 S4 BT.

From this cor., a point established as the center 1/4 sec. cor. of sec. 4 during an unofficial administrative survey by the FHWA, in 1974, bears S. 19° 16' 41" W., 13.20 ft. dist. This position was established without proper authority and is not utilized in this survey; monumented with a steel fence post, firmly set, projecting 2 1/2 ft. above ground, from which the remains of the bearing trees mkd. by FHWA

23224

Subdivision of Section 4,  
T. 23 S., R. 9 W., Willamette Meridian, Oregon

- A decayed fir stump, size indeterminate, bears S. 81 1/2° E., 31.3 ft. dist., no marks visible.
- A decayed hemlock high stump, size indeterminate, bears N. 26 1/4° W., 53.7 ft. dist., with remains of a healed blaze.

The 1/4 sec. cor. of secs. 3 and 4, perpetuated by the Douglas County Surveyor's Office, in 1973; monumented with an iron post, 1 1/4 ins. diam., firmly set, projecting 13 ins. above ground, with a brass cap mkd.

COUNTY	SURVEYORS	OFFICE
	T 23 S R 9 W	
	1/4	
	S 4   S 3	
	1973	

from which the remains of the original bearing trees

- A fir snag, 48 ins. diam., bears S. 35° E., 30.4 ft. dist., no marks visible.
- A fir, 84 ins. diam., bears S. 33° W., 8.6 ft. dist., with a healed blaze.

and a bearing tree mkd. by the Douglas County Surveyor's Office

- A hemlock, 18 ins. diam., bears S. 54° E., 8.2 ft. dist., with a healed blaze.

Point for the center W 1/16 sec. cor. of sec. 4.

Set a stainless steel post, 28 ins. long, 2 1/2 ins. diam., 25 ins. in the ground, with brass cap mkd.

W 1/16
C ————— C
S 4
2014

from which

- A fir, 9 ins. diam., bears N. 67 1/2° E., 40.2 ft. dist., mkd. CW1/16 S4 BT.
- A fir, 23 ins. diam., bears S. 49 1/2° E., 25.0 ft. dist., mkd. CW1/16 S4 BT.

From this cor., a point established as the center W 1/16 sec. cor. of sec. 4 during an unofficial administrative survey by the FHWA, in 1974, bears S. 33° 26' 11" W., 7.19 ft. dist. This position was established without proper authority and is not utilized in this survey; monumented with a steel fence post, firmly set, projecting 2 1/2 ft. above ground, from which the remains of the bearing trees mkd. by the FHWA

- A fir high stump, 29 ins. diam., bears N. 22° E., 17.8 ft. dist., with a healed blaze at waist height.

23225

**Subdivision of Section 4,  
T. 23 S., R. 9 W., Willamette Meridian, Oregon**

A fir high stump, 22 ins. diam., bears S. 88° W., 9.1 ft. dist., with a healed blaze at waist height.

---